

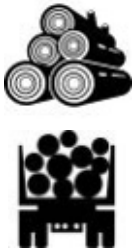
Timber Product Output and Use Mississippi, 2020

Mississippi forests accounted for a total of 947,231 thousand cubic feet (MCF) of timber products while the forest products industry produced a total of 713,211 MCF within the State.

This resource update contains the findings of a survey conducted on a sample of all primary wood-using mills in Mississippi. It complements the Forest Inventory and Analysis (FIA) annual inventory of volume and removals. The survey was conducted to determine the amount and source of wood receipts and annual timber product imports/exports. Only primary wood-using mills were surveyed. Primary mills are those that process roundwood in log or bolt form or as chipped roundwood. Examples of industrial roundwood products are saw logs, pulpwood, veneer logs, poles, and logs used for composite board products. Mills producing products from residues generated at primary and secondary processors were not surveyed. Data used in this update were accessed from the FIA Timber Product Output database (see back page).



- Biomass/energy plant
- ✕ Composite Panel/Eng. Wood Product mill
- △ Misc - Concentration/export yard
- ◁ Miscellaneous mill
- Pole mill
- * Pulp/Paper mill
- ▽ Saw mill (includes coop/stave, handle)
- ▷ Veneer/plywood mill
- Hardwood
- Hardwood/Softwood
- Softwood

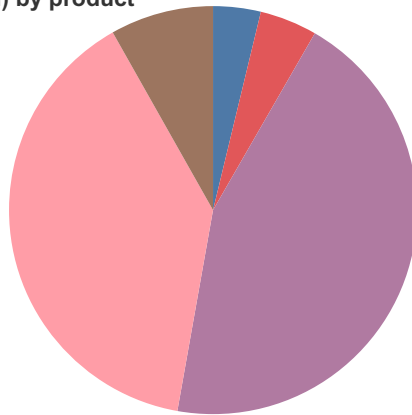


Mississippi had a total production of 947,231 MCF in 2020.

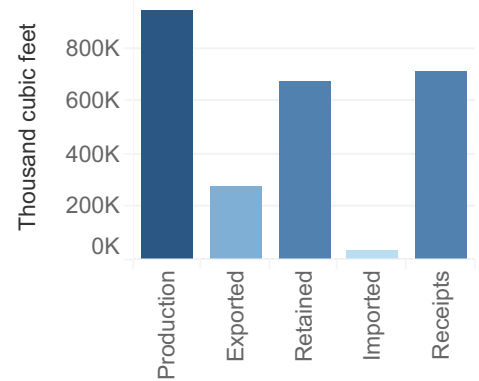
There are about 85 primary wood processing mills accounting for production in the State.

Statewide roundwood production (% of total) by product

Pulpwood	44.15%	89
Saw logs	39.05%	
Veneer logs	8.27%	48
Miscellaneous	4.76%	
Bioenergy/Fuelwood	3.78%	



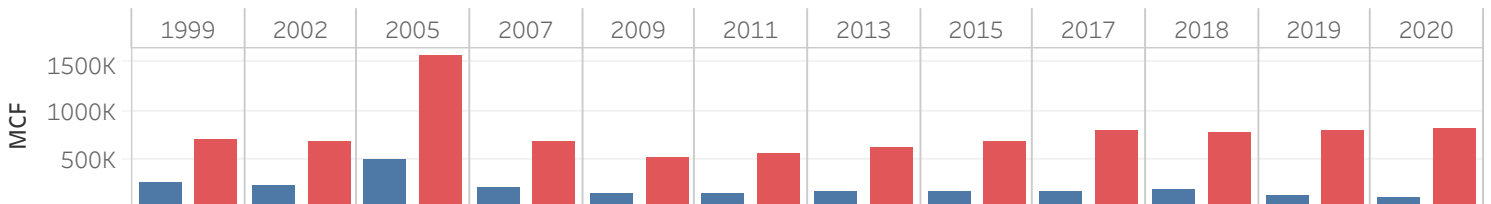
*Misc. includes all roundwood uses not listed



Mississippi imported 39,293 MCF into the State and exported 273,314 MCF out of the State making them a net exporter of roundwood.

Total roundwood production over time

■ Max. Hardwood .. ■ Max. Softwood P..





Timber Product Output and Use for Mississippi, 2020

How to cite this publication

USDA Forest Service. 2021. Timber Product Output and Use for Mississippi, 2020. Resource Update FS-352. Asheville, NC: U.S. Department of Agriculture, Forest Service, 2 p. <https://doi.org/10.2737/FS-RU-352>

Archived Versions

This report can be found on the USDA Forest Service publication database (Treesearch at: <https://www.fs.usda.gov/treesearch>). Archived versions of resource updates can be found by searching Treesearch using keywords "Forest Inventory," "Timber products," and "Mississippi"

Timber Product Output

The National Timber Product Output (TPO) section of the FIA program collects and reports estimates of industrial and nonindustrial uses of roundwood. Details of the TPO section and TPO data can be found here: <https://www.fia.fs.fed.us/program-features/tpo/>

Mississippi

Additional Resources

The application that produced this resource update was developed using data from the USDA Forest Service Forest Inventory and Analysis TPO database: <https://public.tableau.com/views/TPOREPORTINGTOOL/MakeSelection?:showVizHome=no>

Tables for Mississippi, 2020 can be found here: <https://https://doi.org/10.2737/FS-RU-352-Tables>

The FIA TPO one-click application can be found here: <https://public.tableau.com/views/FIATPOOneClickFactsheet/StateSelection?:showVizHome=no>

Detailed information about the FIA program can be found HERE: Bechtold, W.A.; Patterson, P.L., eds. 2005. The enhanced Forest Inventory and Analysis program—national sampling design and estimation procedures. Gen. Tech. Rep. SRS-80. Asheville, NC: U.S. Department of Agriculture Forest Service, Southern Research Station. 85 p. <https://doi.org/10.2737/SRS-GTR-80> .

Detailed information about the annual sample design can be found HERE: Coulston, John W.; Westfall, James A.; Wear, David N.; Edgar, Christopher B.; Prisley, Steven P.; Treiman, Thomas B.; Abt, Robert C.; Smith, W. Brad. 2018. Annual monitoring of US timber production: rationale and design. Forest Science. 64(5): 533-543 . <https://doi.org/10.1093/forsci/fxy010>

Note: Some of the above links will not be active until the resource update has been approved for official publication.