

United States
Department of
Agriculture

Forest Service

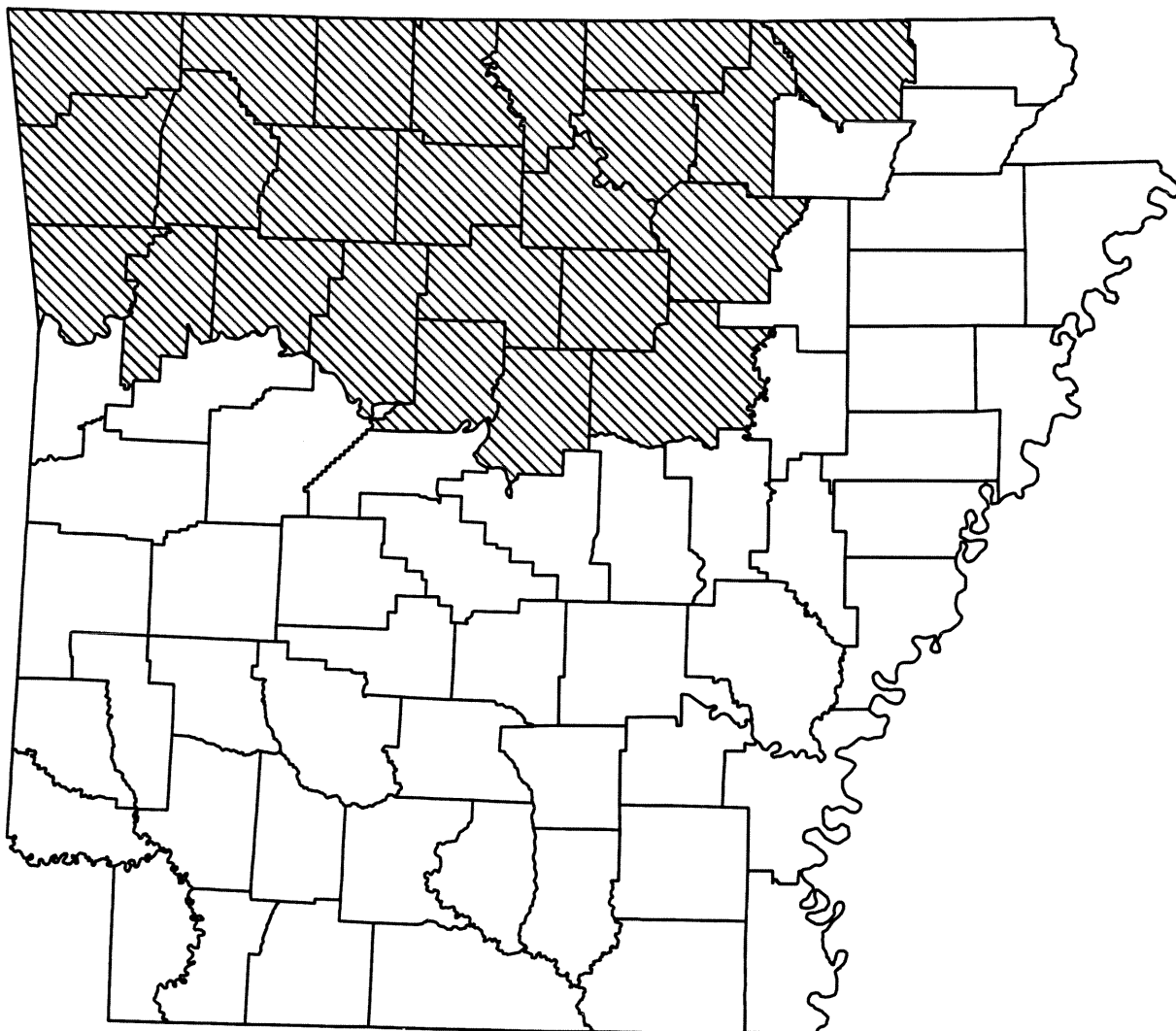


Forest Statistics for Arkansas' Ozark Counties—1995

**Southern
Research Station**

James F. Rosson, Jr., and Jack D. London

Resource Bulletin
SRS-15



FOREWORD

Periodic surveys of forest resources are authorized by the Forest Service and Rangeland Renewable Resources Research Act of 1978. These surveys are a continuing, nationwide undertaking by the Regional Experiment Stations of the USDA Forest Service. In the Southern United States, these surveys are conducted by the two Forest Inventory and Analysis (FIA) Research Work Units at the Southern Research Station, Asheville, North Carolina. The two FIA units, one located in Starkville, Mississippi and the other in Asheville, North Carolina, are responsible for inventories of 13 Southern States and the Commonwealth of Puerto Rico. The primary objective of the surveys is to periodically inventory and evaluate all forests and their related resources. These multiresource data help provide a basis for formulating forest policies and programs and for the orderly development and use of the resources. This report deals only with the extent and condition of forest land, associated timber volumes, and rates of timber growth, mortality, and removals.

ACKNOWLEDGMENTS

The Midsouth FIA (MIDSO-FIA) unit gratefully acknowledges the cooperation and assistance provided by the Arkansas Forestry Commission and the Green Bay Packing Company in collecting field data. Appreciation is also expressed for the cooperation of other public agencies and private landowners in providing access to measurement plots.

The following members of the MIDSO-FIA staff completed the field measurements:

Lance Asherin	Eric Johnson	Ken Reed
Roger Boyer	Mark Kotal	Brian Slagle
Bobby Claybrook	Russ Langford	Blain Tarbell
Lyndell Davidson	Jeff Martin	Jennifer Tarbell
Debbie Ferguson	Tony Olsen	Jeff Turner
Helene Flounders	Randi Paris	
Daren Hinesly	Leslie Prewitt	

May 1997

Southern Research Station
P.O. Box 2680
Asheville, North Carolina 28802

CONTENTS

INTRODUCTION	1
METHODS	1
STATISTICAL RELIABILITY	2
HIGHLIGHTS	3
Timberland Area	3
Forest Type Group	3
Ownership	3
Stand Size	3
Stand Structure	3
Softwood Volume	3
Hardwood Volume	3
Growth	3
Removals	4
Mortality	4
APPENDIX	4
Definition of Terms	4
Core Tables 1 through 25*	7
Supplemental Tables 26 through 44	26
Figures 1 through 8	42

*Core tables are presented in response to the Southern Industrial Forestry Research Council's recommendations. These tables are identical among Forest Inventory and Analysis units in the Eastern United States.



Figure I.—Forest survey regions in Arkansas.

Forest Statistics for Arkansas' Ozark Counties—1995

James F. Rosson, Jr., and Jack D. London

INTRODUCTION

Tabulated results were derived from data obtained during a 1995 continuous forest inventory of Arkansas' Ozark counties (fig. 1). These data are considered preliminary; a finalized State analytical report will be published after all survey units in the State have been inventoried. Core tables (1 through 25) are compatible among Forest Inventory and Analysis units in the Eastern United States. Supplemental tables (26 through 44) provide information beyond that provided by the core tables. Comparisons are made between results of the 1995 inventory and the previous inventory conducted in 1988.

METHODS

The Southern Research Station, Midsouth Forest Inventory and Analysis (MIDSO-FIA) unit uses a two-phase sample of temporary aerial-photo points and a systematic grid of permanent ground plots. The area of forested land was determined by photointerpretation of temporary points and field checks of permanent plots. Field measurements were conducted on a subset of permanent plots spaced 3 miles apart. Trees were measured on plots that were forested at the time of the current inventory or were forested at the time of the previous inventory.

Each plot consisted of 10 satellite points spread over about 1 acre. At each point, trees 5.0 inches in diameter at breast height (d.b.h.) and larger were selected for measurement on a variable-radius plot defined by a 37.5-factor prism. Thus, each tree selected with the prism represented 3.75 square feet of basal area per acre. Trees from 1.0 to 4.9 inches in d.b.h. were tallied on a 1/275-acre fixed plot at each of the first three points and at any remaining points where fewer than two trees 5.0 inches in d.b.h. or larger were tallied. If no trees greater than 1.0 inch were tallied at a point, then seedlings were tallied. Several plot-level measurements relating to timber and other forest resources were also collected.

Tree data were used to estimate volumes, basal areas, numbers of trees, and other plot-level variables. Ownership information was obtained for each measurement plot using tax records and other sources. Plot-level estimates were expanded using county-level factors derived as part of the forest area determination.

Over successive inventories, techniques have evolved so that some improvements have been implemented. In recent inventories these changes have been mostly minor in scale and have been incorporated because of the availability of better methods or to achieve greater compatibility among Forest

Inventory and Analysis units. These changes may, in some cases, affect the ability to discern minor shifts in resource trends.

The estimates of timberland area, volume, growth, removals, and mortality are based on the latest and most up-to-date inventory techniques available. There are important differences in the methods used between the 1988 and 1995 inventories. In many cases, improvements in methodology for deriving current estimates can raise concerns about apparent trends between survey periods. Because these differences might appear to cloud the comparisons between 1988 and 1995 results, the major differences in procedures follow.

First, to account for changes in a new definition of growing stock, trees classed as rough culls in 1978 and cut in 1988 were changed to growing stock (tree class 20). This procedure was not implemented in the 1995 survey because complete information pertinent to the new definition was collected in 1988. If a live tree classed as a rough cull in the 1988 survey was cut and utilized by the time of the remeasurement in 1995, its tree class remained a rough cull, which will affect direct comparisons of growing-stock growth, removals, and mortality.

Second, a decrease in the utilizable volume allowance was used to classify trees as growing stock or cull. In the 1995 survey, at least one-third of the volume in the sawlog section (or prospective volume, in the case of smaller-than-sawtimber size trees) had to be utilizable. In previous surveys of Arkansas, one-half the volume had to be utilizable. In previous inventories in the Midsouth States, few trees have been affected where this change has been implemented.

Third, the land area base provided by the U.S. Census Bureau has changed. Because the timberland area is determined by summarizing forest vs. nonforest dot counts on aerial photographs (in each county) and then applying the resulting proportions to the Census Bureau land base, a change in the land base between measurement periods will affect area trends. The 1988 survey used the 1980 U.S. Census Bureau land area estimates; the 1995 survey used the 1990 Census Bureau estimates. Much of the change is due to the Census Bureau's new definition of the water classification; a small portion of area previously classified as land is now classified as water. Because the land area estimates between 1980 and 1990 decreased only 2,911 acres for the State, the effect on timberland area trends will be negligible.

To account for these modifications and to better assess trends, the analysis of change in inventory volume, growth, removals, and mortality will focus on live trees rather than on growing stock as has been the practice in the past.

Table I.—Sampling errors* (for one standard error) for timberland, live trees, growing stock, and sawtimber, Ozark counties, Arkansas, 1995

County	Timberland	Live trees			Growing stock			Sawtimber volume
		Volume	Growth	Removals	Volume	Growth	Removals	
		-----Percent-----						
Baxter	4.1	10.5	19.8	34.6	12.8	31.7	34.9	18.1
Benton	2.1	9.2	14.7	49.3	11.2	21.4	52.5	15.7
Boone	3.1	13.9	22.6	61.6	16.6	32.5	62.8	24.0
Carroll	2.5	10.0	14.5	34.6	13.0	34.7	38.2	15.1
Cleburne	3.5	10.9	9.8	31.3	12.1	12.8	31.6	18.8
Conway	4.3	15.9	21.9	63.5	17.2	24.6	64.9	21.1
Crawford	1.5	9.2	100.0	46.4	10.4	100.0	47.8	13.2
Faulkner	3.2	11.6	16.2	50.3	13.7	24.6	54.2	21.1
Franklin	1.9	8.1	14.7	39.6	9.0	13.5	41.3	14.3
Fulton	3.1	19.1	17.9	38.0	22.7	20.0	40.3	37.6
Independence	1.9	9.9	12.5	27.7	11.2	12.8	27.8	15.3
Izard	3.6	10.8	13.7	27.9	13.0	18.5	28.5	17.0
Johnson	1.5	6.4	8.5	41.8	7.0	9.4	42.3	11.2
Madison	2.7	6.8	10.9	30.7	7.6	13.9	32.2	11.5
Marion	4.4	12.2	19.3	32.8	14.3	28.4	34.0	18.9
Newton	1.9	7.0	12.6	32.8	7.6	10.5	34.0	12.1
Pope	1.6	6.5	8.1	29.8	6.8	8.0	30.0	11.6
Randolph	1.9	15.9	11.5	37.2	19.6	16.2	36.7	34.3
Searcy	2.4	7.8	12.3	40.0	8.9	13.9	39.3	13.9
Sharp	3.2	7.5	18.7	33.6	9.7	23.4	38.0	13.0
Stone	2.3	7.2	7.3	42.6	7.9	10.7	43.0	13.7
Van Buren	1.8	6.5	8.0	29.1	7.1	9.3	30.6	12.3
Washington	2.2	8.3	12.2	35.2	9.7	13.8	37.7	15.1
White	2.3	14.1	13.2	38.0	15.1	16.2	38.1	22.2
All counties	0.3	2.1	3.0	7.9	2.3	3.4	8.3	3.6

*By the binomial formula for timberland area and by the random-sampling formula for live tree, growing stock, and sawtimber parameters.

STATISTICAL RELIABILITY

The sampling methods were designed to achieve suitable sampling errors for estimates of area and volume at the State level. Sampling error increases as the area or volume considered decreases. The sampling errors presented in table I are equal to one standard error for the sample estimates and may be used to compute confidence intervals for population data.

As an example, the 95-percent confidence interval for growing-stock volume in Arkansas' Ozark counties is computed as follows:

$$5,878.3 \pm 1.96(0.023 \times 5,878.3) = 5,878.3 \pm 265.0$$

where 1.96 is the number of standard deviations. Therefore, the 95-percent confidence interval is 5,613.3 to 6,143.3 million cubic feet. This interval covers the true growing-stock inventory volume for the region unless a 1-in-20 chance of a random event has occurred.

The results are reported for individual counties, thereby allowing computation of statistical confidence for any combination of counties. Values for individual counties are subject to high sampling errors; users are cautioned about using data for single counties. The sampling error may be estimated for any group of counties by the following formula:

$$SE_g = SE_t \frac{\sqrt{X_t}}{\sqrt{X_g}}$$

where

SE_g = standard error of the estimate (expressed as a percentage) for the group of counties desired

SE_t = standard error of the estimate (expressed as a percentage) for the unit

X_t = total area or volume for the unit

X_g = sum of values for the variable of interest (area or volume) for the group of counties to be combined.

For example, an estimate of the sampling error for growing-stock volume in Benton, Madison, and Washington Counties is computed as:

$$SE_g = 2.3 \frac{\sqrt{5,878.3}}{\sqrt{812.9}} = 6.2$$

Thus, the sampling error is 6.2 percent, and the resulting 95-percent confidence interval for growing-stock volume in the three-county area is 812.9 \pm 98.8 million cubic feet.

Table II.—Components of annual change in the volume of live trees by inventory period and species group, Ozark counties, Arkansas, 1995*

Inventory period and species group	Gross growth		
	Net growth	Mortality	Removals
	----- Million cubic feet -----		
1978 to 1988			
Softwoods	35.5	3.1	18.6
Hardwoods	139.7	49.7	54.1
Total	175.2	52.8	72.7
1988 to 1995			
Softwoods	57.2	3.6	32.4
Hardwoods	146.3	35.6	58.6
Total	203.5	39.2	91.0

*Numbers in columns may not add to totals due to rounding.

HIGHLIGHTS

Timberland Area

Timberland area in the Ozark counties is 6,010,000 acres, an increase of 280,400 acres since the 1988 survey. A total of 658,300 acres reverted to timberland, while 377,900 acres diverted to nonforest use. Sixty-two percent of the reverted acres were from agriculture and 70 percent of the diverted timberland acres went to agriculture.

Forest Type Group

The predominant forest type group in the Ozark counties is the oak-hickory type. This type occurs on 70 percent of timberland (4,211,500 acres) and represents only a slight decrease since 1988. The oak-pine, loblolly-shortleaf, and bottomland hardwood types share the remaining 16, 10, and 4 percent of timberland area, respectively.

Ownership

Most of the timberland area in the Ozark counties is held in nonindustrial private ownership, at 4,689,300 acres (78 percent). A total of 941,200 acres are held by the USDA National Forest System (16 percent). Forest industry holds only 173,900 acres in the unit. Nonindustrial private ownership area increased by 272,200 acres since 1988. There was little change in area in the national forest and forest industry acreage.

Stand Size

Stand structure appears to be maturing in the Ozark counties as noted by an increase in sawtimber stands and a decrease in sapling-seedling stands. The area of sawtimber stands increased by 545,600 acres (30 percent) since the 1988 survey. Sapling-seedling stands decreased by 326,200 acres (21 percent).

Stand Structure

The number of live softwood trees increased in every diameter class. Most significant increases were in the 8.0-inch and larger diameter classes.

The number of live hardwood trees also increased in every diameter class. Most significant increases were in the 10.0-inch and larger diameter classes. There was also a substantial increase in the 2.0-inch diameter class.

The basal area for all live trees averaged 84.8 square feet per acre, up 10 percent from the 1988 survey (76.8 square feet per acre). The hardwood component represents 83 percent of basal area.

Softwood Volume

Softwood live-tree volume increased by 308.4 million cubic feet to 1,221.5 million cubic feet. Volume increased in every diameter class. Shortleaf pine is the dominant softwood with 74 percent of the volume (902.8 million cubic feet). Current total softwood volume is 3,995 million board feet.

Hardwood Volume

Hardwood live-tree volume increased by 1,044.7 million cubic feet to 5,533.7 million cubic feet. Volume increased in every diameter class. The plurality of volume is in the white oak and red oak species groups (66 percent). The hickories make up 13 percent of hardwood volume. Current sawtimber volume is 12,631 million board feet, a 19 percent increase since the 1988 survey.

Growth

Softwood live-tree net growth averaged 57.2 million cubic feet per year, up 62 percent from that reported for 1988 (table II). The current growth-to-removal ratio in the Ozark counties for softwood is 1.77 to 1.

Hardwood live-tree net growth averages 146.3 million cubic feet per year, up 5 percent. The current growth-to-removal ratio for hardwoods is 2.50 to 1.

Removals

Softwood live-tree removals averaged 32.4 million cubic feet per year, up 74 percent from 1988. Softwood removals make up 36 percent of the Ozark counties removals.

Hardwood removals increased slightly, from 54.0 million cubic feet in 1988 to 58.6 million cubic feet in 1995.

Mortality

Softwood mortality has not changed since the last survey. However, hardwood mortality dropped, from 49.5 million cubic feet in 1988 to 35.6 million cubic feet in 1995.

APPENDIX

Definition of Terms

Dimension Classes of Trees

Poletimber trees—Softwoods 5.0 to 8.9 inches in diameter at breast height (d.b.h.) and hardwoods 5.0 to 10.9 inches in d.b.h.

Rough, rotten, and salvable dead trees—See “tree classes.”

Saplings—Trees 1.0 to 4.9 inches in d.b.h.

Sawtimber trees—Trees 9.0 inches and larger in d.b.h. for softwoods and 11.0 inches and larger for hardwoods.

Seedlings—Trees less than 1.0 inch in d.b.h. and greater than 1 foot tall for hardwoods, greater than 6 inches tall for softwoods, and greater than 0.5 inch in diameter at ground level for longleaf pine.

Forest Land Classes

Forest land—Land at least 10 percent stocked by forest trees of any size, or formerly having such tree cover and not currently developed for nonforest uses. Minimum area considered for classification is 1 acre. Forest land is divided into timberland, reserved timberland, and woodland.

Reserved timberland—Productive public forest land withdrawn from timber utilization through statute or administrative regulations.

Timberland—Forest land that is producing, or is capable of producing, crops of industrial wood and is not withdrawn from timber utilization. Timberland is synonymous with “commercial forest land” in previous reports.

Woodland—Forest land incapable of yielding crops of industrial wood because of adverse site conditions.

Forest Type Groups

Elm-ash-cottonwood—Forests in which elms, ashes, or cottonwoods, singly or in combination, comprise a plurality of the stocking. Common associates include willows, sycamore, American beech, and maples.

Loblolly-shortleaf pine—Forests in which pines (except longleaf and slash pines) and eastern redcedar, singly or in combination, comprise a plurality of the stocking. Common associates include oaks, hickories, and gums.

Longleaf-slash pine—Forests in which longleaf or slash pines, singly or in combination, comprise a plurality of the stocking. Common associates include other southern pines, oaks, and gums.

Nontyped—Timberland currently unoccupied by any live trees or seedlings; for example, very recent clearcut areas.

Oak-gum-cypress—Bottomland forests in which tupelo, blackgum, sweetgum, oaks, or southern cypress, singly or in combination, comprises a plurality of the stocking except where pines comprise 25 to 49 percent, in which case the stand would be classified as oak-pine. Common associates include cottonwoods, willows, ashes, elms, hackberry, and maples.

Oak-hickory—Forests in which upland oaks or hickories, singly or in combination, comprise a plurality of the stocking, except where pines comprise 25 to 49 percent, in which case the stand would be classified as oak-pine. Common associates include yellow-poplar, elms, maples, and black walnut.

Oak-pine—Forests in which hardwoods (usually upland oaks) comprise a plurality of the stocking, but in which softwoods, except cypress, comprise 25 to 49 percent of the stocking. Common associates include gums, hickories, and yellow-poplar.

Growth Classes

Gross growth—Total increase in stand volume computed on growing-stock trees or live trees at least 5.0 inches in d.b.h. Gross growth equals survivor growth, plus ingrowth, plus growth on removals, plus growth on mortality, plus cull increment (for growing stock computations). Gross growth includes mortality.

Net change—Increase or decrease in stand volume computed on growing-stock trees or live trees at least 5.0 inches in d.b.h. Net change is equal to net growth minus removals.

Net growth—Increase in stand volume computed on growing-stock trees or live trees at least 5.0 inches in d.b.h. Net growth is equal to gross growth minus mortality.

Miscellaneous Definitions

Average annual mortality—Average annual sound-wood volume of growing-stock or live trees that died from natural causes during the intersurvey period.

Average annual removals—Average net annual volume of growing-stock or live trees removed from the inventory by harvesting, cultural operations (such as timber-stand improvement), land clearing, or changes in land use during the intersurvey period.

Average net annual growth—Average net annual volume increase of growing-stock or live trees during the intersurvey period.

Basal area—The area in square feet of the cross section at breast height of a single tree or of all the trees in a stand, usually expressed in square feet per acre.

Cull increment—The change in growing-stock volume due to growing-stock, rough, or rotten trees changing tree class between surveys.

D.b.h. (diameter at breast height)—Tree diameter in inches, outside bark, usually measured at 4.5 feet above ground.

Diameter classes—The 2-inch diameter classes extend from 1.0 inch below to 0.9 inch above the stated midpoint. Thus, the 12-inch class includes trees 11.0 inches through 12.9 inches in d.b.h.

D.o.b. (diameter outside bark)—Stem diameter including bark.

Log grades—A classification of logs based on external characteristics as indicators of quality or value.

Mortality—Number or sound-wood volume of growing-stock trees or live trees that died from natural causes during a specified period.

Natural stands—Stands with no evidence of artificial regeneration including those stands established by seed-tree regeneration methods.

Plantations—Planted or artificially seeded stands.

Removals—The net volume of growing-stock or live trees removed from the inventory by harvesting, cultural operations (such as timber-stand improvement), land clearing, or changes in land use.

Sawlog portion—That portion of the bole of a sawtimber tree between a 1-foot stump and the sawlog top.

Sawlog top—The point on the bole of a sawtimber tree above which a sawlog cannot be produced. The minimum sawlog top is 7.0 inches in d.o.b. for softwoods and 9.0 inches in d.o.b. for hardwoods.

Select red oaks—A group of several red oak species composed of cherrybark, Shumard, and northern red oaks. Other red oak species are included in the “other red oaks” group.

Select white oaks—A group of several white oak species composed of white, swamp chestnut, swamp white, chinkapin, Durand, and bur oaks. Other white oak species are included in the “other white oaks” group.

Site class—A classification of forest land in terms of its potential capacity to grow crops of industrial wood.

Tree grade—A classification of the sawlog portion of sawtimber trees based on: (1) the grade of the butt log or (2) the ability to produce at least one 12-foot or two 8-foot logs in the upper section of the sawlog portion. Tree grade is an indicator of quality; grade 1 is the best quality.

Upper-stem portion—That part of the main stem of a sawtimber tree above the sawlog top to a d.o.b. of 4.0 inches or to the point where the main stem breaks into limbs.

Ownership Classes

Farmer-owned land—Lands operated as a unit of 10 acres or more and from which the sale of agricultural products totals \$1,000 or more annually.

Forest industry land—Lands owned by companies or individuals operating wood-using plants (either primary or secondary).

National forest land—Federal lands that have been legally designated as national forests or purchase units and other lands under the administration of the Forest Service, including experimental areas.

Nonindustrial private land (corporate)—Lands privately owned by private corporations other than forest industries and incorporated farms.

Nonindustrial private land (individual)—Lands privately owned by individuals other than forest industries or farmers.

Other Federal land—Federal lands other than national forests.

State, county, and municipal land—Lands owned by States, counties, and local public agencies or municipalities, or lands leased to these governmental units for 50 years or more.

Stand-size Classes

Nonstocked stands—Stands less than 10 percent stocked with live trees.

Poletimber stands—Stands at least 10 percent stocked with live trees, with half or more of this stocking in sawtimber or poletimber trees, and with poletimber stocking exceeding that of sawtimber stocking.

Sapling-seedling stands—Stands at least 10 percent stocked with live trees, with more than half of this stocking in saplings or seedlings.

Sawtimber stands—Stands at least 10 percent stocked with live trees, with half or more of this stocking in sawtimber or poletimber trees, and with sawtimber stocking at least equal to poletimber stocking.

Stocking

Stocking is a measure of the extent to which the growth potential of the site is utilized by trees or preempted by vegetative cover. Stocking is determined by comparing the stand density in terms of number of trees or basal area with a specified standard. Therefore, full stocking is 100 percent of the stocking standard.

The following tabulation shows the density standard in terms of trees per acre by size class required for full stocking.

D.b.h.	Trees per acre	D.b.h.	Trees per acre
<i>Inches</i>		<i>Inches</i>	
Seedlings	600	16	72
2	560	18	60
4	460	20	51
6	340	22	42
8	240	24	36
10	155	26	31
12	115	28	27
14	90	30	24

Stocking categories are arbitrarily defined as follows:

Optimally stocked—Stands 61 to 100 percent stocked with growing-stock trees. These stands are growing toward a fully stocked condition (ideal space required for each tree increases with age). Optimum growth and bole form occur in this range.

Overstocked—Stands greater than 100 percent stocked with growing-stock trees. These stands will become stagnant with the mortality of individuals increasing as stocking increases over 100 percent.

Understocked—Stands 0 to 60 percent stocked with growing-stock trees. These stands will take a very long time to reach full stocking. Meanwhile, poor bole form will result, and much of the productivity will be placed on heavy limbs instead of on the bole.

Tree Classes

Commercial species—Tree species currently or potentially suitable for industrial wood products.

Cull trees—Rough or rotten trees.

Growing-stock trees—Living trees of commercial species classified as sawtimber, poletimber, saplings, and seedlings. Trees must contain at least one 12-foot or two 8-foot logs in the sawlog portion currently or potentially (if too small to qualify) to be classed as growing stock. The log(s) must meet dimension and merchantability standards to qualify. Trees must also have currently or potentially one-third of the gross board-foot volume in sound wood.

Hardwoods—Dicotyledonous trees, usually broad leaved and deciduous.

Live trees—All living trees. Included are all size classes, all tree classes, and both commercial and noncommercial species.

Noncommercial species—Tree species of typically small size, poor form, or inferior quality that normally do not develop into trees suitable for industrial wood products.

Rotten trees—Live trees of commercial species that are unmerchantable for sawlogs currently or potentially because of rot deduction in the sawlog section. See definition of growing-stock trees.

Rough trees—Live trees of commercial species that are unmerchantable for sawlogs currently or potentially because of roughness or poor form in the sawlog section. Also included are all live trees of noncommercial species. See definition of growing-stock trees.

Salvable dead trees—Standing or downed dead trees that were formerly growing stock and are considered merchantable. Trees must be at least 5.0 inches in d.b.h. to qualify.

Softwoods—Coniferous trees, usually evergreen, having leaves that are needles or scalelike.

Volume

Volume of cull—The cubic-foot volume of sound wood in rough and rotten trees at least 5.0 inches in d.b.h. from a 1-foot stump to a minimum 4.0-inch top d.o.b. of the central stem or to the point where the central stem breaks into limbs.

Volume of growing stock—The cubic-foot volume of sound wood in growing-stock trees at least 5.0 inches in d.b.h. from a 1-foot stump to a minimum 4.0-inch top d.o.b. of the central stem or to the point where the central stem breaks into limbs.

Volume of live trees—The cubic-foot volume of sound wood in growing-stock, rough, and rotten trees at least 5.0 inches in d.b.h. from a 1-foot stump to a minimum 4.0-inch top d.o.b. of the central stem or to the point where the central stem breaks into limbs.

Volume of sawlog portion of sawtimber trees—The cubic-foot volume of sound wood in the sawlog portion of sawtimber trees. Volume is the net result after deductions for rot, sweep, and other defects that affect use for lumber.

Volume of sawtimber—The board-foot volume (International 1/4-inch Rule) of sound wood in the sawlog portion of sawtimber trees. Volume is the net result after deductions for rot, sweep, and other defects that affect use for lumber.

Volume of timber—The cubic-foot volume of sound wood in growing-stock, rough, rotten, and salvable dead trees at least 5.0 inches in d.b.h. from a 1-foot stump to a minimum 4.0-inch top d.o.b. of the central stem or to the point where the central stem breaks into limbs.

Core Tables 1 through 25

Table 1.—Area by county and land class, Ozark counties, Arkansas, 1995*

County	All land†	Forest land			Reserved timberland	Nonforest land
		Total	Timberland	Woodland		
----- <i>Thousand acres</i> -----						
Baxter	354.8	247.8	208.5	24.8	14.5	107.0
Benton	539.7	222.8	213.1	6.2	3.5	317.0
Boone	378.4	166.9	161.1	5.8	0.0	211.5
Carroll	405.6	218.4	212.5	5.9	0.0	187.2
Cleburne	354.0	224.6	223.4	0.0	1.2	129.4
Conway	356.0	193.5	179.9	13.4	0.2	162.5
Crawford	381.1	234.9	234.9	0.0	0.0	146.2
Faulkner	414.3	190.3	190.1	0.0	0.2	224.0
Franklin	390.1	238.2	238.2	0.0	0.0	152.0
Fulton	395.7	204.7	204.7	0.0	0.0	191.0
Independence	488.9	219.8	219.8	0.0	0.0	269.1
Izard	371.7	253.6	235.0	18.1	0.5	118.1
Johnson	423.8	308.5	302.7	0.0	5.7	115.4
Madison	535.7	354.3	341.2	12.7	0.4	181.3
Marion	382.6	271.3	207.7	34.5	29.1	111.2
Newton	526.7	445.6	367.6	5.3	72.8	81.1
Pope	519.6	354.4	342.8	0.0	11.6	165.3
Randolph	417.2	189.4	189.4	0.0	0.0	227.8
Searcy	427.0	301.4	274.6	0.0	26.8	125.6
Sharp	386.8	242.4	236.0	6.1	0.4	144.4
Stone	388.3	324.9	324.7	0.0	0.2	63.3
Van Buren	455.4	362.3	356.4	5.9	0.0	93.1
Washington	608.2	310.0	299.3	10.7	0.0	298.2
White	661.9	246.4	246.4	0.0	0.0	415.4
All counties	10,563.4	6,326.4	6,010.0	149.3	167.1	4,237.0

*Numbers in columns and rows may not add to totals due to rounding.

[†]From the U.S. Bureau of the Census.

Table 2.—Area of timberland by county and ownership class, Ozark counties, Arkansas, 1995*

County	All ownerships	National forest	Misc. Federal	State	County and municipal	Forest industry [†]	Farmer	Corporate [‡]	Individual [‡]
<i>----- Thousand acres -----</i>									
Baxter	208.5	53.3	12.4	0.0	0.0	0.0	37.3	12.4	93.2
Benton	213.1	8.5	12.4	12.4	0.0	0.0	49.6	62.0	68.2
Boone	161.1	0.0	0.0	0.0	0.0	0.0	74.8	5.8	80.6
Carroll	212.5	0.0	5.9	0.0	0.0	0.0	94.4	23.6	88.5
Cleburne	223.4	0.0	0.0	0.0	0.0	42.6	53.2	16.0	111.7
Conway	179.9	5.3	0.0	20.1	0.0	13.4	40.3	13.4	87.3
Crawford	234.9	91.1	0.0	0.0	0.0	0.0	47.9	0.0	95.9
Faulkner	190.1	0.0	10.3	5.1	0.0	0.0	30.8	41.1	102.7
Franklin	238.2	95.8	7.5	0.0	0.0	0.0	67.4	7.5	59.9
Fulton	204.7	0.0	6.2	0.0	0.0	0.0	74.4	12.4	111.7
Independence	219.8	0.0	0.0	0.0	0.0	33.3	73.3	33.3	79.9
Izard	235.0	0.0	0.0	0.0	0.0	0.0	72.3	18.1	144.6
Johnson	302.7	168.7	5.4	0.0	0.0	0.0	16.1	5.4	107.2
Madison	341.2	43.5	0.0	12.7	0.0	0.0	101.4	19.0	164.7
Marion	207.7	0.5	0.0	0.0	0.0	0.0	89.8	0.0	117.4
Newton	367.6	167.7	0.0	5.3	0.0	0.0	47.3	5.3	142.0
Pope	342.8	178.1	0.0	6.9	0.0	0.0	48.0	6.9	102.9
Randolph	189.4	0.0	0.0	8.2	8.2	0.0	74.1	8.2	90.6
Searcy	274.6	23.7	6.0	6.0	0.0	0.0	89.6	23.9	125.5
Sharp	236.0	0.0	0.0	18.2	0.0	0.0	66.6	12.1	139.2
Stone	324.7	57.1	0.0	0.0	0.0	31.1	93.3	6.2	136.9
Van Buren	356.4	31.2	0.0	11.8	0.0	47.3	130.1	5.9	130.1
Washington	299.3	16.9	0.0	0.0	0.0	0.0	74.6	21.3	186.5
White	246.4	0.0	0.0	24.6	0.0	6.2	117.0	18.5	80.1
All counties	6,010.0	941.2	66.0	131.3	8.2	173.9	1,663.8	378.2	2,647.3

*Numbers in columns and rows may not add to totals due to rounding.

[†]Includes land leased to forest industries.[‡]Land owned by Indians will be classed as corporate or individual as defined by the Bureau of Indian Affairs.

Table 3.—Area of timberland by county and forest type group, Ozark counties, Arkansas, 1995*

Table 3. Area of timberland by county and forest type group, 2000 (continued)

County	Total	Forest type group					
		Loblolly-shortleaf pine		Oak-pine	Oak-hickory	Oak-gum-cypress	Elm-ash-cottonwood
		Planted	Natural				
Baxter	208.5	0.0	12.4	48.5	147.6	0.0	0.0
Benton	213.1	0.0	0.0	12.4	194.5	0.0	6.2
Boone	161.1	0.0	5.8	11.5	138.1	0.0	5.8
Carroll	212.5	0.0	0.0	41.3	165.3	5.9	0.0
Cleburne	223.4	26.6	21.3	58.5	111.7	5.3	0.0
Conway	179.9	0.0	38.9	53.7	53.7	20.1	13.4
Crawford	234.9	7.6	7.6	62.4	150.5	6.8	0.0
Faulkner	190.1	15.4	5.1	15.4	123.3	30.8	0.0
Franklin	238.2	0.0	29.3	36.2	165.2	7.5	0.0
Fulton	204.7	6.2	12.4	18.6	167.5	0.0	0.0
Independence	219.8	6.7	33.3	46.6	119.9	13.3	0.0
Izard	235.0	6.0	48.2	54.2	126.6	0.0	0.0
Johnson	302.7	21.7	27.0	59.3	194.7	0.0	0.0
Madison	341.2	0.0	6.3	25.3	309.5	0.0	0.0
Marion	207.7	0.0	6.9	27.6	173.2	0.0	0.0
Newton	367.6	0.0	17.7	26.3	323.6	0.0	0.0
Pope	342.8	11.8	57.1	73.6	193.4	6.9	0.0
Randolph	189.4	0.0	8.2	16.5	140.0	24.7	0.0
Searcy	274.6	0.0	6.0	33.3	229.4	6.0	0.0
Sharp	236.0	0.0	12.1	48.4	175.5	0.0	0.0
Stone	324.7	6.2	26.7	57.8	233.9	0.0	0.0
Van Buren	356.4	40.0	29.6	87.3	199.6	0.0	0.0
Washington	299.3	0.0	14.0	10.7	264.0	5.3	5.3
White	246.4	18.5	18.5	24.6	110.9	61.6	12.3
All counties	6,010.0	166.6	444.5	950.0	4,211.5	194.3	43.0

*Numbers in columns and rows may not add to totals due to rounding.

Table 4.—Area of timberland by county and stand-size class, Ozark counties, Arkansas, 1995*

County	All classes	Stand-size class			Nonstocked areas
		Sawtimber	Poletimber	Sapling- seedling	
----- <i>Thousand acres</i> -----					
Baxter	208.5	91.7	79.6	37.3	0.0
Benton	213.1	132.5	43.4	37.2	0.0
Boone	161.1	69.0	57.5	34.5	0.0
Carroll	212.5	129.9	41.3	41.3	0.0
Cleburne	223.4	74.5	90.4	58.5	0.0
Conway	179.9	65.7	40.3	73.9	0.0
Crawford	234.9	165.7	48.7	20.5	0.0
Faulkner	190.1	36.0	71.9	82.2	0.0
Franklin	238.2	121.5	102.3	14.3	0.0
Fulton	204.7	37.2	93.1	74.4	0.0
Independence	219.8	99.9	73.3	46.6	0.0
Izard	235.0	66.3	108.5	60.3	0.0
Johnson	302.7	140.8	134.8	27.0	0.0
Madison	341.2	159.3	124.9	57.0	0.0
Marion	207.7	69.1	76.5	62.2	0.0
Newton	367.6	182.6	145.3	39.7	0.0
Pope	342.8	153.1	157.3	32.4	0.0
Randolph	189.4	41.2	90.6	57.6	0.0
Searcy	274.6	109.1	110.9	54.6	0.0
Sharp	236.0	36.3	133.1	66.6	0.0
Stone	324.7	103.2	179.4	42.1	0.0
Van Buren	356.4	80.6	224.0	51.8	0.0
Washington	299.3	100.7	140.0	58.6	0.0
White	246.4	86.2	98.6	61.6	0.0
All counties	6,010.0	2,352.1	2,465.6	1,192.2	0.0

*Numbers in columns and rows may not add to totals due to rounding.

Table 5.—Area of timberland by county and site class, Ozark counties, Arkansas, 1995*

County	All classes	Site class (<i>cubic feet/acre/year</i>)				
		>165	120–165	85–120	50–85	<50
----- <i>Thousand acres</i> -----						
Baxter	208.5	0.0	0.0	12.1	116.0	80.5
Benton	213.1	0.0	6.2	12.4	122.1	72.4
Boone	161.1	0.0	0.0	0.0	86.3	74.8
Carroll	212.5	0.0	0.0	0.0	112.1	100.3
Cleburne	223.4	0.0	5.3	21.3	170.2	26.6
Conway	179.9	0.0	13.4	53.7	99.3	13.4
Crawford	234.9	0.0	0.0	28.9	77.6	128.5
Faulkner	190.1	0.0	5.1	36.0	61.6	87.3
Franklin	238.2	0.0	6.8	28.7	121.5	81.1
Fulton	204.7	0.0	6.2	0.0	124.1	74.4
Independence	219.8	0.0	0.0	33.3	146.5	40.0
Izard	235.0	0.0	6.0	30.1	162.7	36.2
Johnson	302.7	0.0	0.0	80.7	184.1	37.9
Madison	341.2	0.0	0.0	0.0	172.9	168.3
Marion	207.7	0.0	0.0	13.8	124.8	69.1
Newton	367.6	0.0	0.0	6.2	186.9	174.5
Pope	342.8	0.0	6.9	42.3	238.4	55.2
Randolph	189.4	8.2	8.2	8.2	74.1	90.6
Searcy	274.6	0.0	0.0	35.8	130.4	108.3
Sharp	236.0	0.0	0.0	6.1	127.1	102.9
Stone	324.7	0.0	0.0	6.2	203.2	115.3
Van Buren	356.4	0.0	0.0	29.6	262.5	64.3
Washington	299.3	0.0	0.0	5.3	95.4	198.6
White	246.4	0.0	18.5	55.4	110.9	61.6
All counties	6,010.0	8.2	82.7	546.1	3,310.7	2,062.2

*Numbers in columns and rows may not add to totals due to rounding.

Table 6.—Area of timberland by county and stocking class of growing-stock trees, Ozark counties, Arkansas, 1995*

County	All classes	Stocking class (<i>percent</i>)				
		>130	100-130	60-100	16.7-60	<16.7
		----- <i>Thousand acres</i> -----				
Baxter	208.5	0.0	24.6	103.8	80.2	0.0
Benton	213.1	0.0	16.6	115.9	74.4	6.2
Boone	161.1	0.0	0.0	80.6	80.6	0.0
Carroll	212.5	0.0	11.8	64.9	135.8	0.0
Cleburne	223.4	5.3	37.2	122.3	58.5	0.0
Conway	179.9	13.4	20.1	106.0	40.3	0.0
Crawford	234.9	0.0	56.3	114.0	64.6	0.0
Faulkner	190.1	5.1	15.4	107.9	61.6	0.0
Franklin	238.2	0.0	48.6	130.3	59.3	0.0
Fulton	204.7	6.2	12.4	68.2	111.7	6.2
Independence	219.8	0.0	46.6	106.6	66.6	0.0
Izard	235.0	6.0	24.1	120.5	78.3	6.0
Johnson	302.7	0.0	70.4	199.9	32.4	0.0
Madison	341.2	0.0	43.4	202.7	95.0	0.0
Marion	207.7	6.9	20.7	117.9	62.2	0.0
Newton	367.6	12.4	115.7	197.4	42.1	0.0
Pope	342.8	0.0	81.9	244.2	16.8	0.0
Randolph	189.4	0.0	0.0	115.3	74.1	0.0
Searcy	274.6	0.0	30.7	168.8	75.1	0.0
Sharp	236.0	0.0	0.0	133.1	84.7	18.2
Stone	324.7	6.2	39.2	229.5	49.8	0.0
Van Buren	356.4	0.0	93.2	233.6	29.6	0.0
Washington	299.3	5.3	35.3	141.4	117.2	0.0
White	246.4	6.2	43.1	154.0	43.1	0.0
All counties	6,010.0	73.2	887.3	3,379.1	1,633.9	36.6

*Numbers in columns and rows may not add to totals due to rounding.

Table 7.—Area of timberland by forest type group and ownership class, Ozark counties, Arkansas, 1995*

Forest type group	All ownerships	National forest	Other public	Forest industry	Forest industry- leased	Other private
<i>Thousand acres</i>						
Loblolly-shortleaf pine	611.1	135.1	11.6	76.3	0.0	388.2
Softwood total	611.1	135.1	11.6	76.3	0.0	388.2
Oak-pine	950.0	99.7	36.6	56.0	0.0	757.7
Oak-hickory	4,211.5	706.5	99.7	41.6	0.0	3,363.7
Oak-gum-cypress	194.3	0.0	44.7	0.0	0.0	149.6
Elm-ash-cottonwood	43.0	0.0	12.9	0.0	0.0	30.1
Hardwood total	5,398.8	806.2	194.0	97.6	0.0	4,301.1
All types	6,010.0	941.2	205.6	173.9	0.0	4,689.3

*Numbers in columns and rows may not add to totals due to rounding.

Table 8.—Area of timberland by ownership and stocking class of growing-stock trees, Ozark counties, Arkansas, 1995*

Ownership class	All classes	Stocking class (<i>percent</i>)				
		>130	100-130	60-100	16.7-60	<16.7
		----- <i>Thousand acres</i> -----				
National forest	941.2	12.4	278.4	571.8	78.6	0.0
Other public	205.6	6.7	30.0	110.9	58.0	0.0
Forest industry	173.9	0.0	90.1	83.8	0.0	0.0
Other private	4,689.3	54.0	488.9	2,612.5	1,497.2	36.6
All ownerships	6,010.0	73.2	887.3	3,379.1	1,633.9	36.6

*Numbers in columns and rows may not add to totals due to rounding.

Table 9.—Area of timberland by forest type group and stand-size class, Ozark counties, Arkansas, 1995*

Forest type group	All classes	Stand-size class			Nonstocked areas
		Sawtimber	Poletimber	Sapling- seedling	
		----- <i>Thousand acres</i> -----			
Loblolly-shortleaf pine	611.1	249.8	235.7	125.6	0.0
Softwood total	611.1	249.8	235.7	125.6	0.0
Oak-pine	950.0	255.0	407.8	287.3	0.0
Oak-hickory	4,211.5	1,706.2	1,786.5	718.8	0.0
Oak-gum-cypress	194.3	115.4	35.7	43.3	0.0
Elm-ash-cottonwood	43.0	25.8	0.0	17.2	0.0
Hardwood total	5,398.8	2,102.3	2,229.9	1,066.6	0.0
All types	6,010.0	2,352.1	2,465.6	1,192.2	0.0

*Numbers in columns and rows may not add to totals due to rounding.

Table 10.—Number of live trees on timberland by species and diameter class, Ozark counties, Arkansas, 1995*

Species	All classes	Diameter class (inches at breast height)											
		1.0– 2.9	3.0– 4.9	5.0– 6.9	7.0– 8.9	9.0– 10.9	11.0– 12.9	13.0– 14.9	15.0– 16.9	17.0– 18.9	19.0– 20.9	21.0– 28.9	≥29.0
Thousand trees													
Shortleaf-loblolly pines	270,060	82,565	71,941	46,330	31,498	18,195	9,931	5,616	2,387	1,038	356	205	0
Cypress	324	0	4	118	0	0	29	64	0	28	36	33	12
Other softwoods	334,988	214,103	69,502	25,423	16,015	6,072	2,168	1,218	324	137	11	14	0
Total softwoods	605,372	296,667	141,447	71,871	47,512	24,267	12,128	6,898	2,711	1,202	403	253	12
Select white oaks	323,461	119,703	62,449	52,483	34,522	23,444	13,343	7,949	4,184	2,406	1,499	1,404	74
Select red oaks	95,806	33,150	13,218	11,672	10,671	8,401	6,821	4,814	2,991	1,733	1,180	1,055	100
Other white oaks	260,117	93,665	69,934	34,998	24,746	15,771	8,870	5,686	3,100	1,567	813	938	27
Other red oaks	282,630	128,315	54,724	31,279	20,392	17,724	11,261	7,619	4,665	2,637	2,001	1,810	202
Hickories	581,598	331,147	123,603	62,474	32,815	16,118	8,810	3,786	1,555	741	281	260	7
Hard maples	61,498	37,173	13,304	4,440	2,852	1,851	962	440	218	133	97	29	0
Soft maples	128,544	94,696	19,934	8,002	3,095	1,382	495	346	231	164	79	120	0
Beech	12,349	8,916	1,150	946	328	135	220	176	49	131	135	162	0
Sweetgum	70,420	36,310	9,120	8,770	7,206	3,973	1,994	1,202	944	452	191	239	18
Tupelos–blackgums	166,587	115,959	26,060	9,671	5,741	3,026	2,146	1,160	1,248	753	332	463	29
Ashes	73,488	46,263	14,167	5,031	2,971	2,014	1,233	683	540	208	186	155	36
Cottonwood–aspen	215	0	0	0	0	0	0	0	0	25	34	107	49
Basswood	2,934	2,131	6	270	58	95	118	132	52	36	19	18	0
Yellow–poplar	29	0	0	0	0	0	0	0	18	0	11	0	0
Black walnut	9,263	1,157	3,872	1,040	1,233	1,099	353	208	117	79	63	40	0
Other hardwoods	991,724	781,363	150,443	35,181	11,441	6,497	3,344	1,461	977	368	294	349	5
Total hardwoods	3,060,662	1,829,949	561,986	266,256	158,071	101,532	59,969	35,662	20,890	11,432	7,215	7,151	548
Noncommercial	300,720	233,139	44,769	11,151	6,017	2,479	1,613	655	553	211	93	41	0
All species	3,966,754	2,359,755	748,202	349,277	211,600	128,278	73,710	43,216	24,154	12,845	7,712	7,445	560

*Numbers in columns and rows may not add to totals due to rounding.

Table 11.—Number of growing-stock trees on timberland by species and diameter class, Ozark counties, Arkansas, 1995*

Species	All classes	Diameter class (inches at breast height)											
		1.0– 2.9	3.0– 4.9	5.0– 6.9	7.0– 8.9	9.0– 10.9	11.0– 12.9	13.0– 14.9	15.0– 16.9	17.0– 18.9	19.0– 20.9	21.0– 28.9	≥29.0
		-----Thousand trees-----											
Shortleaf-loblolly pines	211,484	44,583	56,976	42,828	30,421	17,351	9,874	5,597	2,293	1,023	356	183	0
Cypress	304	0	0	118	0	0	29	64	0	28	25	33	7
Other softwoods	254,070	162,032	51,254	20,679	13,122	4,020	1,653	950	249	99	11	0	0
Total softwoods	465,858	206,616	108,230	63,625	43,542	21,371	11,557	6,610	2,542	1,150	392	216	7
Select white oaks	212,036	43,785	45,737	45,193	31,925	20,807	10,974	6,563	3,287	1,831	1,055	854	25
Select red oaks	56,058	4,947	10,010	10,177	9,378	6,910	5,482	3,681	2,343	1,313	965	794	58
Other white oaks	133,808	22,472	37,068	27,539	21,593	12,798	5,778	3,604	1,535	661	436	316	9
Other red oaks	187,617	58,796	41,525	27,214	18,644	16,510	9,340	6,629	3,687	2,214	1,584	1,348	126
Hickories	261,118	91,875	66,842	49,198	27,539	13,741	6,724	2,980	1,232	568	240	171	7
Hard maples	26,776	9,735	9,114	3,451	2,008	1,344	540	207	192	107	50	29	0
Soft maples	36,459	18,670	9,380	5,128	1,748	698	261	202	164	96	32	79	0
Beech	6,675	3,851	1,150	854	202	135	132	66	49	68	82	86	0
Sweetgum	46,060	18,593	5,932	6,937	6,579	3,604	1,669	1,077	865	402	168	217	18
Tupelos-blackgums	60,815	30,717	11,167	7,637	4,304	2,570	1,478	883	930	600	198	316	15
Ashes	18,580	6,602	2,822	3,702	1,848	1,500	872	450	392	129	146	88	27
Cottonwood-aspen	215	0	0	0	0	0	0	0	0	25	34	107	49
Basswood	1,361	582	3	270	58	95	118	132	52	25	9	18	0
Yellow-poplar	29	0	0	0	0	0	0	0	18	0	11	0	0
Black walnut	4,539	13	1,714	474	898	724	330	173	101	48	52	13	0
Other hardwoods	214,867	135,214	45,653	18,059	6,886	4,270	2,255	1,061	687	292	235	252	5
Total hardwoods	1,267,012	445,852	288,117	205,833	133,610	85,704	45,953	27,706	15,535	8,378	5,297	4,688	340
All species	1,732,870	652,468	396,347	269,458	177,152	107,075	57,509	34,316	18,077	9,528	5,689	4,904	347

*Numbers in columns and rows may not add to totals due to rounding.

Table 12.—Volume of growing stock on timberland by species and diameter class, Ozark counties, Arkansas, 1995*

Species	All classes	Diameter class (<i>inches at breast height</i>)									
		5.0– 6.9	7.0– 8.9	9.0– 10.9	11.0– 12.9	13.0– 14.9	15.0– 16.9	17.0– 18.9	19.0– 20.9	21.0– 28.9	≥29.0
		<i>----- Million cubic feet -----</i>									
Shortleaf-loblolly pines	981.7	89.7	174.6	202.1	183.7	154.7	86.7	53.2	23.5	13.7	0.0
Cypress	8.6	0.3	0.0	0.0	0.5	1.7	0.0	1.5	1.5	1.8	1.4
Other softwoods	174.7	41.4	57.0	33.2	19.5	15.3	5.3	2.7	0.4	0.0	0.0
Total softwoods	1,165.1	131.4	231.5	235.3	203.7	171.7	92.0	57.3	25.3	15.4	1.4
Select white oaks	1,155.3	120.8	195.5	227.5	189.7	151.9	97.2	70.8	51.1	49.2	1.7
Select red oaks	566.6	27.0	54.7	72.3	89.4	85.1	72.8	53.0	49.8	55.8	6.8
Other white oaks	493.9	59.1	100.6	107.1	73.4	64.3	36.0	19.8	16.9	15.5	1.2
Other red oaks	958.0	58.8	96.4	153.2	140.2	141.8	105.8	84.8	74.6	88.6	13.8
Hickories	616.1	98.2	131.8	125.4	105.4	66.0	38.2	23.7	12.4	13.7	1.4
Hard maples	58.6	7.5	11.7	13.3	8.2	4.3	5.5	4.1	2.4	1.7	0.0
Soft maples	52.0	11.7	10.8	6.9	3.3	4.5	4.5	3.3	1.9	5.2	0.0
Beech	20.9	1.6	1.1	1.1	2.1	1.4	1.5	3.4	4.3	4.5	0.0
Sweetgum	226.6	15.2	38.2	39.6	30.0	27.9	30.6	17.2	9.7	16.2	2.1
Tupelos-blackgums	183.6	17.0	21.8	23.9	22.0	18.0	25.9	23.0	9.6	20.8	1.5
Ashes	86.8	8.6	10.2	14.3	12.8	9.2	10.8	4.8	7.2	6.0	2.9
Cottonwood-aspen	24.0	0.0	0.0	0.0	0.0	0.0	0.0	1.4	2.3	9.9	10.4
Basswood	14.5	0.5	0.3	1.1	2.3	3.4	2.2	1.3	0.8	2.6	0.0
Yellow-poplar	1.2	0.0	0.0	0.0	0.0	0.0	0.6	0.0	0.6	0.0	0.0
Black walnut	27.2	1.1	4.3	6.6	4.4	3.8	3.1	1.6	1.9	0.4	0.0
Other hardwoods	227.7	39.5	35.4	39.9	34.5	22.7	19.9	10.8	9.9	14.7	0.3
Total hardwoods	4,713.2	466.3	712.9	832.2	717.8	604.3	454.4	323.0	255.4	304.7	42.1
All species	5,878.3	597.7	944.4	1,067.5	921.5	776.0	546.4	380.4	280.7	320.1	43.5

*Numbers in columns and rows may not add to totals due to rounding.

Table 13.—Volume of growing stock in the sawlog portion of sawtimber trees on timberland by species and diameter class, Ozark counties, Arkansas, 1995*

Species	All classes	Diameter class (<i>inches at breast height</i>)							
		9.0– 10.9	11.0– 12.9	13.0– 14.9	15.0– 16.9	17.0– 18.9	19.0– 20.9	21.0– 28.9	≥29.0
		----- <i>Million cubic feet</i> -----							
Shortleaf–loblolly pines	596.9	164.2	155.8	129.3	72.2	44.9	19.9	10.6	0.0
Cypress	7.2	0.0	0.4	1.5	0.0	1.3	1.4	1.5	1.2
Other softwoods	64.2	26.5	16.4	13.7	4.7	2.4	0.3	0.0	0.0
Total softwoods	668.3	190.7	172.6	144.5	77.0	48.6	21.7	12.0	1.2
Select white oaks	468.3	0.0	138.5	117.7	75.5	56.2	40.9	38.1	1.4
Select red oaks	328.6	0.0	66.1	67.9	59.0	43.9	41.3	44.8	5.6
Other white oaks	175.6	0.0	55.4	50.1	28.6	15.3	12.8	12.3	1.1
Other red oaks	512.7	0.0	104.3	113.5	84.4	67.2	59.8	72.0	11.5
Hickories	201.3	0.0	78.1	51.9	30.4	18.5	10.1	11.0	1.4
Hard maples	20.5	0.0	6.0	3.3	4.6	3.1	2.0	1.5	0.0
Soft maples	18.4	0.0	2.2	3.6	3.7	2.9	1.4	4.6	0.0
Beech	12.4	0.0	1.3	0.9	1.0	2.5	3.3	3.4	0.0
Sweetgum	108.2	0.0	21.4	22.8	26.0	14.9	8.0	13.4	1.8
Tupelos–blackgums	99.2	0.0	15.2	13.9	22.3	19.9	8.2	18.3	1.3
Ashes	42.3	0.0	9.1	7.1	8.5	3.6	6.2	5.2	2.5
Cottonwood–aspen	22.4	0.0	0.0	0.0	0.0	1.2	2.1	8.9	10.1
Basswood	10.1	0.0	1.6	2.7	1.9	1.0	0.7	2.2	0.0
Yellow–poplar	1.1	0.0	0.0	0.0	0.5	0.0	0.6	0.0	0.0
Black walnut	11.6	0.0	3.1	2.9	2.4	1.3	1.5	0.4	0.0
Other hardwoods	86.9	0.0	24.0	17.6	16.1	8.8	8.0	12.2	0.3
Total hardwoods	2,119.7	0.0	526.4	475.9	365.1	260.3	206.7	248.3	37.0
All species	2,788.0	190.7	699.0	620.4	442.1	308.9	228.4	260.3	38.2

*Numbers in columns and rows may not add to totals due to rounding.

Table 14.—*Volume of sawtimber on timberland by species and diameter class, Ozark counties, Arkansas, 1995**

Species	All classes	Diameter class (inches at breast height)							
		9.0– 10.9	11.0– 12.9	13.0– 14.9	15.0– 16.9	17.0– 18.9	19.0– 20.9	21.0– 28.9	≥29.0
		----- Million board feet [†] -----							
Shortleaf-loblolly pines	3,633.3	887.2	925.0	826.9	474.4	305.0	138.9	75.7	0.0
Cypress	41.6	0.0	2.1	7.9	0.0	7.8	8.0	8.0	7.9
Other softwoods	320.3	128.9	81.9	69.1	25.2	13.3	1.9	0.0	0.0
Total softwoods	3,995.1	1,016.1	1,009.0	904.0	499.7	326.1	148.8	83.7	7.9
Select white oaks	2,805.0	0.0	775.0	697.3	458.6	357.0	267.0	241.4	8.8
Select red oaks	2,005.9	0.0	370.4	401.5	361.1	274.5	266.3	295.5	36.5
Other white oaks	1,012.5	0.0	292.6	284.0	174.3	96.1	81.5	77.2	6.8
Other red oaks	3,052.0	0.0	563.8	655.4	508.4	419.1	380.9	456.1	68.2
Hickories	1,202.9	0.0	437.9	307.7	189.6	118.9	64.9	75.7	8.2
Hard maples	122.0	0.0	33.8	19.5	28.0	19.6	12.3	8.8	0.0
Soft maples	106.3	0.0	12.5	21.2	21.3	15.8	8.6	26.8	0.0
Beech	79.0	0.0	7.4	5.3	6.4	16.5	20.5	22.9	0.0
Sweetgum	644.0	0.0	118.2	132.2	152.4	90.1	51.7	88.6	10.8
Tupelos-blackgums	581.3	0.0	81.4	77.4	128.4	124.6	50.5	110.1	8.9
Ashes	242.1	0.0	49.6	41.6	49.7	21.7	38.3	28.2	13.0
Cottonwood-aspen	133.6	0.0	0.0	0.0	0.0	8.7	12.6	55.1	57.2
Basswood	66.9	0.0	9.4	16.5	12.5	6.8	4.8	16.8	0.0
Yellow-poplar	6.6	0.0	0.0	0.0	3.1	0.0	3.4	0.0	0.0
Black walnut	67.4	0.0	16.8	17.7	14.7	8.7	8.6	1.0	0.0
Other hardwoods	503.9	0.0	132.0	101.5	96.3	51.1	48.3	73.0	1.6
Total hardwoods	12,631.3	0.0	2,900.9	2,779.0	2,204.9	1,629.1	1,320.3	1,577.1	220.1
All species	16,626.4	1,016.1	3,909.9	3,682.9	2,704.5	1,955.2	1,469.1	1,660.7	228.0

*Numbers in columns and rows may not add to totals due to rounding.

[†]International 1/4-inch Rule.

Table 15.—Volume of growing stock and sawtimber on timberland by county and species group, Ozark counties, Arkansas, 1995*

County	Growing stock						Sawtimber					
	Softwood			Hardwood			Softwood			Hardwood		
	All species	Pine			Soft [†]	Hard [‡]	All species	Pine			Soft [†]	Hard [‡]
		Planted	Natural	Other				Planted	Natural	Other		
----- Million cubic feet -----												
Baxter	182.8	0.0	28.2	8.6	15.9	130.1	525.5	0.0	115.2	17.7	38.6	353.9
Benton	228.2	0.0	4.6	1.1	23.3	199.2	750.7	0.0	25.4	3.1	65.1	657.1
Boone	115.3	0.0	0.9	3.3	3.6	107.6	332.5	0.0	4.1	0.0	9.8	318.6
Carroll	129.1	0.0	11.3	1.5	5.5	110.9	378.6	0.0	45.4	2.8	13.1	317.2
Cleburne	218.3	25.6	73.2	5.2	22.0	92.2	611.0	80.6	305.2	13.2	51.2	160.8
Conway	153.0	3.7	55.7	11.7	29.1	52.9	449.5	13.2	203.5	39.3	82.4	111.1
Crawford	251.2	8.4	23.0	13.7	42.7	163.4	816.8	17.4	109.7	26.1	126.8	536.8
Faulkner	122.3	4.8	3.8	5.4	29.5	78.9	302.3	7.5	13.0	8.6	77.2	195.9
Franklin	294.1	8.7	42.9	9.3	60.2	173.0	899.0	36.2	168.2	19.2	143.7	531.7
Fulton	138.9	29.7	3.9	3.3	7.5	94.5	361.9	130.8	1.8	5.9	16.7	206.7
Independence	209.6	8.7	48.8	8.7	25.0	118.4	573.8	25.5	159.7	9.4	50.4	328.7
Izard	158.0	0.3	55.4	9.8	8.8	83.6	331.2	0.0	153.1	14.4	15.7	148.0
Johnson	422.3	26.7	71.7	7.2	73.6	243.1	1,349.3	97.0	277.3	16.1	231.8	727.1
Madison	357.3	0.0	14.1	5.2	45.3	292.8	1,042.4	0.0	60.7	13.3	145.3	823.1
Marion	140.3	0.0	6.6	8.9	6.3	118.4	355.5	0.0	26.7	5.1	14.7	309.0
Newton	500.9	0.0	49.5	7.1	50.8	393.6	1,430.9	0.0	201.1	12.5	160.6	1,056.7
Pope	486.7	6.0	128.1	12.4	52.7	287.6	1,559.2	0.0	568.0	20.4	158.3	812.4
Randolph	127.5	0.0	0.0	4.0	23.2	100.3	362.7	0.0	0.0	12.8	63.6	286.3
Searcy	278.9	0.0	32.3	5.0	34.0	207.5	758.9	0.0	141.5	8.3	97.6	511.6
Sharp	128.4	2.3	10.9	7.7	5.4	102.0	236.3	9.0	27.0	7.7	10.0	182.6
Stone	341.6	6.2	45.6	11.3	40.4	238.0	858.1	6.8	169.7	19.7	103.1	558.7
Van Buren	379.8	28.9	76.3	9.5	33.8	231.3	840.6	22.9	276.5	14.1	91.2	435.8
Washington	227.4	4.3	9.2	9.7	23.5	180.7	573.9	8.9	43.5	22.5	33.0	466.0
White	286.2	2.5	18.8	14.1	120.0	130.8	925.9	0.0	81.0	49.5	432.8	362.7
All counties	5,878.3	166.9	814.8	183.3	782.2	3,931.0	16,626.4	455.8	3,177.4	361.8	2,233.0	10,398.4

*Numbers in columns and rows may not add to totals due to rounding.

[†]Hardwood species with an average specific gravity of 0.50 or less such as gums, yellow-poplar, cottonwoods, red maple, basswoods, aspens, and willows.[‡]Hardwood species with an average specific gravity greater than 0.50 such as oaks, hard maples, hickories, and green and white ash.[§]International 1/4-inch Rule.

Table 16.—Volume of timber on timberland by class of timber and species group, Ozark counties, Arkansas, 1995*

Class of timber	All species	Softwood			Hardwood	
		Pine			Soft†	Hard‡
		Planted	Natural	Other		
----- Million cubic feet -----						
Sawtimber trees						
Sawlog portion	2,788.0	77.2	519.7	71.4	379.3	1,740.4
Upper-stem portion	715.9	15.9	104.6	13.3	90.1	491.9
Total	3,503.9	93.2	624.3	84.7	469.4	2,232.3
Poletimber trees	2,374.4	73.7	190.6	98.7	312.8	1,698.6
All growing-stock trees	5,878.3	166.9	814.8	183.3	782.2	3,931.0
Rough trees						
Sawtimber size	448.5	2.1	6.6	20.2	45.4	374.2
Poletimber size	327.2	5.4	6.2	15.5	72.1	228.0
Total	775.7	7.5	12.8	35.7	117.5	602.2
Rotten trees						
Sawtimber size	92.2	0.0	0.0	0.5	23.0	68.7
Poletimber size	9.1	0.0	0.0	0.0	2.1	7.0
Total	101.3	0.0	0.0	0.5	25.1	75.7
Salvable dead trees						
Sawtimber size	23.8	0.0	1.4	1.1	6.1	15.2
Poletimber size	25.2	0.5	1.7	1.9	4.1	17.0
Total	48.9	0.5	3.1	3.0	10.2	32.2
All classes	6,804.2	174.9	830.7	222.5	935.0	4,641.1

*Numbers in columns and rows may not add to totals due to rounding.

†Hardwood species with an average specific gravity of 0.50 or less such as gums, yellow-poplar, cottonwoods, red maple, basswoods, aspens, and willows.

‡Hardwood species with an average specific gravity greater than 0.50 such as oaks, hard maples, hickories, and green and white ash.

Table 17.—Volume of live trees and growing stock on timberland by ownership class and species group, Ozark counties, Arkansas, 1995*

Ownership class	Live trees						Growing stock					
	All species	Softwood			Hardwood		All species	Softwood			Hardwood	
		Pine			Soft [†]	Hard [‡]		Pine			Soft [†]	Hard [‡]
		Planted	Natural	Other				Planted	Natural	Other		
----- Million cubic feet -----												
National forest	1,619.9	41.9	246.3	14.4	206.2	1,111.2	1,518.4	40.8	246.1	13.4	185.9	1,032.3
Other public	277.8	0.0	26.3	8.9	71.4	171.2	244.1	0.0	25.1	7.5	59.6	151.9
Forest industry	212.1	55.3	61.7	0.7	9.2	85.2	199.8	53.7	61.0	0.2	7.4	77.5
Other private	4,645.5	77.2	493.4	195.5	638.0	3,241.4	3,915.9	72.4	482.6	162.2	529.4	2,669.2
All ownerships	6,755.2	174.4	827.6	219.5	924.8	4,608.9	5,878.3	166.9	814.8	183.3	782.2	3,931.0

*Numbers in columns and rows may not add to totals due to rounding.

†Hardwood species with an average specific gravity of 0.50 or less such as gums, yellow-poplar, cottonwoods, red maple, basswoods, aspens, and willows.

‡Hardwood species with an average specific gravity greater than 0.50 such as oaks, hard maples, hickories, and green and white ash.

Table 18.—Average net annual growth of growing stock and sawtimber on timberland by county and species group, Ozark counties, Arkansas, 1988–1995*

County	Growing stock						Sawtimber					
	Softwood			Hardwood			Softwood			Hardwood		
	All species	Pine			Soft [†]	Hard [‡]	All species	Pine			Soft [†]	Hard [‡]
		Planted	Natural	Other				Planted	Natural	Other		
----- Million cubic feet -----												
Baxter	3.2	0.4	0.4	0.3	0.3	1.8	9.0	3.3	1.8	0.4	0.5	3.0
Benton	5.3	0.0	0.3	0.0	0.3	4.7	20.8	0.0	1.6	0.0	1.3	18.0
Boone	2.8	0.0	0.0	0.2	-0.2	2.9	9.0	0.0	0.0	0.0	0.2	8.8
Carroll	1.6	0.0	0.6	0.0	0.1	0.9	6.6	0.0	2.9	0.1	0.3	3.3
Cleburne	6.7	1.2	2.9	0.1	0.4	2.1	24.5	2.9	14.4	0.6	0.5	6.0
Conway	6.5	0.4	3.5	0.5	0.2	2.0	22.5	1.9	13.6	1.9	1.1	3.9
Crawford	1.1	0.7	-0.1	0.0	-0.2	0.7	6.5	2.0	-1.7	-0.2	-1.0	7.4
Faulkner	4.4	0.8	0.2	0.2	0.5	2.7	10.8	1.7	0.7	0.5	2.9	5.0
Franklin	11.1	0.5	2.9	0.4	2.2	5.1	39.5	3.1	12.0	1.5	4.2	18.7
Fulton	4.3	0.7	0.4	0.2	0.3	2.7	17.0	8.1	0.2	0.5	0.9	7.4
Independence	9.4	0.3	2.8	0.6	0.8	4.9	31.7	0.0	12.6	0.6	0.8	17.6
Izard	4.8	0.0	2.6	0.2	0.3	1.8	16.4	0.0	11.1	0.6	0.4	4.3
Johnson	15.1	0.8	4.3	0.3	2.3	7.4	50.6	3.1	18.1	0.2	6.3	22.9
Madison	9.1	0.0	0.6	0.3	1.1	7.0	29.4	0.0	2.5	1.0	3.9	21.9
Marion	2.6	0.0	0.0	0.3	0.3	1.9	1.0	0.0	0.2	0.3	-0.2	0.8
Newton	14.9	0.0	1.6	0.1	1.4	11.9	54.5	0.0	7.3	0.4	3.6	43.1
Pope	15.8	0.8	4.3	0.6	1.4	8.8	54.7	0.1	22.7	1.0	2.1	28.9
Randolph	4.1	0.0	0.0	0.2	0.7	3.2	9.9	0.0	0.0	0.9	2.4	6.7
Searcy	7.0	0.0	1.3	0.3	0.7	4.7	24.9	0.0	6.5	0.4	3.3	14.7
Sharp	3.4	0.1	0.5	0.4	0.0	2.4	10.3	1.1	1.6	0.6	0.4	6.7
Stone	11.5	0.1	2.6	0.4	1.1	7.4	30.2	0.2	7.8	1.6	3.1	17.5
Van Buren	15.8	2.5	4.4	0.4	1.1	7.5	36.0	2.5	15.7	1.4	2.5	13.9
Washington	6.5	0.2	0.4	0.6	0.7	4.5	23.3	0.6	2.4	1.9	1.7	16.7
White	9.2	0.0	0.9	0.8	2.3	5.2	26.1	0.0	5.1	2.9	4.3	13.8
All counties	176.3	9.4	37.6	7.4	18.0	103.9	565.3	30.5	159.1	19.1	45.5	311.1

*Numbers in columns and rows may not add to totals due to rounding.

[†]Hardwood species with an average specific gravity of 0.50 or less such as gums, yellow-poplar, cottonwoods, red maple, basswoods, aspens, and willows.

[‡]Hardwood species with an average specific gravity greater than 0.50 such as oaks, hard maples, hickories, and green and white ash.

[§]International 1/4-inch Rule.

Table 19.—Average annual removals of growing stock and sawtimber on timberland by county and species group, Ozark counties, Arkansas, 1988–1995*

County	Growing stock						Sawtimber					
	Softwood				Hardwood		Softwood				Hardwood	
	All species	Pine			Soft [†]	Hard [‡]	All species	Pine			Soft [†]	Hard [‡]
		Planted	Natural	Other				Planted	Natural	Other		
----- Million cubic feet -----						----- Million board feet [§] -----						
Baxter	3.3	0.7	0.1	0.1	0.1	2.4	15.1	2.5	0.7	0.0	0.6	11.3
Benton	1.0	0.0	0.0	0.0	0.0	1.0	3.6	0.0	0.0	0.2	0.0	3.4
Boone	1.3	0.0	0.0	0.1	0.0	1.1	4.8	0.0	0.0	0.1	0.0	4.7
Carroll	2.5	0.0	0.6	0.1	0.1	1.7	10.6	0.0	3.1	0.0	0.0	7.5
Cleburne	4.2	0.0	2.1	0.1	0.8	1.3	12.5	0.0	7.7	0.4	2.1	2.4
Conway	2.6	0.0	1.5	0.0	0.9	0.2	11.7	0.0	6.2	0.0	4.2	1.3
Crawford	1.8	0.3	0.7	0.2	0.1	0.4	5.3	0.0	4.3	0.1	0.0	0.9
Faulkner	2.5	0.9	0.1	0.0	0.0	1.4	6.3	1.4	0.3	0.0	0.0	4.7
Franklin	3.0	0.2	2.2	0.1	0.1	0.5	11.9	0.8	9.2	0.0	0.3	1.5
Fulton	1.3	0.0	0.0	0.0	0.0	1.3	4.2	0.0	0.0	0.0	0.0	4.2
Independence	5.7	0.0	0.3	0.2	0.7	4.6	24.2	0.0	1.3	0.4	2.8	19.7
Izard	5.6	0.0	2.2	0.2	0.5	2.7	25.1	0.0	10.7	0.8	2.0	11.6
Johnson	7.0	2.4	3.2	0.0	0.1	1.2	33.8	13.8	15.3	0.0	0.5	4.1
Madison	4.1	0.0	0.3	0.0	0.6	3.2	15.0	0.0	1.6	0.0	2.9	10.6
Marion	2.7	0.0	0.5	0.3	0.0	1.9	8.5	0.0	2.1	0.2	0.1	6.1
Newton	6.4	0.0	0.9	0.1	0.4	5.1	24.8	0.0	3.5	0.2	1.7	19.5
Pope	5.4	0.4	3.4	0.4	0.3	0.9	16.0	1.0	12.4	0.8	0.6	1.1
Randolph	2.1	0.0	0.0	0.1	0.6	1.5	8.8	0.0	0.0	0.1	2.4	6.4
Searcy	2.6	0.0	0.0	0.0	0.1	2.5	9.6	0.0	0.2	0.0	0.6	8.9
Sharp	2.2	0.0	0.0	0.3	0.0	1.8	7.8	0.0	0.0	0.2	0.2	7.4
Stone	4.5	0.0	2.4	0.1	0.4	1.6	18.5	0.0	10.6	0.4	1.8	5.6
Van Buren	5.2	0.0	2.8	0.3	0.1	2.0	18.4	0.0	11.3	0.8	0.2	6.2
Washington	2.3	0.0	0.0	0.0	0.3	1.9	6.5	0.0	0.0	0.0	1.5	5.0
White	4.0	0.0	0.9	0.1	1.6	1.3	15.5	0.0	2.6	0.5	7.8	4.4
All counties	83.2	4.9	24.1	2.8	7.8	43.5	318.6	19.6	103.1	5.2	32.3	158.5

*Numbers in columns and rows may not add to totals due to rounding.

[†]Hardwood species with an average specific gravity of 0.50 or less such as gums, yellow-poplar, cottonwoods, red maple, basswoods, aspens, and willows.[‡]Hardwood species with an average specific gravity greater than 0.50 such as oaks, hard maples, hickories, and green and white ash.[§]International 1/4-inch Rule.

Table 20.—Average net annual growth and average annual removals of growing stock on timberland by species, Ozark counties, Arkansas, 1988–1995*

Species	Growth	Removals
	----- Million cubic feet -----	
Yellow pines	47.1	29.0
Other softwoods	7.4	2.8
Total softwoods	54.5	31.9
Select white–red oaks	53.4	13.7
Other white–red oaks	33.9	22.7
Hickories	13.2	6.2
Hard maples	1.3	0.4
Sweetgum	5.4	2.2
Ashes–walnut–black cherry	4.5	1.9
Yellow–poplar	0.0	0.0
Other hardwoods	10.1	4.2
Total hardwoods	121.9	51.3
All species	176.3	83.2

*Numbers in columns may not add to totals due to rounding.

Table 21.—Average net annual growth and average annual removals of sawtimber on timberland by species, Ozark counties, Arkansas, 1988–1995*

Species	Growth	Removals
	----- Million board feet† -----	
Yellow pines	189.6	122.6
Other softwoods	19.1	5.2
Total softwoods	208.7	127.8
Select white–red oaks	182.8	54.1
Other white–red oaks	90.3	82.7
Hickories	30.5	18.3
Hard maples	3.4	1.6
Sweetgum	9.8	9.7
Ashes–walnut–black cherry	11.8	8.5
Yellow–poplar	0.3	0.0
Other hardwoods	27.8	15.9
Total hardwoods	356.7	190.8
All species	565.3	318.6

*Numbers in columns may not add to totals due to rounding.

†International 1/4-inch Rule.

Table 22.—Average annual mortality of growing stock and sawtimber on timberland by species, Ozark counties, Arkansas, 1988–1995*

Species	Growing stock	Sawtimber
	Million cubic feet	Million board feet†
Yellow pines	2.8	5.9
Other softwoods	0.5	0.8
Total softwoods	3.3	6.8
Select white–red oaks	5.5	15.0
Other white–red oaks	8.5	21.2
Hickories	3.2	8.8
Hard maples	0.3	1.4
Sweetgum	1.6	6.5
Ashes–walnut–black cherry	0.9	2.5
Other hardwoods	4.7	9.4
Total hardwoods	24.6	64.7
All species	27.9	71.5

*Numbers in columns may not add to totals due to rounding.

†International 1/4-inch Rule.

Table 23.—Average net annual growth and average annual removals of growing stock on timberland by ownership class and species group, Ozark counties, Arkansas, 1988–1995*

Ownership class	Growth						Removals					
	Softwood				Hardwood		Softwood				Hardwood	
	All species	Pine			Soft [†]	Hard [‡]	All species	Pine			Soft [†]	Hard [‡]
		Planted	Natural	Other				Planted	Natural	Other		
----- <i>Million cubic feet</i> -----												
National forest	39.7	1.9	9.1	0.4	4.0	24.3	13.2	3.0	5.7	0.3	0.5	3.8
Other public	6.6	0.4	0.2	0.3	1.2	4.4	1.5	0.7	0.0	0.1	0.5	0.2
Forest industry	11.1	3.8	4.3	0.0	0.2	2.8	1.1	0.0	0.7	0.0	0.0	0.4
Other private	118.9	3.2	24.0	6.7	12.6	72.4	67.4	1.3	17.8	2.5	6.8	39.1
All ownerships	176.3	9.4	37.6	7.4	18.0	103.9	83.2	4.9	24.1	2.8	7.8	43.5

*Numbers in columns and rows may not add to totals due to rounding.

[†]Hardwood species with an average specific gravity of 0.50 or less such as gums, yellow-poplar, cottonwoods, red maple, basswoods, aspens, and willows.

[‡]Hardwood species with an average specific gravity greater than 0.50 such as oaks, hard maples, hickories, and green and white ash.

Table 24.—Average net annual growth and average annual removals of sawtimber on timberland by ownership class and species group, Ozark counties, Arkansas, 1988–1995*

Ownership class	Growth						Removals					
	Softwood				Hardwood		Softwood				Hardwood	
	All species	Pine			Soft [†]	Hard [‡]	All species	Pine			Soft [†]	Hard [‡]
		Planted	Natural	Other				Planted	Natural	Other		
----- Million board feet [§] -----												
National forest	148.1	8.2	39.5	1.7	8.9	89.7	58.7	14.7	29.2	0.8	2.0	12.0
Other public	21.2	3.3	1.1	0.5	4.1	12.3	6.6	2.5	0.0	0.5	2.4	1.1
Forest industry	26.7	4.7	17.7	0.0	0.4	3.9	3.4	0.0	3.0	0.0	0.0	0.4
Other private	369.4	14.3	100.8	16.8	32.2	205.2	249.9	2.4	70.9	3.9	27.9	144.9
All ownerships	565.3	30.5	159.1	19.1	45.5	311.1	318.6	19.6	103.1	5.2	32.3	158.5

*Numbers in columns and rows may not add to totals due to rounding.

[†]Hardwood species with an average specific gravity of 0.50 or less such as gums, yellow-poplar, cottonwoods, red maple, basswoods, aspens, and willows.

[‡]Hardwood species with an average specific gravity greater than 0.50 such as oaks, hard maples, hickories, and green and white ash.

[§]International 1/4-inch Rule.

Table 25.—Volume of sawtimber on timberland by species and tree grade, Ozark counties, Arkansas, 1995*

Species	All grades	Grade 1	Grade 2	Grade 3	Grade 4	Grade 5
----- Million board feet [†] -----						
Yellow pines	3,633.3	1,104.8	857.8	1,629.8	0.0	40.9
Cypress	41.6	0.0	17.7	15.8	0.0	8.0
Redcedars	320.3	309.8	0.0	0.0	0.0	10.5
Total softwoods	3,995.1	1,414.6	875.5	1,645.7	0.0	59.4
Select white-red oaks	4,810.9	861.8	1,133.3	2,136.7	406.2	272.9
Other white-red oaks	4,064.5	535.9	931.9	1,823.6	504.5	268.6
Hickories	1,202.9	103.9	232.4	621.1	183.3	62.2
Hard maples	122.0	3.7	12.0	61.8	27.1	17.5
Sweetgum	644.0	117.4	234.5	200.2	44.4	47.3
Tupelos and blackgums	581.3	179.7	112.7	220.0	13.1	55.8
Ashes-walnut-black cherry	363.7	112.4	73.8	124.5	7.2	45.7
Yellow-poplar	6.6	0.0	0.0	3.1	0.0	3.4
Other hardwoods	835.5	211.3	152.3	326.2	75.7	70.1
Total hardwoods	12,631.3	2,126.1	2,882.8	5,517.2	1,261.6	843.5
All species	16,626.4	3,540.7	3,758.3	7,162.9	1,261.6	902.9

*Numbers in columns and rows may not add to totals due to rounding.

[†]International 1/4-inch Rule.

Supplemental Tables 26 through 44

Table 26.—Area of timberland by stand age, forest type group, and stand origin, Ozark counties, Arkansas, 1995*

Stand age class	Pine		Oak-pine		Other hardwood types	
	Planted	Natural	Planted	Natural	Planted	Natural
<i>Years</i>	<i>----- Thousand acres -----</i>					
1-10	39.4	0.0	0.0	6.2	0.0	45.0
11-20	59.1	6.2	6.9	0.0	0.0	19.3
21-30	0.0	8.2	5.3	0.0	0.0	0.0
31-40	19.3	12.2	6.7	0.0	0.0	11.3
41-50	6.2	6.0	0.0	0.0	0.0	0.0
>50	10.8	6.0	0.0	0.0	0.0	0.0
Mixed	38.0	405.9	18.9	906.1	19.1	4,348.0
Total	172.8	444.5	37.7	912.3	19.1	4,423.5

*Numbers in columns may not add to totals due to rounding.

Table 27.—Volume of softwood growing stock on timberland by county and forest type group, Ozark counties, Arkansas, 1995*

County	Total	Forest type group					
		Loblolly-shortleaf pine		Oak-pine	Oak-hickory	Oak-gum-cypress	Elm-ash-cottonwood
		Planted	Natural				
----- Million cubic feet -----							
Baxter	36.7	0.0	11.4	22.6	2.8	0.0	0.0
Benton	5.7	0.0	0.0	1.2	4.5	0.0	0.0
Boone	4.2	0.0	1.6	1.0	1.6	0.0	0.0
Carroll	12.8	0.0	0.0	3.5	9.3	0.0	0.0
Cleburne	104.0	25.9	31.6	36.3	10.2	0.0	0.0
Conway	71.0	0.0	43.2	18.6	9.2	0.0	0.0
Crawford	45.1	6.2	13.4	18.9	6.6	0.0	0.0
Faulkner	14.0	5.6	0.0	5.4	3.0	0.0	0.0
Franklin	60.9	0.0	35.1	22.5	3.3	0.0	0.0
Fulton	36.9	29.7	4.2	1.3	1.7	0.0	0.0
Independence	66.2	2.6	34.6	23.9	4.4	0.6	0.0
Izard	65.5	0.3	39.9	18.9	6.5	0.0	0.0
Johnson	105.6	26.7	36.4	29.7	12.8	0.0	0.0
Madison	19.3	0.0	3.4	9.5	6.4	0.0	0.0
Marion	15.6	0.0	4.8	3.7	7.0	0.0	0.0
Newton	56.6	0.0	33.9	12.7	10.0	0.0	0.0
Pope	146.5	4.1	93.7	37.6	11.1	0.0	0.0
Randolph	4.0	0.0	1.2	0.3	1.7	0.8	0.0
Searcy	37.4	0.0	13.9	14.1	9.3	0.0	0.0
Sharp	21.0	0.0	3.4	14.1	3.4	0.0	0.0
Stone	63.2	5.7	11.5	34.8	11.2	0.0	0.0
Van Buren	114.7	28.9	33.7	36.2	15.8	0.0	0.0
Washington	23.1	0.0	15.8	4.3	2.8	0.0	0.1
White	35.4	2.5	10.9	8.3	5.8	7.8	0.0
All counties	1,165.1	138.3	477.7	379.3	160.4	9.2	0.1

*Numbers in columns and rows may not add to totals due to rounding.

Table 28.—Volume of hardwood growing stock on timberland by county and forest type group, Ozark counties, Arkansas, 1995*

		Forest type group					
County	Total	Loblolly-shortleaf pine		Oak- pine	Oak- hickory	Oak-gum- cypress	Elm-ash- cottonwood
		Planted	Natural				
----- Million cubic feet -----							
Baxter	146.0	0.0	5.2	25.6	115.2	0.0	0.0
Benton	222.5	0.0	0.0	0.9	217.6	0.0	4.0
Boone	111.2	0.0	1.2	0.5	109.4	0.0	0.0
Carroll	116.3	0.0	0.0	1.9	114.1	0.3	0.0
Cleburne	114.3	2.9	6.2	33.7	67.9	3.7	0.0
Conway	82.0	0.0	2.9	15.4	44.2	9.4	10.0
Crawford	206.1	0.9	0.0	18.9	182.7	3.6	0.0
Faulkner	108.3	0.4	0.0	7.3	74.9	25.8	0.0
Franklin	233.3	0.0	3.4	22.4	203.9	3.6	0.0
Fulton	102.0	2.1	1.0	8.1	90.8	0.0	0.0
Independence	143.4	0.0	4.9	34.7	92.7	11.1	0.0
Izard	92.5	0.0	10.7	20.5	61.3	0.0	0.0
Johnsont	316.7	4.0	4.9	30.8	277.0	0.0	0.0
Madison	338.1	0.0	0.0	7.5	330.6	0.0	0.0
Marion	124.8	0.0	2.7	6.6	115.5	0.0	0.0
Newton	444.4	0.0	10.3	11.2	422.9	0.0	0.0
Pope	340.3	0.5	23.4	34.8	277.8	3.9	0.0
Randolph	123.5	0.0	1.1	3.9	83.9	34.6	0.0
Searcy	241.5	0.0	3.4	17.6	211.2	9.3	0.0
Sharp	107.4	0.0	0.9	10.6	95.9	0.0	0.0
Stone	278.4	0.0	1.5	35.1	241.8	0.0	0.0
Van Buren	265.1	0.2	8.3	42.2	214.4	0.0	0.0
Washington	204.3	0.0	2.4	3.1	195.2	2.8	0.7
White	250.8	0.0	4.3	6.5	93.7	111.0	35.3
All counties	4,713.2	11.0	98.8	400.0	3,934.5	219.0	49.9

*Numbers in columns and rows may not add to totals due to rounding.

Table 29.—*Volume of softwood growing stock in the sawlog portion of sawtimber trees on timberland by county and forest type group, Ozark counties, Arkansas, 1995**

County	Total	Forest type group				
		Loblolly–shortleaf pine		Oak– pine	Oak– hickory	Oak–gum– cypress
		Planted	Natural			
		----- Million cubic feet -----				
Baxter	22.2	0.0	7.7	13.1	1.3	0.0
Benton	4.6	0.0	0.0	0.6	3.9	0.0
Boone	0.7	0.0	0.0	0.0	0.7	0.0
Carroll	8.2	0.0	0.0	1.6	6.7	0.0
Cleburne	66.9	13.6	22.7	23.2	7.4	0.0
Conway	43.2	0.0	24.2	13.4	5.6	0.0
Crawford	26.8	3.8	11.6	9.7	1.7	0.0
Faulkner	5.3	1.5	0.0	2.2	1.6	0.0
Franklin	37.7	0.0	19.3	17.1	1.3	0.0
Fulton	22.6	21.0	0.7	0.6	0.3	0.0
Independence	33.3	0.0	19.7	10.3	3.0	0.3
Izard	30.3	0.0	18.3	8.7	3.2	0.0
Johnson	62.6	15.6	18.8	20.1	8.1	0.0
Madison	13.6	0.0	1.6	6.6	5.5	0.0
Marion	5.4	0.0	1.6	0.3	3.5	0.0
Newton	36.2	0.0	24.3	4.8	7.1	0.0
Pope	93.0	0.0	64.3	23.1	5.6	0.0
Randolph	2.5	0.0	0.4	0.0	1.3	0.8
Searcy	24.0	0.0	10.9	7.2	5.9	0.0
Sharp	8.2	0.0	0.6	5.4	2.2	0.0
Stone	31.9	1.0	3.2	20.8	6.9	0.0
Van Buren	52.7	4.8	17.7	20.8	9.4	0.0
Washington	13.8	0.0	10.7	1.9	1.2	0.0
White	22.9	0.0	7.6	5.8	3.0	6.5
All counties	668.3	61.2	285.9	217.1	96.5	7.5

*Numbers in columns and rows may not add to totals due to rounding.

Table 30.—Volume of hardwood growing stock in the sawlog portion of sawtimber trees on timberland by county and forest type group, Ozark counties, Arkansas, 1995*

County	Total	Forest type group					
		Loblolly–shortleaf pine		Oak– pine	Oak– hickory	Oak–gum– cypress	Elm–ash– cottonwood
		Planted	Natural				
				----- Million cubic feet -----			
Baxter	64.7	0.0	3.7	7.1	53.9	0.0	0.0
Benton	119.4	0.0	0.0	0.6	116.5	0.0	2.3
Boone	55.2	0.0	0.6	0.2	54.4	0.0	0.0
Carroll	56.8	0.0	0.0	0.0	56.5	0.3	0.0
Cleburne	36.3	0.7	2.8	8.8	22.9	1.1	0.0
Conway	33.2	0.0	1.3	2.3	19.0	5.0	5.7
Crawford	116.4	0.0	0.0	8.6	107.4	0.3	0.0
Faulkner	45.9	0.0	0.0	1.5	29.3	15.1	0.0
Franklin	115.1	0.0	1.7	8.2	102.9	2.3	0.0
Fulton	38.4	1.0	0.8	4.3	32.3	0.0	0.0
Independence	62.7	0.0	1.3	11.9	42.0	7.6	0.0
Izard	29.2	0.0	3.2	6.7	19.2	0.0	0.0
Johnson	152.3	1.0	0.5	9.9	141.0	0.0	0.0
Madison	161.5	0.0	0.0	2.3	159.2	0.0	0.0
Marion	55.1	0.0	1.2	1.7	52.2	0.0	0.0
Newton	202.2	0.0	6.6	4.6	190.9	0.0	0.0
Pope	159.7	0.0	6.3	14.2	138.9	0.3	0.0
Randolph	59.3	0.0	0.5	1.6	34.9	22.3	0.0
Searcy	100.8	0.0	1.4	3.4	90.9	5.1	0.0
Sharp	34.5	0.0	0.4	2.8	31.2	0.0	0.0
Stone	108.9	0.0	0.2	14.4	94.3	0.0	0.0
Van Buren	88.6	0.0	2.3	15.2	71.1	0.0	0.0
Washington	86.0	0.0	1.1	0.8	82.8	1.4	0.0
White	137.3	0.0	0.5	1.3	36.0	70.8	28.7
All counties	2,119.7	2.8	36.5	132.4	1,779.8	131.6	36.7

*Numbers in columns and rows may not add to totals due to rounding.

Table 31.—Volume of timber on timberland by county, class of timber, and species group, Ozark counties, Arkansas, 1995*

County	All classes	Growing stock		Rough		Rotten	
		Softwood	Hardwood	Softwood	Hardwood	Softwood	Hardwood
		----- Million cubic feet -----					
Baxter	221.5	36.7	146.0	1.8	29.8	0.0	7.2
Benton	271.8	5.7	222.5	0.0	38.9	0.0	4.7
Boone	144.7	4.2	111.2	1.3	24.8	0.0	3.3
Carroll	186.1	12.8	116.3	3.4	48.2	0.0	5.4
Cleburne	245.2	104.0	114.3	3.7	20.4	0.0	2.8
Conway	172.8	71.0	82.0	2.1	16.2	0.0	1.6
Crawford	276.1	45.1	206.1	2.1	20.6	0.0	2.1
Faulkner	150.5	14.0	108.3	1.2	24.5	0.0	2.5
Franklin	331.5	60.9	233.3	1.9	30.9	0.0	4.5
Fulton	174.5	36.9	102.0	3.1	30.0	0.0	2.5
Independence	237.1	66.2	143.4	4.0	21.7	0.0	1.8
Izard	199.1	65.5	92.5	8.2	30.9	0.0	2.0
Johnson	457.3	105.6	316.7	2.4	25.8	0.0	6.7
Madison	412.6	19.3	338.1	0.4	50.2	0.0	4.6
Marion	176.7	15.6	124.8	1.6	31.2	0.0	3.6
Newton	535.5	56.6	444.4	1.0	28.4	0.0	5.2
Pope	512.9	146.5	340.3	1.4	19.3	0.0	5.5
Randolph	159.3	4.0	123.5	1.0	27.3	0.0	3.5
Searcy	324.1	37.4	241.5	1.6	36.6	0.2	6.8
Sharp	160.6	21.0	107.4	3.1	25.4	0.0	3.7
Stone	391.5	63.2	278.4	1.8	39.5	0.0	8.6
Van Buren	412.0	114.7	265.1	3.6	23.4	0.0	5.2
Washington	273.3	23.1	204.3	1.8	41.3	0.0	2.9
White	328.5	35.4	250.8	3.5	34.4	0.3	4.1
All counties	6,755.2	1,165.1	4,713.2	56.0	719.7	0.5	100.8

*Numbers in columns and rows may not add to totals due to rounding.

Table 32.—Number of live trees on timberland by detailed species and diameter class, Ozark counties, Arkansas, 1995*

Species	All classes	Diameter class (inches at breast height)											
		1.0– 2.9	3.0– 4.9	5.0– 6.9	7.0– 8.9	9.0– 10.9	11.0– 12.9	13.0– 14.9	15.0– 16.9	17.0– 18.9	19.0– 20.9	21.0– 28.9	≥29.0
-----Thousand trees-----													
Shortleaf pine	214,449	74,470	51,064	29,474	24,724	16,189	9,217	5,379	2,370	1,006	356	200	0
Loblolly pine	55,612	8,095	20,877	16,855	6,773	2,006	714	237	17	32	0	6	0
Redcedars	334,988	214,103	69,502	25,423	16,015	6,072	2,168	1,218	324	137	11	14	0
Cypress	324	0	4	118	0	0	29	64	0	28	36	33	12
Total softwoods	605,372	296,667	141,447	71,871	47,512	24,267	12,128	6,898	2,711	1,202	403	253	12
Select white oaks	323,461	119,703	62,449	52,483	34,522	23,444	13,343	7,949	4,184	2,406	1,499	1,404	74
Select red oaks	95,806	33,150	13,218	11,672	10,671	8,401	6,821	4,814	2,991	1,733	1,180	1,055	100
Other white oaks	260,117	93,665	69,934	34,998	24,746	15,771	8,870	5,686	3,100	1,567	813	938	27
Other red oaks	282,630	128,315	54,724	31,279	20,392	17,724	11,261	7,619	4,665	2,637	2,001	1,810	202
Sweet pecan	1,124	616	0	133	142	119	55	21	38	0	0	0	0
Water hickory	151	0	0	0	0	43	31	0	17	14	12	34	0
Other hickories	580,323	330,532	123,603	62,340	32,673	15,956	8,725	3,765	1,499	727	270	226	7
Persimmon	57,482	49,261	4,753	2,542	508	328	68	23	0	0	0	0	0
Hard maples	61,498	37,173	13,304	4,440	2,852	1,851	962	440	218	133	97	29	0
Soft maples	123,488	91,890	19,450	7,344	2,821	981	372	231	153	115	46	84	0
Boxelder	5,057	2,806	484	658	273	401	122	115	78	49	34	35	0
Beech	12,349	8,916	1,150	946	328	135	220	176	49	131	135	162	0
Sweetgum	70,420	36,310	9,120	8,770	7,206	3,973	1,994	1,202	944	452	191	239	18
Blackgum	164,818	115,955	26,060	9,158	5,282	2,794	1,903	1,072	1,166	712	279	410	26
Other gums/tupelos	1,769	3	0	513	459	232	242	88	82	41	53	54	3
White ash	56,576	35,359	10,847	4,201	2,217	1,653	1,082	525	330	145	102	92	23
Other ashes	16,912	10,904	3,320	830	754	361	152	158	210	63	83	63	13
Sycamore	7,593	3,091	1,161	1,112	501	730	399	264	142	71	48	74	0
Cottonwoods	215	0	0	0	0	0	0	0	0	25	34	107	49
Basswoods	2,934	2,131	6	270	58	95	118	132	52	36	19	18	0
Yellow-poplar	29	0	0	0	0	0	0	0	18	0	11	0	0
Magnolias	427	0	0	150	65	35	86	44	16	0	31	0	0
Willow	693	0	3	74	0	223	129	84	72	0	67	40	0
Black walnut	9,263	1,157	3,872	1,040	1,233	1,099	353	208	117	79	63	40	0
Black cherry	41,726	25,864	9,535	3,467	1,386	882	263	81	123	47	41	37	0
American elm	25,919	17,216	2,783	3,331	1,199	561	338	170	173	45	22	82	0
Other elms	305,664	236,791	49,153	12,796	4,133	1,715	570	236	146	37	20	66	0
River birch	927	619	11	0	63	38	57	45	38	29	12	9	5
Hackberries	30,847	20,316	7,463	624	858	702	506	223	44	64	32	14	0
Black locust	9,315	4,067	1,119	1,983	996	349	477	108	160	49	0	6	0
Other locusts	4,824	1,172	1,880	609	408	349	237	91	31	26	10	12	0
Sassafras	82,067	69,407	10,303	1,642	416	110	153	22	14	0	0	0	0
Dogwood	404,218	340,964	57,139	5,759	219	138	0	0	0	0	0	0	0
Holly	978	978	0	0	0	0	0	0	0	0	0	0	0
Other commercial	19,044	11,618	5,142	1,092	689	338	60	68	17	0	11	8	0
Total hardwoods	3,060,662	1,829,949	561,986	266,256	158,071	101,532	59,969	35,662	20,890	11,432	7,215	7,151	548
Noncommercial	300,720	233,139	44,769	11,151	6,017	2,479	1,613	655	553	211	93	41	0
All species	3,966,754	2,359,755	748,202	349,277	211,600	128,278	73,710	43,216	24,154	12,845	7,712	7,445	560

*Numbers in columns and rows may not add to totals due to rounding.

Table 33.—Number of growing-stock trees on timberland by detailed species and diameter class, Ozark counties, Arkansas, 1995*

Species	All classes	Diameter class (inches at breast height)									
		5.0– 6.9	7.0– 8.9	9.0– 10.9	11.0– 12.9	13.0– 14.9	15.0– 16.9	17.0– 18.9	19.0– 20.9	21.0– 28.9	≥29.0
		----- Thousand trees -----									
Shortleaf pine	84,754	26,654	24,330	15,423	9,187	5,360	2,276	991	356	177	0
Loblolly pine	25,171	16,174	6,091	1,928	687	237	17	32	0	6	0
Redcedars	40,783	20,679	13,122	4,020	1,653	950	249	99	11	0	0
Cypress	304	118	0	0	29	64	0	28	25	33	7
Total softwoods	151,013	63,625	43,542	21,371	11,557	6,610	2,542	1,150	392	216	7
Select white oaks	122,513	45,193	31,925	20,807	10,974	6,563	3,287	1,831	1,055	854	25
Select red oaks	41,101	10,177	9,378	6,910	5,482	3,681	2,343	1,313	965	794	58
Other white oaks	74,268	27,539	21,593	12,798	5,778	3,604	1,535	661	436	316	9
Other red oaks	87,296	27,214	18,644	16,510	9,340	6,629	3,687	2,214	1,584	1,348	126
Sweet pecan	483	133	142	119	29	21	38	0	0	0	0
Water hickory	134	0	0	43	31	0	0	14	12	34	0
Other hickories	101,784	49,065	27,397	13,579	6,664	2,958	1,194	555	228	137	7
Persimmon	2,660	1,985	294	328	31	23	0	0	0	0	0
Hard maples	7,928	3,451	2,008	1,344	540	207	192	107	50	29	0
Soft maples	7,679	4,896	1,630	527	229	136	98	79	22	62	0
Boxelder	730	232	118	170	33	66	66	17	10	18	0
Beech	1,674	854	202	135	132	66	49	68	82	86	0
Sweetgum	21,536	6,937	6,579	3,604	1,669	1,077	865	402	168	217	18
Blackgum	17,811	7,420	4,001	2,425	1,333	795	848	559	145	270	15
Other gums/tupelos	1,119	218	303	145	145	88	82	41	53	45	0
White ash	7,433	3,114	1,437	1,246	783	359	252	105	83	31	23
Other ashes	1,723	588	412	254	88	91	141	25	63	57	4
Sycamore	2,630	919	314	545	281	246	142	71	38	74	0
Cottonwoods	215	0	0	0	0	0	0	25	34	107	49
Basswoods	776	270	58	95	118	132	52	25	9	18	0
Yellow–poplar	29	0	0	0	0	0	18	0	11	0	0
Magnolias	344	150	65	0	57	25	16	0	31	0	0
Willow	546	74	0	97	129	84	54	0	67	40	0
Black walnut	2,812	474	898	724	330	173	101	48	52	13	0
Black cherry	3,822	1,676	967	723	180	81	88	47	23	37	0
American elm	3,407	1,869	658	355	208	113	121	32	22	28	0
Other elms	13,158	8,271	2,852	1,198	491	167	100	24	20	35	0
River birch	231	0	63	0	30	45	38	29	12	9	5
Hackberries	2,135	349	563	540	414	176	13	51	21	8	0
Black locust	1,429	638	398	138	159	30	54	13	0	0	0
Other locusts	1,198	361	335	209	154	71	31	26	0	12	0
Sassafras	1,059	690	195	40	120	0	14	0	0	0	0
Dogwood	930	930	0	0	0	0	0	0	0	0	0
Other commercial	451	146	182	97	0	0	17	0	0	8	0
Total hardwoods	533,043	205,833	133,610	85,704	45,953	27,706	15,535	8,378	5,297	4,688	340
All species	684,056	269,458	177,152	107,075	57,509	34,316	18,077	9,528	5,689	4,904	347

*Numbers in columns and rows may not add to totals due to rounding.

Table 34.—Volume of live trees on timberland by detailed species and diameter class, Ozark counties, Arkansas, 1995*

Species	All classes	Diameter class (inches at breast height)									
		5.0– 6.9	7.0– 8.9	9.0– 10.9	11.0– 12.9	13.0– 14.9	15.0– 16.9	17.0– 18.9	19.0– 20.9	21.0– 28.9	≥29.0
----- Million cubic feet -----											
Shortleaf pine	902.8	69.3	150.7	186.8	171.9	147.4	87.3	51.8	23.5	14.1	0.0
Loblolly pine	99.3	26.9	29.0	20.2	12.5	7.5	0.8	1.6	0.0	0.7	0.0
Redcedars	210.2	47.9	66.0	44.0	23.7	18.4	6.1	3.2	0.4	0.5	0.0
Cypress	9.3	0.3	0.0	0.0	0.5	1.7	0.0	1.5	1.9	1.8	1.7
Total softwoods	1,221.5	144.4	245.7	251.0	208.6	175.0	94.2	58.1	25.7	17.0	1.7
Select white oaks	1,290.8	133.5	205.0	244.5	215.1	170.6	111.0	81.4	61.5	64.3	3.9
Select red oaks	639.4	29.2	59.6	81.0	101.8	100.1	82.4	61.0	53.5	62.8	7.9
Other white oaks	637.7	70.3	112.0	122.2	99.8	85.0	57.1	35.7	23.5	30.2	1.8
Other red oaks	1,056.1	64.3	101.4	160.2	157.9	153.6	121.1	93.0	85.0	102.3	17.2
Sweet pecan	5.6	0.2	1.0	1.7	0.9	0.7	1.2	0.0	0.0	0.0	0.0
Water hickory	5.6	0.0	0.0	0.5	0.6	0.0	0.4	0.5	0.7	2.9	0.0
Other hickories	695.6	116.8	146.6	137.8	123.1	75.6	42.3	25.9	12.9	13.2	1.4
Persimmon	11.5	4.9	2.2	3.2	0.7	0.4	0.0	0.0	0.0	0.0	0.0
Hard maples	75.2	8.9	14.8	16.7	12.3	7.2	5.7	4.6	3.3	1.7	0.0
Soft maples	59.2	15.0	13.5	8.2	4.2	4.8	3.5	3.6	1.6	4.9	0.0
Boxelder	13.8	0.7	1.2	3.0	1.2	1.7	2.2	1.4	1.3	1.1	0.0
Beech	28.2	1.8	1.4	1.1	3.0	2.5	1.5	4.4	5.5	6.9	0.0
Sweetgum	244.9	18.3	40.1	42.3	34.2	29.8	32.4	18.7	9.8	17.3	2.1
Blackgum	193.8	19.6	24.1	24.3	23.8	19.1	27.0	23.7	9.3	20.6	2.4
Other gums/tupelos	20.6	1.0	2.3	1.8	3.8	1.8	2.3	1.5	2.6	3.4	0.1
White ash	80.8	9.1	10.4	13.9	14.2	9.7	8.0	4.3	4.8	3.8	2.6
Other ashes	27.4	1.7	4.0	3.3	1.7	2.5	4.9	1.4	3.1	3.9	0.7
Sycamore	40.1	2.9	1.8	7.9	6.7	6.0	4.3	2.7	2.2	5.6	0.0
Cottonwoods	24.0	0.0	0.0	0.0	0.0	0.0	0.0	1.4	2.3	9.9	10.4
Basswoods	14.8	0.5	0.3	1.1	2.3	3.4	2.2	1.5	0.9	2.6	0.0
Yellow-poplar	1.2	0.0	0.0	0.0	0.0	0.0	0.6	0.0	0.6	0.0	0.0
Magnolias	6.0	0.3	0.4	0.1	1.4	1.2	0.7	0.0	1.9	0.0	0.0
Willow	9.9	0.2	0.0	1.3	1.9	1.3	1.2	0.0	2.3	1.7	0.0
Black walnut	32.3	1.9	5.3	7.8	4.6	4.2	3.3	2.0	2.2	1.1	0.0
Black cherry	37.6	8.0	6.9	8.5	3.5	1.7	3.5	1.8	1.2	2.4	0.0
American elm	33.6	6.5	5.5	4.7	4.5	2.7	4.8	1.4	0.6	2.8	0.0
Other elms	76.8	24.3	17.8	13.5	8.0	4.8	3.6	1.4	1.0	2.4	0.0
River birch	5.5	0.0	0.3	0.2	0.8	0.9	1.1	1.0	0.5	0.4	0.3
Hackberries	27.8	1.3	3.7	6.0	6.9	4.3	1.1	2.5	1.2	0.9	0.0
Black locust	18.7	3.5	3.9	2.3	4.3	1.3	2.3	1.0	0.0	0.1	0.0
Other locusts	12.9	0.9	2.1	2.7	2.8	1.9	0.9	0.7	0.2	0.6	0.0
Sassafras	7.1	2.8	1.5	0.6	1.6	0.3	0.3	0.0	0.0	0.0	0.0
Dogwood	7.0	6.1	0.3	0.6	0.0	0.0	0.0	0.0	0.0	0.0	0.0
Other commercial	6.7	1.2	2.2	1.7	0.4	0.5	0.4	0.0	0.1	0.2	0.0
Total hardwoods	5,448.1	555.6	792.1	924.6	848.2	699.5	533.2	378.4	295.7	370.0	50.8
Noncommercial	85.6	15.9	19.2	13.1	13.5	7.5	8.9	3.3	2.8	1.4	0.0
All species	6,755.2	715.9	1,056.9	1,188.8	1,070.3	882.0	636.3	439.8	324.3	388.4	52.4

*Numbers in columns and rows may not add to totals due to rounding.

Table 35.—Volume of growing stock on timberland by detailed species and diameter class, Ozark counties, Arkansas, 1995*

Species	All classes	Diameter class (inches at breast height)									
		5.0– 6.9	7.0– 8.9	9.0– 10.9	11.0– 12.9	13.0– 14.9	15.0– 16.9	17.0– 18.9	19.0– 20.9	21.0– 28.9	≥29.0
----- Million cubic feet -----											
Shortleaf pine	887.6	63.9	149.0	182.2	171.4	147.2	85.9	51.5	23.5	13.0	0.0
Loblolly pine	94.1	25.8	25.6	19.9	12.3	7.5	0.8	1.6	0.0	0.7	0.0
Redcedars	174.7	41.4	57.0	33.2	19.5	15.3	5.3	2.7	0.4	0.0	0.0
Cypress	8.6	0.3	0.0	0.0	0.5	1.7	0.0	1.5	1.5	1.8	1.4
Total softwoods	1,165.1	131.4	231.5	235.3	203.7	171.7	92.0	57.3	25.3	15.4	1.4
Select white oaks	1,155.3	120.8	195.5	227.5	189.7	151.9	97.2	70.8	51.1	49.2	1.7
Select red oaks	566.6	27.0	54.7	72.3	89.4	85.1	72.8	53.0	49.8	55.8	6.8
Other white oaks	493.9	59.1	100.6	107.1	73.4	64.3	36.0	19.8	16.9	15.5	1.2
Other red oaks	958.0	58.8	96.4	153.2	140.2	141.8	105.8	84.8	74.6	88.6	13.8
Sweet pecan	5.3	0.2	1.0	1.7	0.6	0.7	1.2	0.0	0.0	0.0	0.0
Water hickory	5.2	0.0	0.0	0.5	0.6	0.0	0.0	0.5	0.7	2.9	0.0
Other hickories	605.6	98.0	130.7	123.3	104.3	65.3	37.0	23.2	11.7	10.7	1.4
Persimmon	10.1	4.3	1.7	3.2	0.5	0.4	0.0	0.0	0.0	0.0	0.0
Hard maples	58.6	7.5	11.7	13.3	8.2	4.3	5.5	4.1	2.4	1.7	0.0
Soft maples	43.4	11.2	9.9	5.3	3.0	3.3	2.7	2.7	1.2	4.2	0.0
Boxelder	8.6	0.5	0.9	1.6	0.3	1.2	1.8	0.6	0.7	1.0	0.0
Beech	20.9	1.6	1.1	1.1	2.1	1.4	1.5	3.4	4.3	4.5	0.0
Sweetgum	226.6	15.2	38.2	39.6	30.0	27.9	30.6	17.2	9.7	16.2	2.1
Blackgum	166.4	16.5	20.1	22.9	19.4	16.2	23.6	21.5	7.1	17.6	1.5
Other gums/tupelos	17.3	0.5	1.8	1.1	2.6	1.8	2.3	1.5	2.6	3.2	0.0
White ash	64.9	7.2	7.4	11.5	11.5	7.2	7.0	3.8	4.5	2.2	2.6
Other ashes	21.9	1.3	2.8	2.7	1.3	2.0	3.8	1.0	2.8	3.8	0.3
Sycamore	35.4	2.4	1.0	6.5	5.2	5.7	4.3	2.7	2.0	5.6	0.0
Cottonwoods	24.0	0.0	0.0	0.0	0.0	0.0	0.0	1.4	2.3	9.9	10.4
Basswoods	14.5	0.5	0.3	1.1	2.3	3.4	2.2	1.3	0.8	2.6	0.0
Yellow–poplar	1.2	0.0	0.0	0.0	0.0	0.0	0.6	0.0	0.6	0.0	0.0
Magnolias	5.1	0.3	0.4	0.0	1.1	0.6	0.7	0.0	1.9	0.0	0.0
Willow	9.0	0.2	0.0	0.5	1.9	1.3	1.0	0.0	2.3	1.7	0.0
Black walnut	27.2	1.1	4.3	6.6	4.4	3.8	3.1	1.6	1.9	0.4	0.0
Black cherry	29.6	4.5	5.7	7.2	2.6	1.7	2.9	1.8	0.7	2.4	0.0
American elm	23.8	4.1	3.4	3.6	3.3	2.1	3.8	1.1	0.6	1.7	0.0
Other elms	58.1	16.8	13.9	9.8	7.5	3.9	2.8	0.9	1.0	1.6	0.0
River birch	4.9	0.0	0.3	0.0	0.4	0.9	1.1	1.0	0.5	0.4	0.3
Hackberries	22.4	1.0	3.0	4.8	6.1	3.5	0.4	2.2	0.8	0.5	0.0
Black locust	9.9	1.8	2.4	1.0	2.4	0.6	1.3	0.4	0.0	0.0	0.0
Other locusts	10.4	0.4	1.8	2.1	2.1	1.7	0.9	0.7	0.0	0.6	0.0
Sassafras	5.3	1.8	1.0	0.6	1.6	0.0	0.3	0.0	0.0	0.0	0.0
Dogwood	1.6	1.6	0.0	0.0	0.0	0.0	0.0	0.0	0.0	0.0	0.0
Other commercial	2.3	0.3	0.8	0.6	0.0	0.0	0.4	0.0	0.0	0.2	0.0
Total hardwoods	4,713.2	466.3	712.9	832.2	717.8	604.3	454.4	323.0	255.4	304.7	42.1
All species	5,878.3	597.7	944.4	1,067.5	921.5	776.0	546.4	380.4	280.7	320.1	43.5

*Numbers in columns and rows may not add to totals due to rounding.

Table 36.—*Volume of growing stock in the sawlog portion of sawtimber trees on timberland by detailed species and diameter class, Ozark counties, Arkansas, 1995**

Species	All classes	Diameter class (inches at breast height)							
		9.0– 10.9	11.0– 12.9	13.0– 14.9	15.0– 16.9	17.0– 18.9	19.0– 20.9	21.0– 28.9	≥29.0
		----- Million cubic feet -----							
Shortleaf pine	562.1	148.8	145.5	122.8	71.5	43.5	19.9	10.2	0.0
Loblolly pine	34.8	15.4	10.3	6.5	0.7	1.4	0.0	0.4	0.0
Redcedars	64.2	26.5	16.4	13.7	4.7	2.4	0.3	0.0	0.0
Cypress	7.2	0.0	0.4	1.5	0.0	1.3	1.4	1.5	1.2
Total softwoods	668.3	190.7	172.6	144.5	77.0	48.6	21.7	12.0	1.2
Select white oaks	468.3	0.0	138.5	117.7	75.5	56.2	40.9	38.1	1.4
Select red oaks	328.6	0.0	66.1	67.9	59.0	43.9	41.3	44.8	5.6
Other white oaks	175.6	0.0	55.4	50.1	28.6	15.3	12.8	12.3	1.1
Other red oaks	512.7	0.0	104.3	113.5	84.4	67.2	59.8	72.0	11.5
Sweet pecan	1.9	0.0	0.4	0.6	0.9	0.0	0.0	0.0	0.0
Water hickory	3.7	0.0	0.3	0.0	0.0	0.4	0.6	2.4	0.0
Other hickories	195.8	0.0	77.4	51.4	29.6	18.0	9.5	8.6	1.4
Persimmon	0.7	0.0	0.3	0.4	0.0	0.0	0.0	0.0	0.0
Hard maples	20.5	0.0	6.0	3.3	4.6	3.1	2.0	1.5	0.0
Soft maples	14.0	0.0	2.0	2.8	2.2	2.4	0.8	3.8	0.0
Boxelder	4.4	0.0	0.2	0.8	1.5	0.5	0.6	0.8	0.0
Beech	12.4	0.0	1.3	0.9	1.0	2.5	3.3	3.4	0.0
Sweetgum	108.2	0.0	21.4	22.8	26.0	14.9	8.0	13.4	1.8
Blackgum	88.2	0.0	13.7	12.6	20.5	18.6	6.0	15.5	1.3
Other gums/tupelos	11.0	0.0	1.5	1.3	1.8	1.3	2.3	2.8	0.0
White ash	30.1	0.0	8.2	5.5	5.4	2.8	3.9	2.0	2.2
Other ashes	12.2	0.0	0.9	1.6	3.1	0.8	2.3	3.2	0.3
Sycamore	20.3	0.0	3.2	4.7	3.6	2.3	1.5	4.9	0.0
Cottonwoods	22.4	0.0	0.0	0.0	0.0	1.2	2.1	8.9	10.1
Basswoods	10.1	0.0	1.6	2.7	1.9	1.0	0.7	2.2	0.0
Yellow–poplar	1.1	0.0	0.0	0.0	0.5	0.0	0.6	0.0	0.0
Magnolias	3.4	0.0	0.8	0.4	0.5	0.0	1.6	0.0	0.0
Willow	6.4	0.0	1.4	1.0	0.8	0.0	1.7	1.4	0.0
Black walnut	11.6	0.0	3.1	2.9	2.4	1.3	1.5	0.4	0.0
Black cherry	9.4	0.0	1.7	1.2	2.6	1.5	0.7	1.7	0.0
American elm	9.6	0.0	2.3	1.6	2.9	0.8	0.5	1.4	0.0
Other elms	13.2	0.0	5.4	2.8	2.2	0.7	0.9	1.4	0.0
River birch	3.6	0.0	0.3	0.7	0.8	0.8	0.3	0.4	0.3
Hackberries	10.4	0.0	4.3	2.9	0.4	1.7	0.7	0.4	0.0
Black locust	3.5	0.0	1.7	0.5	1.0	0.3	0.0	0.0	0.0
Other locusts	4.6	0.0	1.4	1.4	0.7	0.6	0.0	0.5	0.0
Sassafras	1.5	0.0	1.2	0.0	0.3	0.0	0.0	0.0	0.0
Other commercial	0.4	0.0	0.0	0.0	0.3	0.0	0.0	0.1	0.0
Total hardwoods	2,119.7	0.0	526.4	475.9	365.1	260.3	206.7	248.3	37.0
All species	2,788.0	190.7	699.0	620.4	442.1	308.9	228.4	260.3	38.2

*Numbers in columns and rows may not add to totals due to rounding.

Table 37.—*Volume of live trees on timberland by detailed species and class of timber, Ozark counties, Arkansas, 1995**

Species	All live	Growing stock	Rough	Rotten
----- Million cubic feet -----				
Shortleaf pine	902.8	887.6	15.1	0.0
Loblolly pine	99.3	94.1	5.2	0.0
Redcedars	210.2	174.7	35.3	0.2
Cypress	9.3	8.6	0.4	0.3
Total softwoods	1,221.5	1,165.1	56.0	0.5
Select white oaks	1,290.8	1,155.3	123.4	12.1
Select red oaks	639.4	566.6	60.5	12.2
Other white oaks	637.7	493.9	125.7	18.1
Other red oaks	1,056.1	958.0	80.7	17.4
Sweet pecan	5.6	5.3	0.3	0.0
Water hickory	5.6	5.2	0.4	0.0
Other hickories	695.6	605.6	82.1	7.9
Persimmon	11.5	10.1	1.2	0.2
Hard maples	75.2	58.6	14.9	1.7
Soft maples	59.2	43.4	14.4	1.5
Boxelder	13.8	8.6	4.6	0.6
Beech	28.2	20.9	5.2	2.0
Sweetgum	244.9	226.6	14.4	3.8
Blackgum	193.8	166.4	14.8	12.7
Other gums/tupelos	20.6	17.3	3.1	0.3
White ash	80.8	64.9	13.9	2.0
Other ashes	27.4	21.9	4.5	1.0
Sycamore	40.1	35.4	4.3	0.5
Cottonwoods	24.0	24.0	0.0	0.0
Basswoods	14.8	14.5	0.2	0.1
Yellow-poplar	1.2	1.2	0.0	0.0
Magnolias	6.0	5.1	0.9	0.1
Willow	9.9	9.0	0.9	0.0
Black walnut	32.3	27.2	4.9	0.2
Black cherry	37.6	29.6	6.9	1.1
American elm	33.6	23.8	9.2	0.5
Other elms	76.8	58.1	18.4	0.3
River birch	5.5	4.9	0.6	0.0
Hackberries	27.8	22.4	4.9	0.5
Black locust	18.7	9.9	6.1	2.7
Other locusts	12.9	10.4	2.2	0.3
Sassafras	7.1	5.3	1.5	0.3
Dogwood	7.0	1.6	5.0	0.4
Other commercial	6.7	2.3	4.0	0.4
Total hardwoods	5,448.1	4,713.2	634.1	100.8
Noncommercial	85.6	0.0	85.6	0.0
All species	6,755.2	5,878.3	775.7	101.3

*Numbers in columns and rows may not add to totals due to rounding.

Table 38.—Volume of sawtimber for tree grade 1 on timberland by detailed species and diameter class, Ozark counties, Arkansas, 1995*

Species	All classes	Diameter class (inches at breast height)							
		9.0– 10.9	11.0– 12.9	13.0– 14.9	15.0– 16.9	17.0– 18.9	19.0– 20.9	21.0– 28.9	≥29.0
----- Million board feet [†] -----									
Shortleaf pine	1,096.2	140.4	270.1	283.5	180.7	125.8	81.4	14.3	0.0
Loblolly pine	8.6	0.0	0.0	4.3	4.2	0.0	0.0	0.0	0.0
Redcedars	309.8	127.2	80.1	64.3	23.7	12.6	1.9	0.0	0.0
Total softwoods	1,414.6	267.6	350.2	352.1	208.7	138.4	83.3	14.3	0.0
Select white oaks	382.3	0.0	0.0	0.0	55.9	127.2	126.9	72.3	0.0
Select red oaks	479.5	0.0	0.0	0.0	73.1	120.9	143.6	125.7	16.3
Other white oaks	68.5	0.0	0.0	0.0	20.3	13.8	17.6	16.8	0.0
Other red oaks	467.4	0.0	0.0	0.0	61.3	132.8	97.6	139.4	36.4
Sweet pecan	3.1	0.0	0.0	0.0	3.1	0.0	0.0	0.0	0.0
Water hickory	2.4	0.0	0.0	0.0	0.0	2.4	0.0	0.0	0.0
Other hickories	98.5	0.0	0.0	0.0	18.0	29.5	27.1	23.9	0.0
Hard maples	3.7	0.0	0.0	0.0	3.7	0.0	0.0	0.0	0.0
Soft maples	5.8	0.0	0.0	0.0	0.0	3.0	0.0	2.8	0.0
Beech	15.9	0.0	0.0	0.0	0.0	8.1	5.7	2.1	0.0
Sweetgum	117.4	0.0	0.0	0.0	26.9	38.9	16.7	34.9	0.0
Blackgum	151.3	0.0	0.0	0.0	27.9	62.3	20.2	34.2	6.7
Other gums/tupelos	28.4	0.0	0.0	0.0	7.6	6.9	8.0	6.0	0.0
White ash	57.5	0.0	0.0	0.0	10.1	10.3	22.7	6.8	7.6
Other ashes	28.9	0.0	0.0	0.0	9.1	2.0	10.2	7.5	0.0
Sycamore	23.1	0.0	0.0	0.0	3.7	2.5	3.1	13.8	0.0
Cottonwoods	103.4	0.0	0.0	0.0	0.0	8.7	12.6	28.1	54.0
Basswoods	32.3	0.0	0.0	0.0	4.0	6.8	4.8	16.8	0.0
Magnolias	14.2	0.0	0.0	0.0	3.4	0.0	10.8	0.0	0.0
Black walnut	12.0	0.0	0.0	0.0	0.0	7.2	4.8	0.0	0.0
Black cherry	14.0	0.0	0.0	0.0	3.5	8.0	2.5	0.0	0.0
Other elms	8.2	0.0	0.0	0.0	6.1	2.1	0.0	0.0	0.0
Hackberries	5.7	0.0	0.0	0.0	0.0	5.7	0.0	0.0	0.0
Other locusts	2.6	0.0	0.0	0.0	0.0	2.6	0.0	0.0	0.0
Total hardwoods	2,126.1	0.0	0.0	0.0	337.5	601.6	534.9	531.2	120.9
All species	3,540.7	267.6	350.2	352.1	546.2	740.0	618.2	545.5	120.9

*Numbers in columns and rows may not add to totals due to rounding.

[†]International 1/4-inch Rule.

Table 39.—Volume of sawtimber for tree grade 2 on timberland by detailed species and diameter class, Ozark counties, Arkansas, 1995*

Species	Diameter class (inches at breast height)								
	All classes	9.0–10.9	11.0–12.9	13.0–14.9	15.0–16.9	17.0–18.9	19.0–20.9	21.0–28.9	≥29.0
	----- Million board feet† -----								
Shortleaf pine	857.8	185.3	203.0	238.7	121.2	50.9	30.5	28.3	0.0
Cypress	17.7	0.0	0.0	0.0	0.0	4.3	3.7	4.2	5.5
Total softwoods	875.5	185.3	203.0	238.7	121.2	55.2	34.2	32.5	5.5
Select white oaks	641.6	0.0	0.0	270.5	178.5	84.3	53.3	54.9	0.0
Select red oaks	491.7	0.0	0.0	200.9	137.5	51.3	32.6	56.8	12.5
Other white oaks	178.1	0.0	0.0	47.3	41.3	28.2	27.6	30.5	3.2
Other red oaks	753.8	0.0	0.0	214.5	204.5	103.6	92.2	121.1	17.8
Sweet pecan	2.5	0.0	0.0	0.0	2.5	0.0	0.0	0.0	0.0
Water hickory	7.4	0.0	0.0	0.0	0.0	0.0	0.0	7.4	0.0
Other hickories	222.5	0.0	0.0	101.7	61.3	40.5	7.8	11.2	0.0
Persimmon	2.1	0.0	0.0	2.1	0.0	0.0	0.0	0.0	0.0
Hard maples	12.0	0.0	0.0	0.0	5.3	6.6	0.0	0.0	0.0
Soft maples	16.0	0.0	0.0	2.4	4.7	0.0	0.0	8.8	0.0
Boxelder	5.4	0.0	0.0	0.0	0.0	0.0	3.8	1.5	0.0
Beech	4.2	0.0	0.0	2.3	0.0	0.0	0.0	1.9	0.0
Sweetgum	234.5	0.0	0.0	78.2	85.5	25.3	23.6	14.2	7.7
Blackgum	104.6	0.0	0.0	25.6	41.7	16.3	2.6	18.4	0.0
Other gums/tupelos	8.1	0.0	0.0	4.4	1.2	0.0	2.5	0.0	0.0
White ash	37.6	0.0	0.0	22.7	11.3	3.6	0.0	0.0	0.0
Other ashes	7.4	0.0	0.0	7.4	0.0	0.0	0.0	0.0	0.0
Sycamore	47.0	0.0	0.0	14.9	13.5	7.0	3.9	7.7	0.0
Cottonwoods	9.3	0.0	0.0	0.0	0.0	0.0	0.0	9.3	0.0
Basswoods	14.2	0.0	0.0	5.6	8.5	0.0	0.0	0.0	0.0
Magnolias	2.7	0.0	0.0	2.7	0.0	0.0	0.0	0.0	0.0
Willow	2.9	0.0	0.0	0.0	0.0	0.0	2.9	0.0	0.0
Black walnut	16.2	0.0	0.0	5.3	9.5	1.5	0.0	0.0	0.0
Black cherry	12.5	0.0	0.0	3.9	8.6	0.0	0.0	0.0	0.0
American elm	18.2	0.0	0.0	5.2	9.4	1.7	1.9	0.0	0.0
Other elms	7.6	0.0	0.0	0.0	0.0	0.0	4.1	3.5	0.0
River birch	8.1	0.0	0.0	4.4	0.0	3.7	0.0	0.0	0.0
Hackberries	7.8	0.0	0.0	4.7	0.0	3.1	0.0	0.0	0.0
Black locust	1.5	0.0	0.0	1.5	0.0	0.0	0.0	0.0	0.0
Other locusts	4.2	0.0	0.0	0.0	1.4	0.0	0.0	2.8	0.0
Sassafras	1.2	0.0	0.0	0.0	1.2	0.0	0.0	0.0	0.0
Total hardwoods	2,882.8	0.0	0.0	1,028.2	827.5	376.8	259.0	350.2	41.2
All species	3,758.3	185.3	203.0	1,266.9	948.7	432.0	293.2	382.6	46.7

*Numbers in columns and rows may not add to totals due to rounding.

†International 1/4-inch Rule.

Table 40.—Volume of sawtimber for tree grade 3 on timberland by detailed species and diameter class, Ozark counties, Arkansas, 1995*

Species	All classes	Diameter class (inches at breast height)							
		9.0– 10.9	11.0– 12.9	13.0– 14.9	15.0– 16.9	17.0– 18.9	19.0– 20.9	21.0– 28.9	≥29.0
----- Million board feet† -----									
Shortleaf pine	1,443.5	467.1	379.1	258.6	167.4	117.4	23.5	30.3	0.0
Loblolly pine	186.3	76.0	59.6	38.7	0.0	9.3	0.0	2.8	0.0
Cypress	15.8	0.0	2.1	6.1	0.0	3.5	4.2	0.0	0.0
Total softwoods	1,645.7	543.0	440.8	303.4	167.4	130.2	27.8	33.1	0.0
Select white oaks	1,349.6	0.0	641.8	317.7	148.9	111.2	68.2	58.7	3.2
Select red oaks	787.1	0.0	317.9	147.1	96.2	64.9	69.4	87.9	3.7
Other white oaks	519.4	0.0	211.2	162.3	67.5	33.9	26.0	15.0	3.5
Other red oaks	1,304.2	0.0	398.1	317.6	179.1	127.2	150.1	127.9	4.2
Sweet pecan	6.1	0.0	2.6	3.5	0.0	0.0	0.0	0.0	0.0
Water hickory	14.0	0.0	1.4	0.0	0.0	0.0	3.4	9.2	0.0
Other hickories	601.0	0.0	330.6	136.1	65.9	27.4	15.5	17.4	8.2
Persimmon	1.6	0.0	1.6	0.0	0.0	0.0	0.0	0.0	0.0
Hard maples	61.8	0.0	24.0	7.4	12.9	10.0	0.0	7.5	0.0
Soft maples	30.0	0.0	5.4	8.9	5.2	6.0	2.0	2.4	0.0
Boxelder	6.8	0.0	1.1	3.0	0.0	2.7	0.0	0.0	0.0
Beech	36.2	0.0	4.1	3.0	4.2	1.7	8.7	14.4	0.0
Sweetgum	200.2	0.0	96.9	32.1	24.3	15.6	10.5	20.7	0.0
Blackgum	198.8	0.0	58.3	35.0	34.2	27.3	13.8	30.2	0.0
Other gums/tupelos	21.2	0.0	7.6	1.8	0.0	0.0	1.8	10.0	0.0
White ash	60.8	0.0	41.4	7.1	8.9	2.1	1.4	0.0	0.0
Other ashes	19.1	0.0	4.6	0.0	5.3	2.3	2.8	4.1	0.0
Sycamore	42.5	0.0	17.4	10.1	4.0	0.0	2.1	8.8	0.0
Cottonwoods	17.7	0.0	0.0	0.0	0.0	0.0	0.0	17.7	0.0
Basswoods	17.4	0.0	9.4	7.9	0.0	0.0	0.0	0.0	0.0
Yellow–poplar	3.1	0.0	0.0	0.0	3.1	0.0	0.0	0.0	0.0
Magnolias	2.4	0.0	2.4	0.0	0.0	0.0	0.0	0.0	0.0
Willow	17.6	0.0	2.1	3.0	2.1	0.0	6.6	3.9	0.0
Black walnut	30.8	0.0	13.1	12.4	5.2	0.0	0.0	0.0	0.0
Black cherry	13.8	0.0	8.8	0.0	0.0	0.0	0.0	5.1	0.0
American elm	25.8	0.0	10.0	3.3	8.7	3.8	0.0	0.0	0.0
Other elms	51.5	0.0	26.9	14.9	7.6	0.0	0.0	2.1	0.0
River birch	8.9	0.0	0.0	0.0	4.8	0.0	2.0	2.1	0.0
Hackberries	40.4	0.0	23.0	9.8	2.5	0.0	2.7	2.3	0.0
Black locust	10.0	0.0	3.4	1.3	3.2	2.1	0.0	0.0	0.0
Other locusts	9.9	0.0	5.5	2.1	2.3	0.0	0.0	0.0	0.0
Sassafras	5.6	0.0	5.6	0.0	0.0	0.0	0.0	0.0	0.0
Other commercial	1.9	0.0	0.0	0.0	1.9	0.0	0.0	0.0	0.0
Total hardwoods	5,517.2	0.0	2,276.4	1,247.4	698.2	438.0	386.9	447.5	22.8
All species	7,162.9	543.0	2,717.2	1,550.7	865.6	568.2	414.7	480.6	22.8

*Numbers in columns and rows may not add to totals due to rounding.

†International 1/4-inch Rule.

Table 41.—Volume of sawtimber for tree grade 4 on timberland by detailed species and diameter class, Ozark counties, Arkansas, 1995*

Species	All classes	Diameter class (<i>inches at breast height</i>)							
		9.0– 10.9	11.0– 12.9	13.0– 14.9	15.0– 16.9	17.0– 18.9	19.0– 20.9	21.0– 28.9	≥29.0
----- <i>Million board feet</i> [†] -----									
Select white oaks	273.4	0.0	112.8	62.4	48.2	24.6	8.3	17.1	0.0
Select red oaks	132.9	0.0	38.2	35.2	35.5	13.8	2.9	7.3	0.0
Other white oaks	188.2	0.0	77.3	58.5	33.9	10.8	1.7	6.0	0.0
Other red oaks	316.3	0.0	147.4	87.6	29.9	35.2	5.4	10.8	0.0
Other hickories	183.3	0.0	93.9	50.1	25.8	11.5	2.1	0.0	0.0
Hard maples	27.1	0.0	7.0	5.0	4.1	0.0	11.0	0.0	0.0
Soft maples	12.8	0.0	5.9	2.3	1.8	0.0	2.8	0.0	0.0
Boxelder	8.9	0.0	0.0	0.0	5.6	0.0	0.0	3.3	0.0
Beech	19.9	0.0	3.2	0.0	2.1	6.7	4.6	3.3	0.0
Sweetgum	44.4	0.0	17.8	11.4	6.1	4.7	0.0	4.5	0.0
Blackgum	13.1	0.0	8.2	4.9	0.0	0.0	0.0	0.0	0.0
White ash	2.9	0.0	2.9	0.0	0.0	0.0	0.0	0.0	0.0
Magnolias	2.6	0.0	2.6	0.0	0.0	0.0	0.0	0.0	0.0
Willow	9.4	0.0	4.4	1.2	1.4	0.0	0.0	2.4	0.0
Black walnut	4.3	0.0	3.0	0.0	0.0	0.0	1.3	0.0	0.0
American elm	6.6	0.0	2.4	0.0	0.0	0.0	0.0	4.2	0.0
Other elms	5.4	0.0	3.7	1.7	0.0	0.0	0.0	0.0	0.0
River birch	1.6	0.0	1.6	0.0	0.0	0.0	0.0	0.0	0.0
Black locust	2.8	0.0	2.8	0.0	0.0	0.0	0.0	0.0	0.0
Other locusts	5.6	0.0	0.0	5.6	0.0	0.0	0.0	0.0	0.0
Total hardwoods	1,261.6	0.0	535.1	325.9	194.5	107.3	40.0	58.8	0.0
All species	1,261.6	0.0	535.1	325.9	194.5	107.3	40.0	58.8	0.0

*Numbers in columns and rows may not add to totals due to rounding.

†International 1/4-inch Rule.

Table 42.—Volume of sawtimber on timberland by species and ownership class, Ozark counties, Arkansas, 1995*

Species	All ownerships	National forest	Other public	Forest industry	Forest industry-leased	Other private
----- Million board feet [†] -----						
Yellow pines	3,633.3	1,274.8	112.8	315.7	0.0	1,929.9
Cypress	41.6	0.0	25.7	0.0	0.0	15.9
Redcedars	320.3	28.7	2.8	0.0	0.0	288.8
Total softwoods	3,995.1	1,303.6	141.3	315.7	0.0	2,234.6
Select white-red oaks	4,810.9	1,872.1	116.9	94.8	0.0	2,727.1
Other white-red oaks	4,064.5	878.6	298.2	27.3	0.0	2,860.3
Hickories	1,202.9	358.1	53.0	6.2	0.0	785.6
Hard maples	122.0	52.2	0.0	0.0	0.0	69.7
Sweetgum	644.0	198.0	25.5	1.6	0.0	418.9
Tupelos and blackgums	581.3	273.6	65.6	5.0	0.0	237.1
Ashes-walnut-black cherry	363.7	96.1	42.3	8.1	0.0	217.1
Yellow-poplar	6.6	0.0	0.0	0.0	0.0	6.6
Other hardwoods	835.5	169.3	91.3	0.0	0.0	575.0
Total hardwoods	12,631.3	3,898.1	692.7	143.2	0.0	7,897.3
All species	16,626.4	5,201.6	834.0	458.9	0.0	10,131.9

*Numbers in columns and rows may not add to totals due to rounding.

†International 1/4-inch Rule.

Table 43.—Average net annual growth, average annual removals, and average annual mortality of live trees by county and species group, Ozark counties, Arkansas, 1988–1995*

County	Net growth			Removals			Mortality		
	All species	Softwood	Hardwood	All species	Softwood	Hardwood	All species	Softwood	Hardwood
----- Million cubic feet -----									
Baxter	5.1	1.2	3.9	3.7	0.9	2.9	1.8	0.1	1.8
Benton	7.2	0.3	6.9	1.3	0.0	1.3	1.6	0.0	1.6
Boone	3.9	0.2	3.7	1.4	0.1	1.3	1.0	0.0	1.0
Carroll	4.1	0.7	3.4	3.2	0.8	2.4	1.1	0.0	1.1
Cleburne	8.8	4.6	4.2	4.5	2.2	2.3	1.5	0.4	1.0
Conway	7.4	4.4	3.0	2.7	1.6	1.1	0.9	0.0	0.9
Crawford	1.0	0.6	0.4	1.8	1.2	0.6	1.4	0.2	1.1
Faulkner	5.8	1.2	4.6	2.9	1.0	1.9	1.8	0.1	1.7
Franklin	11.9	3.9	7.9	3.2	2.5	0.8	1.5	0.0	1.5
Fulton	5.9	1.5	4.4	1.4	0.0	1.4	1.1	0.3	0.8
Independence	10.2	4.1	6.1	6.1	0.5	5.6	1.3	0.2	1.0
Izard	6.7	3.0	3.7	5.9	2.4	3.6	1.2	0.2	1.0
Johnson	15.8	5.6	10.3	7.1	5.7	1.4	2.0	0.2	1.9
Madison	11.0	0.9	10.1	4.7	0.3	4.4	2.2	0.0	2.2
Marion	3.8	0.5	3.3	3.1	0.8	2.3	1.6	0.1	1.5
Newton	12.0	1.8	10.3	6.9	1.0	5.9	3.4	0.3	3.1
Pope	16.1	5.7	10.4	5.6	4.2	1.4	3.0	1.0	2.0
Randolph	5.1	0.2	4.9	2.5	0.1	2.5	0.5	0.0	0.5
Searcy	8.3	1.7	6.5	2.8	0.0	2.7	2.0	0.0	2.0
Sharp	3.8	1.3	2.5	2.6	0.3	2.3	0.8	0.0	0.8
Stone	14.3	3.2	11.1	4.8	2.6	2.2	1.5	0.1	1.4
Van Buren	16.4	7.5	8.9	5.7	3.2	2.4	2.0	0.3	1.7
Washington	6.8	1.3	5.4	3.1	0.0	3.1	1.6	0.0	1.6
White	12.0	1.8	10.3	4.0	1.0	3.0	2.3	0.0	2.3
All counties	203.5	57.2	146.3	91.0	32.4	58.6	39.2	3.6	35.6

*Numbers in columns and rows may not add to totals due to rounding.

Table 44.—Average net annual growth, average annual removals, and average annual mortality of live trees by ownership class and species group, Ozark counties, Arkansas, 1988–1995*

Ownership class	Net growth			Removals			Mortality		
	All species	Softwood	Hardwood	All species	Softwood	Hardwood	All species	Softwood	Hardwood
----- Million cubic feet -----									
National forest	40.0	11.6	28.4	13.4	8.9	4.5	8.2	0.7	7.5
Other public	8.0	1.1	6.9	1.5	0.8	0.7	2.0	0.0	2.0
Forest industry	12.0	8.4	3.6	1.1	0.7	0.4	0.7	0.3	0.4
Other private	143.5	36.1	107.4	75.0	22.1	52.9	28.3	2.5	25.7
All ownerships	203.5	57.2	146.3	91.0	32.4	58.6	39.2	3.6	35.6

*Numbers in columns and rows may not add to totals due to rounding.

Figures 1 through 8

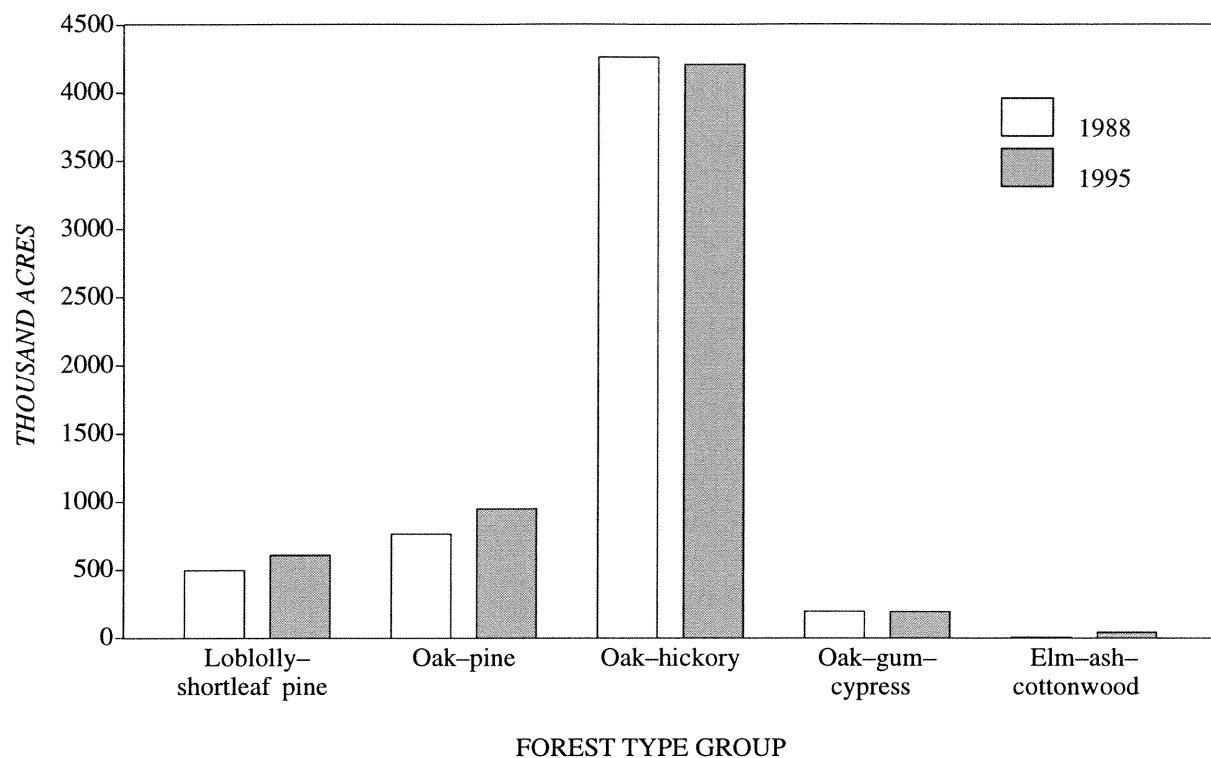


Figure 1.—Area of timberland by forest type group, Ozark counties, Arkansas, 1988 and 1995.

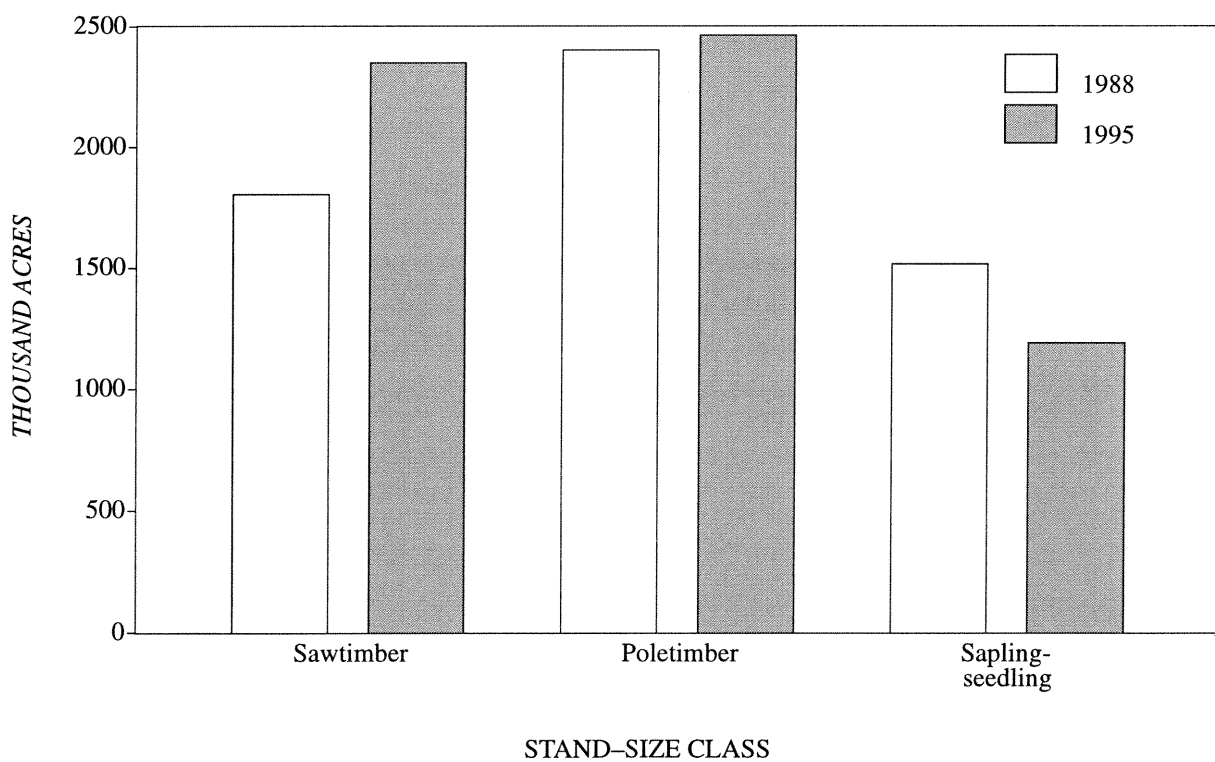


Figure 2.—Area of timberland by stand-size class, Ozark counties, Arkansas, 1988 and 1995.

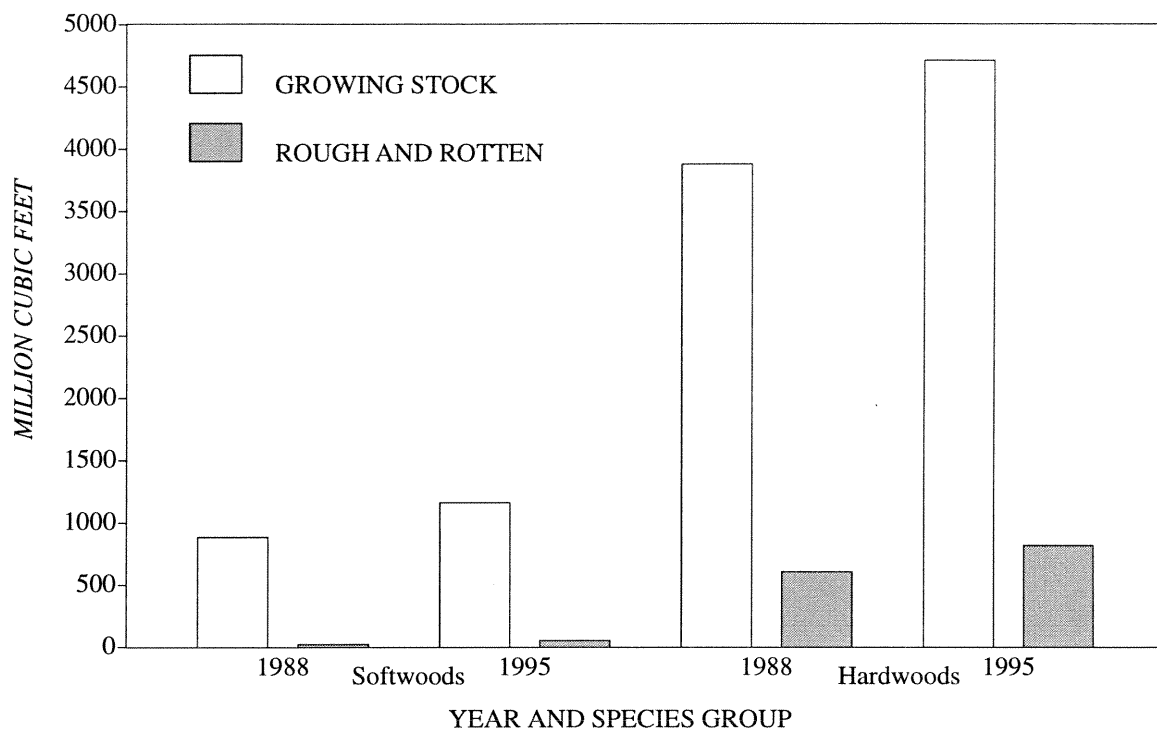


Figure 3.—Volume of live trees on timberland by species group and class of timber, Ozark counties, Arkansas, 1988 and 1995.

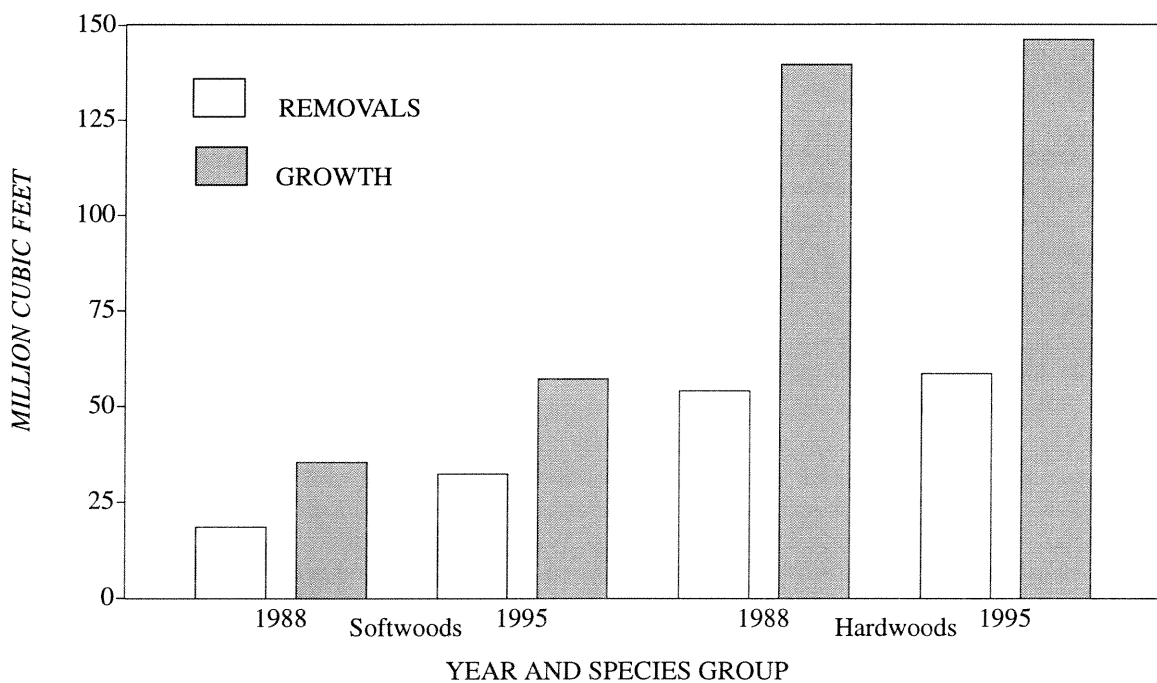


Figure 4.—Average annual removals and average net annual growth of live trees on timberland by species group, Ozark counties, Arkansas, 1988 and 1995.

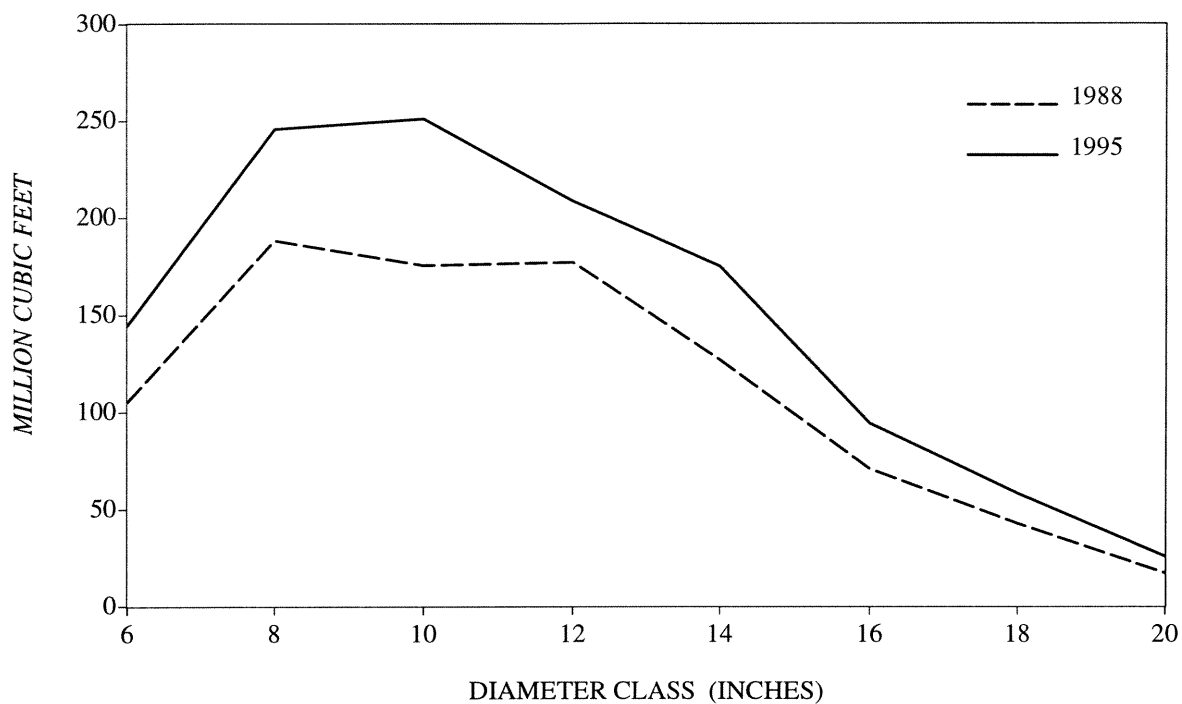


Figure 5.—Volume of live softwood trees on timberland by diameter class, Ozark counties, Arkansas, 1988 and 1995.

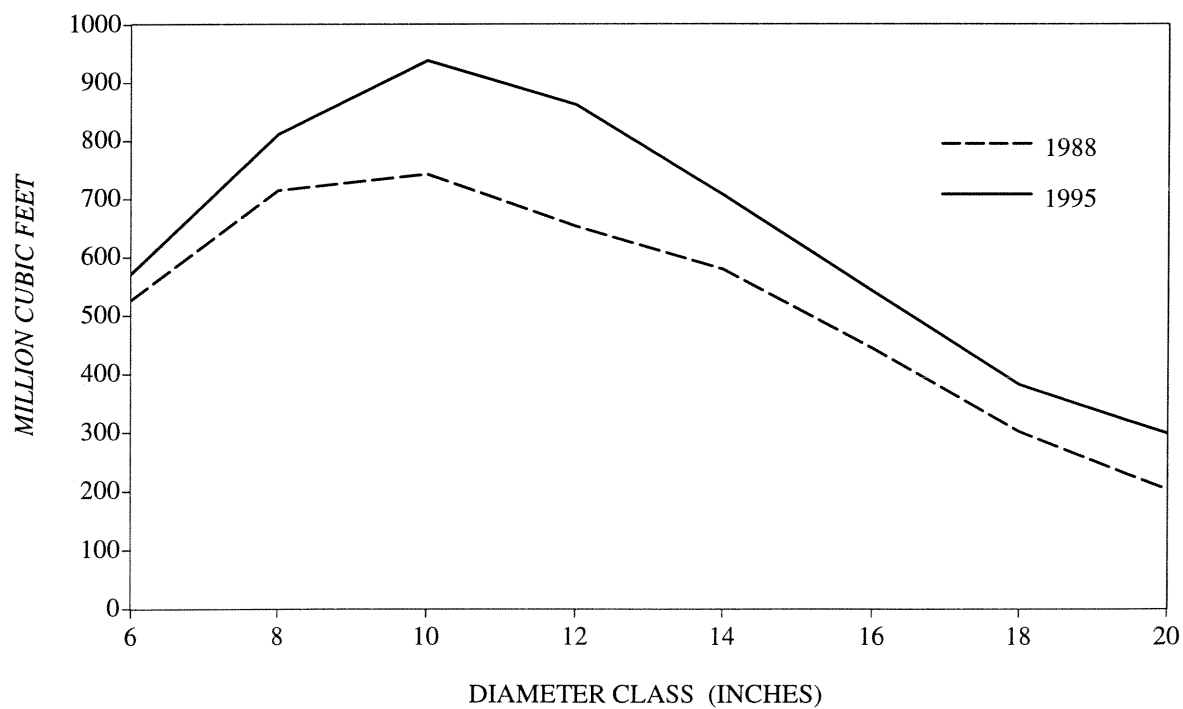


Figure 6.—Volume of live hardwood trees on timberland by diameter class, Ozark counties, Arkansas, 1988 and 1995.

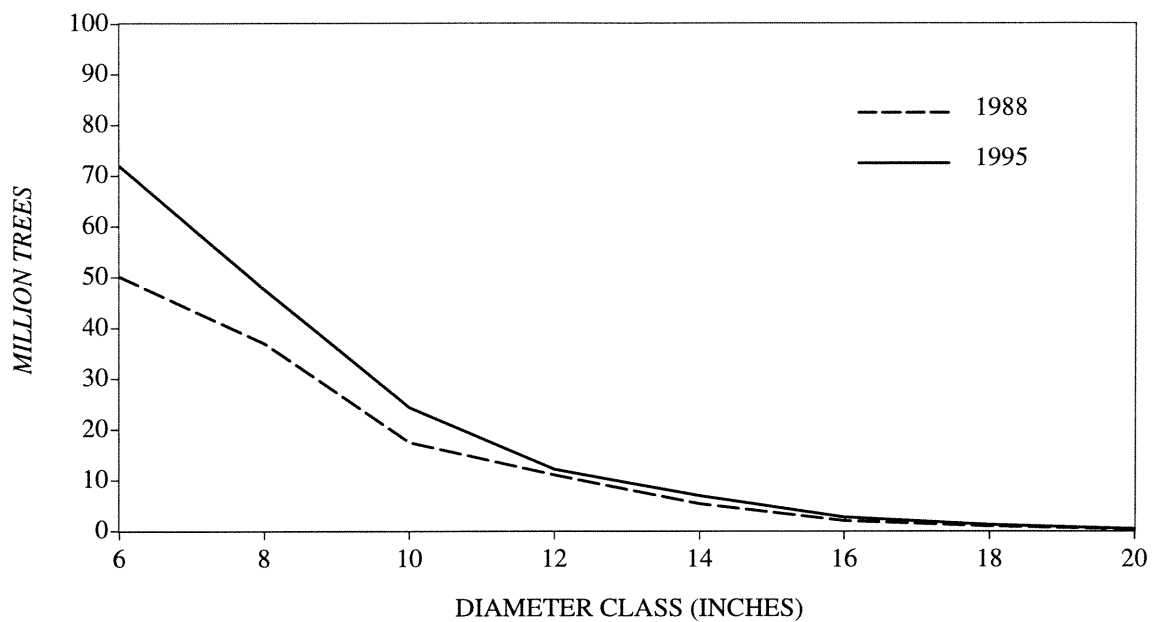


Figure 7.—Number of live softwood trees on timberland by diameter class, Ozark counties, Arkansas, 1988 and 1995.

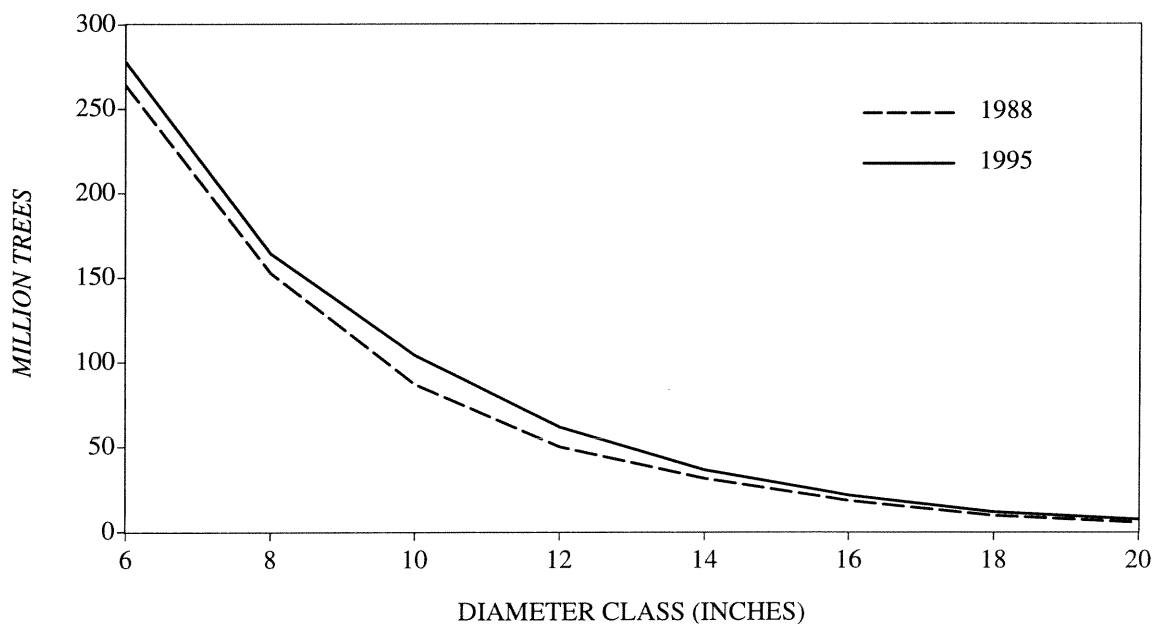


Figure 8.—Number of live hardwood trees on timberland by diameter class, Ozark counties, Arkansas, 1988 and 1995.

Rosson, James F., Jr.; London, Jack D. 1997. Forest statistics for Arkansas' Ozark counties—1995. Resour. Bull. SRS-15. Asheville, NC: U.S. Department of Agriculture, Forest Service, Southern Research Station. 45 p.

Tabulates forest resource information from a new inventory of the Ozark counties of Arkansas.

Keywords: Area, forest type, ownership, stand size, volume.

The United States Department of Agriculture (USDA) prohibits discrimination in its programs on the basis of race, color, national origin, sex, religion, age, disability, political beliefs, and marital or familial status. (Not all prohibited bases apply to all programs.) Persons with disabilities who require alternative means for communication of program information (braille, large print, audiotape, etc.) should contact USDA's TARGET Center at 202-720-2600 (voice and TDD).

To file a complaint, write the Secretary of Agriculture, U.S. Department of Agriculture, Washington, DC 20250, or call 1-800-245-6340 (voice) or 202-720-1127 (TDD). USDA is an equal employment opportunity employer.

United States
Department of Agriculture

Forest Service

**Southern
Research Station**
P.O. Box 2680
200 Weaver Blvd.
Asheville, NC 28802

OFFICIAL BUSINESS
Penalty for Private Use \$300

