

Microsatellite DNA suggests regional structure in the fusiform rust fungus *Cronartium quercuum* f. sp. *fusiforme*

TL Kubisiak¹, JH Roberds¹, PC Spaine² and RL Doudrick¹

¹USDA Forest Service, Southern Research Station, Southern Institute of Forest Genetics, 23332 Hwy 67, Saucier, MS 39574, USA;

²USDA Forest Service, Forestry Sciences Laboratory, 320 Green Street, Athens, GA 30602, USA

This paper reports results obtained from microsatellite DNA analysis of genetic structure for populations of the native fungus *Cronartium quercuum* f. sp. *fusiforme* infecting loblolly pine (*Pinus taeda* L.) over much of this host's natural range. Mostly all fusiform rust galls formed under field conditions are produced as a result of infection and colonization by haploid mycelium originating from a single basidiospore of *C. quercuum fusiforme*. If multiple infections do occur, then only a single haplotype must ultimately dominate and be responsible for gall formation. High levels of microsatellite variability exist in *C. quercuum fusiforme* and most of this variation occurs within local populations (average 88.4%). A statistically significant proportion, however, is found among populations, and the

magnitude of this differentiation is closely associated with geographic distance between populations. Unweighted pair-group mean analysis and principal components analysis both indicate that at least four genetically distinct regional groups of *C. quercuum fusiforme* exist in the south Atlantic and Gulf coastal plains. In summary, the distribution of genetic variability in *C. quercuum fusiforme* is consistent with a hypothesis of at least four metapopulations with gene flow occurring less among regions than among populations within regions, and where overall levels of gene migration are related to geographic distance between populations.

Heredity (2004) 92, 4150, advance online publication, 17 September 2003; doi: 10.1038/sj.hdy.6800352

Keywords: simple sequence repeat; spermatia; hymenium; allelic diversity; genetic differentiation; population structure

Introduction

Most sexually reproducing fungal species pathogenic on forest trees are thought to possess substantial genetic variability. These fungi, unless recently introduced, have undergone an extended period of coevolution with their host species that themselves are generally genetically diverse. Most, if not all, forest tree species exist as populations growing in either an undomesticated or partly domesticated state. Even the few that are intensively managed are grown primarily under semi-natural conditions and almost all have the ability to survive and grow in an array of environments. Their fungal pathogens then must also have the capacity to function and reproduce in a variable environment and must retain the capability to adapt to the changing environmental challenges. These requirements suggest that a reservoir of genetic variation that can be exploited for purposes of survival and population expansion is highly beneficial.

To begin to understand which evolutionary processes contribute to the genetic variability present in these organisms, it is necessary to determine how this variation is distributed within and among populations, and for widespread pathogens, whether regional varia-

tion patterns exist. MacDonald (1997) has pointed out that information about how crop pathogens evolve can be used to improve disease management in agricultural ecosystems. Even though the pathosystems involved differ, the same conclusion is likely to hold for efforts directed at controlling pathogen populations in forest ecosystems.

This paper reports results from an analysis of genetic structure for populations of *Cronartium quercuum* (Berk.) Miyabe ex Shirai f. sp. *fusiforme* (Burdsall and Snow, 1977) infecting loblolly pine (*Pinus taeda* L.) over much of this host's natural range. *C. quercuum fusiforme* is a macrocyclic, heteroecious rust fungus that kills or severely damages loblolly and slash pines (*P. elliotii* var. *elliottii* Engelm.) growing in the southeastern United States. It typically forms fusiform-shaped swellings, known as galls, at points of infection on pine hosts. In this research, we identified microsatellite marker loci that segregate in populations of this pathogen and base our analysis of population structure on allele frequency variation observed for these loci. Previously, little was known about how genetic variability is distributed across the landscape that comprises the natural range of infection for this pathogen. A number of earlier investigations, however, uncovered evidence that indicates that this formae speciales harbors considerable genetic variation. Variation in pathogenicity was shown to occur among isolates collected from different geographic regions (Snow and Kais, 1970; Snow *et al.*, 1975; Powers *et al.*, 1977; Walkinshaw and Bey, 1981; Powers, 1985; Kuhlman, 1990), among different galls within regions (Snow

Correspondence: TL Kubisiak, USDA Forest Service, Southern Research Station, Southern Institute of Forest Genetics, 23332 Hwy 67, Saucier, MS 39574, USA. E-mail: tkubisiak@fs.fed.us

Received 14 March 2002; accepted 1 July 2003

et al, 1975, 1976; Powers et al, 1977, 1978; Snow and Griggs, 1980; Kuhlman, 1992) and among isolates originating from different dikaryotic spores collected within single galls (Powers, 1980; Kuhlman and Matthews, 1993). In an exploratory examination of genetic variability in *C. quercum fusiforme* occurring on loblolly pine, Hamelin et al (1994) obtained results with random amplified polymorphic DNA (RAPD) markers that suggest populations west of the Mississippi river might be differentiated from those in eastern areas. Still, by far, most of the genetic diversity observed occurred within the regions studied.

In contrast to the situation for *C. quercum fusiforme*, patterns of genetic variability among and within North American populations of *C. ribicola* JC Fischer, a pathogen that infects white pines (subgenus *Haploxyylon*), have been intensely investigated. Unlike *C. quercum fusiforme*, *C. ribicola* is an exotic pathogen in North America, having been separately introduced to both eastern and western portions of this continent early in the 20th century (Maloy, 1997). Investigations in eastern Canada and in western North America based on neutral genetic markers indicate that most genetic diversity in this fungus is found among individual infections within local populations, but that modest differentiation also occurs among populations within geographic regions (Hamelin et al, 1995, 1998; Kinloch et al, 1998; Et-touil et al, 1999). Furthermore, there is no evidence for genetic variability among population composites representing different regions within either eastern or western areas. Populations in each area are believed to be individual gene pools shaped by founder and migration events that collectively form distinct eastern and western metapopulations that are highly differentiated from each other (Hamelin et al, 2000).

Our goal for the research described herein is to acquire a more detailed and complete understanding of population structure for *C. quercum fusiforme* occurring on loblolly pine that both supplements and goes beyond the initial work described in Hamelin et al (1994). In the following sections, we present an account of procedures used to identify and select microsatellite loci appropriate for the study of genetic differentiation among as well as within populations of this pathogen, report estimates of descriptive genetic diversity parameters associated with microsatellite loci segregating in this formae speciales

and disclose inter- and intraregional genetic variation patterns detected during our investigation. Finally, we compare our results to patterns of variability previously reported for genetic marker loci in *C. quercum fusiforme* and to findings regarding the distribution of genetic variation for neutral markers in *C. ribicola*.

Materials and methods

Subpopulation sampling and DNA extraction

Samples of *C. quercum fusiforme* were collected at 19 sites across the coastal plain of the southeastern United States (refer Figure 1). Collections were obtained from three locations in Texas, three in Louisiana, five in Mississippi, two in Alabama, two in Georgia, and one in Florida during October and November of 1997. Specimens consisting of spermatial exudate from three additional Georgia sites collected in October and November of 1992 were added to expand our sample of locations. Most galls sampled occurred on naturally regenerated loblolly pine less than 25 years in age, although some occurred on trees in plantations. At the GPTMS site, samples were collected from juvenile slash pines. Galls showing signs of imminent sporulation were selected for sampling, and entire galls or gall sections containing spermatogonia were collected. Stands were generally not greater than 10–20 acres in size. Each sample was assigned a unique ID, placed on ice, and brought back to the laboratory for DNA extraction and analysis. For galls and gall sections, the bark was peeled/flaked off and a portion of the distinct orange-colored hymenium was gently scraped and extracted. For the spermatial samples, spores were separated from the nectar, washed, and extracted. DNA was extracted from approximately 50mg of tissue using the Nucleon PhytoPure DNA Extraction Kit (Amersham International plc, Buckinghamshire, England).

Construction of enriched repeat library for *Cqf*

Approximately 5.0 µg of DNA extracted from a single basidiospore mycelial culture (gametothallus) of *C. quercum fusiforme* was sent to BC Research Inc. (Vancouver, British Columbia, Canada), and a dinucleotide repeat-enriched library (AC/TG_n or AG/TC_n) consisting of 170 positive clones was constructed and

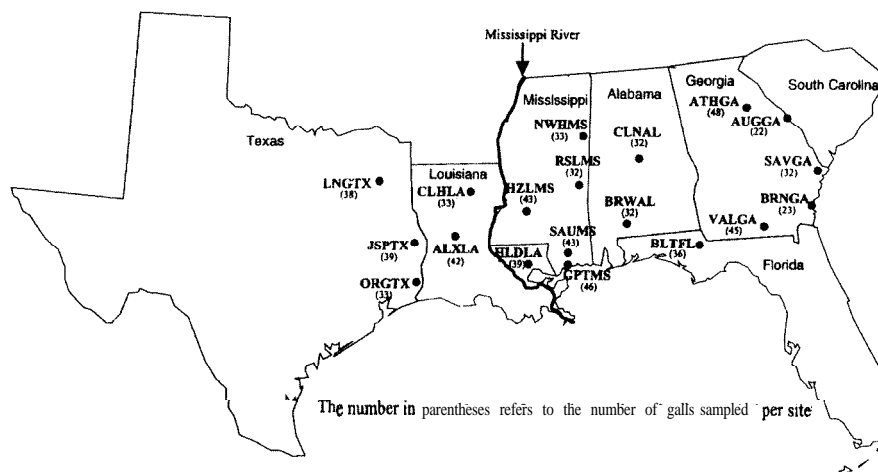


Figure 1 Map of the geographic origin of the 19 *C. quercum* f. sp. *fusiforme* collection sites.

stored as glycerol stocks. Additional information regarding dinucleotide repeat library construction may be obtained from Dr Craig Newton (cnewton@bcrcresearch.corn).

Insert size and sequence determination

To assess insert sizes and prepare sequencing template, 1.0 μl of each of the glycerol stocks was diluted 20-fold and 1.0 μl was PCR amplified using the M13 universal (-40) and M13 reverse (-24) primers (Operon Technologies, Inc., Alameda, CA, USA). Approximately 5.0 μl of each reaction was run out on 3.0% agarose gels to assess insert size, and the remaining reaction was precipitated by the addition of 2.0 μl linear polyacrylamide and three volumes of cold ethanol, washed with 70% ethanol and dried at room temperature. Resuspended samples were sequenced on an Applied Biosystems 373A automated DNA sequencer (Applied Biosystems, Inc., Foster City, CA, USA) using the ABI PRISM dye terminator cycle sequencing kit as described by the manufacturer. Only those clones/sequences harboring stretches of perfect repeat ($n \geq 12$, where n is the number of dinucleotide repeat units) were selected for oligonucleotide primer design. Oligonucleotide primer sequences were designed using the Oligo[®] Primer Analysis Software version 5.0 (National Biosciences, Inc., Plymouth, MN, USA). In general, 21-mers were selected if possible, but primer lengths down to 18 were accepted if longer primers were not available. The low end of the T_d range was lowered, and duplexes allowed (except in the last five bases on the 3' end) if necessary to obtain compatible primers. Oligonucleotide primers were synthesized by Integrated DNA Technologies, Inc. (Coralville, IA, USA).

Microsatellite PCR amplification

Individual microsatellite loci were PCR amplified in 24 μl total volume: 3.125 ng of template DNA, 1 μl each of forward and reverse primers (5 μM stocks), 3.6 μl of dNTPs (1 mM stock), 2.4 μl 10 x *Taq* DNA polymerase reaction buffer (500 mM KCl, 100 mM Tris-HCl, 1.0% Triton X-100, 15 mM MgCl_2), and 1.0 U *Taq* DNA polymerase. Although all primer pairs amplified sufficient product for detection using 1.5 mM MgCl_2 per reaction, 2.25 mM was found to result in more robust amplification for some DNA templates. Reactions were loaded in flexible microtiter plates and overlaid with 25 μl of mineral oil. Microtiter plates were placed in preheated (85°C) programmable temperature cyclers (MJ Research PTC-100) and covered with mylar film. The DNA samples were immediately subject to amplification using the following 'touchdown' profile: 2 min at 95°C; followed by 10 cycles of 1 min at 92°C, 20 s at X, and 20 s at 72°C, where X = 73°C in the first cycle and decreases by 2°C every cycle thereafter; followed by 25 cycles of 20 s at 92°C, 20 s at 55°C, 20 s at 72°C; followed by a 5 min extension at 72°C and an indefinite hold at 4°C.

Microsatellite selection and characterization

All primer pairs that amplified a single band of expected size from the single basidiospore mycelial culture of *C. quercuum fusiforme* from which the enriched library had been constructed, and did not amplify any bands from a loblolly pine control, were selected for further characterization. Promising primer pairs were then screened

against a panel of pooled DNA samples of *C. quercuum fusiforme* to assess the polymorphic nature of each band. Three randomly selected galls from seven sites were used to construct site-specific bulks. Based on this screen, a total of 12 polymorphic microsatellites were chosen for this study. The inheritance pattern of the selected microsatellites was then examined in defined pedigrees. DNAs were extracted from gametothalli produced from single-urediniospore cultures as described in Doudrick et al (1993), and the bands detected were tested for Mendelian segregation and genetic linkage. For each microsatellite, the forward primer was 5'-end labeled with one of the three possible fluorescent dyes (either HEX, 6-FAM, or TET) to facilitate detection and analysis using the Applied Biosystems 373A automated DNA sequencer and the GENESCAN[®] version 1.1 fragment analysis software (Applied Biosystems, Inc., Foster City, CA, USA). Microsatellites were multiplexed by color and size allowing for the simultaneous analysis of up to six loci in a single gel run. Allele sizes were determined by including the GENESCAN[®]-500[TAMRA] internal size standard in each sample lane. All alleles were classified to the nearest odd or even base pair. For those cases where an allele was estimated to be exactly half way between two size classes, it was visually classified using other alleles of apparent similar size from the same electropherogram.

Data analysis

Chi-square (χ^2) tests were used to assess goodness-of-fit of segregating polymorphisms to expected Mendelian ratios. Loci were tested for linkage using χ^2 tests and results confirmed using the software package JoinMap version 2.0 (Stam and van Ooijen, 1995). A search for common/redundant haplotypes within as well as among populations was performed. Allele frequencies for each population were computed and estimates obtained for effective number of alleles per locus (n_e), Nei's (1973) gene diversity (h), Nei's unbiased measure of genetic distance (D), and Michalakis and Excoffier's (1996) genetic differentiation measure (Φ_{ST}), using the software program POPGENE version 1.31 (Yeh et al, 1997) and ARLEQUIN version 2.001 (Schneider et al, 2000). In addition, χ^2 tests were conducted to test homogeneity of allele frequencies among populations. For analysis in ARLEQUIN, the difference in length between amplified products was assumed to be the direct consequence of changes in repeat numbers; therefore, the smallest allele at each locus was assigned a repeat length of one and was used as a reference to assign a repeat length to the remaining alleles. Associations between allele frequency and latitude and/or longitude were studied using stepwise regression analysis in the PROC REG procedure in SAS version 8.01 (SAS, 1999). The models considered included both linear and quadratic components. A variable was only added to the model if its F-statistic was significant at the 1% level. Once added, any variable that did not have an F-value significant at the 1% level was deleted from the model. Estimates for genetic distance (D) and among population differentiation (Φ_{ST}) were determined for each pair of populations and associations with geographic distance were investigated using the PROC REG procedure in SAS. Genetic associations among populations were first studied using

unweighted pair-group mean analysis (UPGMA) based on estimates for Nei's genetic distance, and then by principal components analysis (PCA) conducted on the allele frequency data using the PROC PRINCOMP procedure in SAS. A hierarchical analysis of molecular variance (AMOVA) based on the suggested population groupings was then performed using ARLEQUIN.

Results

Identification of microsatellites in *C. quercuum fusiforme*. A total of 170 *C. quercuum fusiforme* genomic DNA clones putatively positive for dinucleotide repeats were subjected to PCR amplification to assess insert size and prepare sequencing template. Direct cycle sequencing was performed on those clones that amplified only a single easily observable PCR band. Inserts ranged in size from approximately 225 base pairs up to 1300 base pairs, averaging 650 base pairs. The number of repeat units per clone ranged from as few as three to as many as 63, averaging 15.7. Sequence data from a total of 126 unique repeat-containing clones were available for primer design. For 21 of the clones, the repeat was too close to the cloning site of the vector to facilitate primer design. Using fairly stringent criteria, primer pairs were developed for 37 clones. Of the 37 primer pairs constructed, 20

were successful in amplifying a single band of expected size from the gametothallic isolate of *C. quercuum fusiforme* used to produce the enriched library, five failed to amplify any bands, and 12 amplified more than one band. None of the 37 primer pairs amplified any bands from the loblolly pine control, suggesting that the microsatellite primer pairs were specific to the *C. quercuum fusiforme* genome. A total of 12 microsatellite markers were selected for this study.

Testing for Mendelian segregation and genetic linkage. Gametothalli derived from two unrelated single-ure-dinospore cultures of *C. quercuum fusiforme* were used to examine the segregation ratios for the microsatellite markers. A total of 48 gametothalli were derived from one single-spore culture (Pedigree 1), and 16 from another (Pedigree 2). Of the 12 microsatellites assayed, seven were found to be segregating in at least one of the two pedigrees. Based on χ^2 analyses, only one marker (Cqf151) was found to deviate significantly from its expected Mendelian inheritance ratio. This marker, however, was found to deviate in only one of the two pedigrees examined ($P < 0.01$ in Pedigree 1 and $P = 1.0$ in Pedigree 2). No spurious or otherwise unexpected alleles were found for any of the loci. Based on recombination rates observed in the two pedigrees, there was no

Table 1 Microsatellite primer sequence, repeat type, allele size range, and number of alleles identified in 19 populations of *C. quercuum* f. sp. *fusiforme* located along the south Atlantic and Gulf Coast of the United States

Locus	Primer sequence 5'3'	Repeat type	Allele size range (bp)	Number of alleles
Cqf045	F: CTGGTTAGGAGCATGTGTTCA R: GTCAGAGACTTATCTTGTAGG	(AC/TG) _n	211-285	34
Cqf055	F: CTCTATTGCTTCTCGGGTCAT R: CCAGGATCCAGGGTCTTTAT	(AC/TG) _n	150-166	6
Cqf063	F: AGTCCACCTGAACAACAACA R: ATCAAAAAGTTCCCATCAATC	(AC/TG) _n	274-522	81
Cqf065	F: GGAGAGATTGTGTACGTG/ITG R: CTAAAGCGAGATGAGGATGTC	(AC/TG) _n	423-485	26
Cqf078	F: CAAACACGTACACACATC R: ATCTTTGGTTGACTTCTT	(AG/TC) _n	138-206	24
Cqf083	F: ACACGGTCTTAGGTTTAGC R: CCACGGTATTGACATTTTA	(AG/TC) _n	138-164	21
Cqf084	F: GAAGAGAAGGAGAAGGAGGTC R: CGAGCGGAAGGAAGCGAAGAT	(AG/TC) _n	159-209	25
Cqf088	F: CTCTTTCCGTCTCGTATTTTG R: TTTCTCGTTGTTCTCGTGTC	(AG/TC) _n	237-277	20
Cqf096	F: CGACAATGATAGAGAGTGAG R: TGATAAGCAGCAAAATAAT	(AG/TC) _n	176-226	23
Cqf151	F: ATCAATCACCCATAACTCAT R: GGAAACCTAAACAAAAGAAA	(AG/TC) _n	256-470	51
Cqf165	F: CATCTGCTGTCAACTGTCA R: TGACTTACCAGCAATACCA	(AG/TC) _n	250-324	35
Cqf166	F: GTGGAGACTGTGGCTACTGTG R: TGGTCTAACTTTACTTGTGAG	(AG/TC) _n	365-439	35

^aF = forward primer, R = reverse primer.

significant evidence for genetic linkage between/among any of the seven segregating loci ($P \geq 0.38$ for χ^2 analyses, $\text{LOD} \leq 0.58$ for maximum-likelihood-based estimation).

Genetic differentiation in *C. quercuum* fusiforme

Data describing the microsatellite loci used in our analyses are presented in Table 1. Number of alleles observed for the various loci varied from six to 81 with most loci having numbers in the range 20–35. Sufficient variation was displayed by the 12 microsatellite loci to identify uniquely almost every gall sample analyzed. Only two samples, both from the NWHMS population, were found to have the same alleles at all loci scored. Allele frequencies for alleles greater than 10% frequency over all populations, plus those found to be significantly associated with longitude, are presented by population in Table 2. After correcting for the presence of low-frequency alleles, all single-locus contingency χ^2 analyses for heterogeneity of allele frequencies across populations were found to be highly significant ($P < 0.00001$).

Differentiation statistics computed over all populations are shown in Table 3. Values obtained for effective numbers of alleles per locus ranged from 2.8 to 31.3. Genetic diversity varied among loci from 0.64 to a high of 0.97, and among population differentiation (Φ_{ST}) differed from a low of 0.019 to a maximum of 0.233 with a mean of 0.116. Using stepwise regression analysis, frequencies of 35 alleles at 10 loci were found to be significantly associated with latitude and/or longitude ($P < 0.01$). All 35 alleles had frequencies associated with longitude (see the *bold-italic* markers in Table 2), but two also showed associations with latitude. The R^2 or proportion of the variation explained by the models ranged from a low of 0.33 to a high of 0.80. In addition, at several loci, associations ($P < 0.01$) were detected between longitude and number of alleles per population (Cqf084 and Cqf165) and between longitude and gene diversity (Cqf065, Cqf084, and Cqf165). For both Cqf065 and Cqf165, estimates of parameters were higher in eastern populations and lower in the west. The opposite trend was observed for locus Cqf084.

Unbiased estimates of genetic distance (D) between pairwise comparisons of populations computed across all 12 loci ranged from a low of 0.081 to a high of 0.94, averaging 0.42. These estimates were shown to be significantly associated with the geographic distance between populations ($P < 0.0001$ for the F-test and $R^2 = 0.42$). Similarly, estimates of genetic differentiation (Φ_{ST}) between paired populations ranged from a low of -0.27 to a high of 0.52, averaging 0.06. These estimates were also found to be significantly associated with geographic distance separating populations ($P = 0.0002$ for the F-test and $R^2 = 0.08$). Thus, it is clear that geographically separated populations are more highly genetically differentiated from each other than geographically proximate populations.

Hierarchical structure among populations was studied using UPGMA on genetic distance and by PCA based on allele frequencies. Results from both methods suggested at least four distinct groups: an eastern Gulf and south Atlantic Coast group (AUGGA, ATHGA, BRNGA, BLTFL, SAVGA, and VALGA), a mid-eastern Gulf Coast group (BRWAL, CLNAL, NWHMS, and RSLMS), a mid-western Gulf Coast group (GPTMS, HLDLA, HZLMS,

and SAUMS), and a western Gulf Coast group (ALXLA, CLHLA, JSPTX, LNGTX, and ORGTX) (Figure 2). The first two principal components accounted for 47.9% of the total variation and divided the populations into the same four basic groups as UPGMA. It is notable that the sample collected from slash pine, GPTMS, does not separate out as a distinct unit but is found clustered with its geographic neighbors. This suggests that *C. quercuum fusiforme* infecting slash pine may not be genetically distinct from *C. quercuum fusiforme* infecting loblolly pine.

The four groups were chosen to serve as upper level categories in a hierarchical AMOVA. Differentiation measures estimated from this AMOVA are shown in Table 4. Considering all loci, the majority of the microsatellite variation occurs 'within-populations', but the 'among-groups' component generally is larger than the 'among-populations within-groups' component. Genetic diversity descriptive statistics estimated for each of the four regions separately are presented in Table 5. Genetic identities and distances among the four groups are presented in Table 6. In summary, the populations sampled appear to cluster into four distinct groups largely based on longitude.

Discussion

Previously, it was not known whether perennial fusiform rust galls found in nature are primarily genetically homogeneous, that is, formed as a result of infection and colonization by the mycelium originating from a single basidiospore, or whether they are typically heterogeneous, that is, formed as a result of multiple infections or contain regions of dikaryotic cells (aecidia) resulting from past fertilization events. Since genetic heterogeneity would have a direct bearing on how to analyze and interpret our data, we first looked for the presence of more than one unique haplotype within individual galls. In a total of 33 DNA samples extracted from spermogonia of 13 individual galls, all samples from the same gall were observed to have identical multilocus haplotypes. Furthermore, only four DNA samples out of the 691 collected for this study (0.006%) contained more than one allele per microsatellite locus. These results suggest that the majority of fusiform rust galls formed under field conditions are produced either as a direct result of infection and colonization by the haploid mycelium originating from a single basidiospore of *C. quercuum fusiforme*, or if multiple infections do occur then only a single haplotype must ultimately dominate and be responsible for gall formation.

Our results clearly demonstrate that high levels of microsatellite variability exist in *C. quercuum fusiforme*, and that most of this variation occurs within local populations (average 88.4%). These findings are consistent with previous observations on both pathogenic variability as well as molecular variability in *C. quercuum fusiforme*. In a comparison of pathogenicity among inocula collected along both a Florida-Georgia and a Mississippi transect, Snow *et al* (1975) found variation associated with inocula from locations within transects to be more pronounced than the variation between transects. Powers *et al* (1977) observed that variation in pathogenicity among isolates collected from individual galls within several southeastern states is influenced by a host family x state interaction and affected by a host

Table 2 Microsatellite allele of *C. quercuum f. sp. fusiforme* collected along the south Atlantic and Gulf Coasts of the United States

Locus and allele (bp)	Western Gulf Coast					Mid-western Gulf Coast					Mid-eastern Gulf Coast					Eastern Gulf Coast				
	JSPTX	LNGTX	ORGTX	ALXLA	CLHLA	HLDLA	HZLMS	GPTMS	SAUMS	RSLMS	NWHMS	BRWAL	CLNAL	BLTFL	ATHGA	VALGA	AUGGA	BRNGA	SAVGA	
Cqf055																				
229	0.0000	0.0000	0.0625	0.0000	0.0270	0.0244	0.0227	0.0233	0.0323	0.0333	0.2188	0.1053	0.1290	0.0435	0.3636	0.2778	0.2857	0.2400		
241	0.2286	0.2368	0.1875	0.1250	0.3514	0.4390	0.4318	0.3953	0.2258	0.2333	0.1250	0.0526	0.1935	0.2609	0.0909	0.1111	0.0952	0.1600		
243	0.1714	0.2105	0.2188	0.2000	0.1892	0.1220	0.2045	0.2791	0.0968	0.2667	0.0938	0.2632	0.2258	0.2174	0.2121	0.3333	0.2381	0.0400		
259	0.1143	0.1579	0.1250	0.2000	0.0000	0.0244	0.0000	0.0000	0.0000	0.0000	0.0312	0.0000	0.0000	0.0000	0.0303	0.0000	0.0000	0.0000		
Cqf063																				
150	0.3590	0.1842	0.1515	0.2381	0.2727	0.1163	0.1522	0.2093	0.2500	0.1515	0.1613	0.3333	0.2222	0.2000	0.3659	0.1905	0.2609	0.3846		
162	0.5641	0.6842	0.3030	0.5714	0.4848	0.2558	0.5435	0.3721	0.4688	0.5758	0.6452	0.5556	0.6944	0.8000	0.4878	0.6667	0.5652	0.5769		
164	0.0256	0.1053	0.2727	0.1429	0.2121	0.7179	0.6279	0.4186	0.2188	0.2424	0.1290	0.1111	0.0556	0.0000	0.1220	0.1429	0.1304	0.0385		
324	0.2000	0.1250	0.0333	0.1471	0.2069	0.0000	0.0000	0.0513	0.0526	0.1053	0.1000	0.0000	0.2667	0.0000	0.3000	0.0000	0.0000	0.3333		
412	0.0571	0.0000	0.0000	0.0000	0.0000	0.0000	0.0588	0.0513	0.0000	0.0000	0.0333	0.0000	0.0333	0.1282	0.0667	0.0588	0.1429	0.0000		
Cqf065																				
439	0.3684	0.0789	0.1212	0.0476	0.1515	0.0789	0.2326	0.0465	0.1935	0.3000	0.2258	0.0400	0.1389	0.0000	0.0526	0.0000	0.0000	0.0333		
441	0.3684	0.4737	0.5152	0.5238	0.5455	0.4211	0.3488	0.4419	0.1935	0.0333	0.0968	0.2000	0.1389	0.1200	0.1316	0.0909	0.2174	0.0667		
443	0.1316	0.1316	0.2424	0.1667	0.0606	0.1053	0.0698	0.1395	0.2258	0.1667	0.1935	0.0400	0.1389	0.0400	0.0789	0.0455	0.0000	0.0000		
447	0.0526	0.1842	0.0606	0.1190	0.0909	0.1579	0.1860	0.1860	0.1290	0.1333	0.1290	0.1200	0.0556	0.1200	0.0000	0.0000	0.1304	0.0333		
451	0.0000	0.0000	0.0000	0.0000	0.0000	0.0000	0.0000	0.0233	0.0000	0.0000	0.0000	0.0000	0.0833	0.2000	0.2632	0.0000	0.1304	0.0333		
453	0.0000	0.0000	0.0000	0.0000	0.0000	0.0233	0.0000	0.0000	0.0000	0.0000	0.0323	0.0400	0.0000	0.1600	0.0789	0.3636	0.2174	0.0000		
467	0.0000	0.0000	0.0000	0.0000	0.0000	0.0000	0.0000	0.0000	0.0000	0.0000	0.0000	0.0000	0.0278	0.0400	0.0000	0.0455	0.0435	0.0333		
Cqf078																				
152	0.0000	0.0000	0.0000	0.0000	0.0000	0.0000	0.0000	0.0000	0.0000	0.0000	0.1034	0.1250	0.0857	0.0213	0.1556	0.1250	0.1250	0.0625		
162	0.0000	0.0606	0.1905	0.0541	0.0000	0.2250	0.1034	0.0000	0.0833	0.0769	0.2414	0.3750	0.4286	0.5532	0.5333	0.5000	0.5625	0.5938		
166	0.3750	0.3939	0.2857	0.3784	0.2727	0.6400	0.2069	0.3214	0.2083	0.3077	0.0690	0.0000	0.0571	0.0638	0.1111	0.2500	0.0000	0.0312		
168	0.2500	0.1515	0.1429	0.2162	0.2727	0.0400	0.1000	0.4286	0.3750	0.2308	0.0690	0.0000	0.0571	0.0213	0.0667	0.0000	0.0000	0.0312		
170	0.0625	0.1212	0.1429	0.0811	0.0909	0.0500	0.1379	0.0714	0.0833	0.0769	0.1034	0.0625	0.0286	0.0213	0.0000	0.0000	0.0625	0.0312		
Cqf083																				
154	0.0000	0.0000	0.0000	0.0000	0.0303	0.0000	0.0000	0.0000	0.0000	0.0000	0.0714	0.0000	0.0000	0.0909	0.0789	0.0000	0.1053	0.0800		
170	0.0323	0.0270	0.0606	0.0000	0.0000	0.0732	0.0682	0.1250	0.1923	0.4516	0.1786	0.2500	0.2000	0.1364	0.2632	0.1000	0.2105	0.2000		
172	0.0968	0.2703	0.1515	0.1750	0.5152	0.1707	0.2273	0.2750	0.1538	0.0968	0.3214	0.1562	0.2400	0.0909	0.0789	0.0500	0.0526	0.1200		
174	0.4194	0.2703	0.3030	0.3000	0.3548	0.0606	0.1364	0.2250	0.1923	0.0968	0.1429	0.0312	0.0800	0.1364	0.0526	0.3500	0.0000	0.0800		
176	0.0645	0.1622	0.0606	0.1000	0.0645	0.0488	0.0455	0.0750	0.1923	0.0645	0.0714	0.2500	0.2400	0.3182	0.1842	0.3500	0.1053	0.2800		
178	0.0968	0.1622	0.2121	0.1750	0.1935	0.2727	0.4390	0.3636	0.0385	0.1613	0.1071	0.0312	0.0400	0.0455	0.2368	0.0500	0.4211	0.1600		
180	0.1935	0.0270	0.1212	0.1000	0.1290	0.0000	0.0455	0.0250	0.0000	0.0000	0.0000	0.0625	0.0000	0.0000	0.0000	0.0000	0.0000	0.0000		
Cqf084																				
163	0.0000	0.0000	0.0000	0.0000	0.0000	0.0000	0.0244	0.0000	0.0000	0.0000	0.0323	0.0000	0.0294	0.0222	0.0556	0.0526	0.1765	0.1071		
167	0.2857	0.4545	0.3750	0.4722	0.2308	0.1463	0.1463	0.2381	0.5000	0.5000	0.3871	0.4706	0.6765	0.5778	0.5000	0.4737	0.1765	0.5714		
173	0.0571	0.0909	0.0625	0.0833	0.1923	0.0938	0.0000	0.0238	0.0312	0.0333	0.0323	0.0588	0.0294	0.0222	0.0000	0.0000	0.0000	0.0000		
191	0.0857	0.0909	0.0625	0.0556	0.0385	0.0000	0.0000	0.0000	0.0000	0.0000	0.0000	0.0000	0.0000	0.0000	0.0000	0.0000	0.0000	0.0000		

Cqf088

247	0.0000	0.0263	0.0000	0.0000	0.0000	0.0000	0.0233	0.0000	0.0233	0.0000	0.0000	0.0333	0.0476	0.1667	0.2308	0.0769	0.1000	0.0909	0.1786
251	0.0882	0.0789	0.0909	0.1190	0.1034	0.0541	0.0233	0.0000	0.0698	0.0968	0.0625	0.3333	0.0476	0.1667	0.1538	0.2308	0.1500	0.2273	0.2857
253	0.0588	0.1316	0.1515	0.0952	0.0690	0.1622	0.0930	0.1364	0.0930	0.0968	0.0625	0.1000	0.1429	0.0833	0.1154	0.1282	0.2500	0.0909	0.1786
255	0.0294	0.0789	0.0606	0.0000	0.1034	0.0811	0.1860	0.2727	0.2093	0.2258	0.1875	0.1333	0.0476	0.0278	0.0000	0.1026	0.1500	0.0000	0.0357
259	0.2353	0.2368	0.2727	0.1190	0.0345	0.0811	0.0930	0.0455	0.0930	0.1290	0.0625	0.0333	0.0476	0.0000	0.0385	0.0000	0.0000	0.0000	0.0724
261	0.2647	0.1842	0.2424	0.2143	0.2069	0.1622	0.1628	0.1136	0.0698	0.0968	0.0000	0.0667	0.0476	0.0278	0.0385	0.0256	0.0000	0.0909	0.1071
263	0.1176	0.0789	0.0303	0.2143	0.1379	0.1081	0.1395	0.1591	0.0695	0.0645	0.1575	0.0667	0.2857	0.1359	0.0769	0.1026	0.0000	0.0000	0.0714

Cqf096

178	0.0256	0.0000	0.0938	0.0303	0.0000	0.0571	0.0695	0.2326	0.2195	0.1875	0.3000	0.3333	0.1765	0.0968	0.0417	0.0000	0.1053	0.0000	0.0000
180	0.1282	0.0000	0.0938	0.1212	0.0714	0.1429	0.2555	0.1395	0.1707	0.2500	0.2000	0.2667	0.3529	0.1290	0.1250	0.0889	0.1579	0.1765	0.2963
192	0.2564	0.1351	0.2158	0.1515	0.2143	0.1429	0.1395	0.0000	0.1463	0.0312	0.1667	0.0333	0.1176	0.1935	0.1875	0.0222	0.1579	0.3529	0.1852
198	0.1026	0.0811	0.1562	0.0000	0.0357	0.0000	0.0465	0.0000	0.0244	0.0625	0.0667	0.0333	0.0000	0.0000	0.0000	0.0222	0.0000	0.0000	0.0000
204	0.0000	0.0541	0.0000	0.1212	0.1756	0.3714	0.4156	0.1163	0.2195	0.0625	0.1333	0.3714	0.0000	0.1613	0.0625	0.1111	0.0000	0.0000	0.0000
206	0.1795	0.4324	0.1875	0.2121	0.3929	0.1429	0.0233	0.0698	0.0732	0.3125	0.1000	0.0000	0.1176	0.0000	0.0000	0.0222	0.0526	0.0000	0.0000
210	0.0000	0.0000	0.0312	0.0000	0.0000	0.0000	0.0000	0.0000	0.0000	0.0322	0.0000	0.0667	0.0000	0.0968	0.1458	0.1111	0.0000	0.0588	0.2593
212	0.0000	0.0000	0.0000	0.0000	0.0000	0.0000	0.0000	0.0000	0.0000	0.0000	0.0000	0.0333	0.0000	0.0323	0.1250	0.0222	0.2053	0.0000	0.037
214	0.0000	0.0000	0.0000	0.0000	0.0000	0.0000	0.0000	0.0000	0.0244	0.0000	0.0000	0.0667	0.0000	0.0323	0.0833	0.2333	0.0526	0.0588	0.0741
216	0.0000	0.0000	0.0000	0.0000	0.0000	0.0000	0.0000	0.0000	0.0000	0.0000	0.0000	0.0000	0.0000	0.0968	0.1250	0.1778	0.1053	0.0588	0.1111

Cqf151

266	0.3030	0.1111	0.1562	0.4054	0.2333	0.0000	0.0811	0.0263	0.1026	0.0000	0.0370	0.0714	0.1111	0.0000	0.0000	0.0238	0.0500	0.0526	0.0000
268	0.3030	0.2778	0.2812	0.1351	0.2000	0.2812	0.1081	0.3684	0.1795	0.1923	0.1852	0.1071	0.1111	0.1034	0.1053	0.0714	0.0500	0.0526	0.1923
270	0.0303	0.0000	0.0000	0.0541	0.0333	0.1875	0.2973	0.1316	0.2305	0.1923	0.0000	0.1071	0.0370	0.1034	0.1053	0.0238	0.1000	0.1053	0.0000
298	0.0000	0.0000	0.0000	0.0000	0.0333	0.0625	0.0541	0.0000	0.0256	0.0000	0.0741	0.0000	0.0000	0.0345	0.0526	0.0952	0.1000	0.0526	0.0385
326	0.2414	0.3571	0.1724	0.2692	0.1250	0.0741	0.0741	0.1154	0.2000	0.1579	0.0000	0.0800	0.0000	0.1765	0.3000	0.0769	0.0000	0.0000	0.0909

Cqf165

266	0.3030	0.1111	0.1562	0.4054	0.2333	0.0000	0.0811	0.0263	0.1026	0.0000	0.0370	0.0714	0.1111	0.0000	0.0000	0.0235	0.0500	0.0526	0.0000
268	0.3030	0.2778	0.2512	0.1351	0.2000	0.2512	0.1081	0.3684	0.1795	0.1923	0.1852	0.1071	0.1111	0.1034	0.1053	0.0714	0.0500	0.0526	0.1923
270	0.0303	0.0000	0.0000	0.0541	0.0333	0.1875	0.2973	0.1316	0.2308	0.1923	0.0000	0.1071	0.0370	0.1034	0.1053	0.0238	0.1000	0.1053	0.0000
272	0.0000	0.0000	0.0000	0.0000	0.0000	0.0000	0.0000	0.0000	0.0513	0.0000	0.0000	0.0000	0.0741	0.0690	0.0000	0.0476	0.0500	0.0526	0.0769
298	0.0000	0.0000	0.0000	0.0000	0.0333	0.0625	0.0541	0.0000	0.0256	0.0000	0.0741	0.0000	0.0000	0.0345	0.0526	0.0952	0.1000	0.0526	0.0385

Cqf166

369	0.2727	0.5217	0.2222	0.3810	0.5000	0.0322	0.0256	0.0286	0.2308	0.2500	0.0000	0.0000	0.0000	0.0000	0.0000	0.0000	0.0000	0.0000	0.0000
371	0.0455	0.0435	0.1111	0.1429	0.0625	0.0000	0.0000	0.0286	0.0000	0.0000	0.0000	0.0000	0.0000	0.0000	0.0000	0.0000	0.0000	0.0000	0.0000
383	0.0000	0.0870	0.0000	0.0476	0.2500	0.5938	0.6923	0.4286	0.5000	0.3125	0.2305	0.1852	0.1304	0.3143	0.2766	0.6222	0.2000	0.5294	0.1034
399	0.2273	0.0870	0.1667	0.1429	0.0000	0.0625	0.0513	0.0000	0.0769	0.0000	0.0769	0.0741	0.0435	0.0000	0.0000	0.0000	0.0000	0.0000	0.0000

Only those alleles at greater than 10% frequency and/or those alleles significantly associated with longitude (identified in bold *italic*) are presented. Populations are arranged in the table from west to east.



Table 3 Summary of genetic diversity descriptive statistics for 12 microsatellite loci assayed on 19 populations of *C. quercuum* f. sp *fusiforme* located along the south Atlantic and Gulf Coasts of the United States

LOCUS	Sample					
	Size	n_a^a	n_e	h	Φ_{ST}	N_m
cqf045	603	34	8.0	0.88	0.078	5.9
Cqf055	651	6	2.8	0.64	0.056	8.4
Cqf063	559	81	31.3	0.97	0.127	3.4
Cqf065	642	26	7.0	0.86	0.166	2.5
Cqf078	540	24	6.7	0.85	0.179	2.3
Cqf083	596	21	7.0	0.86	0.019	25.8
Cqf084	606	25	4.5	0.78	0.115	3.8
Cqf088	628	20	11.0	0.91	0.126	3.5
Cqf096	627	23	10.5	0.90	0.144	2.9
Cqf151	402	51	18.5	0.95	0.071	6.5
Cqf165	577	35	12.7	0.92	0.098	4.6
Cqf166	504	35	7.1	0.86	0.233	1.6
Mean	578	31.8	10.6	0.87	0.116 ^b	3.8
SD		19.0	7.7	0.09		

^a n_a = observed number of alleles; n_e = effective number of alleles; h = Nei's (1973) gene diversity; Φ_{ST} = Michalakis and Excoffier's (1996) measure of among-population differentiation; N_m = number of migrants exchanged between populations per generation.

^bMean Φ_{ST} was estimated by summing variance components across loci.

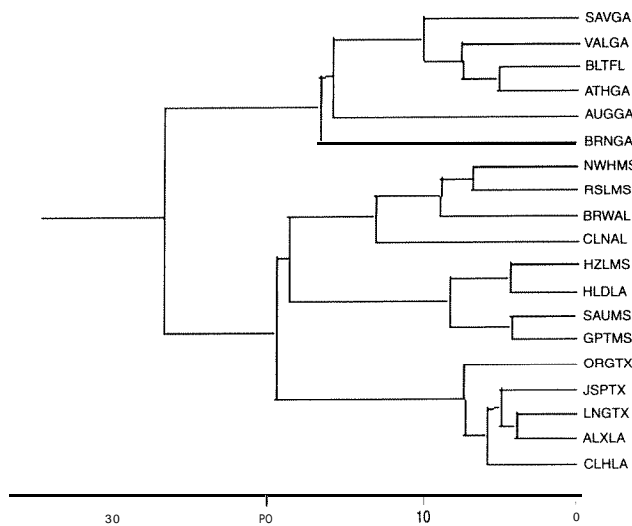


Figure 2 UPGMA dendrogram based on Nei's (1978) genetic distance.

family x collection within state interaction. Hamelin et al (1994) using RAPD markers reported that 94% of the variation in *C. quercuum fusiforme* occurred within regional assemblages of infections. However, due to the extremely small sample sizes employed in this study, samples from different populations within predefined geographic regions had to be pooled to obtain reliable allele frequency estimates. Therefore, differentiation among local populations within regions could not be distinguished from variation among individual galls within populations. Similar observations of large within-population variability have been reported for eastern Canadian populations of white pine blister rust fungus, *C. ribicola* (Hamelin, 1996; Hamelin et al, 1998; Et-touil

Table 4 Results of AMOVA for *C. quercuum* f. sp *fusiforme* located in four regions along the south Atlantic and Gulf Coasts of the United States based on the hierarchical structure suggested by UPGMA and PCA

Locus	Among populations		
	Among populations	Within groups	Among groups
	Φ_{ST}	Φ_{SC}	@CT
Cqf045	0.078***	0.007*	0.072***
Cqf055	0.056***	0.013**	0.044**
Cqf063	0.127***	0.065***	0.066*
Cqf065	0.166***	0.043***	0.128***
Cqf078	0.179***	0.032***	0.152***
Cqf083	0.014	-0.006	0.019**
Cqf084	0.115***	-0.008	0.122***
Cqf088	0.126***	0.025***	0.104***
Cqf096	0.144***	0.042***	0.106**
Cqf151	0.071**	-0.011	0.081***
Cqf165	0.098***	-0.003	0.100***
Cqf166	0.233***	0.211***	0.028
Mean ^b	0.116	0.047	0.072

^aAsterisk = probability random value is greater than observed value based on a total of 16000 permutations: * $\alpha < 0.05$, ** $\alpha < 0.01$, *** $\alpha < 0.001$, **** $\alpha < 0.0001$.

^bMean Φ statistics were estimated by summing variance components across loci, no tests for significance were performed.

et al, 1999). As a general conclusion, *C. quercuum fusiforme* exists as a highly variable formae speciales, with a large proportion of its genetic variability occurring within populations.

Although most of the microsatellite variation found in *C. quercuum fusiforme* occurs within local populations, a statistically significant proportion is found among populations, and the magnitude of this differentiation is closely associated with the geographic distance between populations. Magnitudes of the Φ_{ST} estimates obtained in this study are consistent with a previous estimate reported by Hamelin et al (1994) for an analogous measure of regional genetic differentiation (G_{ST}) in *C. quercuum fusiforme*. Whereas G_{ST} values for only three of the 12 RAPD loci studied by Hamelin et al (1994) were observed to be statistically different from random expectations ($P < 0.05$), Φ_{ST} values obtained for 11 of the 12 microsatellite loci studied in this investigation were statistically significant ($P < 0.001$). Moreover, single-locus estimates of pairwise population genetic differentiation measures were found to be significantly associated with distance between populations, demonstrating that geographically proximate populations have greater genetic similarity than geographically distant populations. These findings lead us to conclude that although long-distance spore migration is possible, it is infrequent enough so that genetic differentiation can take place.

In addition to significant levels of among-population differentiation, UPGMA and PCA both indicate that regional differentiation has occurred in *C. quercuum fusiforme*. These analyses identify at least four genetically distinct regional groups of *C. quercuum fusiforme* present in the south Atlantic and Gulf coastal states: an eastern group, a mid-eastern group, a mid-western group, and a western group. Estimates of Φ_{CT} significantly greater than random expectations were found between all pairwise combinations of these groups. A somewhat

Table 5 Summary of genetic diversity descriptive statistics for 12 microsatellite loci assayed on *C. quercuum* f. sp. *fusiforme* located in four regions along the south Atlantic and Gulf Coasts of the United States

Locus	Western group				Mid-western group				Mid-eastern group				Eastern group			
	n_a^a	n_e	h	Φ_{ST}	n_a	n_e	h	Φ_{ST}^b	n_a	n_e	h	Φ_{ST}	n_a	n_e	h	@ ST
Cqf045	2.0	7.3	0.86	0.037	2.0	4.4	0.77	-0.019	2.8	11.0	0.91	-0.006	2.0	7.6	0.87	0.006
Cqf055	6	2.7	0.64	-0.001	5	2.6	0.62	0.054*	5	2.5	0.60	0.014	4	2.1	0.53	-0.002
Cqf063	5.2	20.8	0.96	0.008	5.9	37.4	0.97	0.029	4.7	27.9	0.96	-0.026	4.3	19.1	0.95	0.176
Cqf065	12	3.4	0.71	0.052*	14	4.8	0.79	-0.006	14	7.9	0.87	0.004	24	11.3	0.91	0.061*
Cqf078	17	5.3	0.81	0.039	13	5.0	0.80	0.067*	14	8.5	0.88	0.040	17	3.3	0.70	-0.009
Cqf083	14	5.3	0.81	-0.013	10	4.7	0.79	0.017	14	6.3	0.84	-0.027	16	6.6	0.85	-0.001
Cqf084	17	5.3	0.81	-0.019	16	4.0	0.75	0.026	14	3.3	0.69	-0.013	11	3.1	0.68	0.003
Cqf088	16	7.5	0.87	-0.009	16	9.0	0.89	0.003	16	9.0	0.88	0.124**	18	9.2	0.89	0.013
Cqf096	15	6.8	0.85	0.060*	18	6.5	0.85	0.076**	13	5.9	0.83	-0.004	21	10.1	0.90	0.032
Cqf151	2.4	9.0	0.89	-0.022	3.4	14.5	0.93	0.010	2.9	19.0	0.95	-0.055	3.4	17.4	0.94	0.005
Cqf165	1.8	6.4	0.84	-0.009	2.3	7.8	0.87	-0.026	2.7	16.2	0.94	-0.027	2.8	15.3	0.93	0.040
Cqf166	1.9	5.5	0.82	0.105*	1.9	2.9	0.66	0.036	2.3	12.5	0.92	0.311***	2.8	5.2	0.81	0.237***
Mean ^c	1.9	7.1	0.82	0.013	2.1	8.6	0.81	0.020	2.0	10.8	0.86	-0.001	2.2	9.2	0.83	0.123

^a n_a = observed number of alleles; n_e = effective number of alleles; h = Nei's (1978) gene diversity; Φ_{ST} = Michalakis and Excoffier's (1996) measure of among-population differentiation.

^bAsterisk = probability random value is greater than observed value based on a total of 16 000 permutations; * $\alpha < 0.01$, ** $\alpha < 0.001$, *** $\alpha < 0.0001$.

^cMean Φ_{ST} was estimated by summing variance components across loci, no tests for significance were performed.

Table 6 Summary of genetic identity and genetic distance statistics among four regional metapopulations of *C. quercuum* f. sp. *fusiforme* located along the south Atlantic and Gulf Coasts of the United States

	Western group	Mid-western group	Mid-eastern group	Eastern group
Western group		0.741	0.763	0.635
Mid-Western group	0.300		0.793	0.647
Mid-eastern group	0.270	0.232		0.831
Eastern group	0.454	0.436	0.185	

Nei's (1978) unbiased measure of genetic identity is displayed above the diagonal and genetic distance below the diagonal.

weaker and incomplete pattern of differentiation was inconclusively suggested by the results obtained by Hamelin *et al* (1994), who reported evidence for regional differentiation in an east-west transect for only three of 12 RAPD loci. Although those investigators found significant differences between western populations on one hand and eastern and central populations on the other hand, G_{ST} values obtained between eastern and central populations were not statistically significant. In their exploratory investigation, populations in Louisiana were not sampled and populations in Mississippi were only marginally represented. With our more intensive sample, we demonstrate that Louisiana populations west of the Mississippi river join with those from Texas to make up a western metapopulation and contrary to their results, populations east of the Mississippi river are differentiated into at least three additional groups. In addition, in their exploratory investigation, population samples within predefined regional boundaries had to be pooled to obtain meaningful allele frequency estimates, and hence they could not discriminate between differentiation among individual galls within populations and differentiation among local populations.

In summary, our findings demonstrate that at least four metapopulations of *C. quercuum fusiforme* exist along

the south Atlantic and Gulf coastal plain of the United States. Gene flow between these regions appears to be less than that occurring among populations within regions. As a general trend, genetic distance and genetic differentiation are closely associated with the geographic distance between populations. This pattern of genetic differentiation is different from that reported for *C. ribicola* in eastern Canada. Et-touil *et al* (1999) found variation among provinces to be several orders of magnitude smaller than differentiation among populations within regions. Furthermore, within the eastern and western metapopulations, associations between genetic and geographic distance have not been observed in *C. ribicola*. Although genetic variability in *C. ribicola* follows a pattern consistent with a hypothesis of subpopulations within metapopulations where genetic drift or founder effects play major evolutionary roles (Kinloch *et al*, 1998; Et-touil *et al*, 1999), in *C. quercuum fusiforme* the distribution of genetic variability is consistent with a hypothesis of at least four metapopulations with gene flow occurring less among regions than among populations within regions, and where overall levels of gene migration are related to the geographic distance between populations.

Acknowledgements

We thank Dr Craig Newton for constructing the dinucleotide repeat library; Celia Harris and Alex Diner for developing the segregating gametothallic lines; Glen Johnson for his skilled technical assistance with all aspects of microsatellite marker development, DNA extractions, PCR amplification, data acquisition, and marker scoring; and Floyd Bridgwater, Sarah Covert, Alex Diner, Glen Johnson, Mary Mason, and Paula Spaine for their assistance in collecting gall and or spermatia samples for this study, and to the two anonymous reviewers whose comments helped to strengthen the manuscript.

References

- Burdsall Jr HH, Snow GA (1977). Taxonomy of *Cronartium quercuum* and *C. fusiforme*. *Mycologia* 69: 503-508.
- Doudrick RL, Nelson CD, Nance WL (1993). Genetic analysis of a single urediniospore culture of *Cronartium quercuum* f. sp. *fusiforme*, using random amplified polymorphic DNA markers. *Mycologia* 85: 902-911.
- Et-touil K, Bernier L, Beaulieu J, Berube JA, Hopkin A, Hamelin RC (1999). Genetic structure of *Cronartium ribicola* populations in eastern Canada. *Phytopathology* 89: 915-919.
- Hamelin RC (1996). Genetic diversity between, within cankers of the white pine blister rust. *Phytopathology* 86: 875-879.
- Hamelin RC, Beaulieu J, Plourde A (1995). Genetic diversity in populations of *Cronartium ribicola* in plantations and natural stands of *Pinus strobus*. *Theor Appl Genet* 91: 1214-1221.
- Hamelin RC, Doudrick RL, Nance WL (1994). Genetic diversity in *Cronartium quercuum* f. sp. *fusiforme* on loblolly pines in the southern US. *Curr Genet* 26: 359-363.
- Hamelin RC, Dusabenyagasani, Et-touil K (1998). Fine-level genetic structure of white pine blister rust populations. *Phytopathology* 88: 1187-1191.
- Hamelin RC, Hunt RS, Geils SW, Jensen GD, Jacobi V, Lecours N (2000). Barrier to gene flow between eastern and western populations of *Cronartium ribicola* in North America. *Phytopathology* 90: 1073-1078.
- Kinloch Jr BB, Westfall RD, White EE, Gitzendanner MA, Dupper GE, Foord BM et al (1998). Genetics of *Cronartium ribicola* IV. Population structure in western North America. *Can J Bot* 76: 91-98.
- Kuhlman EG (1990). Frequency of single-gall isolates of *Cronartium quercuum* f. sp. *fusiforme* with virulence toward three resistant loblolly pine families. *Phytopathology* 80: 614-617.
- Kuhlman EG (1992). Interaction of virulent single-gall rust isolates of *Cronartium quercuum* f. sp. *fusiforme* and resistant families of loblolly pine. *For Sci* 38: 641-651.
- Kuhlman EG, Matthews FR (1993). Variation in virulence among single-aeciospore isolates from single-gall isolates of *Cronartium quercuum* f. sp. *fusiforme*. *Can J For Res* 23: 67-71.
- Maloy OC (1997). White pine blister rust control in North America: a case history. *Annu Rev Phytopathol* 35: 87-109.
- McDonald BA (1997). The population genetics of fungi: tools and techniques. *Phytopathology* 87: 448-453.
- Michalakis Y, Excoffier L (1996). A generic estimation of population subdivision using distances between alleles with special reference for microsatellite loci. *Genetics* 142: 1061-1064.
- Nei M (1973). Analysis of gene diversity in subdivided populations. *Proc Natl Acad Sci USA* 70: 3321-3323.
- Nei M (1978). Evolution of average heterozygosity and genetic distance from a small number of individuals. *Genetics* 89: 583-590.
- Powers Jr HR (1980). Pathogenic variation among single aeciospore isolates of *Cronartium quercuum* f. sp. *fusiforme*. *For Sci* 26: 280-282.
- Powers Jr HR (1985). Response of sixteen loblolly pine families to four isolates of *Cronartium quercuum* f. sp. *fusiforme*. In: Barrows-Broadus J, Powers HR (eds) *IUFRO Proceedings, Rusts of Hard Pines Working Party Conference (S2.06-10)*, September 1984, Georgia Center for Continuing Education, University of Georgia: Athens, GA. pp 89-96.
- Powers Jr HR, Matthews FR, Dwinell LD (1977). Evaluation of pathogenic variability of *Cronartium fusiforme* on loblolly pine in the southern USA. *Phytopathology* 67: 1403-1407.
- Powers Jr HR, Matthews FR, Dwinell LD (1978). The potential for increased virulence of *Cronartium fusiforme* on resistant loblolly pine. *Phytopathology* 68: 808-810.
- SAS Institute Inc (1999). *SAS/STAT Users Guide, Version 8*. SAS Institute Inc.: Cary, NC. 3884pp.
- Schneider S, Roessli D, Excoffier L (2000). *A Software for Population Genetics Data Analysis*. Genetics and Biometry Laboratory, University of Geneva: Switzerland.
- Snow GA, Dinus RJ, Kais AC (1975). Variation in pathogenicity of diverse sources of *Cronartium fusiforme* on selected slash pine families. *Phytopathology* 65: 170-175.
- Snow GA, Dinus RJ, Walkinshaw CH (1976). Increase in virulence of *Cronartium fusiforme* on resistant slash pine. *Phytopathology* 66: 511-513.
- Snow GA, Griggs MM (1980). Relative virulence of *Cronartium quercuum* f. sp. *fusiforme* from seven resistant families of slash pine. *Phytopathol Mediterr* 19: 13-16.
- Snow GA, Kais AG (1970). Pathogenic variability in isolates of *Cronartium fusiforme* from five southern states. *Phytopathology* 60: 1730-1731.
- Stam PW, van Ooijen (1995). *JoinMap Version 2.0: Software for The Calculation of Genetic Linkage Maps*. CPRO-DLO: Wageningen.
- Walkinshaw CH, Bey CF (1981). Reaction of field resistant slash pines to selected isolates of *Cronartium quercuum* f. sp. *fusiforme*. *Phytopathology* 71: 1090-1092.
- Yeh FC, Yang R-C, Boyle TJ, Ye Z-H, Mao JX (1997). *POPGENE, The User-Friendly Shareware for Population Genetic Analysis*. Molecular Biology and Biotechnology Centre, University of Alberta: Canada.