

Contributions of State and private forest  
lands to surface drinking water supply:

# SOUTH CAROLINA

---

**This file compiles State-specific excerpts from  
appendices A and B of the following report:**

Liu, Ning; Dobbs, G. Rebecca; Caldwell, Peter V.; Miniati, Chelcy Ford; Bolstad, Paul V.; Nelson, Stacy; Sun, Ge. 2020. Quantifying the role of State and private forest lands in providing surface drinking water supply for the Southern United States. Gen. Tech. Rep. SRS-248. Asheville, NC: U.S. Department of Agriculture Forest Service, Southern Research Station. 405 p. <https://doi.org/10.2737/SRS-GTR-248>.

**Appendix A**—Detailed information regarding forest ownership, water yield, surface drinking water intakes, and percent of water originating on State and private forest (SPF) lands in South Carolina.

**Table B.AL.1**—Public water system intakes receiving water from State and private forest land in South Carolina.

---

*[This page intentionally left blank]*

## STATE OF SOUTH CAROLINA

### Summary

State and private forest (SPF) lands cover 57.8 percent of South Carolina (figs. A.SC.1 and A.SC.2; table A.SC.1). About 53.8 percent of all South Carolina surface water originates on SPF lands (fig. A.SC.3). The majority of SPF land area is in, and surface water is from, family-owned forests, accounting for about 58.3 percent of the SPF land area and 58.7 percent of surface water from SPF. Corporate-owned forests contribute 32.2 percent of surface water from SPF and account for 33.8 percent of land area of SPF. Average annual water yield in South Carolina is about 362 mm (fig. A.SC.4). South Carolina has a total of 205 surface drinking water intakes where at least some available water comes from SPF (fig. A.SC.5). About 45.1 percent of the total population of South Carolina is served by surface drinking water overall, and South Carolina SPF surface drinking water also serves about 45.1 percent of the State population, or 2.3 million people, to some degree. About 0.9 million people in South Carolina are getting more than half of

their surface drinking water from SPF within the State (fig. A.SC.6). State and private forest lands in South Carolina also supply water to 42 surface drinking water intakes in other States (Georgia and North Carolina) (fig. A.SC.7), which collectively serve about 0.3 million people in 13 communities (fig. A.SC.8). Many public water systems in South Carolina utilize more than one intake; these systems are shown (intakes aggregated) in figure A.SC.9 by population served (symbol size) and percentage of water from SPF lands in South Carolina (symbol color). The Columbia-Lake Wateree area detail map (fig. A.SC.10) adds clarity on the hydrology, surface drinking water intakes, water originating on SPF lands, and population centers in an area where there is complex intersection between public water supply systems and population served. A case study (fig. A.SC.11) of the Greenville Water public water supply system presents an example of the important role SPF lands play in providing water supply to a single community in South Carolina, where three surface drinking water intakes receive about 69.3 percent of their water from SPF (in headwaters of two different rivers) and serve about 0.3 million people.

**Table A.SC.1—Land area by land cover and forest ownership type in South Carolina**

Land cover	Land area (km <sup>2</sup> )	Land area (acres)
Forest	54 031	13,351,632
Nonforest	29 243	7,226,136
Forest ownership type <sup>a</sup>	Land area (km <sup>2</sup> )	Land area (acres)
Federal (public)	5903	1,458,711
Tribal (public)	3	862
State (public)	2354	581,753
Local (public)	743	183,593
Corporate (private)	16 287	4,024,701
Family (private)	28 034	6,927,381
Other private	707	174,631

<sup>a</sup>State and private forest land comprises State, local, corporate, family, and other private (the last two also referred to together as nonindustrial private forest, or NIPF). Corporate ownership lands include forest land owned by forest industry as well as other corporate entities such as Timber Investment Management Organizations and Real Estate Investment Trusts (TIMOs and REITs, respectively).

## South Carolina Forested Lands by Ownership

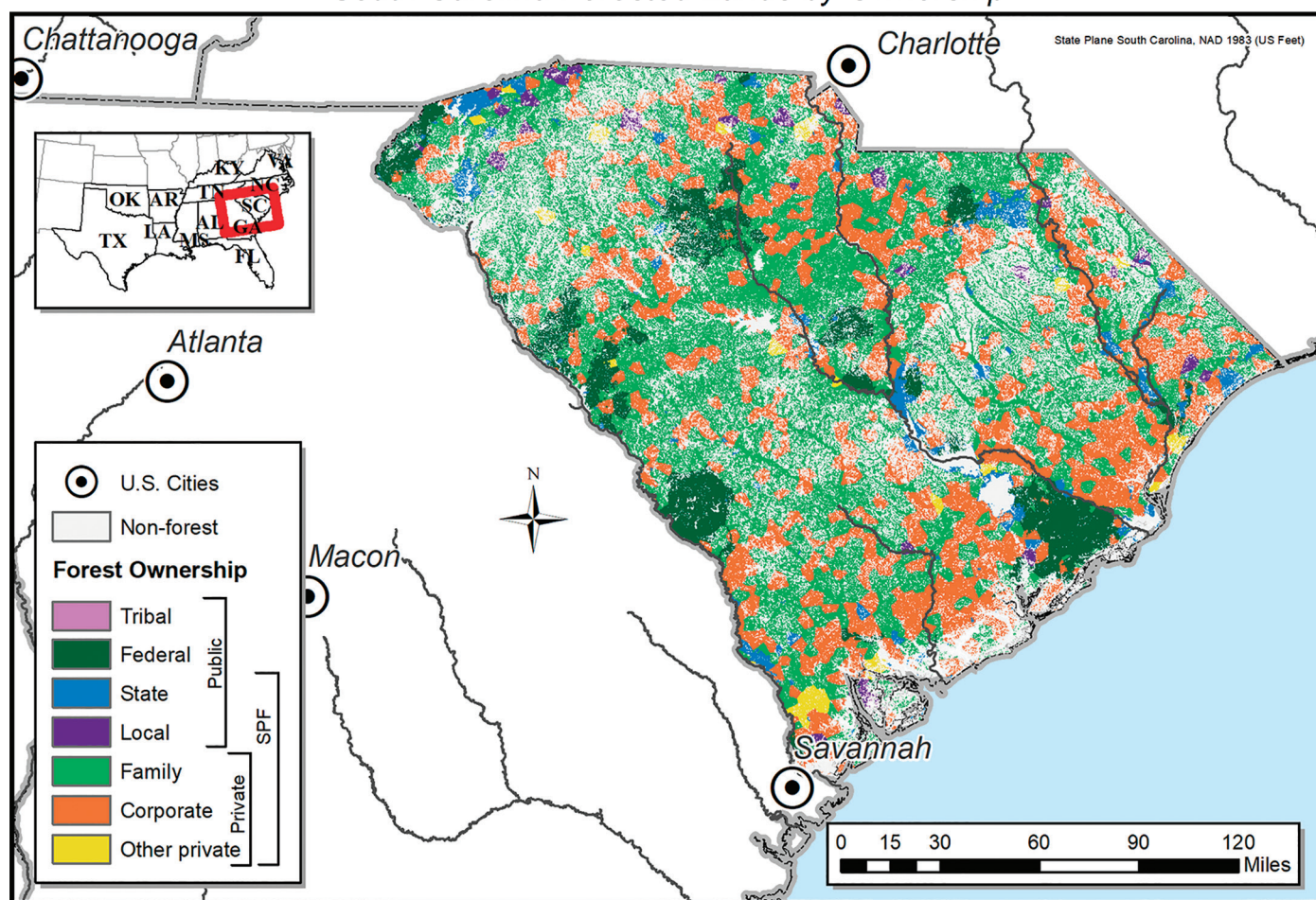


Figure A.SC.1—South Carolina nonforest land and forest lands by ownership, ca. 2014. Forest ownership data source: raster dataset by Hewes and others (2017); see report for more discussion of data derivation and accuracy.



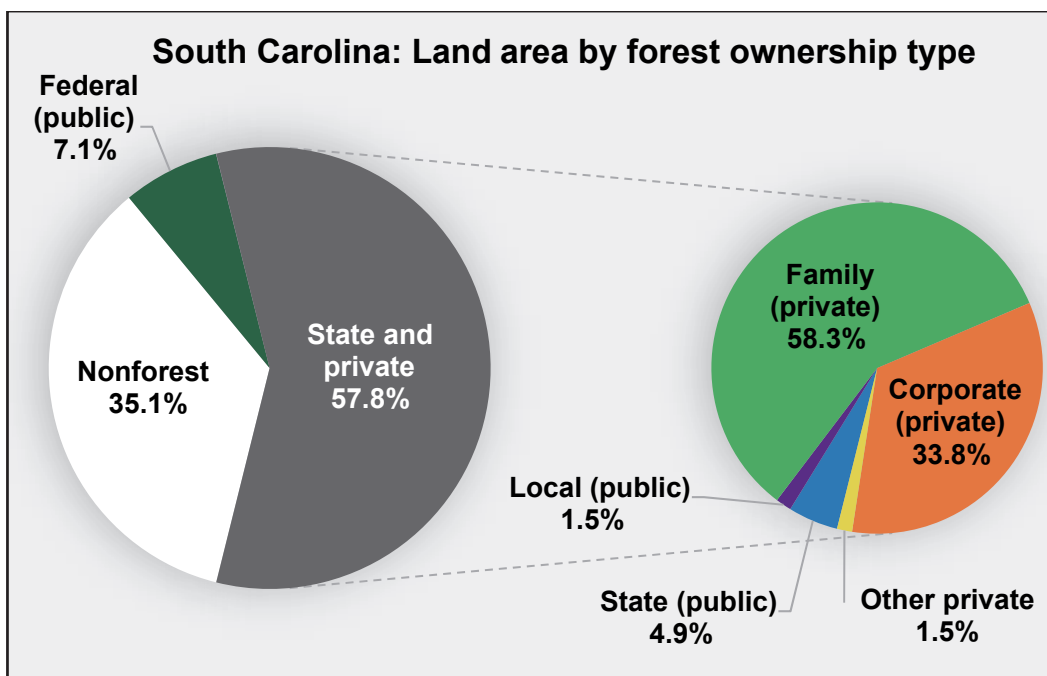


Figure A.SC.2—Land area percentages by forest ownership, ca. 2014. In the smaller circle, percentages represent portion of SPF total for each ownership category. Note: Due to rounding, percentages may not total exactly 100.

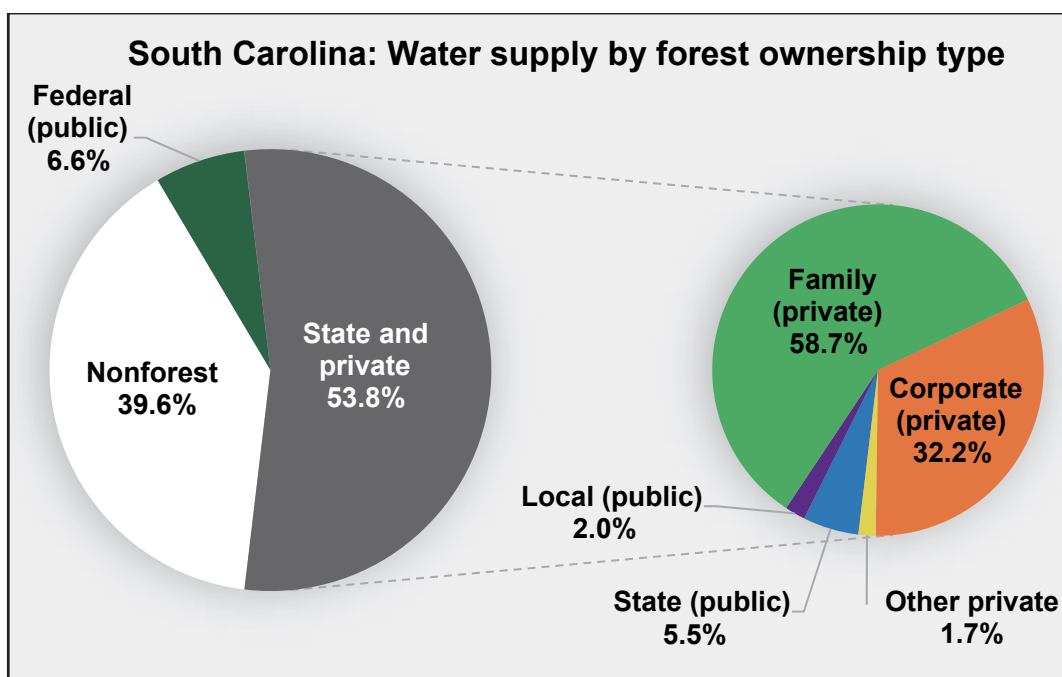


Figure A.SC.3—Percentage of South Carolina's water supply deriving from nonforest lands and forest lands of different ownership, ca. 2014. In the smaller circle, percentages represent portion of SPF total for each ownership category. Note: Due to rounding, percentages may not total exactly 100.

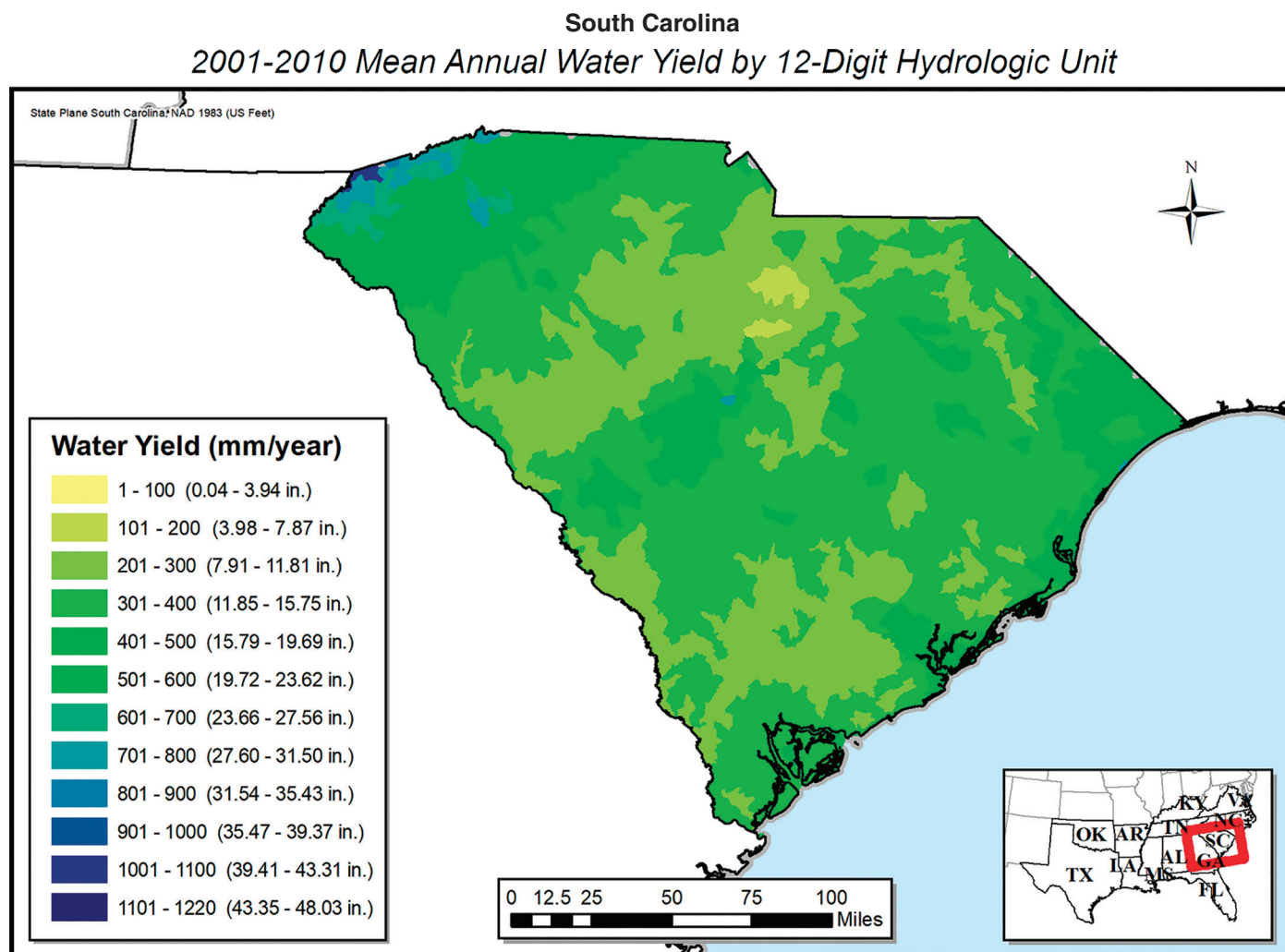


Figure A.SC.4—Estimated mean annual water yield by 12-digit hydrologic units in South Carolina, 2001–2010. Hydrologic Unit Codes (HUC) use number of digits to represent watersheds of different scales. A 12-digit HUC (HUC12) represents a small local watershed. For explanation of water yield and how it is derived, see report.

(A) Streams and Intrastate Public Water System Intakes Receiving Water from South Carolina State and Private Forests

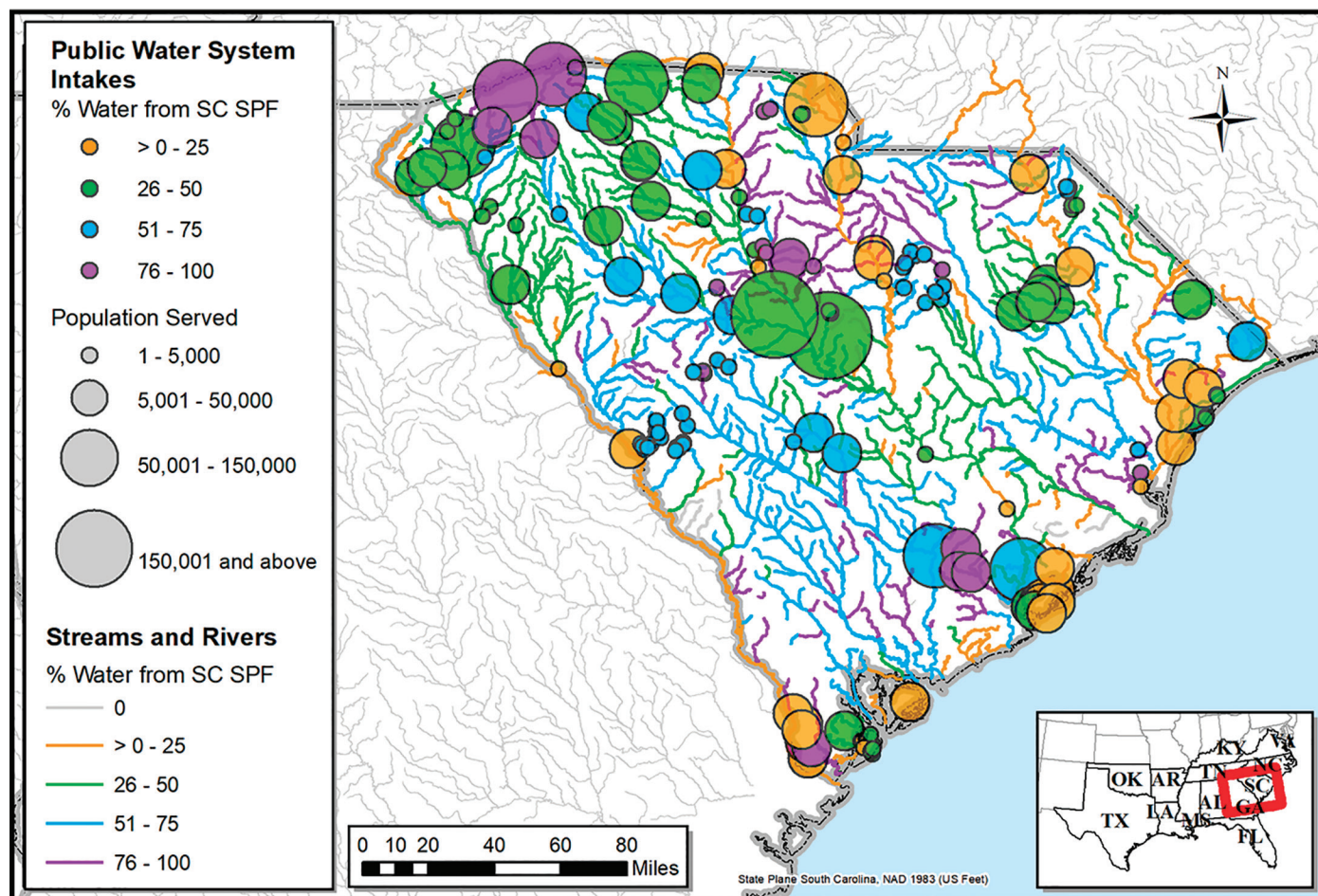


Figure A.SC.5—(A) South Carolina streams by percentage of South Carolina SPF water content, surface drinking water intakes within South Carolina by percentage of South Carolina SPF surface water available at intake (symbol color), and population served by each intake (symbol size). A total of 205 surface drinking water intakes within the State serve a population of 2,263,380 in 74 communities. Note: See figures A.SC.5 parts B and C on separate pages for streams and intakes only.



(B) Streams Receiving  
Water from South Carolina State and Private Forests

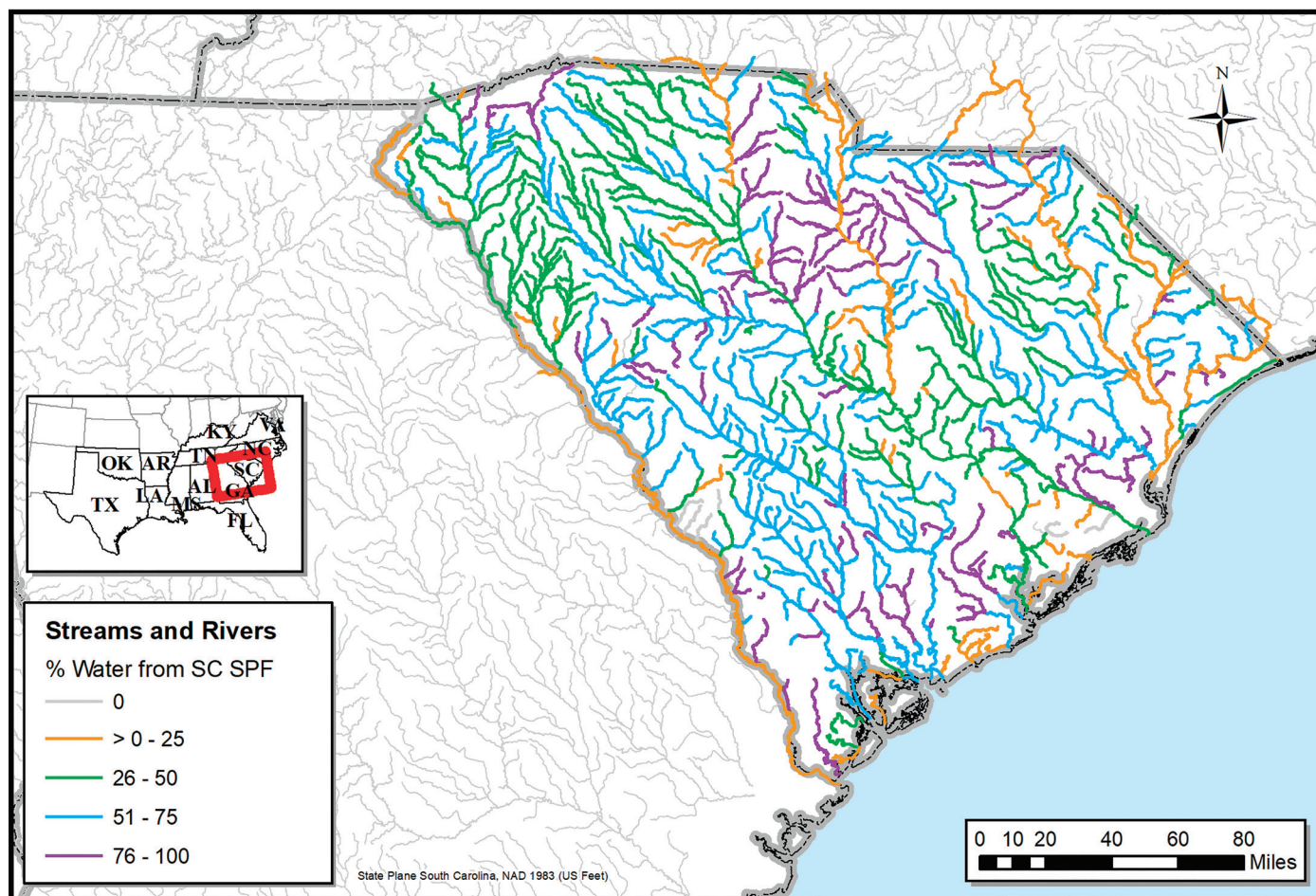


Figure A.SC.5—(B) South Carolina streams by percentage of South Carolina SPF water content.

(C) Intrastate Public Water System Intakes Receiving Water from South Carolina State and Private Forests

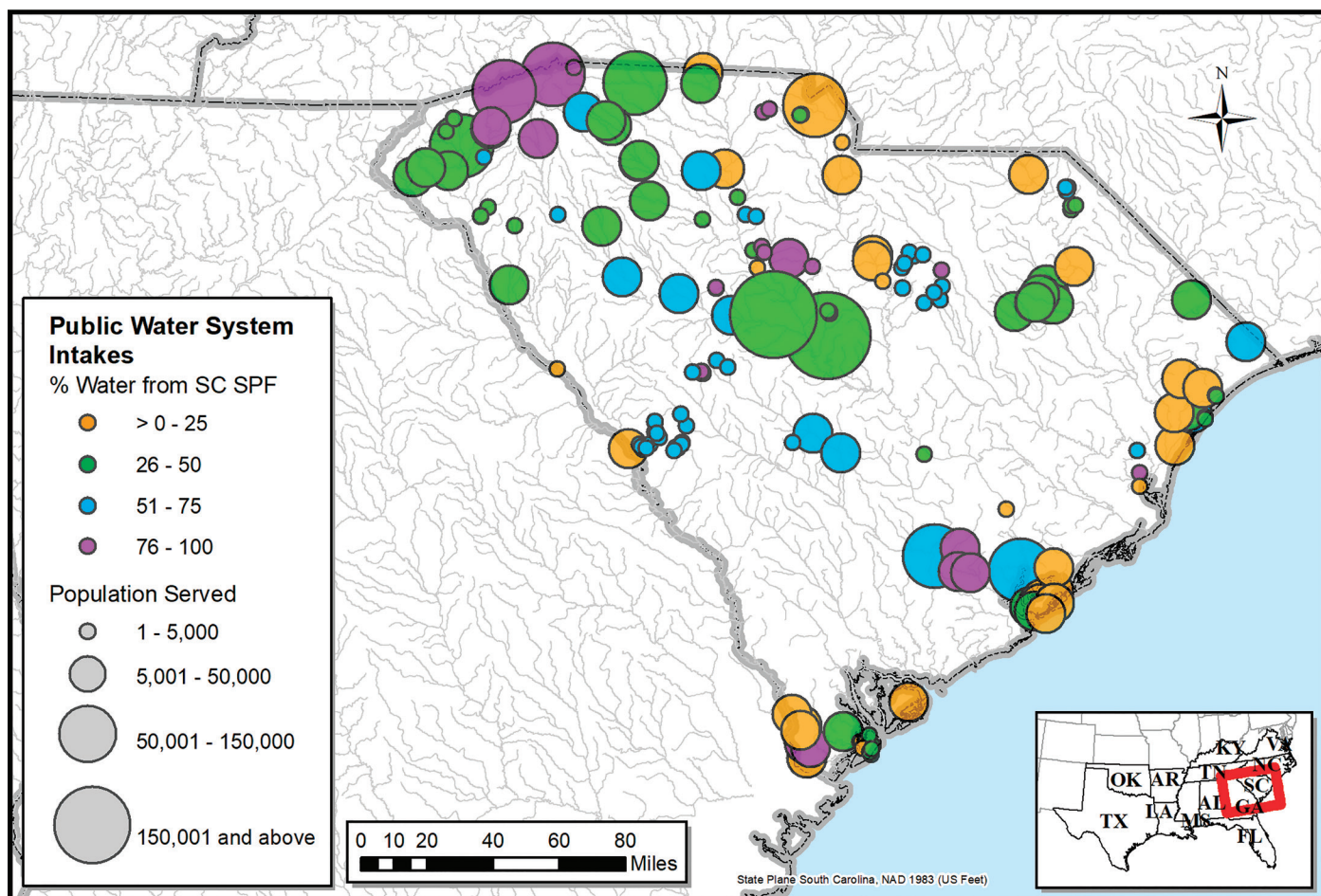


Figure A.SC.5—(C) Surface drinking water intakes within South Carolina by percentage of South Carolina SPF surface water available at intake (symbol color) and population served by each intake (symbol size). A total of 205 surface drinking water intakes within the State serve a population of 2,263,380 in 74 communities.

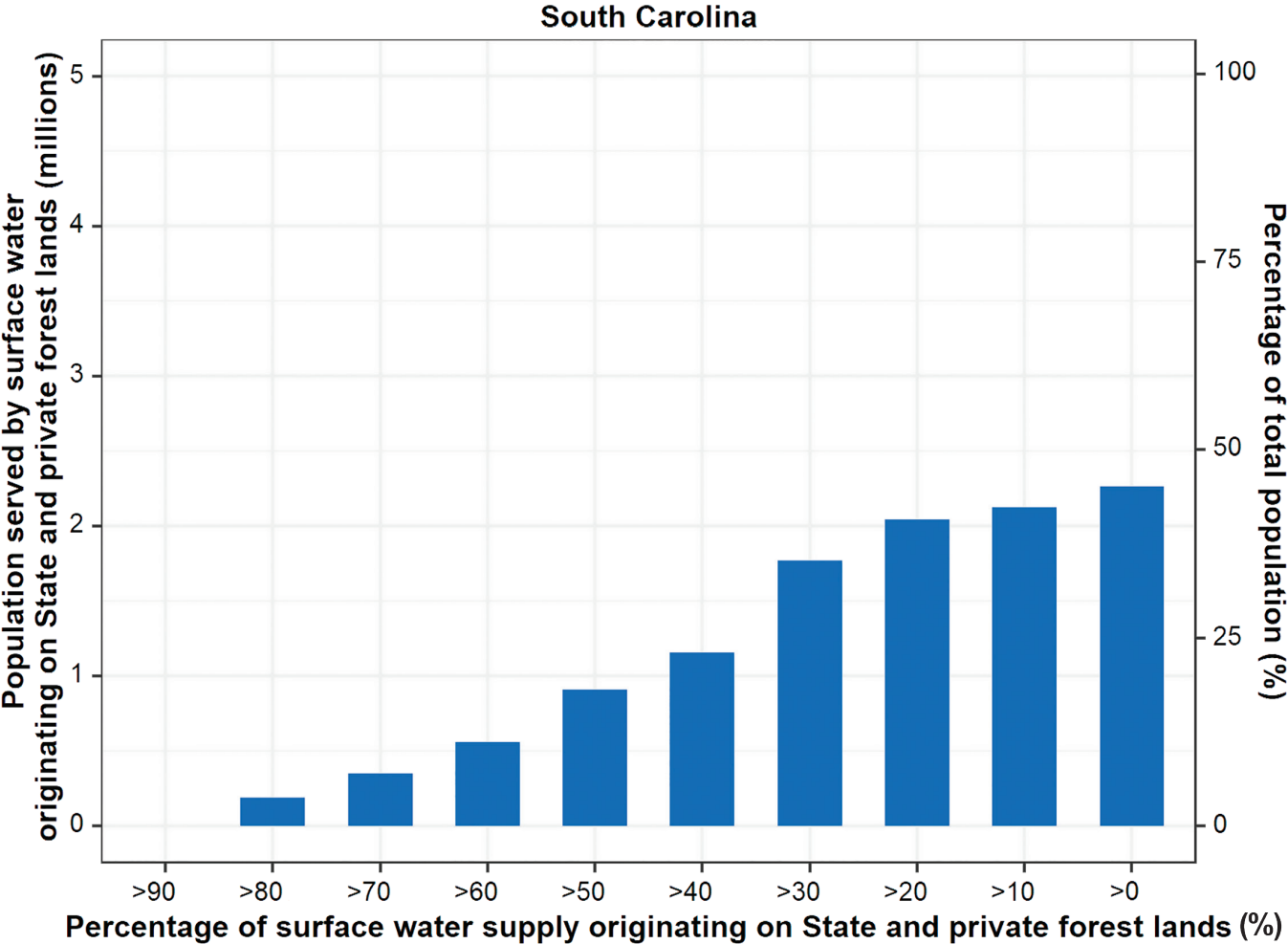


Figure A.SC.6—Cumulative frequency of population served according to percentage of water coming from South Carolina SPF lands.



*Public Water System Intakes Outside of South Carolina Receiving Water from South Carolina State and Private Forests*

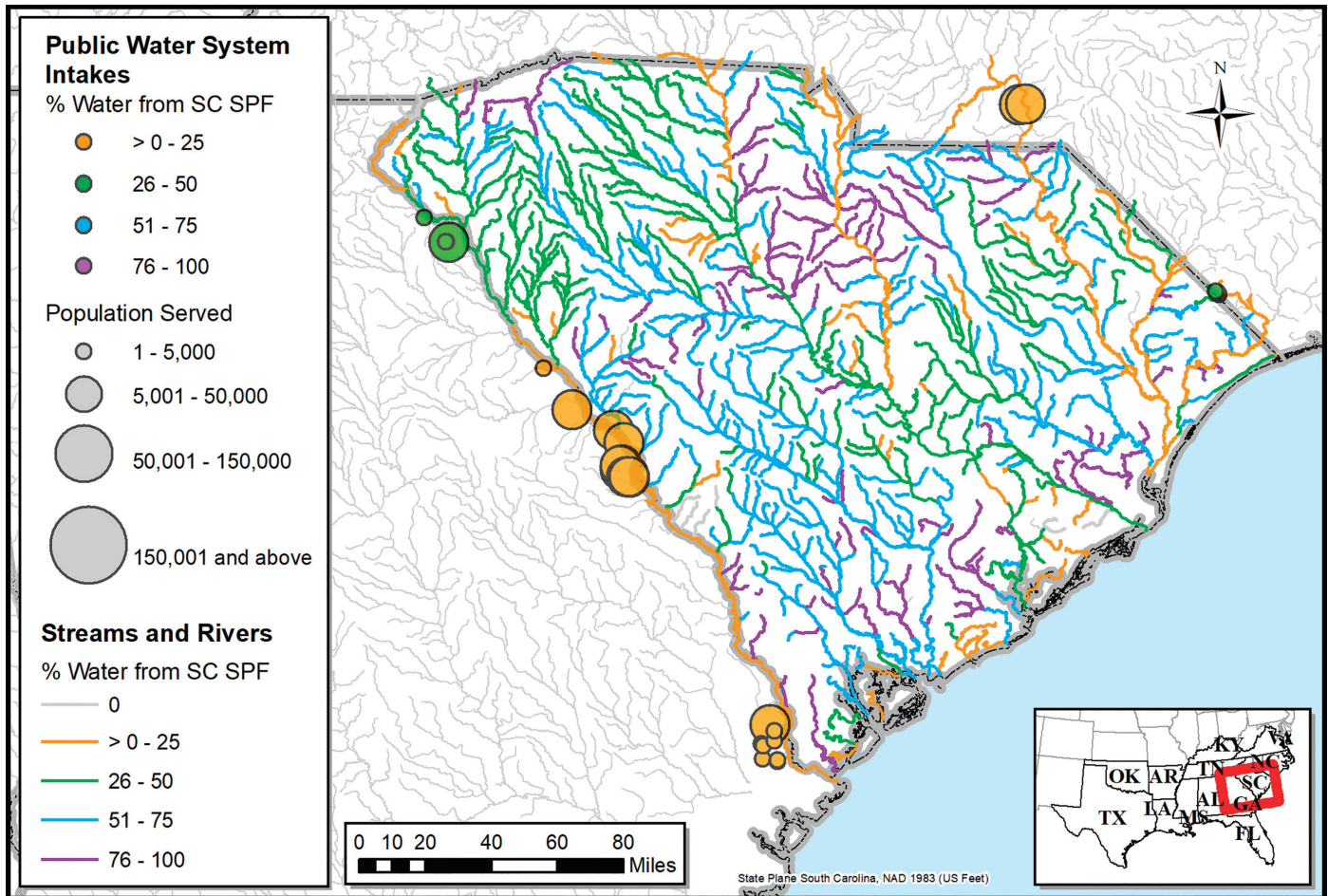


Figure A.SC.7—South Carolina streams by percentage of South Carolina SPF water content, surface drinking water intakes downstream of South Carolina by percentage of South Carolina SPF water content (symbol color), and population served by each of these external intakes (symbol size). A total of 42 surface drinking water intakes outside the State but carrying South Carolina SPF water serve a population of 313,158 in 13 communities.

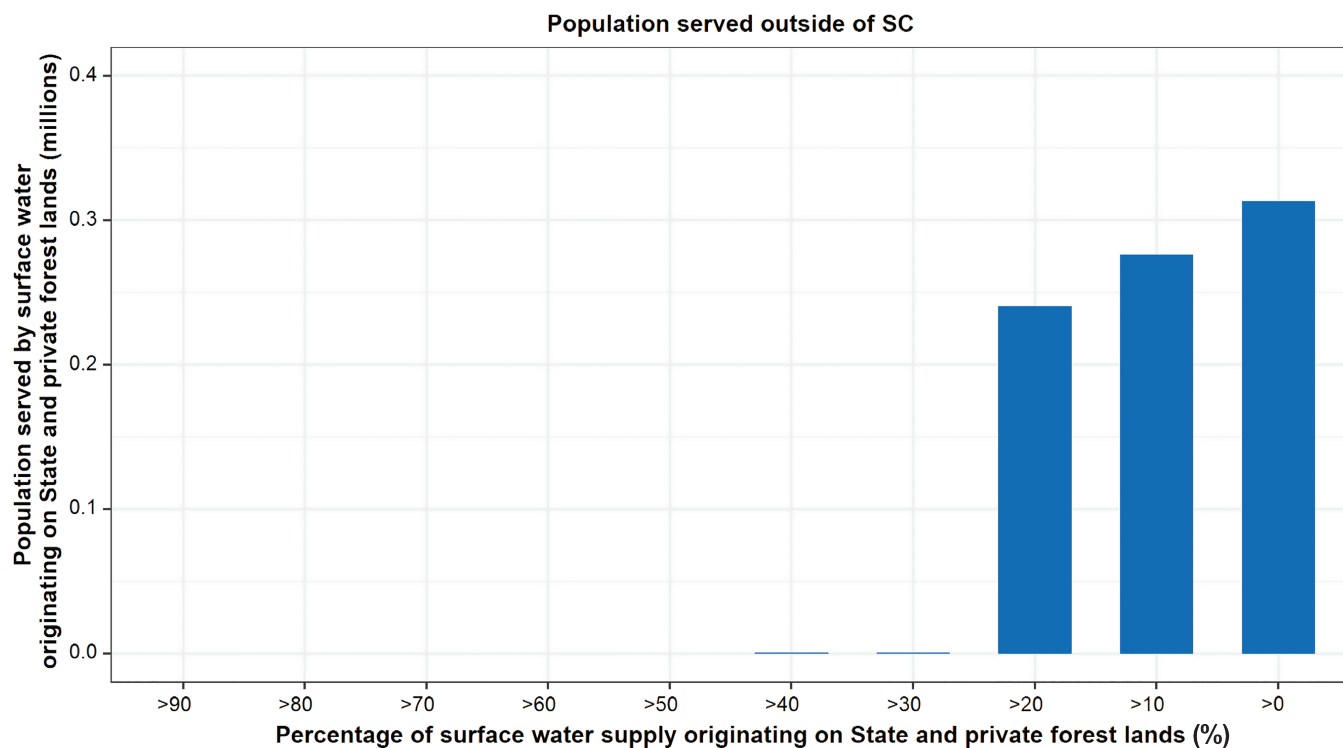


Figure A.SC.8—Cumulative frequency of non-South Carolina population served according to percentage of water coming from South Carolina SPF lands.

*Multi-Intake Public Water Systems (Aggregated to Single Symbol)  
Receiving Water from South Carolina State and Private Forests*

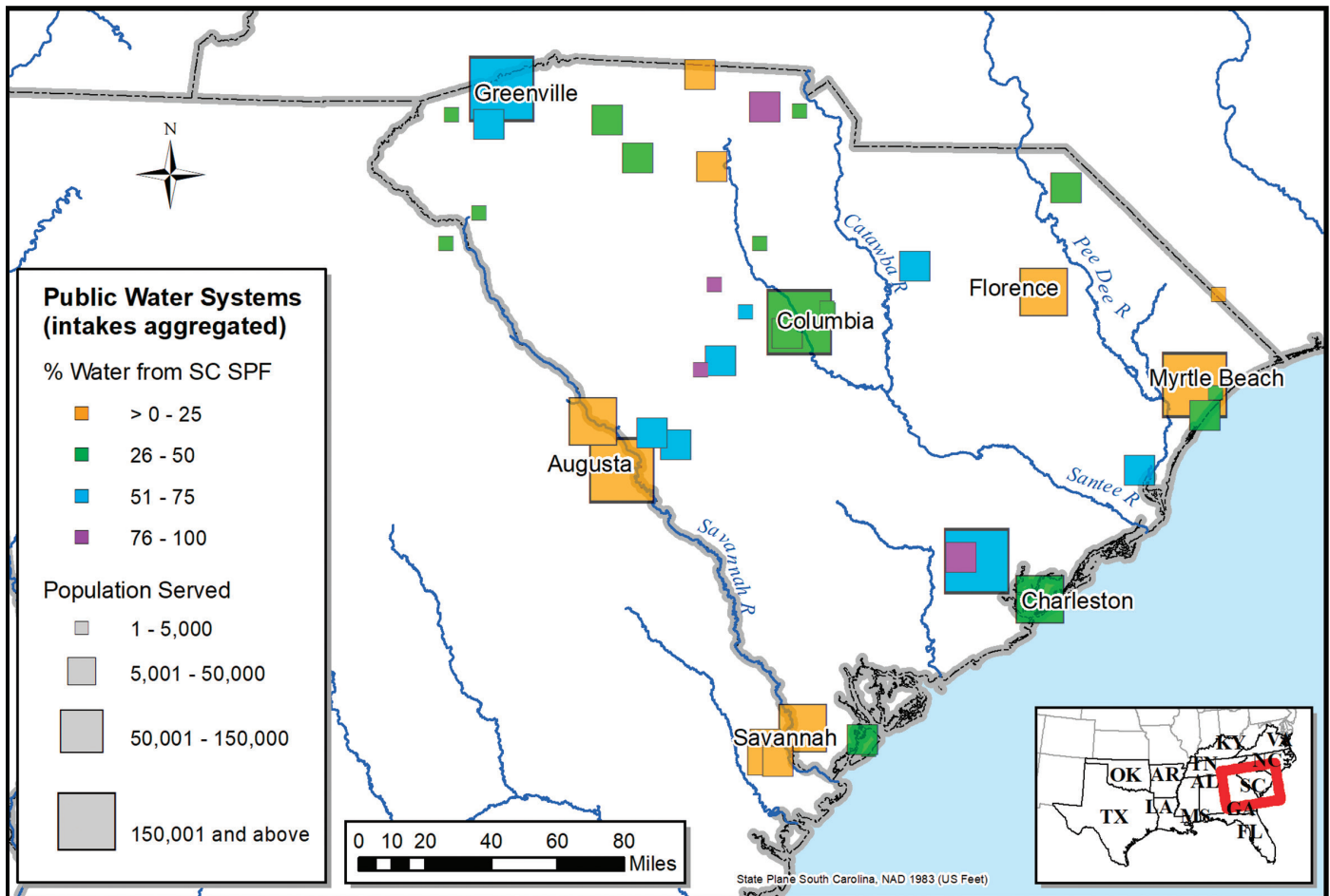


Figure A.SC.9—Multi-intake public water systems aggregated to single data point. Symbol color and size represent values for an entire municipal or corporate water supply system rather than values for individual surface drinking water intakes. Systems with no more than a single surface drinking water intake are not represented on this map.

## Columbia-Lake Wateree Detail

*Streams and Public Water System Intakes in Columbia-Lake Wateree, SC, Area  
Receiving Water from South Carolina State and Private Forests*

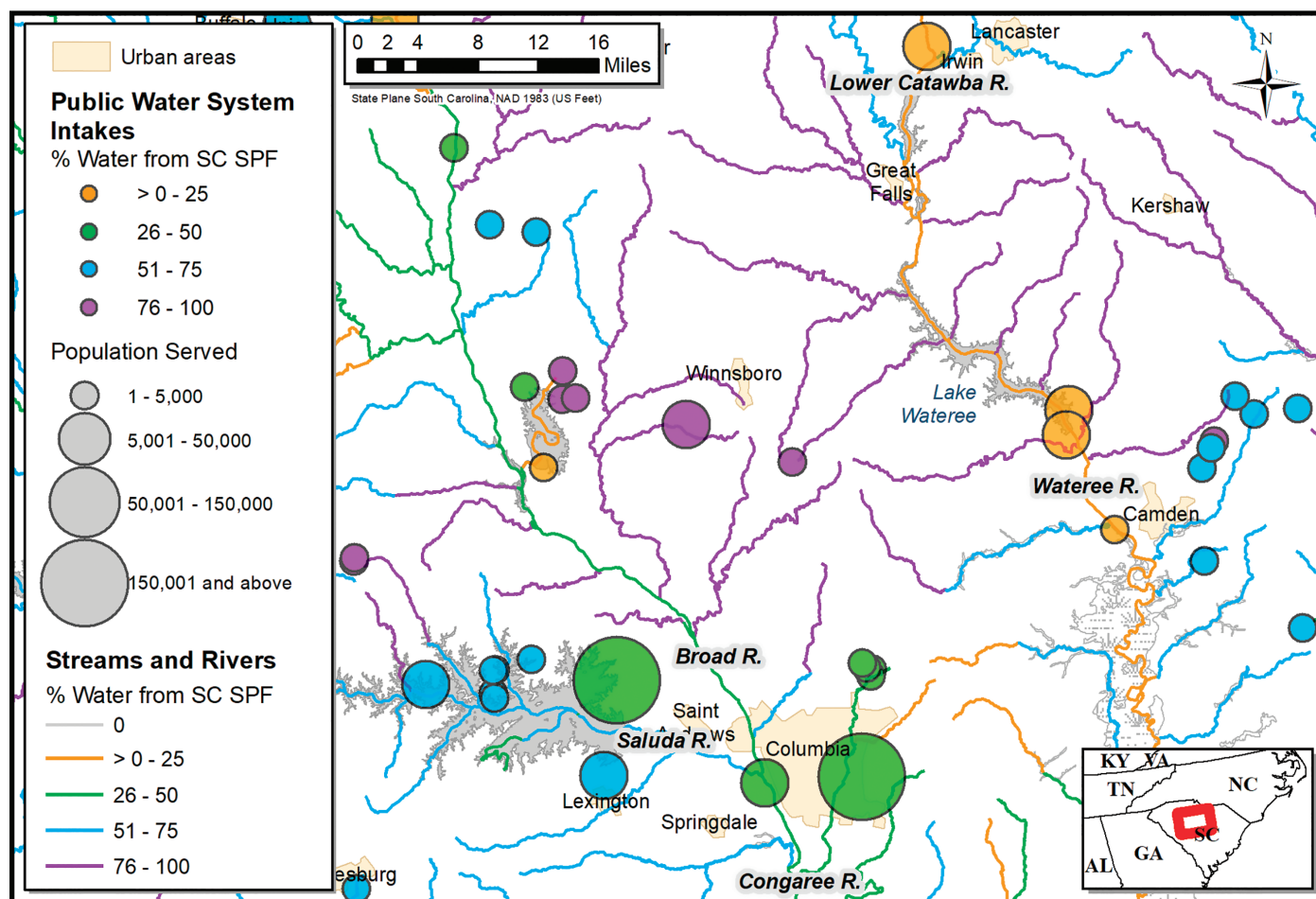


Figure A.SC.10—Local-scale detail showing percentage of water from South Carolina SPF for streams and surface drinking water intakes around Columbia, SC, and Lake Wateree.



## Greenville, SC, Case Study

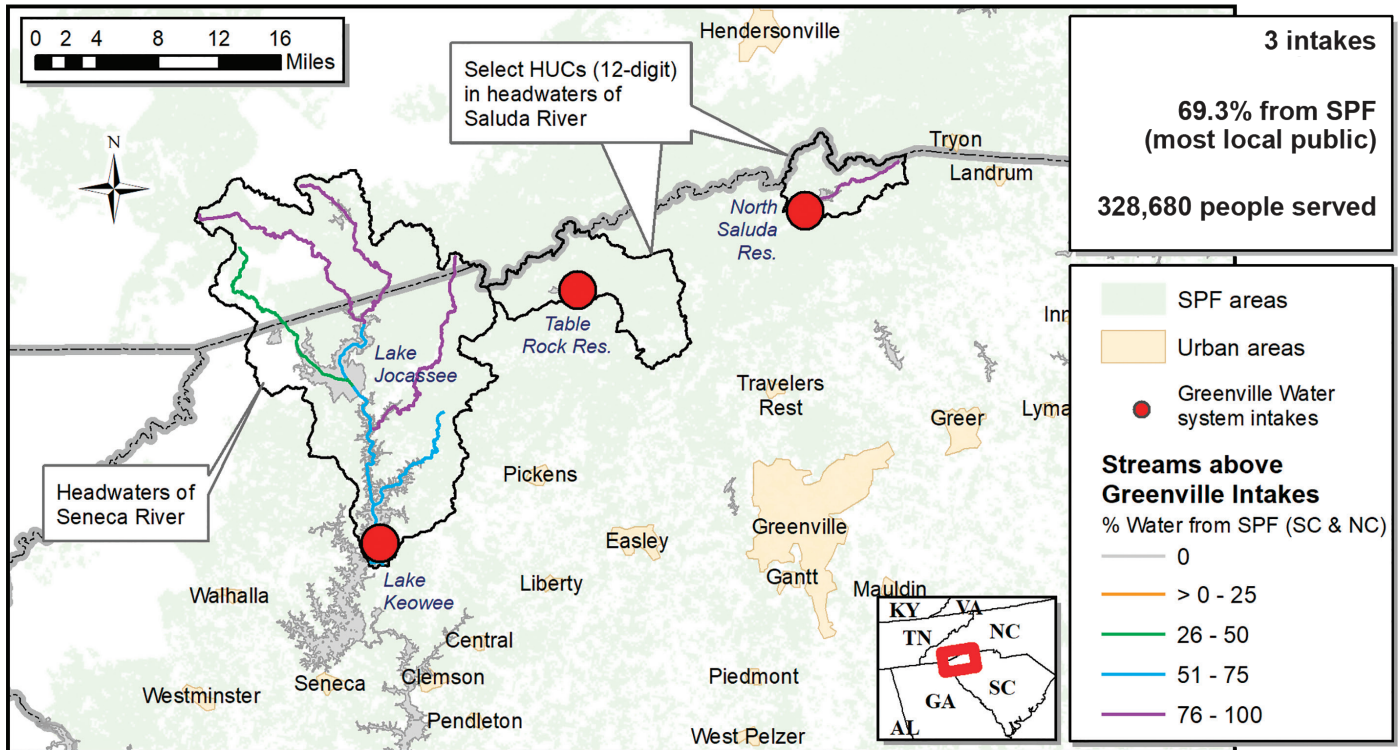


Figure A.SC.11—Case study of the Greenville Water public water supply system, Greenville, SC, illustrating SPF water in streams supplying the three surface drinking water intakes. When this water reaches the intakes, 69.3 percent of it comes from SPF lands. The largest ownership category in these specific SPF lands is local public.

**Table B.SC.1—Public water system intakes receiving water from State and private forest land in South Carolina**

Intake ID	Public water system name	Intake number for system	State	Population served by intake	Total volume of surface water available to intake	Total surface water from State and private forest lands
					(million m <sup>3</sup> yr <sup>-1</sup> )	(percent)
1	ABBEVILLE CITY OF (0110001)		SC	5,362	292	40.4
2	AIKEN CITY OF (0210001)	1 of 11	SC	3,845	79	66.7
3	AIKEN CITY OF (0210001)	2 of 11	SC	3,845	79	66.7
4	AIKEN CITY OF (0210001)	3 of 11	SC	3,845	43	63
5	AIKEN CITY OF (0210001)	4 of 11	SC	3,845	43	63
6	AIKEN CITY OF (0210001)	5 of 11	SC	3,845	43	63
7	AIKEN CITY OF (0210001)	6 of 11	SC	3,845	43	63
8	AIKEN CITY OF (0210001)	7 of 11	SC	3,845	88	58.1
9	AIKEN CITY OF (0210001)	8 of 11	SC	3,845	88	58.1
10	AIKEN CITY OF (0210001)	9 of 11	SC	3,845	38	56
11	AIKEN CITY OF (0210001)	10 of 11	SC	3,845	38	56
12	AIKEN CITY OF (0210001)	11 of 11	SC	3,845	38	56
13	AMICKS FERRY WTR SYSTEM (3250077)	1 of 4	SC	914	20	65.2
14	AMICKS FERRY WTR SYSTEM (3250077)	2 of 4	SC	914	20	65.2
15	AMICKS FERRY WTR SYSTEM (3250077)	3 of 4	SC	914	2388	59.7
16	AMICKS FERRY WTR SYSTEM (3250077)	4 of 4	SC	914	2388	59.7
17	ANDERSON REGIONAL JOINT WS (SC0420011)		SC	25	1665	46.9
18	BATESBURG LEESVILLE DPW (3210002)	1 of 2	SC	2,970	38	72.8
19	BATESBURG LEESVILLE DPW (3210002)	2 of 2	SC	2,970	44	71.4
20	BELTON-HONEA PATH WA (0410011)		SC	2,087	820	67.5
21	BENNETTSVILLE CITY OF (SC3410001)	1 of 9	SC	1,008	52	55.7
22	BENNETTSVILLE CITY OF (SC3410001)	2 of 9	SC	1,008	52	55.7
23	BENNETTSVILLE CITY OF (SC3410001)	3 of 9	SC	1,008	52	55.7
24	BENNETTSVILLE CITY OF (SC3410001)	4 of 9	SC	1,008	52	55.7
25	BENNETTSVILLE CITY OF (SC3410001)	5 of 9	SC	1,008	52	55.7
26	BENNETTSVILLE CITY OF (SC3410001)	6 of 9	SC	1,008	52	55.7
27	BENNETTSVILLE CITY OF (SC3410001)	7 of 9	SC	1,008	92	40
28	BENNETTSVILLE CITY OF (SC3410001)	8 of 9	SC	1,008	34	32.9
29	BENNETTSVILLE CITY OF (SC3410001)	9 of 9	SC	1,008	34	32.9
30	BJW&SA (0720003)	1 of 9	SC	12,693	168	77.6
31	BJW&SA (0720003)	2 of 9	SC	12,693	168	77.6
32	BJW&SA (0720003)	3 of 9	SC	12,693	61	37
33	BJW&SA (0720003)	4 of 9	SC	12,693	10 594	22.4
34	BJW&SA (0720003)	5 of 9	SC	12,693	10 594	22.4
35	BJW&SA (0720003)	6 of 9	SC	12,693	10 782	22
36	BJW&SA (0720003)	7 of 9	SC	12,693	10 782	22
37	BJW&SA (0720003)	8 of 9	SC	12,693	36	19.3
38	BJW&SA (0720003)	9 of 9	SC	12,693	18	8.2
39	BREEZY HILL W/D (0220006)	1 of 13	SC	1,054	60	66.4
40	BREEZY HILL W/D (0220006)	2 of 13	SC	1,054	60	66.4
41	BREEZY HILL W/D (0220006)	3 of 13	SC	1,054	169	66
42	BREEZY HILL W/D (0220006)	4 of 13	SC	1,054	169	66
43	BREEZY HILL W/D (0220006)	5 of 13	SC	1,054	96	65.8
44	BREEZY HILL W/D (0220006)	6 of 13	SC	1,054	96	65.8
45	BREEZY HILL W/D (0220006)	7 of 13	SC	1,054	46	64.9
46	BREEZY HILL W/D (0220006)	8 of 13	SC	1,054	46	64.9

(continued)



**Table B.SC.1 (continued)—Public water system intakes receiving water from State and private forest land in South Carolina**

Intake ID	Public water system name	Intake number for system	State	Population served by intake	Total volume of surface water available to intake	Total surface water from State and private forest lands
					(million m <sup>3</sup> yr <sup>-1</sup> )	(percent)
47	BREEZY HILL W/D (0220006)	9 of 13	SC	1,054	46	64.9
48	BREEZY HILL W/D (0220006)	10 of 13	SC	1,054	46	64.9
49	BREEZY HILL W/D (0220006)	11 of 13	SC	1,054	46	64.9
50	BREEZY HILL W/D (0220006)	12 of 13	SC	1,054	46	64.9
51	BREEZY HILL W/D (0220006)	13 of 13	SC	1,054	46	64.9
52	BROAD CREEK PSD (0720009)	1 of 3	SC	1,161	24	34.6
53	BROAD CREEK PSD (0720009)	2 of 3	SC	1,161	24	34.6
54	BROAD CREEK PSD (0720009)	3 of 3	SC	1,161	24	34.6
55	CAMDEN CITY OF (2810001)		SC	13,616	4769	15.8
56	CARLISLE CONE MILLS (4430003)		SC	125	3292	25.4
57	CASSATT WTR KERSHAW-LEE CO RWA	1 of 12	SC	2,074	13	78.3
58	CASSATT WTR KERSHAW-LEE CO RWA	2 of 12	SC	2,074	28	76.6
59	CASSATT WTR KERSHAW-LEE CO RWA	3 of 12	SC	2,074	25	74.1
60	CASSATT WTR KERSHAW-LEE CO RWA	4 of 12	SC	2,074	25	74.1
61	CASSATT WTR KERSHAW-LEE CO RWA	5 of 12	SC	2,074	25	74.1
62	CASSATT WTR KERSHAW-LEE CO RWA	6 of 12	SC	2,074	25	74.1
63	CASSATT WTR KERSHAW-LEE CO RWA	7 of 12	SC	2,074	54	72.5
64	CASSATT WTR KERSHAW-LEE CO RWA	8 of 12	SC	2,074	40	70.6
65	CASSATT WTR KERSHAW-LEE CO RWA	9 of 12	SC	2,074	12	69
66	CASSATT WTR KERSHAW-LEE CO RWA	10 of 12	SC	2,074	104	62.3
67	CASSATT WTR KERSHAW-LEE CO RWA	11 of 12	SC	2,074	19	55.6
68	CASSATT WTR KERSHAW-LEE CO RWA	12 of 12	SC	2,074	19	55.6
69	CATAWBA RIVER WSP (2920002)		SC	25	4000	4.8
70	CAYCE CITY OF (3210003)		SC	17,360	596	58.3
71	CHARLESTON WATER SYSTEM (1010001)	1 of 2	SC	117,167	75	64.7
72	CHARLESTON WATER SYSTEM (1010001)	2 of 2	SC	117,167	2508	59.9
73	CHERAW TOWN OF (1310001)		SC	6,595	7221	3.8
74	CHESTER METROPOLITAN DISTRICT (1220002)		SC	12,731	4552	12.5
75	CLINTON CITY OF (3010002)		SC	9,222	418	41
76	COLUMBIA CITY OF (4010001)	1 of 2	SC	152,129	17	38.3
77	COLUMBIA CITY OF (4010001)	2 of 2	SC	152,129	92	33.1
78	CWS BRIDGEWATER (0450033)	1 of 2	SC	119	201	36.2
79	CWS BRIDGEWATER (0450033)	2 of 2	SC	119	201	36.2
80	CWS CHARLESWOOD S/D (4050008)	1 of 3	SC	170	27	48.8
81	CWS CHARLESWOOD S/D (4050008)	2 of 3	SC	170	27	48.8
82	CWS CHARLESWOOD S/D (4050008)	3 of 3	SC	170	27	48.8
83	CWS COUNTRY OAKS (4650020)	1 of 2	SC	181	29	38.8
84	CWS COUNTRY OAKS (4650020)	2 of 2	SC	181	29	38.8
85	CWS FARROWOOD ESTATES (4050012)	1 of 2	SC	169	27	48.8
86	CWS FARROWOOD ESTATES (4050012)	2 of 2	SC	169	27	48.8
87	CWS INDIAN COVE S/D (3250020)		SC	92	2388	59.7
88	CWS NEVITT FOREST (0450007)		SC	878	50	34.4
89	DCWA KNIGHTSVILLE (1820001)	1 of 4	SC	5,531	114	84.3
90	DCWA KNIGHTSVILLE (1820001)	2 of 4	SC	5,531	173	82.5
91	DCWA KNIGHTSVILLE (1820001)	3 of 4	SC	5,531	173	82.5

(continued)

**Table B.SC.1 (continued)—Public water system intakes receiving water from State and private forest land in South Carolina**

Intake ID	Public water system name	Intake number for system	State	Population served by intake	Total volume of surface water available to intake	Total surface water from State and private forest lands
					(million m <sup>3</sup> yr <sup>-1</sup> )	(percent)
92	DCWA KNIGHTSVILLE (1820001)	4 of 4	SC	5,531	161	82.3
93	EASLEY CENTRAL W/D #1 (3920001)		SC	3,149	214	59
94	EASLEY COMBINED UTIL (3910002)		SC	29,668	482	82.6
95	FLORENCE CITY OF (2110001)	1 of 13	SC	5,507	45	36.8
96	FLORENCE CITY OF (2110001)	2 of 13	SC	5,507	45	36.8
97	FLORENCE CITY OF (2110001)	3 of 13	SC	5,507	45	36.8
98	FLORENCE CITY OF (2110001)	4 of 13	SC	5,507	45	36.8
99	FLORENCE CITY OF (2110001)	5 of 13	SC	5,507	45	36.8
100	FLORENCE CITY OF (2110001)	6 of 13	SC	5,507	109	34.4
101	FLORENCE CITY OF (2110001)	7 of 13	SC	5,507	109	34.4
102	FLORENCE CITY OF (2110001)	8 of 13	SC	5,507	109	34.4
103	FLORENCE CITY OF (2110001)	9 of 13	SC	5,507	109	34.4
104	FLORENCE CITY OF (2110001)	10 of 13	SC	5,507	109	34.4
105	FLORENCE CITY OF (2110001)	11 of 13	SC	5,507	29	30.5
106	FLORENCE CITY OF (2110001)	12 of 13	SC	5,507	48	27.7
107	FLORENCE CITY OF (2110001)	13 of 13	SC	5,507	7654	6.8
108	GAFFNEY BPW (1110001)	1 of 2	SC	10,152	29	32.9
109	GAFFNEY BPW (1110001)	2 of 2	SC	10,152	1645	2.9
110	GCWSD WACCAMAW NECK (2220010)		SC	34,367	16 846	24
111	GEORGETOWN CITY OF (2210001)	1 of 3	SC	3,082	157	76
112	GEORGETOWN CITY OF (2210001)	2 of 3	SC	3,082	1830	57.8
113	GEORGETOWN CITY OF (2210001)	3 of 3	SC	3,082	89	24.5
114	GREENVILLE WATER (2310001)	1 of 3	SC	109,560	184	88.6
115	GREENVILLE WATER (2310001)	2 of 3	SC	109,560	50	77.5
116	GREENVILLE WATER (2310001)	3 of 3	SC	109,560	774	45.4
117	GREENWOOD CPW (2410001)		SC	45,523	1361	58.3
118	GREER CPW (2310005)		SC	41,181	98	58.3
119	GSW&SA-MYRTLE BEACH (SC2620009)	1 of 3	SC	9	67	46.5
120	GSW&SA-MYRTLE BEACH (SC2620009)	2 of 3	SC	9	67	46.5
121	GSW&SA-MYRTLE BEACH (SC2620009)	3 of 3	SC	9	67	46.5
122	GSW&SA (2620004)	1 of 9	SC	18,341	62	69.2
123	GSW&SA (2620004)	2 of 9	SC	18,341	132	51.5
124	GSW&SA (2620004)	3 of 9	SC	18,341	70	45.9
125	GSW&SA (2620004)	4 of 9	SC	18,341	1795	25.6
126	GSW&SA (2620004)	5 of 9	SC	18,341	1612	22.6
127	GSW&SA (2620004)	6 of 9	SC	18,341	1612	22.6
128	GSW&SA (2620004)	7 of 9	SC	18,341	1575	21.7
129	GSW&SA (2620004)	8 of 9	SC	18,341	1575	21.7
130	GSW&SA (2620004)	9 of 9	SC	18,341	13 070	18.5
131	HILTON HEAD PSD 1 (0720006)	1 of 8	SC	3,011	123	36.6
132	HILTON HEAD PSD 1 (0720006)	2 of 8	SC	3,011	24	34.6
133	HILTON HEAD PSD 1 (0720006)	3 of 8	SC	3,011	92	22.5
134	HILTON HEAD PSD 1 (0720006)	4 of 8	SC	3,011	92	22.5
135	HILTON HEAD PSD 1 (0720006)	5 of 8	SC	3,011	92	22.5
136	HILTON HEAD PSD 1 (0720006)	6 of 8	SC	3,011	92	22.5

(continued)

**Table B.SC.1 (continued)—Public water system intakes receiving water from State and private forest land in South Carolina**

Intake ID	Public water system name	Intake number for system	State	Population served by intake	Total volume of surface water available to intake	Total surface water from State and private forest lands
					(million m <sup>3</sup> yr <sup>-1</sup> )	(percent)
137	HILTON HEAD PSD 1 (0720006)	7 of 8	SC	3,011	92	22.5
138	HILTON HEAD PSD 1 (0720006)	8 of 8	SC	3,011	92	22.5
139	INVISTA (SC2830001)		SC	1,400	5077	19.4
140	ISLE OF PALMS W/S COMM (1010004)		SC	8,442	16	3.1
141	JENKINSVILLE WATER COMPANY (2020001)	1 of 6	SC	418	132	86.1
142	JENKINSVILLE WATER COMPANY (2020001)	2 of 6	SC	418	132	86.1
143	JENKINSVILLE WATER COMPANY (2020001)	3 of 6	SC	418	132	86.1
144	JENKINSVILLE WATER COMPANY (2020001)	4 of 6	SC	418	34	57.2
145	JENKINSVILLE WATER COMPANY (2020001)	5 of 6	SC	418	34	57.2
146	JENKINSVILLE WATER COMPANY (2020001)	6 of 6	SC	418	5012	31.7
147	LAKE MARION REGIONAL WATER PLT (3820003)		SC	25	14 431	35.3
148	LAURENS CPW (3010001)		SC	13,825	120	44.6
149	LUGOFF ELGIN WATER AUTH (2820001)		SC	19,671	4769	15.8
150	MCCORMICK CPW (3510001)		SC	2,013	6066	19
151	MONETTA TOWN OF (0210008)	1 of 9	SC	125	38	78.2
152	MONETTA TOWN OF (0210008)	2 of 9	SC	125	38	78.2
153	MONETTA TOWN OF (0210008)	3 of 9	SC	125	38	78.2
154	MONETTA TOWN OF (0210008)	4 of 9	SC	125	38	78.2
155	MONETTA TOWN OF (0210008)	5 of 9	SC	125	38	78.2
156	MONETTA TOWN OF (0210008)	6 of 9	SC	125	38	78.2
157	MONETTA TOWN OF (0210008)	7 of 9	SC	125	38	78.2
158	MONETTA TOWN OF (0210008)	8 of 9	SC	125	38	78.2
159	MONETTA TOWN OF (0210008)	9 of 9	SC	125	39	69.2
160	MT PLEASANT WATER WORKS (1010002)	1 of 8	SC	10,266	826	31.5
161	MT PLEASANT WATER WORKS (1010002)	2 of 8	SC	10,266	826	31.5
162	MT PLEASANT WATER WORKS (1010002)	3 of 8	SC	10,266	52	21.4
163	MT PLEASANT WATER WORKS (1010002)	4 of 8	SC	10,266	108	21
164	MT PLEASANT WATER WORKS (1010002)	5 of 8	SC	10,266	108	21
165	MT PLEASANT WATER WORKS (1010002)	6 of 8	SC	10,266	56	6.3
166	MT PLEASANT WATER WORKS (1010002)	7 of 8	SC	10,266	56	6.3
167	MT PLEASANT WATER WORKS (1010002)	8 of 8	SC	10,266	16	3.1
168	NEWBERRY CITY OF (3610001)		SC	10,250	2195	60
169	NEWBERRY CO W&SA (3620002)		SC	9,825	2285	60.2
170	NORTH AUGUSTA CITY OF (0210003)		SC	27,127	8126	21.3
171	OCEAN LAKES LTD (2660048)	1 of 3	SC	2,074	15	28.5
172	OCEAN LAKES LTD (2660048)	2 of 3	SC	2,074	15	28.5
173	OCEAN LAKES LTD (2660048)	3 of 3	SC	2,074	15	28.5
174	ORANGEBURG DPU (3810001)		SC	49,906	1594	58.8
175	PICKENS WTP (3910001)	1 of 2	SC	5,436	50	81.1
176	PICKENS WTP (3910001)	2 of 2	SC	5,436	153	59.2
177	PROSPERITY TOWN OF (3610005)	1 of 2	SC	566	54	76.9
178	PROSPERITY TOWN OF (3610005)	2 of 2	SC	566	54	76.9
179	RIDGE SPRING TOWN OF (4110002)		SC	1,308	55	57
180	RIDGEWAY TOWN OF (2010002)		SC	950	26	90.1
181	ROCK HILL CITY OF (SC4610002)		SC	67,520	3378	2.4

(continued)

**Table B.SC.1 (continued)—Public water system intakes receiving water from State and private forest land in South Carolina**

Intake ID	Public water system name	Intake number for system	State	Population served by intake	Total volume of surface water available to intake	Total surface water from State and private forest lands
					(million m <sup>3</sup> yr <sup>-1</sup> )	(percent)
182	SALEM TOWN OF (3710001)	1 of 4	SC	570	131	49
183	SALEM TOWN OF (3710001)	2 of 4	SC	570	425	30.9
184	SALEM TOWN OF (3710001)	3 of 4	SC	570	425	30.9
185	SALEM TOWN OF (3710001)	4 of 4	SC	570	425	30.9
186	SANTEE COOPER REG WATER (0820008)		SC	25	117	20.7
187	SCE&G VC SUMMER NUCLEAR STA (2030004)		SC	1,000	15	23.9
188	SENECA CITY OF (3710002)		SC	33,374	81	48.6
189	SILVER SPRINGS W/D (3820002)		SC	2,536	12	63
190	SJWD MIDDLE TYGER WTP (4220006)	1 of 2	SC	23,790	195	39.7
191	SJWD MIDDLE TYGER WTP (4220006)	2 of 2	SC	23,790	195	39.7
192	SPARTANBURG WATER SYSTEM (4210001)		SC	130,929	309	34.1
193	SWS-LANDRUM WTP (4210003)		SC	2,011	50	77.5
194	UNION CITY OF (4410001)	1 of 2	SC	5,884	43	68.6
195	UNION CITY OF (4410001)	2 of 2	SC	5,884	3121	23
196	WALHALLA CITY OF (3710004)		SC	15,740	30	49.2
197	WEST COLUMBIA CITY OF (3210004)	1 of 2	SC	14,622	72	56.2
198	WEST COLUMBIA CITY OF (3210004)	2 of 2	SC	14,622	7949	43.1
199	WESTMINSTER CITY OF (3710003)		SC	7,582	175	33.1
200	WHITMIRE TOWN OF (3610004)		SC	2,256	583	39.6
201	WINNSBORO TOWN OF (2010001)		SC	7,888	14	84.4
202	WOODRUFF ROEBUCK W/D (4220007)	1 of 2	SC	12,642	434	43.5
203	WOODRUFF ROEBUCK W/D (4220007)	2 of 2	SC	12,642	221	40.2
204	YORK CITY OF (4610001)	1 of 2	SC	3,629	50	81.5
205	YORK CITY OF (4610001)	2 of 2	SC	3,629	50	81.5
206	AUGUSTA-RICHMOND CO WS	1 of 16	GA	9,715	8948	22.7
207	AUGUSTA-RICHMOND CO WS	2 of 16	GA	9,715	8948	22.7
208	AUGUSTA-RICHMOND CO WS	3 of 16	GA	9,715	8948	22.7
209	AUGUSTA-RICHMOND CO WS	4 of 16	GA	9,715	8948	22.7
210	AUGUSTA-RICHMOND CO WS	5 of 16	GA	9,715	8948	22.7
211	AUGUSTA-RICHMOND CO WS	6 of 16	GA	9,715	8948	22.7
212	AUGUSTA-RICHMOND CO WS	7 of 16	GA	9,715	8948	22.7
213	AUGUSTA-RICHMOND CO WS	8 of 16	GA	9,715	8948	22.7
214	AUGUSTA-RICHMOND CO WS	9 of 16	GA	9,715	8948	22.7
215	AUGUSTA-RICHMOND CO WS	10 of 16	GA	9,715	8948	22.7
216	AUGUSTA-RICHMOND CO WS	11 of 16	GA	9,715	8948	22.7
217	AUGUSTA-RICHMOND CO WS	12 of 16	GA	9,715	8948	22.7
218	AUGUSTA-RICHMOND CO WS	13 of 16	GA	9,715	8948	22.7
219	AUGUSTA-RICHMOND CO WS	14 of 16	GA	9,715	8948	22.7
220	AUGUSTA-RICHMOND CO WS	15 of 16	GA	9,715	8126	21.3
221	AUGUSTA-RICHMOND CO WS	16 of 16	GA	9,715	8126	21.3
222	COLUMBIA COUNTY	1 of 2	GA	33,989	8037	20.9
223	COLUMBIA COUNTY	2 of 2	GA	33,989	7335	18.4
224	EFFINGHAM COUNTY SURFACE WATER SYSTEM	1 of 6	GA	1,645	10 782	22
225	EFFINGHAM COUNTY SURFACE WATER SYSTEM	2 of 6	GA	1,645	10 782	22
226	EFFINGHAM COUNTY SURFACE WATER SYSTEM	3 of 6	GA	1,645	10 782	22

(continued)

**Table B.SC.1 (continued)—Public water system intakes receiving water from State and private forest land in South Carolina**

Intake ID	Public water system name	Intake number for system	State	Population served by intake	Total volume of surface water available to intake	Total surface water from State and private forest lands
					(million m <sup>3</sup> yr <sup>-1</sup> )	(percent)
227	EFFINGHAM COUNTY SURFACE WATER SYSTEM	4 of 6	GA	1,645	10 782	22
228	EFFINGHAM COUNTY SURFACE WATER SYSTEM	5 of 6	GA	1,645	10 782	22
229	EFFINGHAM COUNTY SURFACE WATER SYSTEM	6 of 6	GA	1,645	10 782	22
230	HARTWELL		GA	7,116	3507	27
231	LAVONIA		GA	4,095	3414	27.8
232	LINCOLNTON		GA	1,657	6066	19
233	POOLER	1 of 2	GA	4,238	10 782	22
234	POOLER	2 of 2	GA	4,238	10 782	22
235	RINCON		GA	9,880	10 594	22.4
236	SANDERS MOBILE HOME PARK	1 of 2	GA	117	3507	27
237	SANDERS MOBILE HOME PARK	2 of 2	GA	117	3507	27
238	SAVANNAH-I & D	1 of 4	GA	2,625	10 594	22.4
239	SAVANNAH-I & D	2 of 4	GA	2,625	10 782	22
240	SAVANNAH-I & D	3 of 4	GA	2,625	10 782	22
241	SAVANNAH-I & D	4 of 4	GA	2,625	10 782	22
242	ANSON COUNTY WATER SYSTEM		NC	13,380	6536	0.2
243	RICHMOND COUNTY WATER SYSTEM		NC	21,285	6536	0.2
244	TABOR CITY, TOWN OF	1 of 4	NC	816	70	45.9
245	TABOR CITY, TOWN OF	2 of 4	NC	816	192	9.7
246	TABOR CITY, TOWN OF	3 of 4	NC	816	192	9.7
247	TABOR CITY, TOWN OF	4 of 4	NC	816	192	9.7