

Contributions of State and private forest  
lands to surface drinking water supply:

# NORTH CAROLINA

---

**This file compiles State-specific excerpts from  
appendices A and B of the following report:**

Liu, Ning; Dobbs, G. Rebecca; Caldwell, Peter V.; Miniati, Chelcy Ford; Bolstad, Paul V.; Nelson, Stacy; Sun, Ge. 2020. Quantifying the role of State and private forest lands in providing surface drinking water supply for the Southern United States. Gen. Tech. Rep. SRS-248. Asheville, NC: U.S. Department of Agriculture Forest Service, Southern Research Station. 405 p. <https://doi.org/10.2737/SRS-GTR-248>.

**Appendix A**—Detailed information regarding forest ownership, water yield, surface drinking water intakes, and percent of water originating on State and private forest (SPF) lands in North Carolina.

**Table B.AL.1**—Public water system intakes receiving water from State and private forest land in North Carolina.

---

*[This page intentionally left blank]*

## STATE OF NORTH CAROLINA

### Summary

State and private forest (SPF) lands cover about 49.4 percent of North Carolina (figs. A.NC.1 and A.NC.2; table A.NC.1). About 45.5 percent of all North Carolina surface water originates on SPF lands (fig. A.NC.3). The majority of SPF land area is in, and surface water is from, family-owned forests, accounting for about 62.9 percent of the land coverage and 62.3 percent of surface water from SPF. Corporate-owned forests contribute 27.2 percent of surface water from SPF and account for 27.0 percent of land coverage. Average annual water yield in North Carolina is about 400 mm, with greater annual water yield in the western part of the State (> 800 mm) (fig. A.NC.4). North Carolina has a total of 484 surface drinking water intakes where at least some available water comes from SPF (fig. A.NC.5). About 56.9 percent of the total population of North Carolina is served by surface drinking water overall, and North Carolina SPF surface drinking water also serves about 56.9 percent of the State population, or 5.8 million people, to some degree. About 1.5 million people in North Carolina are getting more than half of their surface drinking water from SPF within the State

(fig. A.NC.6). State and private forest lands in North Carolina also supply water to 296 surface drinking water intakes in other States (Alabama, Georgia, Illinois, Indiana, Kentucky, Louisiana, Mississippi, Ohio, South Carolina, Tennessee, Virginia, and West Virginia) (fig. A.NC.7), which collectively serve about 5.2 million people in 182 communities (fig. A.NC.8). Many public water systems in North Carolina utilize more than one surface drinking water intake; these systems are shown (intakes aggregated) in figure A.NC.9 by population served (symbol size) and percentage of water from SPF lands in North Carolina (symbol color). The detail maps of Charlotte, the Sandhills towns, the Triad area, and the Triangle area (figs. A.NC.10–A.NC.13) add clarity on the hydrology, surface drinking water intakes, water originating on SPF lands, and population centers in areas where there is complex intersection between public water supply systems and population served. A case study (fig. A.NC.14) of the City of Durham public water supply system presents an example of the important role SPF lands play in providing water supply to a single community in North Carolina, where two surface drinking water intakes receive about 64.4 percent of their water from SPF and serve about 0.3 million people.

**Table A.NC.1—Land area by land cover and forest ownership type in North Carolina**

Land cover	Land area (km <sup>2</sup> )	Land area (acres)
Forest	77 971	19,267,272
Nonforest	55 759	13,778,301
Forest ownership type <sup>a</sup>	Land area (km <sup>2</sup> )	Land area (acres)
Federal (public)	11 662	2,881,771
Tribal (public)	206	51,002
State (public)	4355	1,076,227
Local (public)	1083	267,601
Corporate (private)	17 843	4,409,061
Family (private)	41 570	10,272,255
Other private	1252	309,355

<sup>a</sup> State and private forest land comprises State, local, corporate, family, and other private (the last two also referred to together as nonindustrial private forest, or NIPF). Corporate ownership lands include forest land owned by forest industry as well as other corporate entities such as Timber Investment Management Organizations and Real Estate Investment Trusts (TIMOs and REITs, respectively).

## North Carolina Forested Lands by Ownership

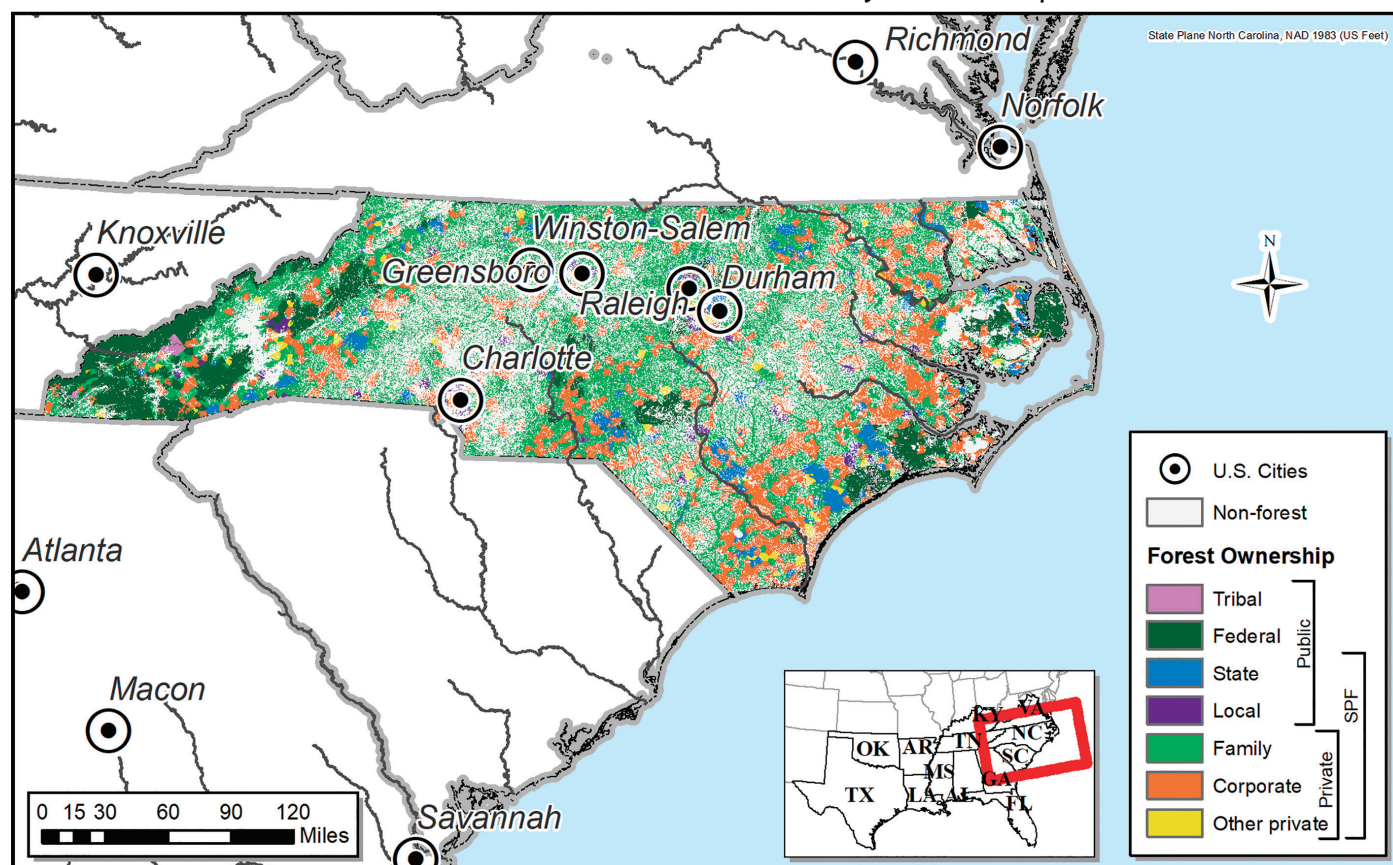


Figure A.NC.1—North Carolina nonforest land and forest lands by ownership, ca. 2014. Forest ownership data source: raster dataset by Hewes and others (2017); see report for more discussion of data derivation and accuracy.

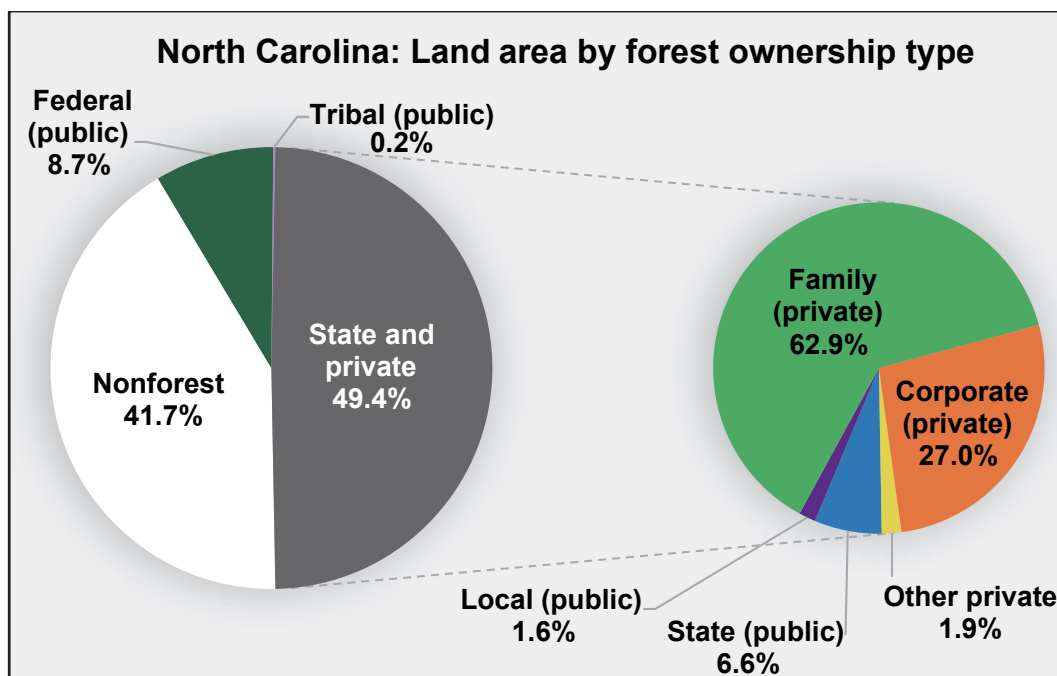


Figure A.NC.2—Land area percentages by forest ownership, ca. 2014. In the smaller circle, percentages represent portion of SPF total for each ownership category. Note: Due to rounding, percentages may not total exactly 100.

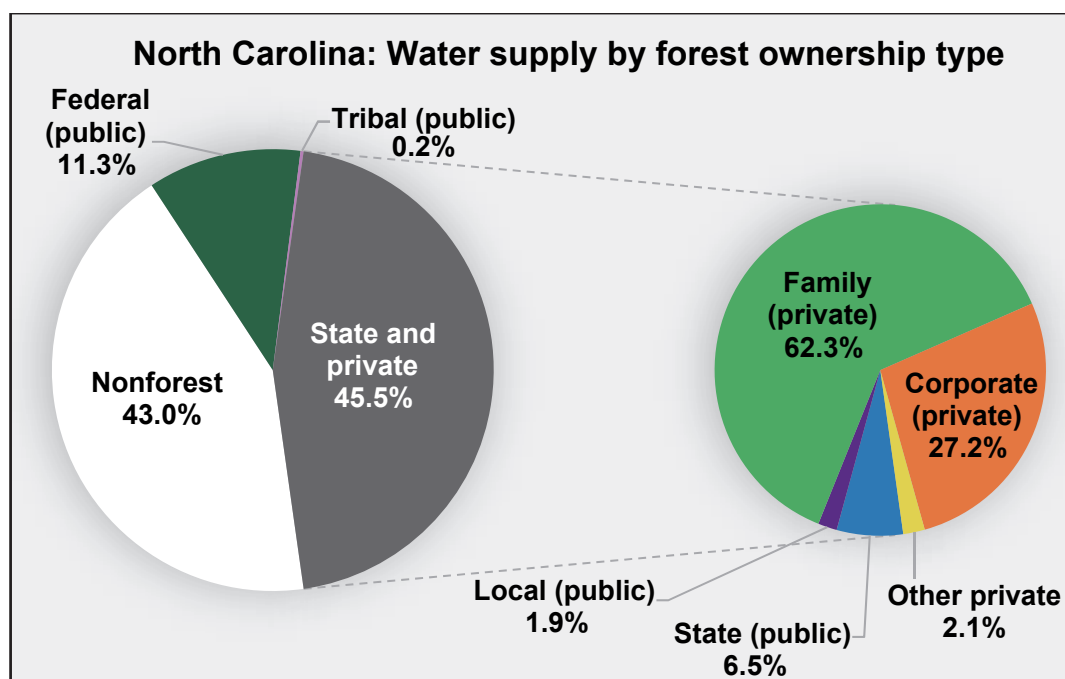


Figure A.NC.3—Percentage of North Carolina's water supply deriving from nonforest lands and forest lands of different ownership, ca. 2014. In the smaller circle, percentages represent portion of SPF total for each ownership category. Note: Due to rounding, percentages may not total exactly 100.

# North Carolina 2001-2010 Mean Annual Water Yield by 12-Digit Hydrologic Unit

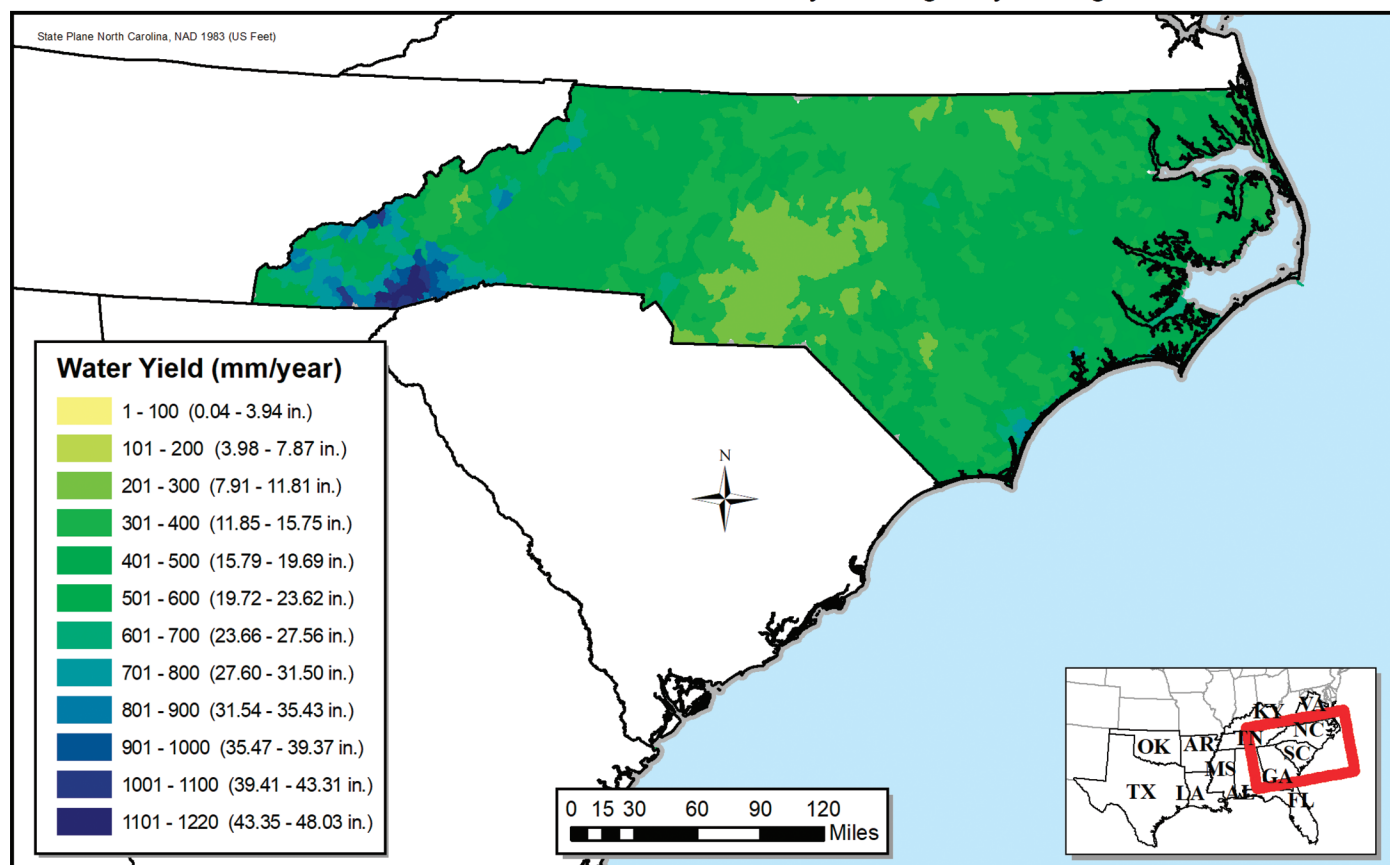


Figure A.NC.4—Estimated mean annual water yield by 12-digit hydrologic units in North Carolina, 2001–2010. Hydrologic Unit Codes (HUC) use number of digits to represent watersheds of different scales. A 12-digit HUC (HUC12) represents a small local watershed. For explanation of water yield and how it is derived, see report.

(A) Streams and Intrastate Public Water System Intakes Receiving Water from North Carolina State and Private Forests

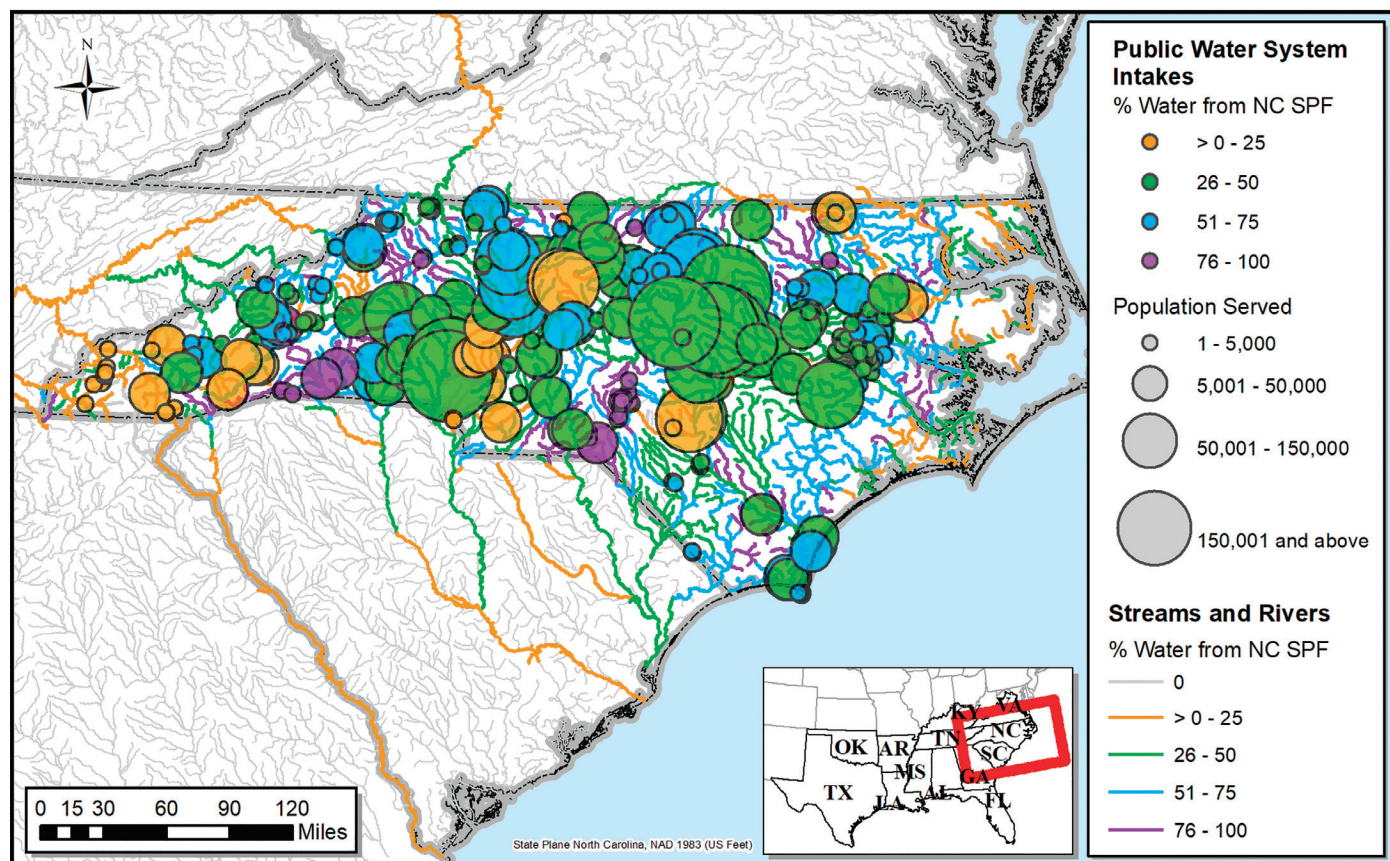


Figure A.NC.5—(A) North Carolina streams by percentage of North Carolina SPF water content, surface drinking water intakes within North Carolina by percentage of North Carolina SPF surface water available at intake (symbol color), and population served by each intake (symbol size). A total of 484 surface drinking water intakes within the State serve a population of 5,833,733 in 172 communities. Note: See figures A.NC.5 parts B and C on separate pages for streams and intakes only.

(B) Streams Receiving  
Water from North Carolina State and Private Forests

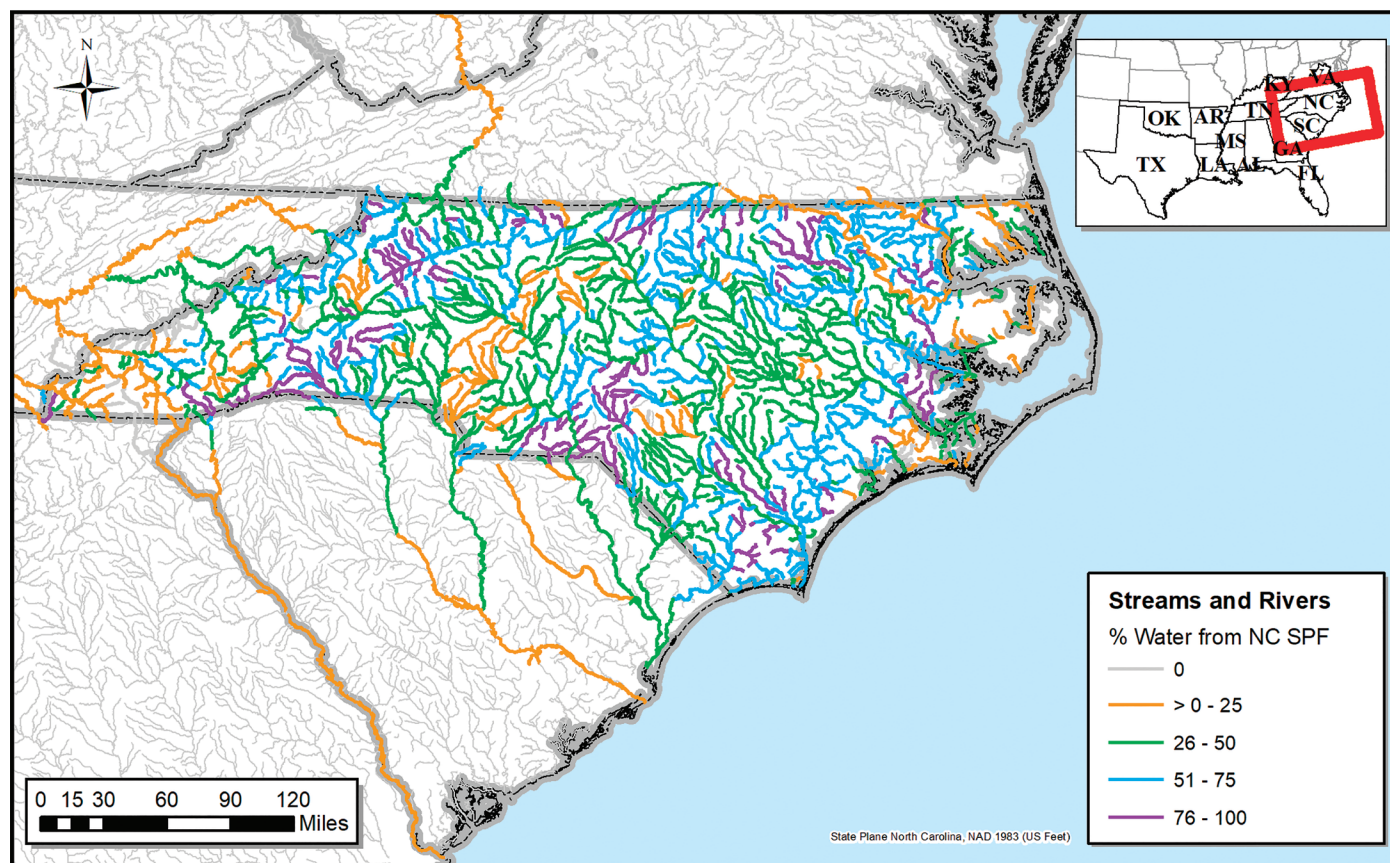


Figure A.NC.5—(B) North Carolina streams by percentage of North Carolina SPF water content.

(C) Intrastate Public Water System Intakes Receiving Water from North Carolina State and Private Forests

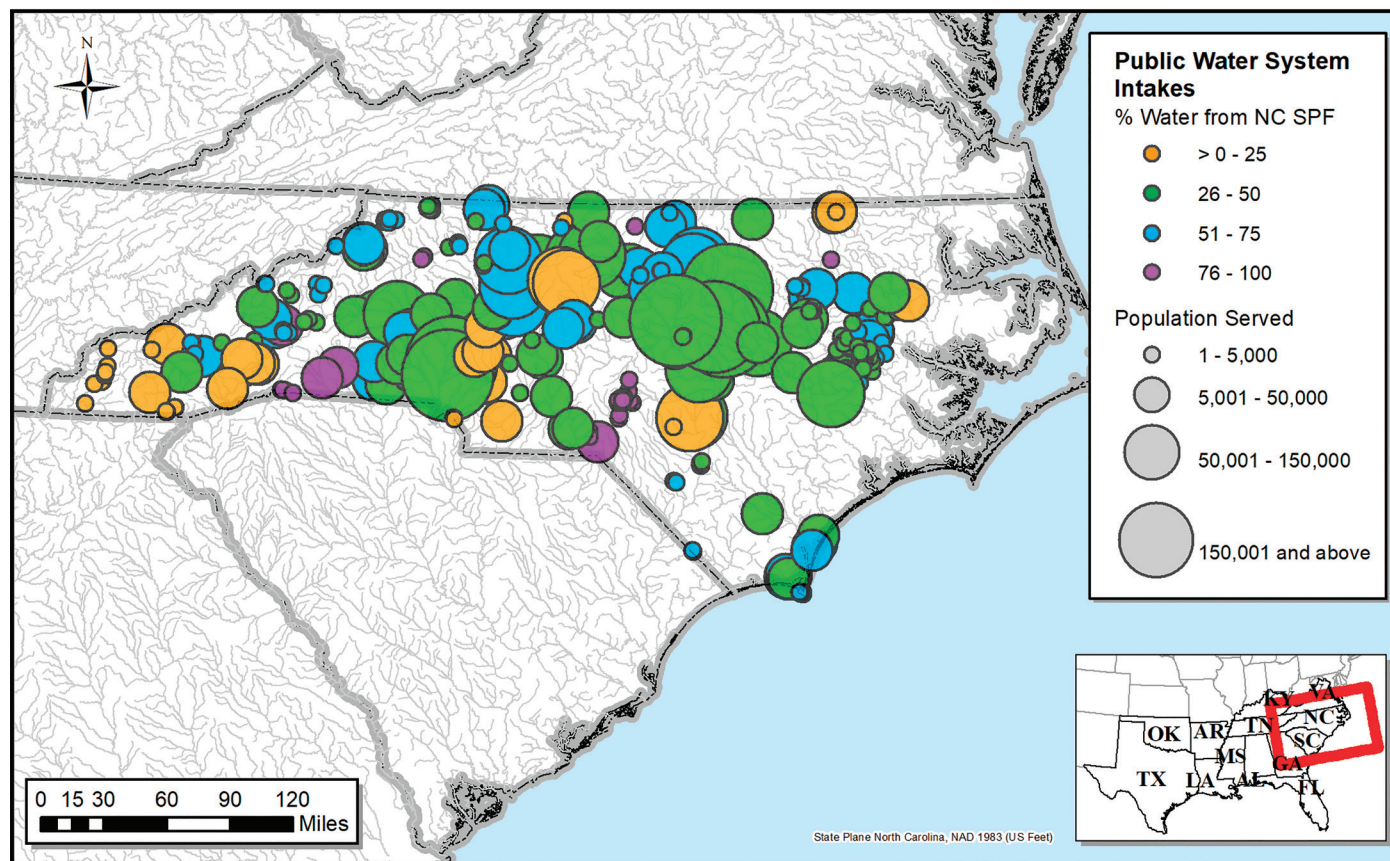


Figure A.NC.5—(C) Surface drinking water intakes within North Carolina by percentage of North Carolina SPF surface water available at intake (symbol color) and population served by each intake (symbol size). A total of 484 surface drinking water intakes within the State serve a population of 5,833,733 in 172 communities.

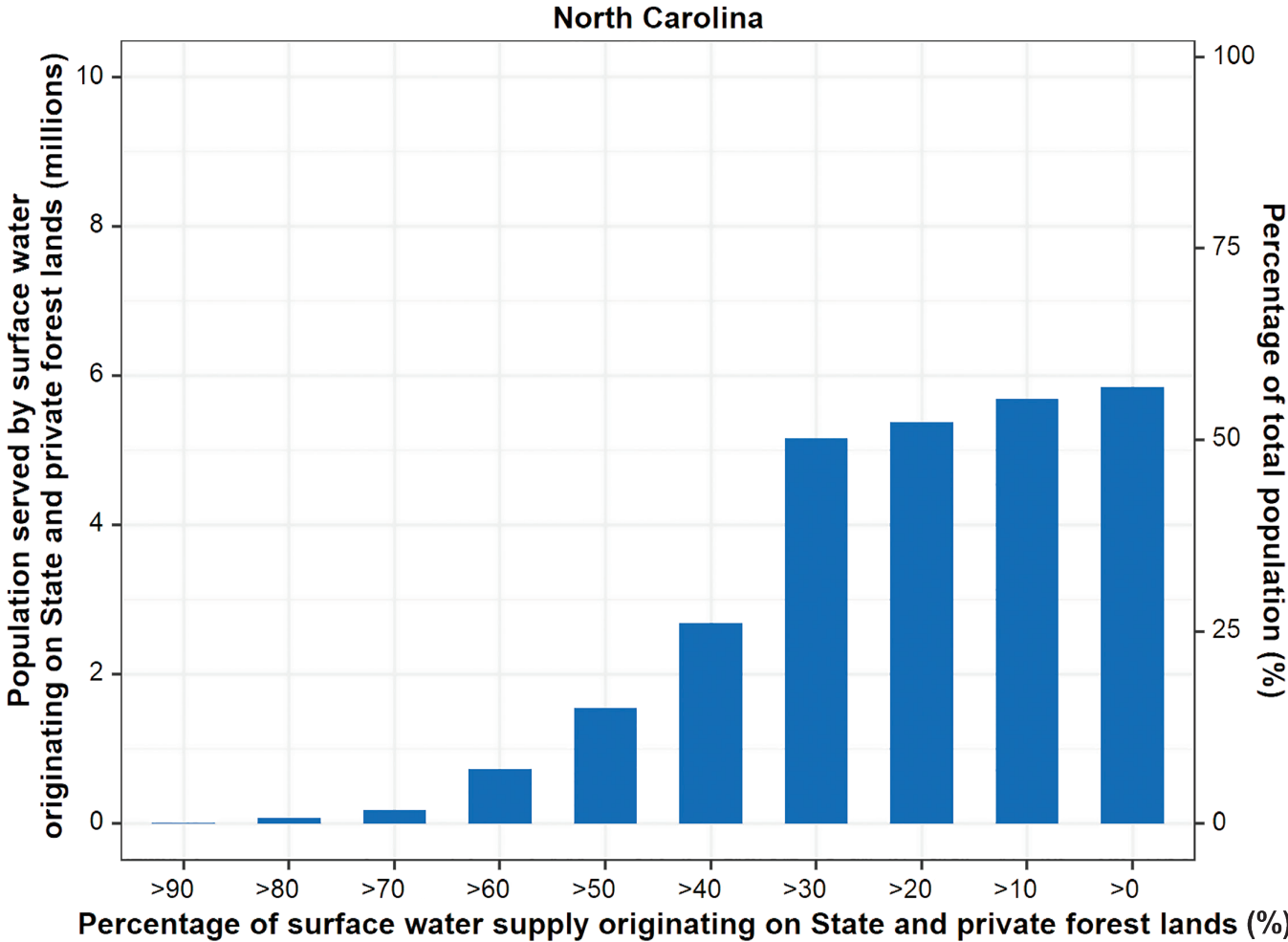


Figure A.NC.6—Cumulative frequency of population served according to percentage of water coming from North Carolina SPF lands.

*Public Water System Intakes Outside of North Carolina Receiving Water from North Carolina State and Private Forests*

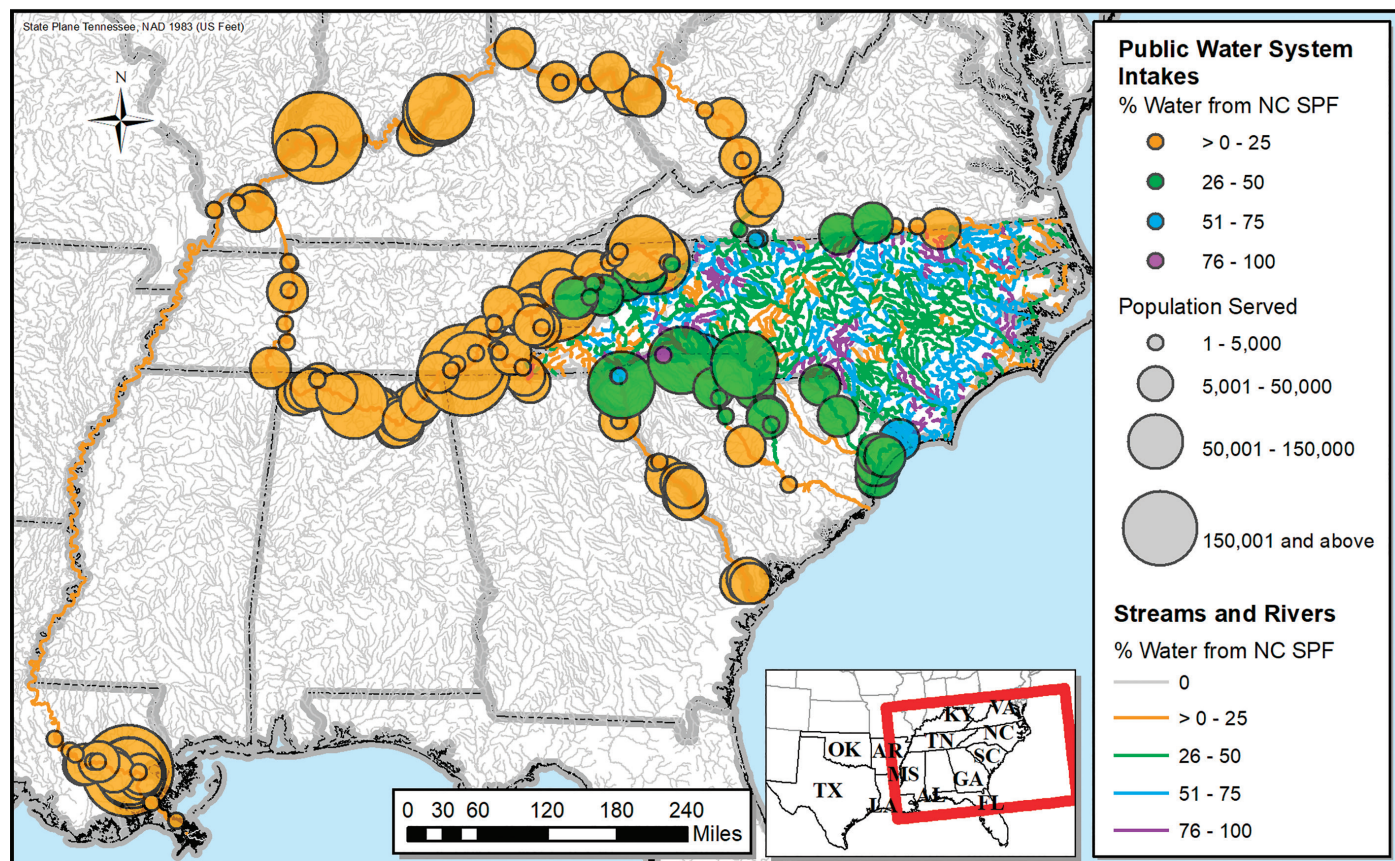


Figure A.NC.7—North Carolina streams by percentage of North Carolina SPF water content, surface drinking water intakes downstream of North Carolina by percentage of North Carolina SPF water content (symbol color), and population served by each of these external intakes (symbol size). A total of 296 surface drinking water intakes outside the State but carrying North Carolina SPF water serve a population of 5,166,453 in 182 communities.

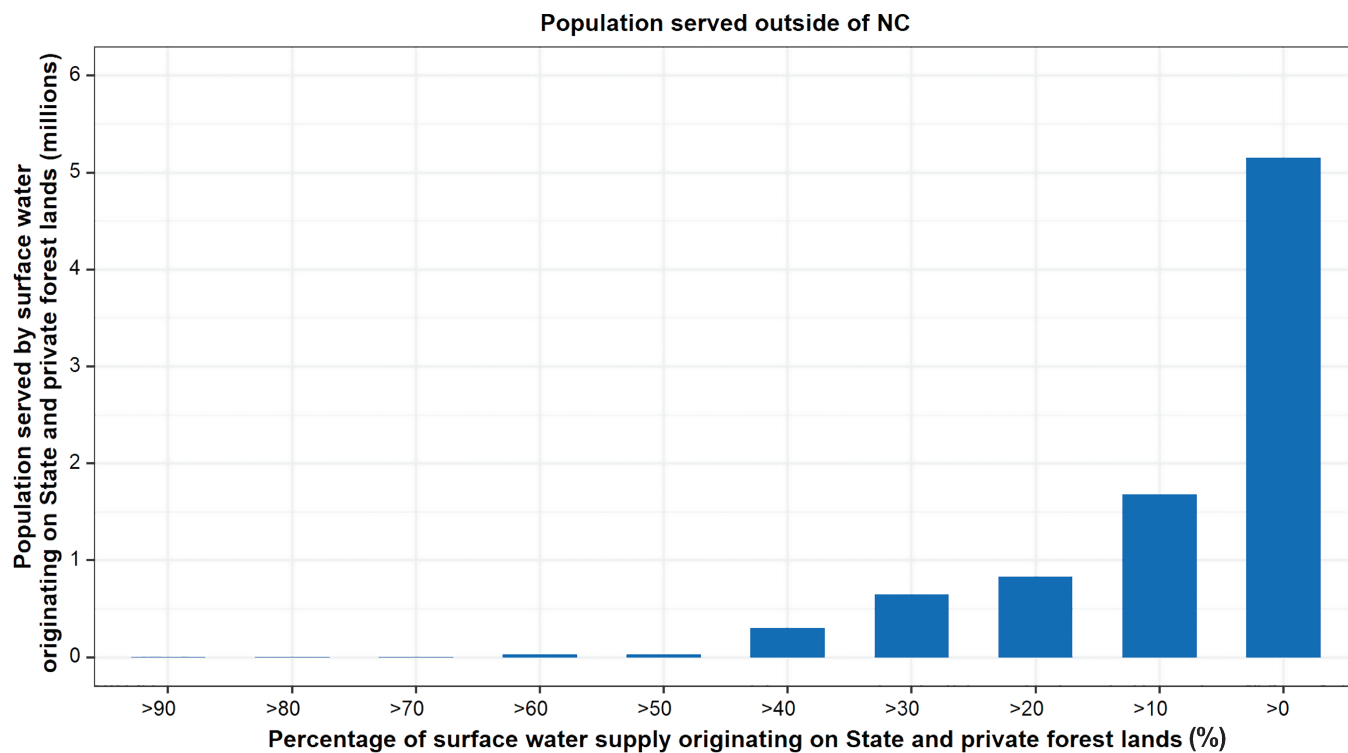


Figure A.NC.8—Cumulative frequency of non-North Carolina population served according to percentage of water coming from North Carolina SPF lands.

*Multi-Intake Public Water Systems (Aggregated to Single Symbol)  
Receiving Water from North Carolina State and Private Forests*

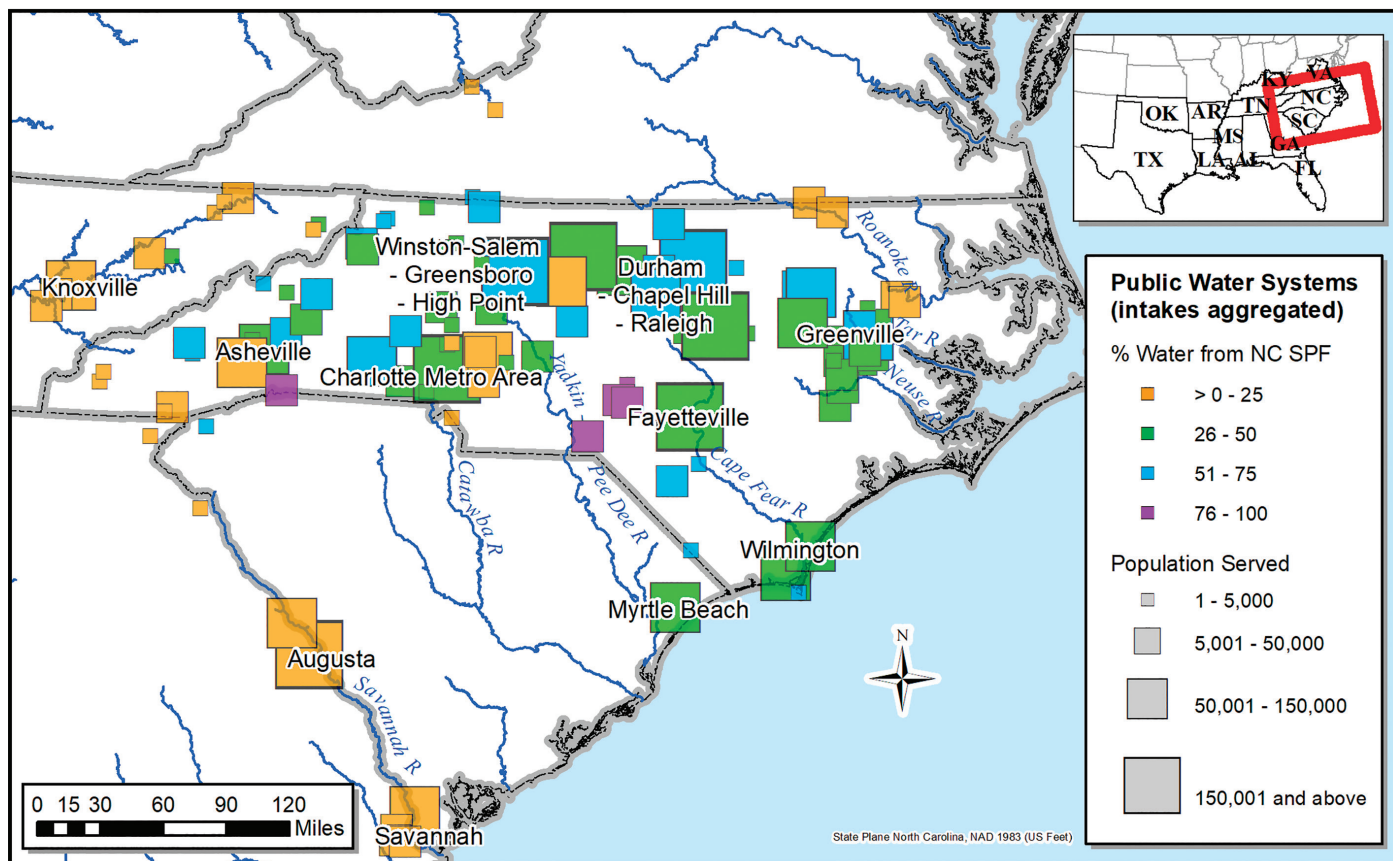


Figure A.NC.9—Multi-intake public water systems aggregated to single data point. Symbol color and size represent values for an entire municipal or corporate water supply system rather than values for individual surface drinking water intakes. Systems with no more than a single surface drinking water intake are not represented on this map.

## Charlotte Detail

*Streams and Public Water System Intakes of the Charlotte, NC, Area  
Receiving Water from North Carolina State and Private Forests*

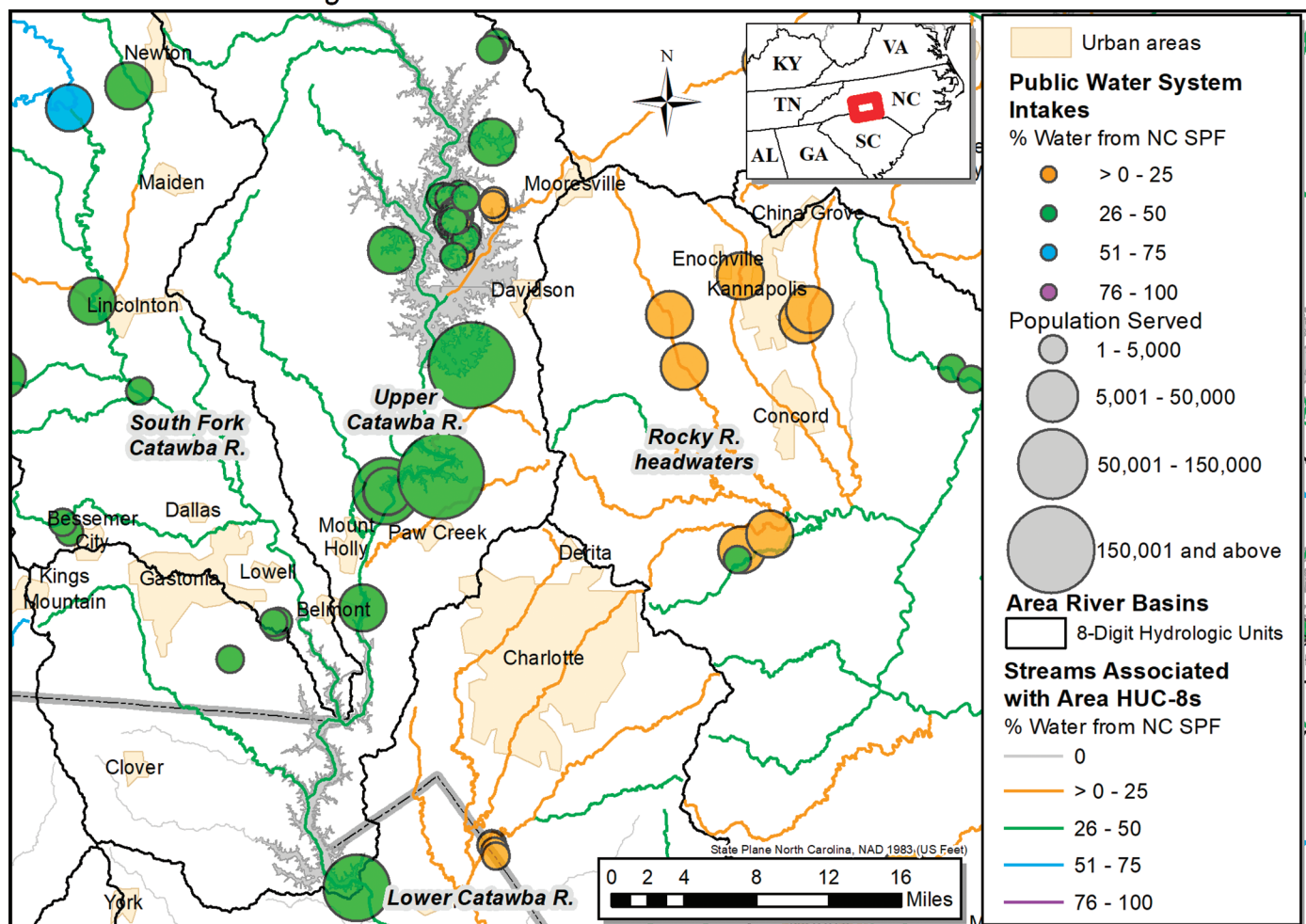


Figure A.NC.10—Local-scale detail showing percentage of water from North Carolina SPF for streams and surface drinking water intakes around Charlotte, NC.

## Sandhills Detail

*Streams and Public Water System Intakes of the Sandhills Area, NC,  
Receiving Water from North Carolina State and Private Forests*

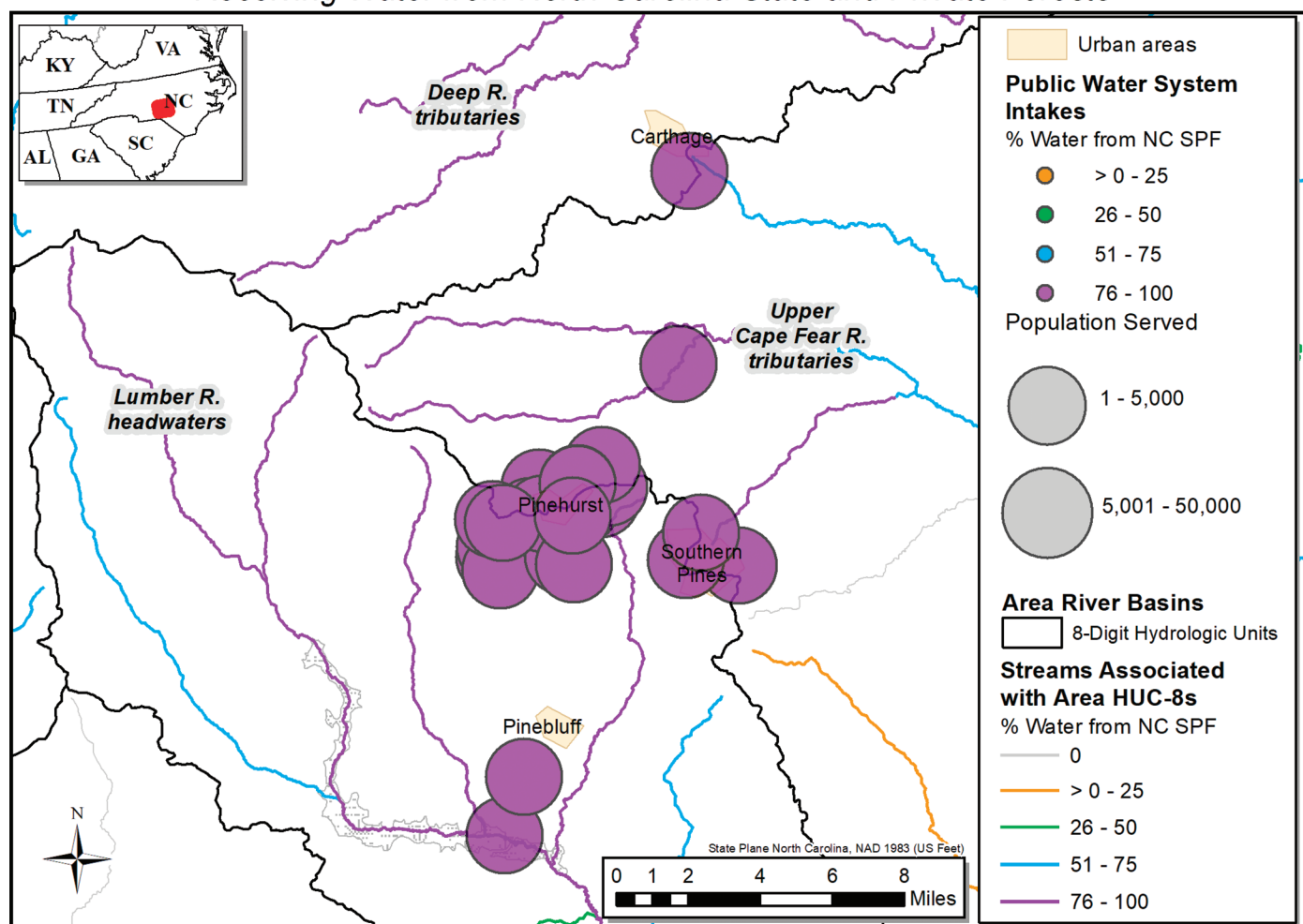


Figure A.NC.11—Local-scale detail showing percentage of water from North Carolina SPF for streams and surface drinking water intakes around Pinehurst and Southern Pines, NC.

## Triad Area Detail

*Streams and Public Water System Intakes of the Triad Area, NC,  
Receiving Water from North Carolina State and Private Forests*

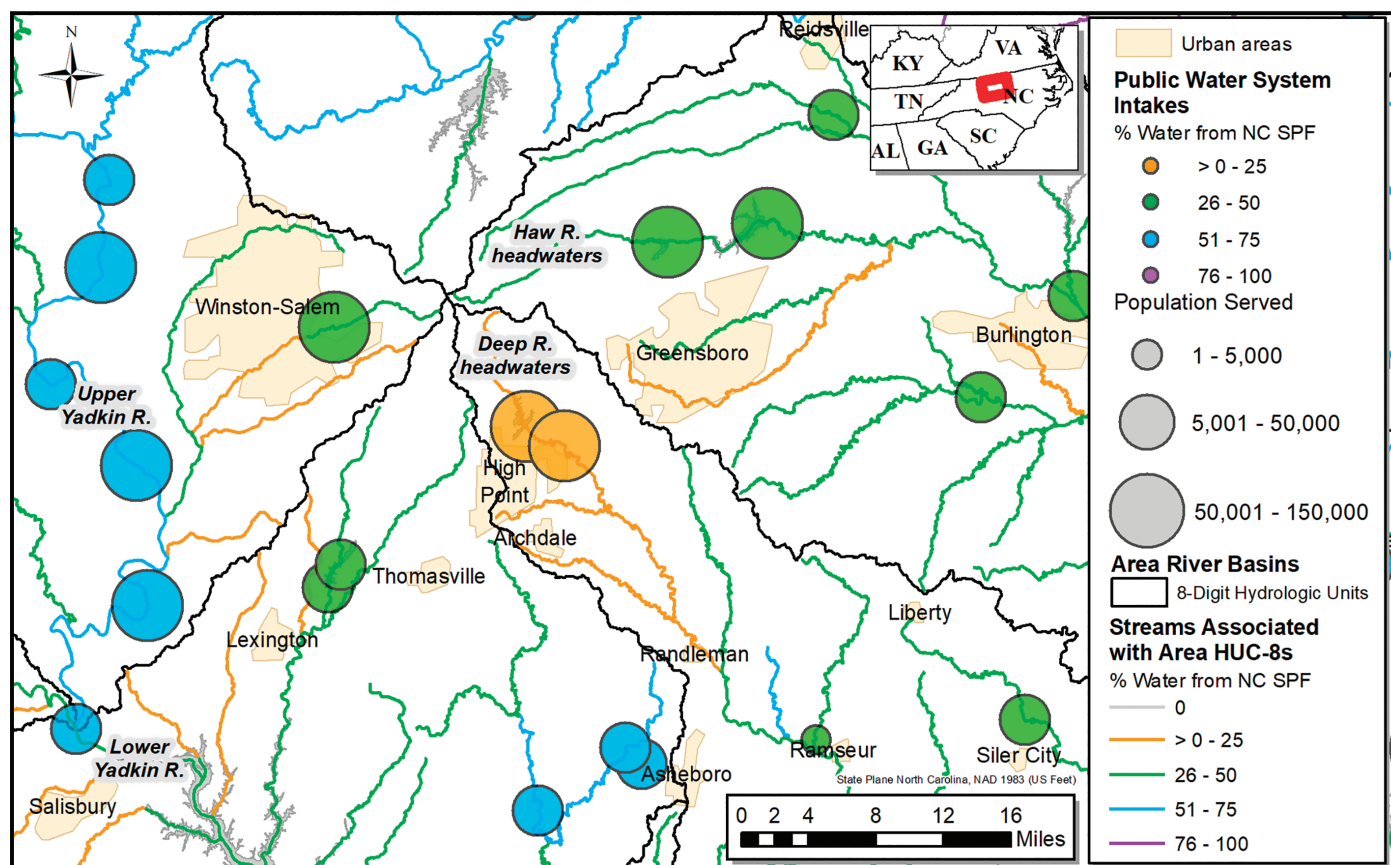


Figure A.NC.12—Local-scale detail showing percentage of water from North Carolina SPF for streams and surface drinking water intakes around Greensboro, Winston-Salem, and High Point, NC.

## Triangle Area Detail

*Streams and Public Water System Intakes of the Triangle Area, NC,  
Receiving Water from North Carolina State and Private Forests*

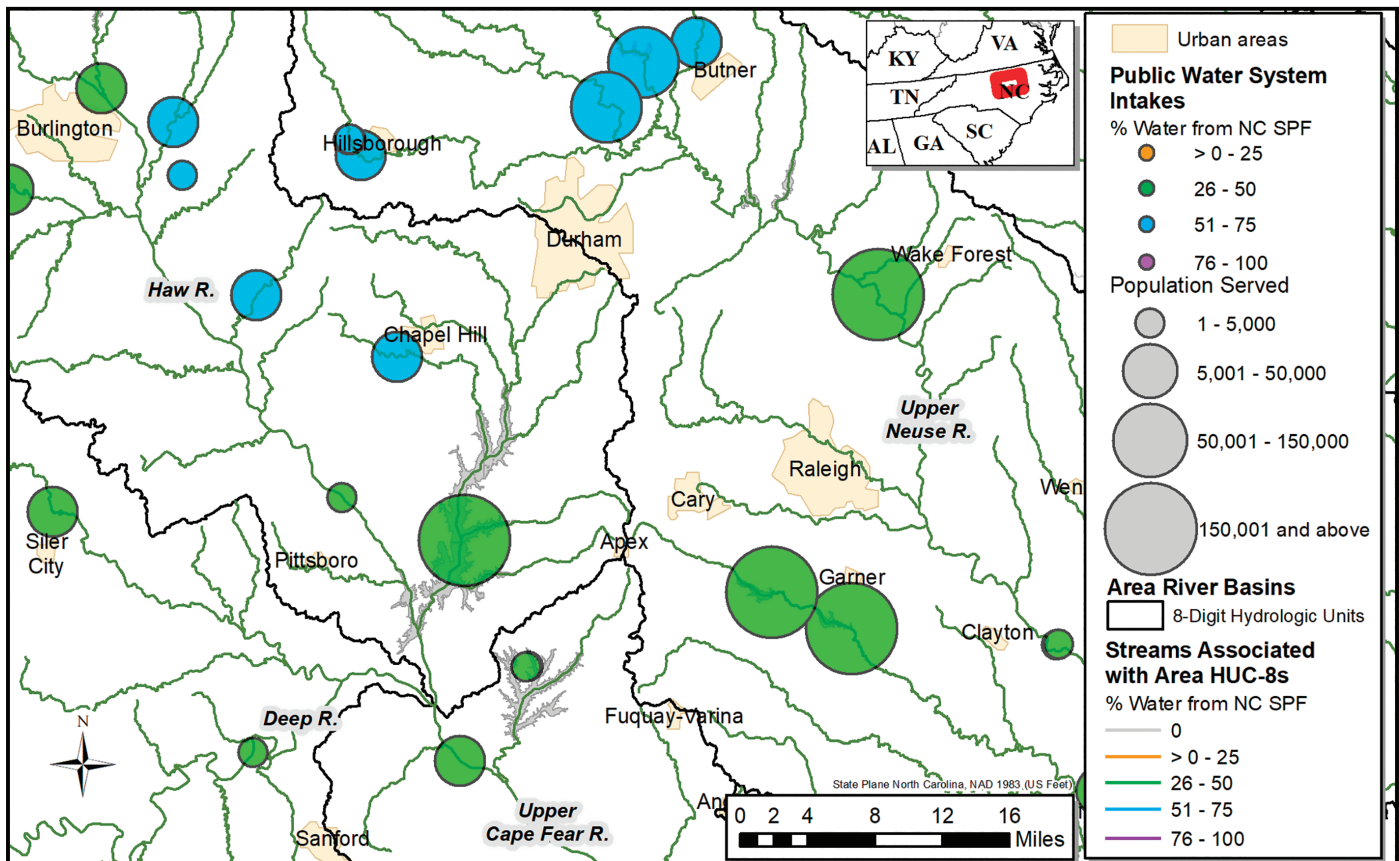


Figure A.NC.13—Local-scale detail showing percentage of water from North Carolina SPF for streams and surface drinking water intakes around Raleigh, Durham, and Chapel Hill, NC.

## Durham, NC, Case Study

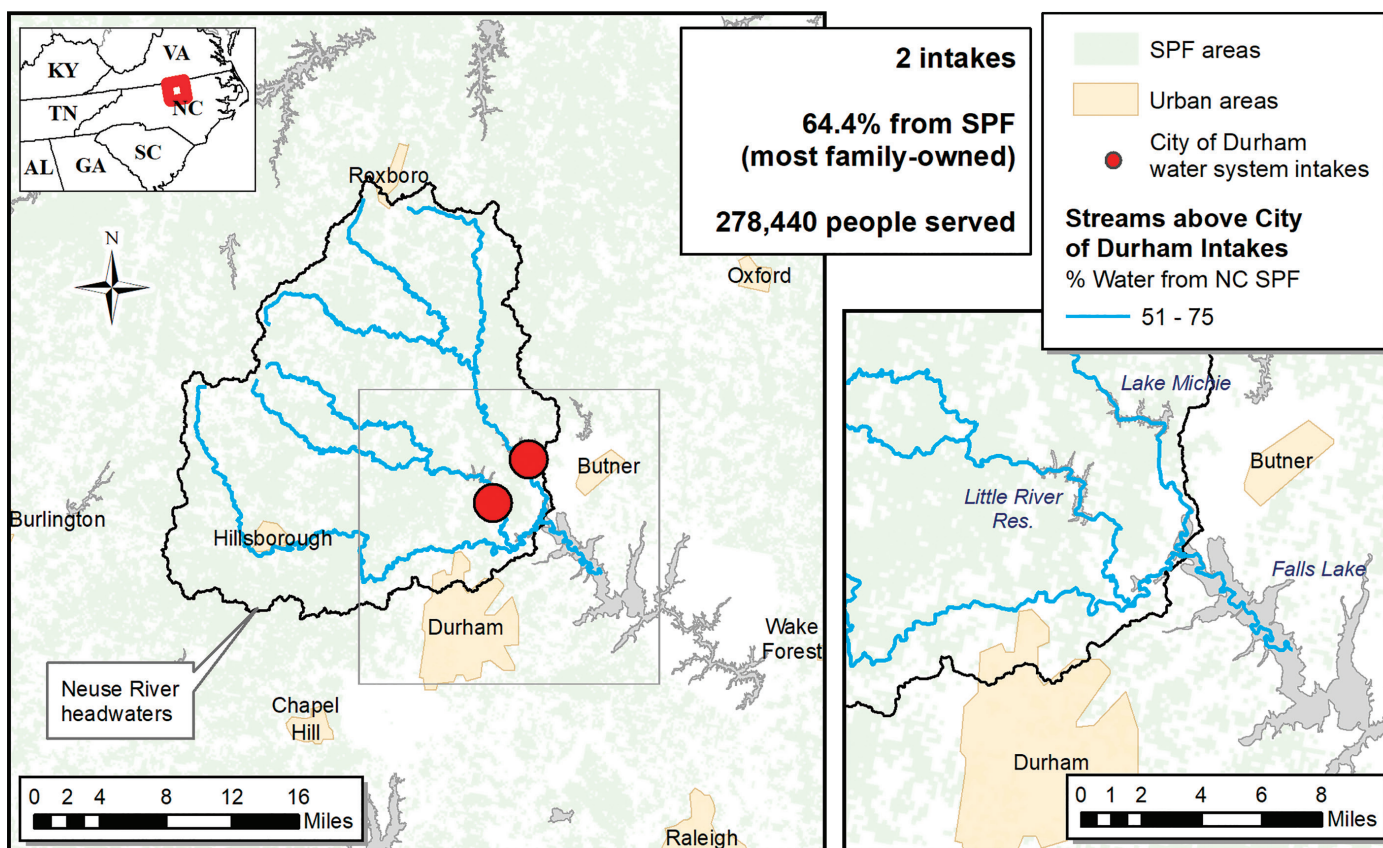


Figure A.NC.14—Case study of the City of Durham public water supply system, Durham, NC, illustrating SPF water in streams supplying the two surface drinking water intakes. When this water reaches the intakes, 64.4 percent of it comes from SPF lands. The largest ownership category in these specific SPF lands is family-owned.

**Table B.NC.1—Public water system intakes receiving water from State and private forest land in North Carolina**

Intake ID	Public water system name	Intake number for system	State	Population served by intake	Total volume of surface water available to intake (million m <sup>3</sup> yr <sup>-1</sup> )	Total surface water from State and private forest lands (percent)
1	ALBEMARLE, CITY OF	1 of 2	NC	8,000	4397	45.7
2	ALBEMARLE, CITY OF	2 of 2	NC	8,000	4722	45.5
3	ANDREWS, TOWN OF	1 of 3	NC	1,120	148	10.2
4	ANDREWS, TOWN OF	2 of 3	NC	1,120	148	10.2
5	ANDREWS, TOWN OF	3 of 3	NC	1,120	148	10.2
6	ANSON COUNTY WATER SYSTEM		NC	13,380	6536	44.9
7	APPALACHIAN STATE UNIV WTP	1 of 2	NC	5,575	131	58.1
8	APPALACHIAN STATE UNIV WTP	2 of 2	NC	5,575	131	58.1
9	ASHEBORO, CITY OF	1 of 3	NC	8,587	29	56.4
10	ASHEBORO, CITY OF	2 of 3	NC	8,587	29	56.4
11	ASHEBORO, CITY OF	3 of 3	NC	8,587	172	51.3
12	ASHEVILLE CITY OF	1 of 4	NC	31,075	54	78.2
13	ASHEVILLE CITY OF	2 of 4	NC	31,075	131	67.9
14	ASHEVILLE CITY OF	3 of 4	NC	31,075	140	9.4
15	ASHEVILLE CITY OF	4 of 4	NC	31,075	140	9.4
16	AYDEN TOWN OF	1 of 3	NC	1,700	52	40.1
17	AYDEN TOWN OF	2 of 3	NC	1,700	52	40.1
18	AYDEN TOWN OF	3 of 3	NC	1,700	197	38.9
19	BALSAM CENTER FOR HOPE & RECOVERY	1 of 2	NC	13	54	60.5
20	BALSAM CENTER FOR HOPE & RECOVERY	2 of 2	NC	13	54	60.5
21	BEECH MOUNTAIN, TOWN OF		NC	2,418	340	53.8
22	BELL ARTHUR WATER CORP	1 of 5	NC	2,005	2568	54.8
23	BELL ARTHUR WATER CORP	2 of 5	NC	2,005	52	41.2
24	BELL ARTHUR WATER CORP	3 of 5	NC	2,005	160	39.8
25	BELL ARTHUR WATER CORP	4 of 5	NC	2,005	160	39.8
26	BELL ARTHUR WATER CORP	5 of 5	NC	2,005	197	38.9
27	BELMONT, CITY OF		NC	11,077	2356	37.7
28	BESSEMER CITY, CITY OF	1 of 2	NC	2,742	32	30.9
29	BESSEMER CITY, CITY OF	2 of 2	NC	2,742	32	30.9
30	BETHEL, TOWN OF	1 of 2	NC	820	48	44.7
31	BETHEL, TOWN OF	2 of 2	NC	820	106	36.9
32	BILTMORE ESTATES	1 of 2	NC	429	1634	38.2
33	BILTMORE ESTATES	2 of 2	NC	429	1634	38.2
34	BLACK MOUNTAIN, TOWN OF	1 of 12	NC	745	30	65.1
35	BLACK MOUNTAIN, TOWN OF	2 of 12	NC	745	30	65.1
36	BLACK MOUNTAIN, TOWN OF	3 of 12	NC	745	30	65.1
37	BLACK MOUNTAIN, TOWN OF	4 of 12	NC	745	30	65.1
38	BLACK MOUNTAIN, TOWN OF	5 of 12	NC	745	30	65.1
39	BLACK MOUNTAIN, TOWN OF	6 of 12	NC	745	30	65.1

(continued)

**Table B.NC.1 (continued)—Public water system intakes receiving water from State and private forest land in North Carolina**

Intake ID	Public water system name	Intake number for system	State	Population served by intake	Total volume of surface water available to intake (million m <sup>3</sup> yr <sup>-1</sup> )	Total surface water from State and private forest lands (percent)
40	BLACK MOUNTAIN, TOWN OF	7 of 12	NC	745	30	65.1
41	BLACK MOUNTAIN, TOWN OF	8 of 12	NC	745	30	65.1
42	BLACK MOUNTAIN, TOWN OF	9 of 12	NC	745	30	65.1
43	BLACK MOUNTAIN, TOWN OF	10 of 12	NC	745	30	65.1
44	BLACK MOUNTAIN, TOWN OF	11 of 12	NC	745	30	65.1
45	BLACK MOUNTAIN, TOWN OF	12 of 12	NC	745	30	65.1
46	BLADEN BLUFFS WATER SYSTEM		NC	4,589	4517	45.3
47	BLOWING ROCK, TOWN OF	1 of 2	NC	819	67	44.1
48	BLOWING ROCK, TOWN OF	2 of 2	NC	819	67	44.1
49	BOONE, TOWN OF	1 of 2	NC	9,045	67	44.1
50	BOONE, TOWN OF	2 of 2	NC	9,045	67	44.1
51	BREVARD, CITY OF		NC	8,700	37	20.3
52	BROAD RIVER WATER AUTHORITY		NC	16,525	357	80.3
53	BROOKWOOD SOUTH/FAYETTEVILLE PWC		NC	2,357	303	19.6
54	BRUNSWICK COUNTY WATER SYSTEM	1 of 15	NC	6,383	27	65.7
55	BRUNSWICK COUNTY WATER SYSTEM	2 of 15	NC	6,383	27	65.7
56	BRUNSWICK COUNTY WATER SYSTEM	3 of 15	NC	6,383	27	65.7
57	BRUNSWICK COUNTY WATER SYSTEM	4 of 15	NC	6,383	27	65.7
58	BRUNSWICK COUNTY WATER SYSTEM	5 of 15	NC	6,383	21	53.8
59	BRUNSWICK COUNTY WATER SYSTEM	6 of 15	NC	6,383	4822	47.1
60	BRUNSWICK COUNTY WATER SYSTEM	7 of 15	NC	6,383	30	46.7
61	BRUNSWICK COUNTY WATER SYSTEM	8 of 15	NC	6,383	30	46.7
62	BRUNSWICK COUNTY WATER SYSTEM	9 of 15	NC	6,383	30	46.7
63	BRUNSWICK COUNTY WATER SYSTEM	10 of 15	NC	6,383	30	46.7
64	BRUNSWICK COUNTY WATER SYSTEM	11 of 15	NC	6,383	30	46.7
65	BRUNSWICK COUNTY WATER SYSTEM	12 of 15	NC	6,383	30	46.7
66	BRUNSWICK COUNTY WATER SYSTEM	13 of 15	NC	6,383	30	46.7
67	BRUNSWICK COUNTY WATER SYSTEM	14 of 15	NC	6,383	30	46.7
68	BRUNSWICK COUNTY WATER SYSTEM	15 of 15	NC	6,383	30	46.7
69	BRYSON CITY, TOWN OF		NC	4,395	88	1
70	BURLINGTON, CITY OF	1 of 2	NC	26,017	104	46.7
71	BURLINGTON, CITY OF	2 of 2	NC	26,017	262	32.9
72	BURNSVILLE, TOWN OF	1 of 2	NC	1,925	113	48.5
73	BURNSVILLE, TOWN OF	2 of 2	NC	1,925	113	48.5
74	CANTON, TOWN OF		NC	4,259	269	28.9
75	CARTHAGE, TOWN OF	1 of 2	NC	2,108	23	88.8
76	CARTHAGE, TOWN OF	2 of 2	NC	2,108	69	84.3
77	CARY, TOWN OF		NC	189,600	330	34.7

(continued)

**Table B.NC.1 (continued)—Public water system intakes receiving water from State and private forest land in North Carolina**

Intake ID	Public water system name	Intake number for system	State	Population served by intake	Total volume of surface water available to intake (million m <sup>3</sup> yr <sup>-1</sup> )	Total surface water from State and private forest lands (percent)
78	CFPUA-WILMINGTON	1 of 7	NC	19,631	8909	52.6
79	CFPUA-WILMINGTON	2 of 7	NC	19,631	4822	47.1
80	CFPUA-WILMINGTON	3 of 7	NC	19,631	4822	47.1
81	CFPUA-WILMINGTON	4 of 7	NC	19,631	94	35.7
82	CFPUA-WILMINGTON	5 of 7	NC	19,631	94	35.7
83	CFPUA-WILMINGTON	6 of 7	NC	19,631	94	35.7
84	CFPUA-WILMINGTON	7 of 7	NC	19,631	94	35.7
85	CHARLOTTE WATER	1 of 2	NC	477,322	2098	37.7
86	CHARLOTTE WATER	2 of 2	NC	477,322	2170	37.3
87	CHATHAM CO-NORTH		NC	17,698	330	34.7
88	CHEROKEE WATER SYSTEM		NC	9,694	369	3.7
89	CHERRYVILLE, CITY OF		NC	5,800	82	25.6
90	CLEVELAND COUNTY WATER	1 of 2	NC	25,520	167	73.8
91	CLEVELAND COUNTY WATER	2 of 2	NC	25,520	39	53.1
92	CONCORD, CITY OF	1 of 3	NC	33,118	116	22.6
93	CONCORD, CITY OF	2 of 3	NC	33,118	116	22.6
94	CONCORD, CITY OF	3 of 3	NC	33,118	43	20.9
95	COUNTRY ACRES/SOUTHGATE		NC	668	783	39.3
96	DALLAS, TOWN OF		NC	6,885	2170	37.3
97	DAVIDSON WATER INC		NC	147,455	2595	52.6
98	DAVIE COUNTY WATER SYSTEM	1 of 3	NC	9,834	2163	56.8
99	DAVIE COUNTY WATER SYSTEM	2 of 3	NC	9,834	970	40.1
100	DAVIE COUNTY WATER SYSTEM	3 of 3	NC	9,834	970	40.1
101	DEEP RUN WATER CORPORATION	1 of 12	NC	1,099	47	51.6
102	DEEP RUN WATER CORPORATION	2 of 12	NC	1,099	47	51.6
103	DEEP RUN WATER CORPORATION	3 of 12	NC	1,099	38	51.5
104	DEEP RUN WATER CORPORATION	4 of 12	NC	1,099	38	51.5
105	DEEP RUN WATER CORPORATION	5 of 12	NC	1,099	38	51.5
106	DEEP RUN WATER CORPORATION	6 of 12	NC	1,099	38	51.5
107	DEEP RUN WATER CORPORATION	7 of 12	NC	1,099	38	51.5
108	DEEP RUN WATER CORPORATION	8 of 12	NC	1,099	85	49
109	DEEP RUN WATER CORPORATION	9 of 12	NC	1,099	85	49
110	DEEP RUN WATER CORPORATION	10 of 12	NC	1,099	2896	42.3
111	DEEP RUN WATER CORPORATION	11 of 12	NC	1,099	2896	42.3
112	DEEP RUN WATER CORPORATION	12 of 12	NC	1,099	2896	42.3
113	DENTON, TOWN OF		NC	3,080	4397	45.7
114	DOBSON, TOWN OF		NC	2,615	111	45.2
115	DUNN, CITY OF		NC	11,110	3391	46.5

(continued)

**Table B.NC.1 (continued)—Public water system intakes receiving water from State and private forest land in North Carolina**

Intake ID	Public water system name	Intake number for system	State	Population served by intake	Total volume of surface water available to intake (million m <sup>3</sup> yr <sup>-1</sup> )	Total surface water from State and private forest lands (percent)
116	DURHAM, CITY OF	1 of 2	NC	139,220	87	65.4
117	DURHAM, CITY OF	2 of 2	NC	139,220	162	63.8
118	EASTERN PINES WATER CORP	1 of 10	NC	2,130	93	66.3
119	EASTERN PINES WATER CORP	2 of 10	NC	2,130	67	51.9
120	EASTERN PINES WATER CORP	3 of 10	NC	2,130	67	51.9
121	EASTERN PINES WATER CORP	4 of 10	NC	2,130	67	51.9
122	EASTERN PINES WATER CORP	5 of 10	NC	2,130	67	51.9
123	EASTERN PINES WATER CORP	6 of 10	NC	2,130	100	45.8
124	EASTERN PINES WATER CORP	7 of 10	NC	2,130	100	45.8
125	EASTERN PINES WATER CORP	8 of 10	NC	2,130	100	45.8
126	EASTERN PINES WATER CORP	9 of 10	NC	2,130	4298	41.9
127	EASTERN PINES WATER CORP	10 of 10	NC	2,130	52	40.1
128	EDEN, CITY OF		NC	15,527	1217	49.3
129	ELKIN, TOWN OF	1 of 2	NC	2,012	40	41.4
130	ELKIN, TOWN OF	2 of 2	NC	2,012	40	41.4
131	ELM CITY, TOWN OF	1 of 4	NC	430	55	37.9
132	ELM CITY, TOWN OF	2 of 4	NC	430	55	37.9
133	ELM CITY, TOWN OF	3 of 4	NC	430	55	37.9
134	ELM CITY, TOWN OF	4 of 4	NC	430	24	36.4
135	ENFIELD WATER SYSTEM		NC	2,506	452	76.8
136	FARMVILLE, TOWN OF	1 of 8	NC	934	56	40
137	FARMVILLE, TOWN OF	2 of 8	NC	934	160	39.8
138	FARMVILLE, TOWN OF	3 of 8	NC	934	160	39.8
139	FARMVILLE, TOWN OF	4 of 8	NC	934	40	38.8
140	FARMVILLE, TOWN OF	5 of 8	NC	934	58	38.7
141	FARMVILLE, TOWN OF	6 of 8	NC	934	58	38.7
142	FARMVILLE, TOWN OF	7 of 8	NC	934	58	38.7
143	FARMVILLE, TOWN OF	8 of 8	NC	934	58	38.7
144	FAYETTEVILLE PUBLIC WORKS COMM	1 of 2	NC	103,097	3962	46.6
145	FAYETTEVILLE PUBLIC WORKS COMM	2 of 2	NC	103,097	55	13.5
146	FOREST CITY, TOWN OF		NC	16,558	101	75.8
147	FRANKLIN, TOWN OF		NC	9,575	112	9.5
148	FRANKLINTON, TOWN OF	1 of 2	NC	1,042	297	57.4
149	FRANKLINTON, TOWN OF	2 of 2	NC	1,042	45	50.4
150	GOLDSBORO, CITY OF		NC	34,959	2532	43.1
151	GRAHAM, CITY OF		NC	14,308	81	51.5
152	GRANITE FALLS, TOWN OF		NC	6,330	1327	38.2
153	GREENE CO REGIONAL WATER SYST	1 of 9	NC	1,079	58	38.7

(continued)

**Table B.NC.1 (continued)—Public water system intakes receiving water from State and private forest land in North Carolina**

Intake ID	Public water system name	Intake number for system	State	Population served by intake	Total volume of surface water available to intake (million m <sup>3</sup> yr <sup>-1</sup> )	Total surface water from State and private forest lands (percent)
154	GREENE CO REGIONAL WATER SYST	2 of 9	NC	1,079	58	38.7
155	GREENE CO REGIONAL WATER SYST	3 of 9	NC	1,079	1070	38.1
156	GREENE CO REGIONAL WATER SYST	4 of 9	NC	1,079	759	37.9
157	GREENE CO REGIONAL WATER SYST	5 of 9	NC	1,079	804	37.9
158	GREENE CO REGIONAL WATER SYST	6 of 9	NC	1,079	804	37.9
159	GREENE CO REGIONAL WATER SYST	7 of 9	NC	1,079	804	37.9
160	GREENE CO REGIONAL WATER SYST	8 of 9	NC	1,079	34	35.6
161	GREENE CO REGIONAL WATER SYST	9 of 9	NC	1,079	34	35.6
162	GREENSBORO, CITY OF	1 of 2	NC	142,672	113	34.5
163	GREENSBORO, CITY OF	2 of 2	NC	142,672	78	30.2
164	GREENVILLE UTILITIES COMM	1 of 7	NC	14,735	22	57.8
165	GREENVILLE UTILITIES COMM	2 of 7	NC	14,735	22	57.8
166	GREENVILLE UTILITIES COMM	3 of 7	NC	14,735	22	57.8
167	GREENVILLE UTILITIES COMM	4 of 7	NC	14,735	2602	54.8
168	GREENVILLE UTILITIES COMM	5 of 7	NC	14,735	2602	54.8
169	GREENVILLE UTILITIES COMM	6 of 7	NC	14,735	2602	54.8
170	GREENVILLE UTILITIES COMM	7 of 7	NC	14,735	2602	54.8
171	GRIFTON, TOWN OF		NC	2,800	1104	38.3
172	HAMLET WATER SYSTEM		NC	10,452	40	83.3
173	HARBOUR POINT S/D	1 of 34	NC	116	2028	38.8
174	HARBOUR POINT S/D	2 of 34	NC	116	2028	38.8
175	HARBOUR POINT S/D	3 of 34	NC	116	2028	38.8
176	HARBOUR POINT S/D	4 of 34	NC	116	2028	38.8
177	HARBOUR POINT S/D	5 of 34	NC	116	2028	38.8
178	HARBOUR POINT S/D	6 of 34	NC	116	2028	38.8
179	HARBOUR POINT S/D	7 of 34	NC	116	2028	38.8
180	HARBOUR POINT S/D	8 of 34	NC	116	2028	38.8
181	HARBOUR POINT S/D	9 of 34	NC	116	2028	38.8
182	HARBOUR POINT S/D	10 of 34	NC	116	2028	38.8
183	HARBOUR POINT S/D	11 of 34	NC	116	2028	38.8
184	HARBOUR POINT S/D	12 of 34	NC	116	2028	38.8
185	HARBOUR POINT S/D	13 of 34	NC	116	2028	38.8
186	HARBOUR POINT S/D	14 of 34	NC	116	2028	38.8
187	HARBOUR POINT S/D	15 of 34	NC	116	2028	38.8
188	HARBOUR POINT S/D	16 of 34	NC	116	2028	38.8
189	HARBOUR POINT S/D	17 of 34	NC	116	2028	38.8
190	HARBOUR POINT S/D	18 of 34	NC	116	2028	38.8
191	HARBOUR POINT S/D	19 of 34	NC	116	2028	38.8

(continued)

**Table B.NC.1 (continued)—Public water system intakes receiving water from State and private forest land in North Carolina**

Intake ID	Public water system name	Intake number for system	State	Population served by intake	Total volume of surface water available to intake	Total surface water from State and private forest lands
					(million m <sup>3</sup> yr <sup>-1</sup> )	(percent)
192	HARBOUR POINT S/D	20 of 34	NC	116	2028	38.8
193	HARBOUR POINT S/D	21 of 34	NC	116	2028	38.8
194	HARBOUR POINT S/D	22 of 34	NC	116	2028	38.8
195	HARBOUR POINT S/D	23 of 34	NC	116	2028	38.8
196	HARBOUR POINT S/D	24 of 34	NC	116	2028	38.8
197	HARBOUR POINT S/D	25 of 34	NC	116	2028	38.8
198	HARBOUR POINT S/D	26 of 34	NC	116	2028	38.8
199	HARBOUR POINT S/D	27 of 34	NC	116	2028	38.8
200	HARBOUR POINT S/D	28 of 34	NC	116	2098	37.7
201	HARBOUR POINT S/D	29 of 34	NC	116	2098	37.7
202	HARBOUR POINT S/D	30 of 34	NC	116	44	8
203	HARBOUR POINT S/D	31 of 34	NC	116	44	8
204	HARBOUR POINT S/D	32 of 34	NC	116	44	8
205	HARBOUR POINT S/D	33 of 34	NC	116	44	8
206	HARBOUR POINT S/D	34 of 34	NC	116	44	8
207	HARNETT CO DEPT OF PUBLIC UTIL		NC	92,610	3084	46
208	HARRIS NUCLEAR PLANT WATER SYSTEM	1 of 2	NC	501	41	49.9
209	HARRIS NUCLEAR PLANT WATER SYSTEM	2 of 2	NC	501	41	49.9
210	HARRISBURG, TOWN OF	1 of 3	NC	5,055	18	20.3
211	HARRISBURG, TOWN OF	2 of 3	NC	5,055	18	20.3
212	HARRISBURG, TOWN OF	3 of 3	NC	5,055	18	20.3
213	HENDERSON-KERR LAKE REG WTR		NC	15,325	62	39.4
214	HENDERSONVILLE, CITY OF	1 of 3	NC	20,000	88	9.8
215	HENDERSONVILLE, CITY OF	2 of 3	NC	20,000	140	9.4
216	HENDERSONVILLE, CITY OF	3 of 3	NC	20,000	140	9.4
217	HICKORY CITY OF		NC	57,183	1370	38
218	HIGH POINT, CITY OF	1 of 2	NC	56,101	38	19.7
219	HIGH POINT, CITY OF	2 of 2	NC	56,101	80	16.1
220	HIGHLANDS, TOWN OF	1 of 3	NC	2,170	187	13.7
221	HIGHLANDS, TOWN OF	2 of 3	NC	2,170	98	9
222	HIGHLANDS, TOWN OF	3 of 3	NC	2,170	98	9
223	HILLSBOROUGH, TOWN OF		NC	14,000	59	63.8
224	INTERNATIONAL PAPER COMPANY		NC	750	4822	47.1
225	JEFFERSON, TOWN OF	1 of 4	NC	363	367	51
226	JEFFERSON, TOWN OF	2 of 4	NC	363	367	51
227	JEFFERSON, TOWN OF	3 of 4	NC	363	367	51
228	JEFFERSON, TOWN OF	4 of 4	NC	363	367	51
229	JOHNSTON CO-EAST		NC	28,768	1204	44.4

(continued)

**Table B.NC.1 (continued)—Public water system intakes receiving water from State and private forest land in North Carolina**

Intake ID	Public water system name	Intake number for system	State	Population served by intake	Total volume of surface water available to intake	Total surface water from State and private forest lands
					(million m <sup>3</sup> yr <sup>-1</sup> )	(percent)
230	JOHNSTON CO-WEST		NC	53,992	1204	44.4
231	JONESVILLE, TOWN OF		NC	3,012	990	68.3
232	KANNAPOLIS, CITY OF	1 of 3	NC	16,430	43	20.9
233	KANNAPOLIS, CITY OF	2 of 3	NC	16,430	65	18.9
234	KANNAPOLIS, CITY OF	3 of 3	NC	16,430	54	18.2
235	KING MOUNTAIN CLUB WATER	1 of 3	NC	50	187	13.7
236	KING MOUNTAIN CLUB WATER	2 of 3	NC	50	187	13.7
237	KING MOUNTAIN CLUB WATER	3 of 3	NC	50	187	13.7
238	KING, CITY OF		NC	20,490	1912	59
239	KINGS GRANT S/D	1 of 3	NC	154	747	39.7
240	KINGS GRANT S/D	2 of 3	NC	154	747	39.7
241	KINGS GRANT S/D	3 of 3	NC	154	747	39.7
242	KINGS MOUNTAIN, TOWN OF		NC	12,662	79	31.4
243	KINSTON, CITY OF	1 of 15	NC	1,832	85	49
244	KINSTON, CITY OF	2 of 15	NC	1,832	85	49
245	KINSTON, CITY OF	3 of 15	NC	1,832	3007	42.5
246	KINSTON, CITY OF	4 of 15	NC	1,832	3007	42.5
247	KINSTON, CITY OF	5 of 15	NC	1,832	3007	42.5
248	KINSTON, CITY OF	6 of 15	NC	1,832	3007	42.5
249	KINSTON, CITY OF	7 of 15	NC	1,832	3007	42.5
250	KINSTON, CITY OF	8 of 15	NC	1,832	3007	42.5
251	KINSTON, CITY OF	9 of 15	NC	1,832	2896	42.3
252	KINSTON, CITY OF	10 of 15	NC	1,832	2896	42.3
253	KINSTON, CITY OF	11 of 15	NC	1,832	2896	42.3
254	KINSTON, CITY OF	12 of 15	NC	1,832	45	39.4
255	KINSTON, CITY OF	13 of 15	NC	1,832	45	39.4
256	KINSTON, CITY OF	14 of 15	NC	1,832	62	37.4
257	KINSTON, CITY OF	15 of 15	NC	1,832	62	37.4
258	LAMPLIGHTER SOUTH-DANBY	1 of 7	NC	474	96	22.1
259	LAMPLIGHTER SOUTH-DANBY	2 of 7	NC	474	96	22.1
260	LAMPLIGHTER SOUTH-DANBY	3 of 7	NC	474	96	22.1
261	LAMPLIGHTER SOUTH-DANBY	4 of 7	NC	474	96	22.1
262	LAMPLIGHTER SOUTH-DANBY	5 of 7	NC	474	96	22.1
263	LAMPLIGHTER SOUTH-DANBY	6 of 7	NC	474	96	22.1
264	LAMPLIGHTER SOUTH-DANBY	7 of 7	NC	474	96	22.1
265	LENOIR, CITY OF		NC	21,344	1327	38.2
266	LEXINGTON, CITY OF		NC	18,931	71	26.3
267	LINCOLN COUNTY WTP		NC	31,727	2028	38.8

(continued)

**Table B.NC.1 (continued)—Public water system intakes receiving water from State and private forest land in North Carolina**

Intake ID	Public water system name	Intake number for system	State	Population served by intake	Total volume of surface water available to intake (million m <sup>3</sup> yr <sup>-1</sup> )	Total surface water from State and private forest lands (percent)
268	LINCOLNTON, CITY OF		NC	12,320	457	46.2
269	LONG SHOALS WATER SYSTEM		NC	185	596	41.8
270	LOUISBURG, TOWN OF		NC	4,165	383	55.2
271	LUMBERTON, CITY OF	1 of 9	NC	2,844	720	53.9
272	LUMBERTON, CITY OF	2 of 9	NC	2,844	720	53.9
273	LUMBERTON, CITY OF	3 of 9	NC	2,844	720	53.9
274	LUMBERTON, CITY OF	4 of 9	NC	2,844	720	53.9
275	LUMBERTON, CITY OF	5 of 9	NC	2,844	720	53.9
276	LUMBERTON, CITY OF	6 of 9	NC	2,844	720	53.9
277	LUMBERTON, CITY OF	7 of 9	NC	2,844	720	53.9
278	LUMBERTON, CITY OF	8 of 9	NC	2,844	720	53.9
279	LUMBERTON, CITY OF	9 of 9	NC	2,844	720	53.9
280	MADISON, TOWN OF		NC	2,787	700	58.9
281	MAGGIE VALLEY SANITARY DIST	1 of 2	NC	4,645	66	63.4
282	MAGGIE VALLEY SANITARY DIST	2 of 2	NC	4,645	66	63.4
283	MALLARD HEAD S/D	1 of 3	NC	244	44	8
284	MALLARD HEAD S/D	2 of 3	NC	244	44	8
285	MALLARD HEAD S/D	3 of 3	NC	244	44	8
286	MARION, CITY OF	1 of 3	NC	2,890	157	35.4
287	MARION, CITY OF	2 of 3	NC	2,890	157	35.4
288	MARION, CITY OF	3 of 3	NC	2,890	190	32.3
289	MARS HILL, TOWN OF	1 of 2	NC	1,600	45	73.6
290	MARS HILL, TOWN OF	2 of 2	NC	1,600	45	73.6
291	MARTIN CO REGIONAL WASA	1 of 2	NC	6,257	131	42.9
292	MARTIN CO REGIONAL WASA	2 of 2	NC	6,257	9171	21.3
293	MARTIN CO WATER & SEWER DIST 2		NC	2,527	136	41.9
294	MAYODAN, TOWN OF		NC	2,464	347	22.5
295	MOCKSVILLE, TOWN OF		NC	4,655	224	50.7
296	MONROE, CITY OF		NC	31,008	33	10.8
297	MONTGOMERY COUNTY WATER SYSTEM		NC	15,102	4800	45.7
298	MOORE CO PUBLIC UTIL-PINEHURST	1 of 17	NC	1,140	23	88.8
299	MOORE CO PUBLIC UTIL-PINEHURST	2 of 17	NC	1,140	23	88.8
300	MOORE CO PUBLIC UTIL-PINEHURST	3 of 17	NC	1,140	23	88.8
301	MOORE CO PUBLIC UTIL-PINEHURST	4 of 17	NC	1,140	23	88.8
302	MOORE CO PUBLIC UTIL-PINEHURST	5 of 17	NC	1,140	37	82.9
303	MOORE CO PUBLIC UTIL-PINEHURST	6 of 17	NC	1,140	37	82.9
304	MOORE CO PUBLIC UTIL-PINEHURST	7 of 17	NC	1,140	37	82.9
305	MOORE CO PUBLIC UTIL-PINEHURST	8 of 17	NC	1,140	37	82.9

(continued)

**Table B.NC.1 (continued)—Public water system intakes receiving water from State and private forest land in North Carolina**

Intake ID	Public water system name	Intake number for system	State	Population served by intake	Total volume of surface water available to intake	Total surface water from State and private forest lands
					(million m <sup>3</sup> yr <sup>-1</sup> )	(percent)
306	MOORE CO PUBLIC UTIL-PINEHURST	9 of 17	NC	1,140	37	82.9
307	MOORE CO PUBLIC UTIL-PINEHURST	10 of 17	NC	1,140	37	82.9
308	MOORE CO PUBLIC UTIL-PINEHURST	11 of 17	NC	1,140	37	82.9
309	MOORE CO PUBLIC UTIL-PINEHURST	12 of 17	NC	1,140	37	82.9
310	MOORE CO PUBLIC UTIL-PINEHURST	13 of 17	NC	1,140	37	82.6
311	MOORE CO PUBLIC UTIL-PINEHURST	14 of 17	NC	1,140	37	82.6
312	MOORE CO PUBLIC UTIL-PINEHURST	15 of 17	NC	1,140	37	82.6
313	MOORE CO PUBLIC UTIL-PINEHURST	16 of 17	NC	1,140	37	82.6
314	MOORE CO PUBLIC UTIL-PINEHURST	17 of 17	NC	1,140	37	82.6
315	MOORESVILLE TOWN OF		NC	38,003	1956	39.1
316	MORGANTON CITY OF		NC	38,845	738	43.5
317	MOUNT AIRY, CITY OF	1 of 2	NC	5,160	45	57
318	MOUNT AIRY, CITY OF	2 of 2	NC	5,160	93	50.3
319	MOUNT HOLLY, CITY OF		NC	17,216	2170	37.3
320	MOUNT PLEASANT, TOWN OF (WSACC)	1 of 2	NC	878	51	32.1
321	MOUNT PLEASANT, TOWN OF (WSACC)	2 of 2	NC	878	51	32.1
322	MURPHY, TOWN OF		NC	4,217	697	13
323	NASHVILLE, TOWN OF	1 of 5	NC	1,760	60	67.9
324	NASHVILLE, TOWN OF	2 of 5	NC	1,760	60	67.9
325	NASHVILLE, TOWN OF	3 of 5	NC	1,760	60	67.9
326	NASHVILLE, TOWN OF	4 of 5	NC	1,760	65	50.2
327	NASHVILLE, TOWN OF	5 of 5	NC	1,760	65	50.2
328	NEUSE COLONY S/D SECTION B	1 of 2	NC	93	1204	44.4
329	NEUSE COLONY S/D SECTION B	2 of 2	NC	93	1204	44.4
330	NEUSE REGIONAL WTR & SWR AUTH		NC	93,238	2896	42.3
331	NEWTON, CITY OF	1 of 2	NC	7,708	108	66.4
332	NEWTON, CITY OF	2 of 2	NC	7,708	53	26.2
333	NORTH LENOIR WATER CORP	1 of 13	NC	1,129	54	67.2
334	NORTH LENOIR WATER CORP	2 of 13	NC	1,129	45	39.4
335	NORTH LENOIR WATER CORP	3 of 13	NC	1,129	1104	38.3
336	NORTH LENOIR WATER CORP	4 of 13	NC	1,129	1070	38.1
337	NORTH LENOIR WATER CORP	5 of 13	NC	1,129	1070	38.1
338	NORTH LENOIR WATER CORP	6 of 13	NC	1,129	62	37.4
339	NORTH LENOIR WATER CORP	7 of 13	NC	1,129	62	37.4
340	NORTH LENOIR WATER CORP	8 of 13	NC	1,129	62	37.4
341	NORTH LENOIR WATER CORP	9 of 13	NC	1,129	62	37.4
342	NORTH LENOIR WATER CORP	10 of 13	NC	1,129	62	37.4
343	NORTH LENOIR WATER CORP	11 of 13	NC	1,129	62	37.4

(continued)

**Table B.NC.1 (continued)—Public water system intakes receiving water from State and private forest land in North Carolina**

Intake ID	Public water system name	Intake number for system	State	Population served by intake	Total volume of surface water available to intake (million m <sup>3</sup> yr <sup>-1</sup> )	Total surface water from State and private forest lands (percent)
344	NORTH LENOIR WATER CORP	12 of 13	NC	1,129	34	35.6
345	NORTH LENOIR WATER CORP	13 of 13	NC	1,129	34	35.6
346	NORTH WILKESBORO, TOWN OF		NC	4,245	109	76
347	NORWOOD, TOWN OF		NC	4,128	4800	45.7
348	OAKBORO, TOWN OF		NC	3,063	77	35.2
349	ORANGE-ALAMANCE WATER SYSTEM	1 of 5	NC	1,774	59	63.8
350	ORANGE-ALAMANCE WATER SYSTEM	2 of 5	NC	1,774	59	63.8
351	ORANGE-ALAMANCE WATER SYSTEM	3 of 5	NC	1,774	59	63.8
352	ORANGE-ALAMANCE WATER SYSTEM	4 of 5	NC	1,774	81	51.5
353	ORANGE-ALAMANCE WATER SYSTEM	5 of 5	NC	1,774	81	51.5
354	ORANGE WATER & SEWER AUTHORITY	1 of 2	NC	41,650	24	65.9
355	ORANGE WATER & SEWER AUTHORITY	2 of 2	NC	41,650	31	61.7
356	PENDER COUNTY UTILITIES		NC	18,000	4822	47.1
357	PILGRIM'S PRIDE WATER SYSTEM		NC	1,040	938	49.8
358	PILOT MOUNTAIN, TOWN OF		NC	1,947	41	59.3
359	PINK HILL, TOWN OF		NC	950	29	61
360	PITTSBORO, TOWN OF		NC	4,401	1285	40.4
361	RALEIGH, CITY OF	1 of 3	NC	180,000	705	49
362	RALEIGH, CITY OF	2 of 3	NC	180,000	74	38.7
363	RALEIGH, CITY OF	3 of 3	NC	180,000	38	38.4
364	RAMSEUR, TOWN OF		NC	2,893	54	41.2
365	REIDSVILLE, CITY OF		NC	15,202	58	43.6
366	RICHMOND COUNTY WATER SYSTEM		NC	21,285	6536	44.9
367	ROANOKE RAPIDS SANITARY DIST	1 of 2	NC	9,689	8396	18
368	ROANOKE RAPIDS SANITARY DIST	2 of 2	NC	9,689	8379	17.9
369	ROBBINSVILLE, TOWN OF	1 of 6	NC	464	338	19.6
370	ROBBINSVILLE, TOWN OF	2 of 6	NC	464	338	19.6
371	ROBBINSVILLE, TOWN OF	3 of 6	NC	464	338	19.6
372	ROBBINSVILLE, TOWN OF	4 of 6	NC	464	338	19.6
373	ROBBINSVILLE, TOWN OF	5 of 6	NC	464	338	19.6
374	ROBBINSVILLE, TOWN OF	6 of 6	NC	464	338	19.6
375	ROCKINGHAM, CITY OF	1 of 3	NC	4,387	27	88.8
376	ROCKINGHAM, CITY OF	2 of 3	NC	4,387	27	88.8
377	ROCKINGHAM, CITY OF	3 of 3	NC	4,387	109	86.1
378	ROCKY MOUNT, CITY OF	1 of 2	NC	28,436	709	53.9
379	ROCKY MOUNT, CITY OF	2 of 2	NC	28,436	739	53.7
380	RONDA, TOWN OF	1 of 2	NC	454	18	32.7
381	RONDA, TOWN OF	2 of 2	NC	454	18	32.7

(continued)

**Table B.NC.1 (continued)—Public water system intakes receiving water from State and private forest land in North Carolina**

Intake ID	Public water system name	Intake number for system	State	Population served by intake	Total volume of surface water available to intake (million m <sup>3</sup> yr <sup>-1</sup> )	Total surface water from State and private forest lands (percent)
382	ROXBORO STEAM PLANT		NC	450	191	67.2
383	ROXBORO, CITY OF	1 of 2	NC	6,300	169	69.1
384	ROXBORO, CITY OF	2 of 2	NC	6,300	255	67.2
385	SALISBURY-ROWAN		NC	49,210	2748	51.7
386	SANFORD, CITY OF		NC	41,869	2874	44.9
387	SHELBY, CITY OF		NC	20,323	265	62
388	SILER CITY, CITY OF		NC	8,140	81	38.8
389	SMITHFIELD FARMLAND CORP-TAR HEEL DIV	1 of 8	NC	574	20	54.8
390	SMITHFIELD FARMLAND CORP-TAR HEEL DIV	2 of 8	NC	574	20	54.8
391	SMITHFIELD FARMLAND CORP-TAR HEEL DIV	3 of 8	NC	574	20	54.8
392	SMITHFIELD FARMLAND CORP-TAR HEEL DIV	4 of 8	NC	574	20	54.8
393	SMITHFIELD FARMLAND CORP-TAR HEEL DIV	5 of 8	NC	574	20	54.8
394	SMITHFIELD FARMLAND CORP-TAR HEEL DIV	6 of 8	NC	574	20	54.8
395	SMITHFIELD FARMLAND CORP-TAR HEEL DIV	7 of 8	NC	574	20	54.8
396	SMITHFIELD FARMLAND CORP-TAR HEEL DIV	8 of 8	NC	574	20	54.8
397	SMITHFIELD, TOWN OF		NC	12,900	1563	44.7
398	SNOW HILL, TOWN OF	1 of 5	NC	532	804	37.9
399	SNOW HILL, TOWN OF	2 of 5	NC	532	804	37.9
400	SNOW HILL, TOWN OF	3 of 5	NC	532	804	37.9
401	SNOW HILL, TOWN OF	4 of 5	NC	532	804	37.9
402	SNOW HILL, TOWN OF	5 of 5	NC	532	804	37.9
403	SOUTH GRANVILLE WTR&SEWER AUTHORITY		NC	19,216	23	66.6
404	SOUTHERN PINES, TOWN OF	1 of 5	NC	3,476	37	82.9
405	SOUTHERN PINES, TOWN OF	2 of 5	NC	3,476	37	82.6
406	SOUTHERN PINES, TOWN OF	3 of 5	NC	3,476	18	79.7
407	SOUTHERN PINES, TOWN OF	4 of 5	NC	3,476	18	79.7
408	SOUTHERN PINES, TOWN OF	5 of 5	NC	3,476	214	75.3
409	SPARTA, TOWN OF	1 of 9	NC	196	87	36.5
410	SPARTA, TOWN OF	2 of 9	NC	196	87	36.5
411	SPARTA, TOWN OF	3 of 9	NC	196	87	36.5
412	SPARTA, TOWN OF	4 of 9	NC	196	87	36.5
413	SPARTA, TOWN OF	5 of 9	NC	196	87	36.5
414	SPARTA, TOWN OF	6 of 9	NC	196	87	36.5
415	SPARTA, TOWN OF	7 of 9	NC	196	87	36.5
416	SPARTA, TOWN OF	8 of 9	NC	196	87	36.5
417	SPARTA, TOWN OF	9 of 9	NC	196	87	36.5
418	SPRUCE PINE, TOWN OF	1 of 4	NC	1,350	165	67.8
419	SPRUCE PINE, TOWN OF	2 of 4	NC	1,350	193	67.8

(continued)

**Table B.NC.1 (continued)—Public water system intakes receiving water from State and private forest land in North Carolina**

Intake ID	Public water system name	Intake number for system	State	Population served by intake	Total volume of surface water available to intake	Total surface water from State and private forest lands
					(million m <sup>3</sup> yr <sup>-1</sup> )	(percent)
420	SPRUCE PINE, TOWN OF	3 of 4	NC	1,350	193	67.8
421	SPRUCE PINE, TOWN OF	4 of 4	NC	1,350	193	67.8
422	STATESVILLE, CITY OF	1 of 2	NC	12,856	321	45.2
423	STATESVILLE, CITY OF	2 of 2	NC	12,856	1735	39.7
424	STOKES REGIONAL WATER CORP	1 of 2	NC	1,645	24	52.8
425	STOKES REGIONAL WATER CORP	2 of 2	NC	1,645	35	42.7
426	TABOR CITY, TOWN OF	1 of 3	NC	816	192	50.3
427	TABOR CITY, TOWN OF	2 of 3	NC	816	192	50.3
428	TABOR CITY, TOWN OF	3 of 3	NC	816	192	50.3
429	TARBORO, TOWN OF		NC	11,310	2081	58.2
430	THE VILLAGE OF BALD HEAD ISLAND	1 of 8	NC	243	9079	52.2
431	THE VILLAGE OF BALD HEAD ISLAND	2 of 8	NC	243	9079	52.2
432	THE VILLAGE OF BALD HEAD ISLAND	3 of 8	NC	243	9079	52.2
433	THE VILLAGE OF BALD HEAD ISLAND	4 of 8	NC	243	9079	52.2
434	THE VILLAGE OF BALD HEAD ISLAND	5 of 8	NC	243	9079	52.2
435	THE VILLAGE OF BALD HEAD ISLAND	6 of 8	NC	243	9079	52.2
436	THE VILLAGE OF BALD HEAD ISLAND	7 of 8	NC	243	9079	52.2
437	THE VILLAGE OF BALD HEAD ISLAND	8 of 8	NC	243	9079	52.2
438	THOMASVILLE, CITY OF		NC	26,418	71	26.3
439	TOWN OF FONTANA DAM		NC	950	2985	24.3
440	TROUTMAN, TOWN OF	1 of 3	NC	1,504	1956	39.1
441	TROUTMAN, TOWN OF	2 of 3	NC	1,504	1956	39.1
442	TROUTMAN, TOWN OF	3 of 3	NC	1,504	1956	39.1
443	TRYON, TOWN OF	1 of 4	NC	1,285	84	94.7
444	TRYON, TOWN OF	2 of 4	NC	1,285	84	94.7
445	TRYON, TOWN OF	3 of 4	NC	1,285	84	94.7
446	TRYON, TOWN OF	4 of 4	NC	1,285	84	94.7
447	TUCKASEIGEE WATER & SEWER AUTH		NC	6,262	560	47.8
448	TWO RIVERS UTILITIES		NC	82,585	2170	37.3
449	VALDESE, TOWN OF		NC	13,700	1295	38.3
450	WAYNESVILLE, TOWN OF		NC	15,046	54	60.5
451	WEATHERSTONE S/D		NC	120	41	45.1
452	WEAVERVILLE, TOWN OF		NC	6,535	163	47.5
453	WELDON WATER SYSTEM		NC	1,750	8396	18
454	WEST JEFFERSON, TOWN OF	1 of 11	NC	119	276	74.4
455	WEST JEFFERSON, TOWN OF	2 of 11	NC	119	276	74.4
456	WEST JEFFERSON, TOWN OF	3 of 11	NC	119	276	74.4
457	WEST JEFFERSON, TOWN OF	4 of 11	NC	119	276	74.4

(continued)

**Table B.NC.1 (continued)—Public water system intakes receiving water from State and private forest land in North Carolina**

Intake ID	Public water system name	Intake number for system	State	Population served by intake	Total volume of surface water available to intake	Total surface water from State and private forest lands
					(million m <sup>3</sup> yr <sup>-1</sup> )	(percent)
458	WEST JEFFERSON, TOWN OF	5 of 11	NC	119	276	74.4
459	WEST JEFFERSON, TOWN OF	6 of 11	NC	119	276	74.4
460	WEST JEFFERSON, TOWN OF	7 of 11	NC	119	276	74.4
461	WEST JEFFERSON, TOWN OF	8 of 11	NC	119	331	53.1
462	WEST JEFFERSON, TOWN OF	9 of 11	NC	119	331	53.1
463	WEST JEFFERSON, TOWN OF	10 of 11	NC	119	331	53.1
464	WEST JEFFERSON, TOWN OF	11 of 11	NC	119	331	53.1
465	WESTERN CAROLINA UNIV WTP		NC	9,200	560	47.8
466	WILKESBORO, TOWN OF		NC	3,705	483	76.3
467	WILLIAMSTON, TOWN OF	1 of 6	NC	1,275	129	62.2
468	WILLIAMSTON, TOWN OF	2 of 6	NC	1,275	129	62.2
469	WILLIAMSTON, TOWN OF	3 of 6	NC	1,275	131	42.9
470	WILLIAMSTON, TOWN OF	4 of 6	NC	1,275	9171	21.3
471	WILLIAMSTON, TOWN OF	5 of 6	NC	1,275	9171	21.3
472	WILLIAMSTON, TOWN OF	6 of 6	NC	1,275	9171	21.3
473	WILSON, CITY OF	1 of 2	NC	25,544	281	45.2
474	WILSON, CITY OF	2 of 2	NC	25,544	109	34.4
475	WINSTON-SALEM, CITY OF	1 of 3	NC	107,000	1912	59
476	WINSTON-SALEM, CITY OF	2 of 3	NC	107,000	2526	53.1
477	WINSTON-SALEM, CITY OF	3 of 3	NC	107,000	53	30.4
478	WINTERVILLE, TOWN OF	1 of 3	NC	3,300	100	45.8
479	WINTERVILLE, TOWN OF	2 of 3	NC	3,300	52	40.1
480	WINTERVILLE, TOWN OF	3 of 3	NC	3,300	52	40.1
481	WOODFIN SANITARY WATER AND SEWER		NC	9,000	36	51.8
482	YADKINVILLE, TOWN OF	1 of 2	NC	2,089	141	36
483	YADKINVILLE, TOWN OF	2 of 2	NC	2,089	52	31.6
484	YANCEYVILLE, TOWN OF		NC	2,716	50	78.7
485	ALBERTVILLE UTILITIES BOARD		AL	29,991	33 666	9
486	ARAB WATER WORKS BOARD		AL	17,400	33 925	8.9
487	BRIDGEPORT UTILITIES BOARD		AL	6,000	31 408	9.7
488	CHEROKEE WATER & GAS DEPARTMENT		AL	2,250	44 213	6.9
489	COLBERT COUNTY RURAL WATER SYSTEM		AL	10,731	44 111	6.9
490	DECATUR (MUNICIPAL UTILITIES BOARD OF)		AL	77,100	37 685	8
491	DEKALB-JACKSON WATER SUPPLY DISTRICT		AL	15,390	31 628	9.6
492	FLORENCE WATER-WASTEWATER DEPARTMENT	1 of 2	AL	16,725	43 221	7
493	FLORENCE WATER-WASTEWATER DEPARTMENT	2 of 2	AL	16,725	43 221	7
494	FORT PAYNE WATER WORKS BOARD		AL	7,572	32 714	9.3
495	GREENHILL WATER & FIRE PRO AUTHORITY	1 of 2	AL	3,897	43 221	7
496	GREENHILL WATER & FIRE PRO AUTHORITY	2 of 2	AL	3,897	43 221	7
497	GUNTERSVILLE WATER WORKS & SEWER BOARD	1 of 2	AL	6,306	33 925	8.9
498	GUNTERSVILLE WATER WORKS & SEWER BOARD	2 of 2	AL	6,306	33 925	8.9

(continued)

**Table B.NC.1 (continued)—Public water system intakes receiving water from State and private forest land in North Carolina**

Intake ID	Public water system name	Intake number for system	State	Population served by intake	Total volume of surface water available to intake	Total surface water from State and private forest lands
					(million m <sup>3</sup> yr <sup>-1</sup> )	(percent)
499	HUNTSVILLE UTILITIES	1 of 2	AL	31,310	35 642	8.5
500	HUNTSVILLE UTILITIES	2 of 2	AL	31,310	36 810	8.2
501	LIMESTONE COUNTY WATER SYSTEM		AL	14,625	37 877	8
502	MADISON WATER WORKS & SEWER	1 of 3	AL	3,255	36 810	8.2
503	MADISON WATER WORKS & SEWER	2 of 3	AL	3,255	36 810	8.2
504	MADISON WATER WORKS & SEWER	3 of 3	AL	3,255	36 810	8.2
505	MUSCLE SHOALS UTILITY BOARD		AL	18,303	43 221	7
506	NORTH MARSHALL UTILITIES		AL	12,369	33 925	8.9
507	NORTHEAST ALABAMA WATER SYSTEM	1 of 3	AL	10,653	32 714	9.3
508	NORTHEAST ALABAMA WATER SYSTEM	2 of 3	AL	10,653	32 714	9.3
509	NORTHEAST ALABAMA WATER SYSTEM	3 of 3	AL	10,653	33 666	9
510	SCOTTSBORO WATER WORKS	1 of 2	AL	10,940	32 714	9.3
511	SCOTTSBORO WATER WORKS	2 of 2	AL	10,940	32 714	9.3
512	SECTION-DUTTON WATER SYSTEM		AL	32,949	32 714	9.3
513	SHEFFIELD UTILITIES DEPARTMENT		AL	14,574	44 111	6.9
514	US ARMY AVIATION & MISSILE COMMAND	1 of 2	AL	14,250	35 642	8.5
515	US ARMY AVIATION & MISSILE COMMAND	2 of 2	AL	14,250	35 642	8.5
516	WEST MORGAN-EAST LAWRENCE WATER AUTHORIT		AL	26,130	38 009	8
517	WISE METALS GROUP, LLC (CONSTELLIUM)		AL	2,400	43 221	7
518	AUGUSTA-RICHMOND CO WS	1 of 16	GA	9,715	8126	3.7
519	AUGUSTA-RICHMOND CO WS	2 of 16	GA	9,715	8126	3.7
520	AUGUSTA-RICHMOND CO WS	3 of 16	GA	9,715	8948	3.3
521	AUGUSTA-RICHMOND CO WS	4 of 16	GA	9,715	8948	3.3
522	AUGUSTA-RICHMOND CO WS	5 of 16	GA	9,715	8948	3.3
523	AUGUSTA-RICHMOND CO WS	6 of 16	GA	9,715	8948	3.3
524	AUGUSTA-RICHMOND CO WS	7 of 16	GA	9,715	8948	3.3
525	AUGUSTA-RICHMOND CO WS	8 of 16	GA	9,715	8948	3.3
526	AUGUSTA-RICHMOND CO WS	9 of 16	GA	9,715	8948	3.3
527	AUGUSTA-RICHMOND CO WS	10 of 16	GA	9,715	8948	3.3
528	AUGUSTA-RICHMOND CO WS	11 of 16	GA	9,715	8948	3.3
529	AUGUSTA-RICHMOND CO WS	12 of 16	GA	9,715	8948	3.3
530	AUGUSTA-RICHMOND CO WS	13 of 16	GA	9,715	8948	3.3
531	AUGUSTA-RICHMOND CO WS	14 of 16	GA	9,715	8948	3.3
532	AUGUSTA-RICHMOND CO WS	15 of 16	GA	9,715	8948	3.3
533	AUGUSTA-RICHMOND CO WS	16 of 16	GA	9,715	8948	3.3
534	BLUE RIDGE WATER SYSTEM		GA	6,112	734	3.9
535	COLUMBIA COUNTY	1 of 2	GA	33,989	7335	4.1
536	COLUMBIA COUNTY	2 of 2	GA	33,989	8037	3.7
537	EFFINGHAM COUNTY SURFACE WATER SYSTEM	1 of 6	GA	1,645	10 782	2.8
538	EFFINGHAM COUNTY SURFACE WATER SYSTEM	2 of 6	GA	1,645	10 782	2.8
539	EFFINGHAM COUNTY SURFACE WATER SYSTEM	3 of 6	GA	1,645	10 782	2.8
540	EFFINGHAM COUNTY SURFACE WATER SYSTEM	4 of 6	GA	1,645	10 782	2.8
541	EFFINGHAM COUNTY SURFACE WATER SYSTEM	5 of 6	GA	1,645	10 782	2.8
542	EFFINGHAM COUNTY SURFACE WATER SYSTEM	6 of 6	GA	1,645	10 782	2.8
543	HARTWELL		GA	7,116	3507	8.5

(continued)

**Table B.NC.1 (continued)—Public water system intakes receiving water from State and private forest land in North Carolina**

Intake ID	Public water system name	Intake number for system	State	Population served by intake	Total volume of surface water available to intake	Total surface water from State and private forest lands
					(million m <sup>3</sup> yr <sup>-1</sup> )	(percent)
544	LAVONIA		GA	4,095	3414	8.7
545	LINCOLNTON		GA	1,657	6066	4.9
546	MCCAYSVILLE		GA	7,020	734	3.9
547	POOLER	1 of 2	GA	4,238	10 782	2.8
548	POOLER	2 of 2	GA	4,238	10 782	2.8
549	RINCON		GA	9,880	10 594	2.8
550	SANDERS MOBILE HOME PARK	1 of 2	GA	117	3507	8.5
551	SANDERS MOBILE HOME PARK	2 of 2	GA	117	3507	8.5
552	SAVANNAH-I & D	1 of 4	GA	2,625	10 594	2.8
553	SAVANNAH-I & D	2 of 4	GA	2,625	10 782	2.8
554	SAVANNAH-I & D	3 of 4	GA	2,625	10 782	2.8
555	SAVANNAH-I & D	4 of 4	GA	2,625	10 782	2.8
556	IL AMERICAN-CAIRO	1 of 3	IL	974	260,792	1.4
557	IL AMERICAN-CAIRO	2 of 3	IL	974	260,792	1.4
558	IL AMERICAN-CAIRO	3 of 3	IL	974	260,792	1.4
559	EVANSVILLE WATER UTILITY		IN	162,000	130,549	0.5
560	MOUNT VERNON WATER WORKS		IN	8,912	130,758	0.5
561	SANTA CLAUS WATER UTILITY	1 of 2	IN	1,842	116,536	0.5
562	SANTA CLAUS WATER UTILITY	2 of 2	IN	1,842	116,536	0.5
563	STUCKER FORK WATER UTILITY	1 of 4	IN	3,775	107,972	0.5
564	STUCKER FORK WATER UTILITY	2 of 4	IN	3,775	107,972	0.5
565	STUCKER FORK WATER UTILITY	3 of 4	IN	3,775	107,972	0.5
566	STUCKER FORK WATER UTILITY	4 of 4	IN	3,775	107,972	0.5
567	ASHLAND WATER WORKS		KY	44,402	72 056	0.8
568	FLUOR FEDERAL SERVICES INC.		KY	2,000	259,996	1.4
569	HARDIN CO. WATER DIST #1/FT. KNOX	1 of 2	KY	4,720	113,446	0.5
570	HARDIN CO. WATER DIST #1/FT. KNOX	2 of 2	KY	4,720	113,446	0.5
571	HARDIN COUNTY WATER DISTRICT #1		KY	6,759	113,446	0.5
572	HENDERSON MUNICIPAL WATER & SEWER		KY	31,705	130,549	0.5
573	LEDBETTER WATER DISTRICT		KY	3,742	259,689	1.4
574	LOUISVILLE WATER COMPANY	1 of 6	KY	109,253	108,366	0.5
575	LOUISVILLE WATER COMPANY	2 of 6	KY	109,253	108,366	0.5
576	LOUISVILLE WATER COMPANY	3 of 6	KY	109,253	108,366	0.5
577	LOUISVILLE WATER COMPANY	4 of 6	KY	109,253	108,366	0.5
578	LOUISVILLE WATER COMPANY	5 of 6	KY	109,253	108,601	0.5
579	LOUISVILLE WATER COMPANY	6 of 6	KY	109,253	108,601	0.5
580	MAYSVILLE UTILITY COMMISSION		KY	13,600	82 245	0.7
581	MORGANFIELD WATER WORKS		KY	5,170	130,758	0.5
582	PADUCAH WATER WORKS	1 of 4	KY	9,145	57 884	5.2
583	PADUCAH WATER WORKS	2 of 4	KY	9,145	57 884	5.2
584	PADUCAH WATER WORKS	3 of 4	KY	9,145	57 884	5.2
585	PADUCAH WATER WORKS	4 of 4	KY	9,145	259,689	1.4
586	RUSSELL WATER COMPANY		KY	6,810	72 205	0.8
587	VANCEBURG ELECTRIC PLANT BOARD	1 of 6	KY	1,154	81 383	0.7
588	VANCEBURG ELECTRIC PLANT BOARD	2 of 6	KY	1,154	81 383	0.7

(continued)

**Table B.NC.1 (continued)—Public water system intakes receiving water from State and private forest land in North Carolina**

Intake ID	Public water system name	Intake number for system	State	Population served by intake	Total volume of surface water available to intake	Total surface water from State and private forest lands
					(million m <sup>3</sup> yr <sup>-1</sup> )	(percent)
589	VANCEBURG ELECTRIC PLANT BOARD	3 of 6	KY	1,154	81 383	0.7
590	VANCEBURG ELECTRIC PLANT BOARD	4 of 6	KY	1,154	81 383	0.7
591	VANCEBURG ELECTRIC PLANT BOARD	5 of 6	KY	1,154	81 383	0.7
592	VANCEBURG ELECTRIC PLANT BOARD	6 of 6	KY	1,154	81 383	0.7
593	WESTERN LEWIS RECTORVILLE WATER DISTRICT	1 of 2	KY	3,267	82 245	0.7
594	WESTERN LEWIS RECTORVILLE WATER DISTRICT	2 of 2	KY	3,267	82 245	0.7
595	WORTHINGTON MUNICIPAL WATER WORKS	1 of 3	KY	558	72 205	0.8
596	WORTHINGTON MUNICIPAL WATER WORKS	2 of 3	KY	558	72 205	0.8
597	WORTHINGTON MUNICIPAL WATER WORKS	3 of 3	KY	558	72 205	0.8
598	ALMATIS		LA	400	709,254	0.5
599	BELLE CHASSE WATER DISTRICT		LA	17,391	709,344	0.5
600	DALCOUR WATERWORKS DISTRICT		LA	925	709,344	0.5
601	DOMINO SUGAR		LA	360	709,344	0.5
602	DOW USA, LA DIVISION		LA	3,960	709,151	0.5
603	E JEFFERSON WW DISTRICT 1		LA	243,782	709,344	0.5
604	GRAMERCY WATERWORKS		LA	3,613	709,254	0.5
605	GRETNAL WATERWORKS		LA	17,802	709,344	0.5
606	LUTCHER WATERWORKS		LA	4,781	709,254	0.5
607	MARATHON PETROLEUM COMPANY LLC		LA	817	709,254	0.5
608	NEW ORLEANS CARROLLTON WW	1 of 2	LA	145,522	709,344	0.5
609	NEW ORLEANS CARROLLTON WW	2 of 2	LA	145,522	709,344	0.5
610	NEW ORLEANS ALGIERS WATER WORKS	1 of 2	LA	26,393	709,344	0.5
611	NEW ORLEANS ALGIERS WATER WORKS	2 of 2	LA	26,393	709,344	0.5
612	NORANDA ALUMINA, LLC		LA	500	709,254	0.5
613	POINTE A LA HACHE WATER SYSTEM		LA	653	709,344	0.5
614	PORT SULPHUR WATER DISTRICT	1 of 2	LA	4,611	709,344	0.5
615	PORT SULPHUR WATER DISTRICT	2 of 2	LA	4,611	709,398	0.5
616	SHELL CHEMICAL COMPANY		LA	1,002	709,254	0.5
617	ST BERNARD PARISH WATERWORKS		LA	44,000	709,344	0.5
618	ST CHARLES WATER DISTRICT 1 EAST BANK		LA	29,517	709,344	0.5
619	ST CHARLES WATER DISTRICT 2 WEST BANK		LA	31,485	709,344	0.5
620	ST JAMES WATER DISTRICT 1		LA	6,120	709,254	0.5
621	ST JAMES WATER DISTRICT 2		LA	9,392	709,254	0.5
622	ST JOHN WATER DISTRICT 1		LA	12,577	709,254	0.5
623	ST JOHN WATER DISTRICT 2		LA	3,702	709,254	0.5
624	W JEFFERSON WW DISTRICT 2	1 of 2	LA	94,385	709,344	0.5
625	W JEFFERSON WW DISTRICT 2	2 of 2	LA	94,385	709,344	0.5
626	SHORT COLEMAN PARK-NASA PLANT		MS	461	45 990	6.6
627	CINCINNATI PUBLIC WATER SYSTEM	1 of 3	OH	44,059	83 376	0.7
628	CINCINNATI PUBLIC WATER SYSTEM	2 of 3	OH	44,059	83 376	0.7
629	CINCINNATI PUBLIC WATER SYSTEM	3 of 3	OH	44,059	83 376	0.7
630	CLERMONT PUBLIC WATER SYSTEM	1 of 6	OH	4,539	83 376	0.7
631	CLERMONT PUBLIC WATER SYSTEM	2 of 6	OH	4,539	83 376	0.7
632	CLERMONT PUBLIC WATER SYSTEM	3 of 6	OH	4,539	83 376	0.7
633	CLERMONT PUBLIC WATER SYSTEM	4 of 6	OH	4,539	83 376	0.7

(continued)

**Table B.NC.1 (continued)—Public water system intakes receiving water from State and private forest land in North Carolina**

Intake ID	Public water system name	Intake number for system	State	Population served by intake	Total volume of surface water available to intake	Total surface water from State and private forest lands
					(million m <sup>3</sup> yr <sup>-1</sup> )	(percent)
634	CLERMONT PUBLIC WATER SYSTEM	5 of 6	OH	4,539	83 376	0.7
635	CLERMONT PUBLIC WATER SYSTEM	6 of 6	OH	4,539	83 376	0.7
636	HECLA WATER ASSOCIATION-PLANT PWS	1 of 8	OH	4,131	66 527	0.9
637	HECLA WATER ASSOCIATION-PLANT PWS	2 of 8	OH	4,131	66 527	0.9
638	HECLA WATER ASSOCIATION-PLANT PWS	3 of 8	OH	4,131	66 527	0.9
639	HECLA WATER ASSOCIATION-PLANT PWS	4 of 8	OH	4,131	66 527	0.9
640	HECLA WATER ASSOCIATION-PLANT PWS	5 of 8	OH	4,131	66 527	0.9
641	HECLA WATER ASSOCIATION-PLANT PWS	6 of 8	OH	4,131	66 527	0.9
642	HECLA WATER ASSOCIATION-PLANT PWS	7 of 8	OH	4,131	66 527	0.9
643	HECLA WATER ASSOCIATION-PLANT PWS	8 of 8	OH	4,131	66 527	0.9
644	IRONTON PWS		OH	11,129	72 205	0.8
645	PORTSMOUTH PUBLIC WATER SYSTEM		OH	40,475	80 988	0.7
646	ANDERSON REGIONAL JOINT WS (SC0420011)		SC	25	1665	14.8
647	BJW&SA (0720003)	1 of 4	SC	12,693	10 594	2.8
648	BJW&SA (0720003)	2 of 4	SC	12,693	10 594	2.8
649	BJW&SA (0720003)	3 of 4	SC	12,693	10 782	2.8
650	BJW&SA (0720003)	4 of 4	SC	12,693	10 782	2.8
651	CAMDEN CITY OF (2810001)		SC	13,616	4769	29.6
652	CARLISLE CONE MILLS (4430003)		SC	125	3292	39
653	CATAWBA RIVER WSP (2920002)		SC	25	4000	34.8
654	CHERAW TOWN OF (1310001)		SC	6,595	7221	45
655	CHESTER METROPOLITAN DISTRICT (1220002)		SC	12,731	4552	31
656	FLORENCE CITY OF (2110001)		SC	5,507	7654	42.4
657	GAFFNEY BPW (1110001)		SC	10,152	1645	64.6
658	GCWSD WACCAMAW NECK (2220010)		SC	34,367	16 846	30.2
659	GREENVILLE WATER (2310001)		SC	109,560	774	31.8
660	GSW&SA (2620004)	1 of 7	SC	18,341	62	69.2
661	GSW&SA (2620004)	2 of 7	SC	18,341	1575	48.9
662	GSW&SA (2620004)	3 of 7	SC	18,341	1575	48.9
663	GSW&SA (2620004)	4 of 7	SC	18,341	1612	47.7
664	GSW&SA (2620004)	5 of 7	SC	18,341	1612	47.7
665	GSW&SA (2620004)	6 of 7	SC	18,341	1795	42.9
666	GSW&SA (2620004)	7 of 7	SC	18,341	13 070	33.1
667	INVISTA (SC2830001)		SC	1,400	5077	27.8
668	JENKINSVILLE WATER COMPANY (2020001)		SC	418	5012	25.6
669	LAKE MARION REGIONAL WATER PLT (3820003)		SC	25	14 431	18.7
670	LUGOFF ELGIN WATER AUTH (2820001)		SC	19,671	4769	29.6
671	MCCORMICK CPW (3510001)		SC	2,013	6066	4.9
672	NORTH AUGUSTA CITY OF (0210003)		SC	27,127	8126	3.7
673	ROCK HILL CITY OF (SC4610002)		SC	67,520	3378	37.4
674	SALEM TOWN OF (3710001)	1 of 3	SC	570	425	57.9
675	SALEM TOWN OF (3710001)	2 of 3	SC	570	425	57.9
676	SALEM TOWN OF (3710001)	3 of 3	SC	570	425	57.9
677	SPARTANBURG WATER SYSTEM (4210001)		SC	130,929	309	41.4
678	SWS-LANDRUM WTP (4210003)		SC	2,011	84	94.7

(continued)

**Table B.NC.1 (continued)—Public water system intakes receiving water from State and private forest land in North Carolina**

Intake ID	Public water system name	Intake number for system	State	Population served by intake	Total volume of surface water available to intake	Total surface water from State and private forest lands
					(million m <sup>3</sup> yr <sup>-1</sup> )	(percent)
679	UNION CITY OF (4410001)		SC	5,884	3121	41.2
680	WEST COLUMBIA CITY OF (3210004)		SC	14,622	7949	16.2
681	129 MOTORCYCLE PIT STOP		TN	50	3900	20.6
682	BUSH BROTHERS #3		TN	330	5754	29.3
683	CAMDEN WATER DEPT		TN	9,629	54 712	5.5
684	CARDERVIEW UTILITY DISTRICT	1 of 3	TN	354	577	31.7
685	CARDERVIEW UTILITY DISTRICT	2 of 3	TN	354	577	31.7
686	CARDERVIEW UTILITY DISTRICT	3 of 3	TN	354	577	31.7
687	CHEMOURS-NEW JOHNSONVILLE PLANT		TN	750	54 799	5.5
688	CIRCLE VALLEY TRAILER PARK		TN	50	23 599	11.3
689	CLEVELAND UTILITIES		TN	40,663	3532	10.2
690	CLIFTON WATER DEPT		TN	3,843	48 212	6.3
691	COPPER BASIN UTILITY DISTRICT		TN	2,821	836	3.5
692	DAYTON WATER DEPT		TN	22,981	28 194	10.8
693	DECATUR WATER DEPT	1 of 2	TN	2,924	23 599	11.3
694	DECATUR WATER DEPT	2 of 2	TN	2,924	23 599	11.3
695	EASTSIDE UTILITY DISTRICT		TN	55,753	28 582	10.6
696	ELIZABETHTON WATER DEPT		TN	10,865	970	18.8
697	ERWIN UTILITIES		TN	4,210	1087	44.3
698	ETOWAH UTILITIES		TN	12,168	2116	15.7
699	FIRST U D OF HAWKINS CO	1 of 2	TN	9,599	3193	5.7
700	FIRST U D OF HAWKINS CO	2 of 2	TN	9,599	3193	5.7
701	FIRST U.D. OF HARDIN COUNTY		TN	6,698	46 372	6.5
702	FIRST UTIL DIST OF KNOX COUNTY	1 of 2	TN	44,089	11 672	16
703	FIRST UTIL DIST OF KNOX COUNTY	2 of 2	TN	44,089	11 672	16
704	GREENEVILLE WATER & LIGHT COMM		TN	26,890	1398	34.5
705	HIWASSEE UTILITY COMMISSION		TN	98	3532	10.2
706	JEFFERSON CITY WATER & SEWER C	1 of 2	TN	4,469	3804	4.8
707	JEFFERSON CITY WATER & SEWER C	2 of 2	TN	4,469	3804	4.8
708	JOHNSON CITY WATER DEPT		TN	53,575	970	18.8
709	JONESBOROUGH WATER DEPT		TN	29,040	1178	40.9
710	KINGSPORT WATER DEPT		TN	107,666	2361	7.7
711	KINGSTON WATER SYSTEM		TN	4,954	23 075	11.6
712	KNOX-CHAPMAN UTILITY DISTRICT		TN	33,130	6536	25.8
713	KNOXVILLE UTILITIES BOARD-KUB		TN	236,326	11 483	16.3
714	LAKEVIEW UTILITY DISTRICT	1 of 2	TN	527	3366	5.4
715	LAKEVIEW UTILITY DISTRICT	2 of 2	TN	527	3366	5.4
716	LENOIR CITY UTILITY BOARD	1 of 2	TN	11,665	16 376	16.3
717	LENOIR CITY UTILITY BOARD	2 of 2	TN	11,665	16 376	16.3
718	LOUDON UTILITIES BOARD	1 of 2	TN	6,368	16 376	16.3
719	LOUDON UTILITIES BOARD	2 of 2	TN	6,368	16 376	16.3
720	LUTTRELL-BLAINE-CORRYTON U.D.		TN	1,807	3842	4.8
721	MORRISTOWN WATER SYSTEM		TN	18,248	3636	5
722	NEWPORT UTILITIES BOARD		TN	30,364	2498	38.1
723	NORTHEAST KNOX U D		TN	23,041	4161	4.4

(continued)

**Table B.NC.1 (continued)—Public water system intakes receiving water from State and private forest land in North Carolina**

Intake ID	Public water system name	Intake number for system	State	Population served by intake	Total volume of surface water available to intake	Total surface water from State and private forest lands
					(million m <sup>3</sup> yr <sup>-1</sup> )	(percent)
724	OLIN CORPORATION		TN	600	3975	9.1
725	PARSONS WATER DEPARTMENT		TN	1,989	49 041	6.2
726	PERSIA UTILITY DISTRICT		TN	4,486	3431	5.3
727	PIGEON FORGE WATER DEPARTMENT		TN	6,552	5754	29.3
728	RESOLUTE FOREST PRODUCTS		TN	460	3532	10.2
729	RIVER LANDING CONDOMINIUM ASSOC		TN	52	30 014	10.1
730	RIVERSIDE CATFISH HOUSE		TN	30	30 014	10.1
731	ROCKWOOD WATER SYSTEM		TN	11,594	23 075	11.6
732	ROGERSVILLE WATER SYSTEM		TN	3,728	3431	5.3
733	SEVIERVILLE WATER SYSTEM		TN	30,579	6450	26.1
734	SHADY GROVE HARBOR MARINA		TN	30	28 416	10.7
735	SOUTH BLOUNT UTILITY DISTRICT		TN	41,187	3900	20.6
736	SOUTH PITTSBURG WATER SYSTEM		TN	6,552	31 408	9.7
737	SURGOINSVILLE UTILITY DISTRICT	1 of 2	TN	1,203	3366	5.4
738	SURGOINSVILLE UTILITY DISTRICT	2 of 2	TN	1,203	3366	5.4
739	TELLICO AREA SERVICES SYSTEM		TN	11,822	3900	20.6
740	TENNESSEE AMERICAN WATER		TN	189,009	29 891	10.1
741	WATAUGA RIVER REGIONAL WATER AUATHORITY	1 of 2	TN	205	577	31.7
742	WATAUGA RIVER REGIONAL WATER AUATHORITY	2 of 2	TN	205	970	18.8
743	WATTS BAR UTILITY DISTRICT	1 of 3	TN	4,266	23 347	11.4
744	WATTS BAR UTILITY DISTRICT	2 of 3	TN	4,266	23 347	11.4
745	WATTS BAR UTILITY DISTRICT	3 of 3	TN	4,266	23 347	11.4
746	WEST STEWART UTILITY DISTRICT	1 of 5	TN	88	56 262	5.4
747	WEST STEWART UTILITY DISTRICT	2 of 5	TN	88	56 262	5.4
748	WEST STEWART UTILITY DISTRICT	3 of 5	TN	88	56 262	5.4
749	WEST STEWART UTILITY DISTRICT	4 of 5	TN	88	56 262	5.4
750	WEST STEWART UTILITY DISTRICT	5 of 5	TN	88	56 262	5.4
751	WHITE PINE WATER SYSTEM	1 of 2	TN	961	5581	30.2
752	WHITE PINE WATER SYSTEM	2 of 2	TN	961	5581	30.2
753	WITT UTILITY DISTRICT		TN	2,595	2022	23.8
754	CLARKSVILLE, TOWN OF		VA	1,400	7463	16
755	DANVILLE, CITY OF		VA	43,055	2021	34.2
756	FRIES, TOWN OF		VA	484	1498	39.4
757	HCSA- LEIGH STREET PLANT		VA	9,364	3495	26.8
758	I-77 EXIT 1	1 of 3	VA	109	33	64
759	I-77 EXIT 1	2 of 3	VA	109	73	56.4
760	I-77 EXIT 1	3 of 3	VA	109	73	56.4
761	NARROWS, TOWN OF		VA	1,259	4135	14.3
762	NORFOLK, CITY OF	1 of 3	VA	11,154	8323	17.6
763	NORFOLK, CITY OF	2 of 3	VA	11,154	8323	17.6
764	NORFOLK, CITY OF	3 of 3	VA	11,154	8323	17.6
765	PULASKI COUNTY PSA		VA	9,452	2643	22.3
766	RADFORD ARMY AMMUNITION PLANT	1 of 2	VA	801	3212	18.4
767	RADFORD ARMY AMMUNITION PLANT	2 of 2	VA	801	3212	18.4
768	RADFORD, CITY OF		VA	15,859	3147	18.8

(continued)

**Table B.NC.1 (continued)—Public water system intakes receiving water from State and private forest land in North Carolina**

Intake ID	Public water system name	Intake number for system	State	Population served by intake	Total volume of surface water available to intake	Total surface water from State and private forest lands
					(million m <sup>3</sup> yr <sup>-1</sup> )	(percent)
769	ROANOKE RIVER SERVICE AUTHORITY		VA	215	7970	16.6
770	ARMSTRONG PSD		WV	2,208	10 261	5.8
771	BLUESTONE CAMP AND RETREAT		WV	200	6886	8.6
772	CEDAR GROVE, COMMUNITY OF		WV	960	10 505	5.6
773	KANAWHA FALLS COMMUNITY WATER		WV	55	10 261	5.8
774	KANAWHA FALLS PSD		WV	2,514	10 261	5.8
775	WVAWC - HUNTINGTON DIST	1 of 4	WV	21,064	66 527	0.9
776	WVAWC - HUNTINGTON DIST	2 of 4	WV	21,064	66 527	0.9
777	WVAWC - HUNTINGTON DIST	3 of 4	WV	21,064	66 527	0.9
778	WVAWC - HUNTINGTON DIST	4 of 4	WV	21,064	66 527	0.9
779	WVAWC BLUESTONE PLANT		WV	26,499	6886	8.6
780	WVAWC NEW RIVER REGIONAL WTR TRTMT PLT		WV	25,585	7704	7.7