

Contributions of State and private forest
lands to surface drinking water supply:

ALABAMA

**This file compiles State-specific excerpts from
appendices A and B of the following report:**

Liu, Ning; Dobbs, G. Rebecca; Caldwell, Peter V.; Miniati, Chelcy Ford; Bolstad, Paul V.; Nelson, Stacy; Sun, Ge. 2020. Quantifying the role of State and private forest lands in providing surface drinking water supply for the Southern United States. Gen. Tech. Rep. SRS-248. Asheville, NC: U.S. Department of Agriculture Forest Service, Southern Research Station. 405 p. <https://doi.org/10.2737/SRS-GTR-248>.

Appendix A—Detailed information regarding forest ownership, water yield, surface drinking water intakes, and percent of water originating on State and private forest (SPF) lands in Alabama.

Table B.AL.1—Public water system intakes receiving water from State and private forest land in Alabama.

STATE OF ALABAMA

Summary

State and private forest (SPF) lands cover about two-thirds of Alabama (figs. A.AL.1 and A.AL.2; table A.AL.1). About 63.6 percent of all Alabama surface water originates on SPF lands (fig. A.AL.3). The majority of SPF land area is in, and surface water is from, family-owned forests, accounting for about 60.4 percent of the land area of SPF and 60.5 percent of surface water from SPF. Corporate-owned forests contribute 34.5 percent of surface water from SPF and account for 34.7 percent of land area of SPF. Average annual water yield in Alabama is about 545 mm (fig. A.AL.4). Alabama has a total of 315 surface drinking water intakes where at least some available water comes from SPF (fig. A.AL.5). About 70.3 percent of the total population of Alabama is served by surface drinking water overall, and Alabama SPF surface drinking water serves about 70.2 percent of the State population, or 3.4 million people, to some degree. About 1.5 million people in Alabama are getting more than half of their surface drinking

water from SPF within the State (fig. A.AL.6). State and private forest lands in Alabama also supply water to 77 surface drinking water intakes in other States (Florida, Georgia, Illinois, Kentucky, Louisiana, Mississippi, and Tennessee) (fig. A.AL.7), which collectively serve about 1.6 million people in 50 communities (fig. A.AL.8). Many public water systems in Alabama utilize more than one surface drinking water intake; these systems are shown (intakes aggregated) in figure A.AL.9 by population served (symbol size) and percentage of water from SPF lands in Alabama (symbol color). The Birmingham detail map (fig. A.AL.10) adds clarity on the hydrology, surface drinking water intakes, water originating on SPF lands, and population centers in an area where there is complex intersection between public water supply systems and population served. A case study (fig. A.AL.11) of the Tuscaloosa Water & Sewer public water supply system presents an example of the important role SPF lands play in providing water supply to a single community in Alabama, where three surface drinking water intakes receive about 82.9 percent of their water from SPF and serve about 0.2 million people.

Table A.AL.1—Land area by land cover and forest ownership type in Alabama		
Land cover	Land area (km ²)	Land area (acres)
Forest	96 212	23,774,675
Nonforest	41 626	10,286,035
Forest ownership type ^a	Land area (km ²)	Land area (acres)
Federal (public)	5449	1,346,572
Tribal (public)	<1	139
State (public)	2982	736,923
Local (public)	745	184,140
Corporate (private)	31 540	7,793,705
Family (private)	54 809	13,543,685
Other private	686	169,511

^aState and private forest land comprises State, local, corporate, family, and other private (the last two also referred to together as nonindustrial private forest, or NIPF). Corporate ownership lands include forest land owned by forest industry as well as other corporate entities such as Timber Investment Management Organizations and Real Estate Investment Trusts (TIMOs and REITs, respectively).

Alabama Forested Lands by Ownership

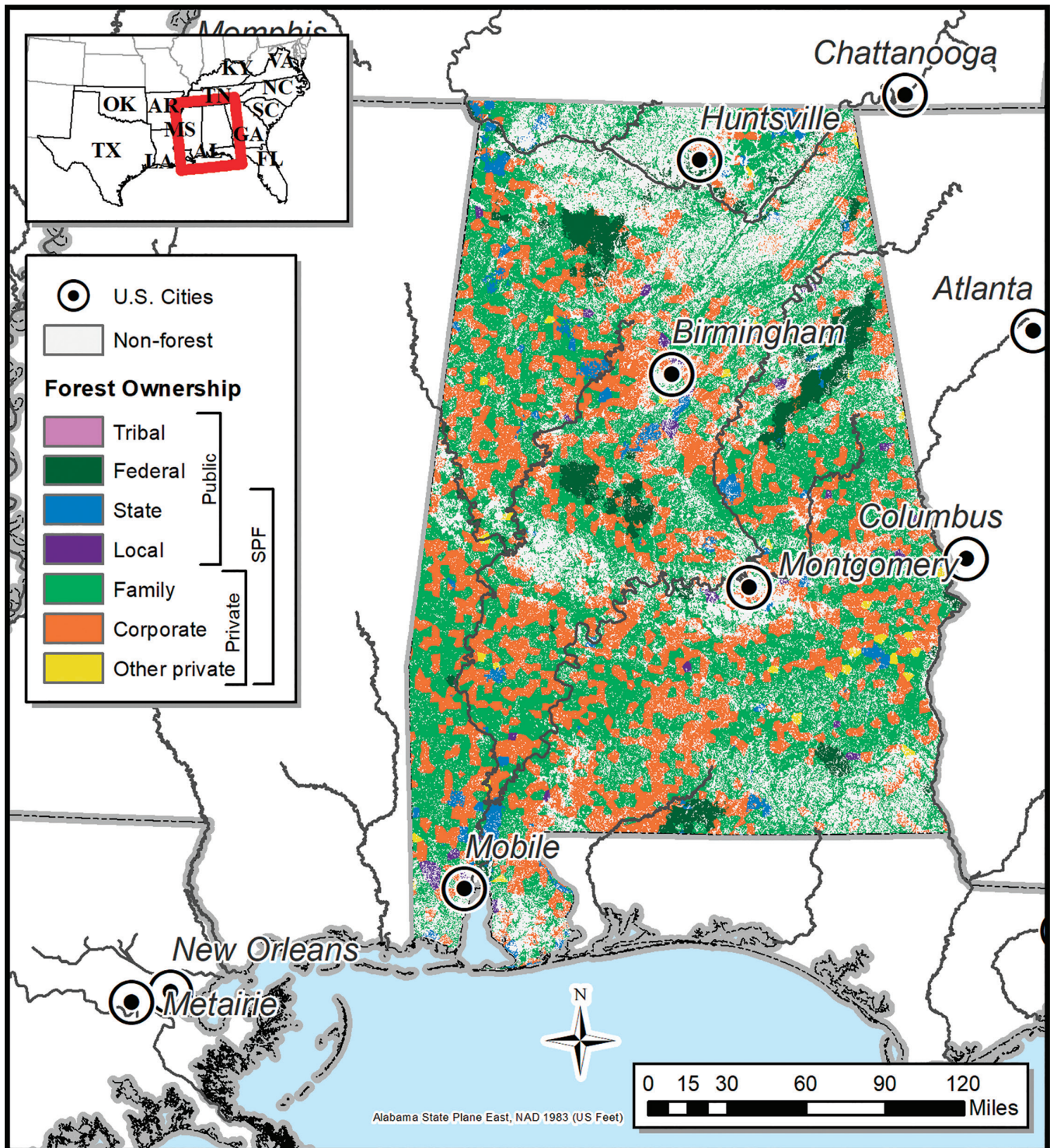


Figure A.AL.1—Alabama nonforest land and forest lands by ownership, ca. 2014. Forest ownership data source: raster dataset by Hewes and others (2017); see report for more discussion of data derivation and accuracy.

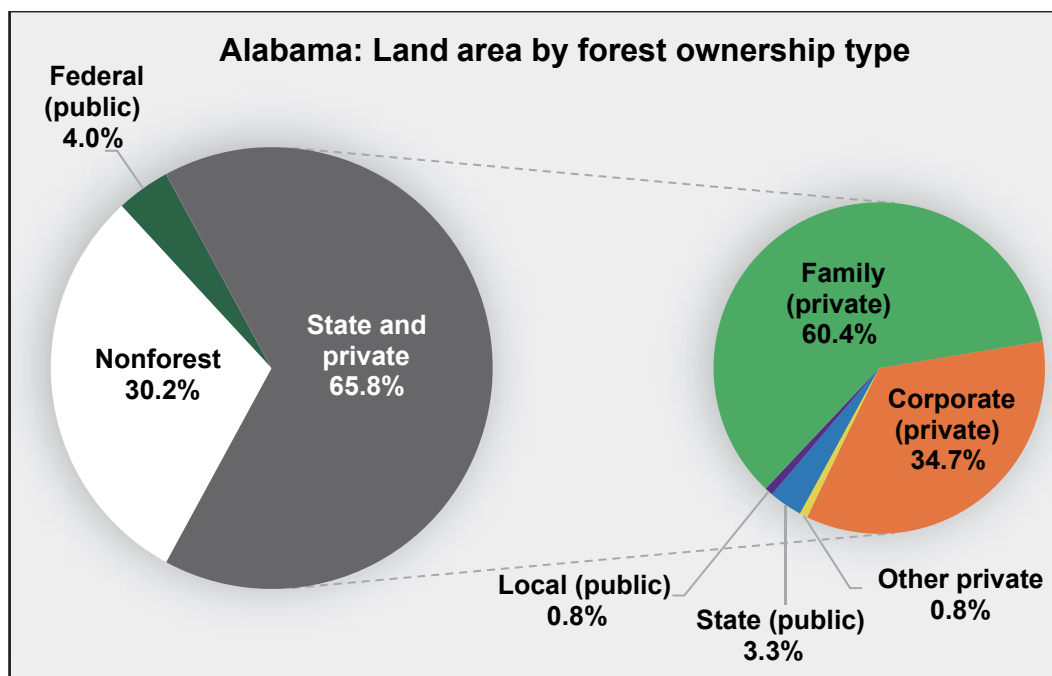


Figure A.AL.2—Land area percentages by forest ownership, ca. 2014. In the smaller circle, percentages represent portion of SPF total for each ownership category. Note: Due to rounding, percentages may not total exactly 100.

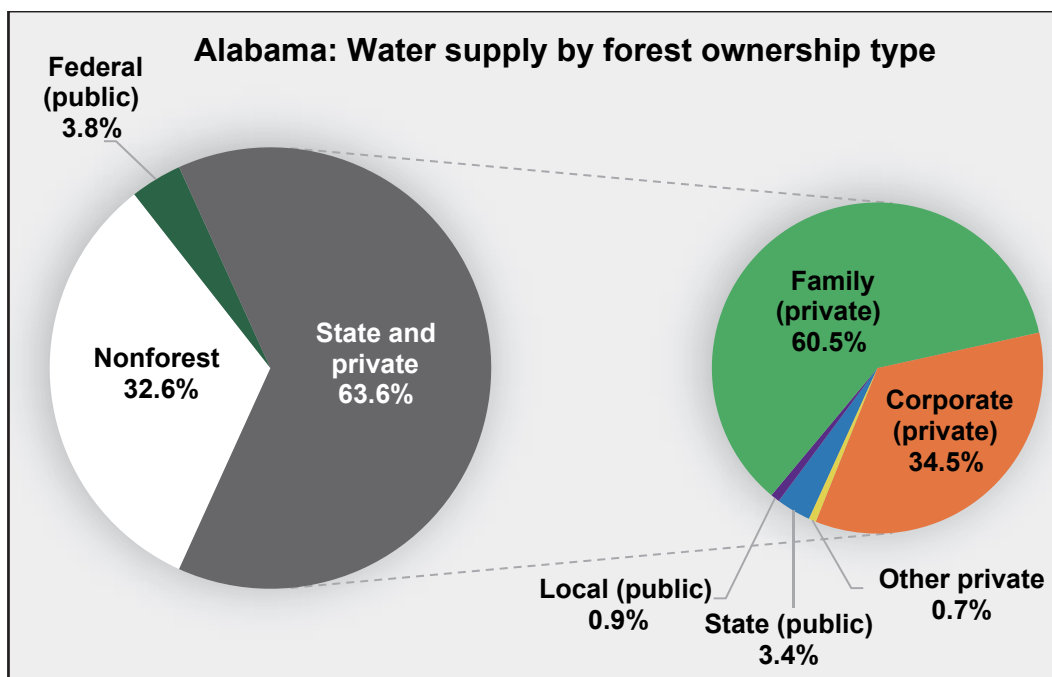


Figure A.AL.3—Percentage of Alabama's water supply deriving from nonforest lands and forest lands of different ownership, ca. 2014. In the smaller circle, percentages represent portion of SPF total for each ownership category. Note: Due to rounding, percentages may not total exactly 100.

Alabama

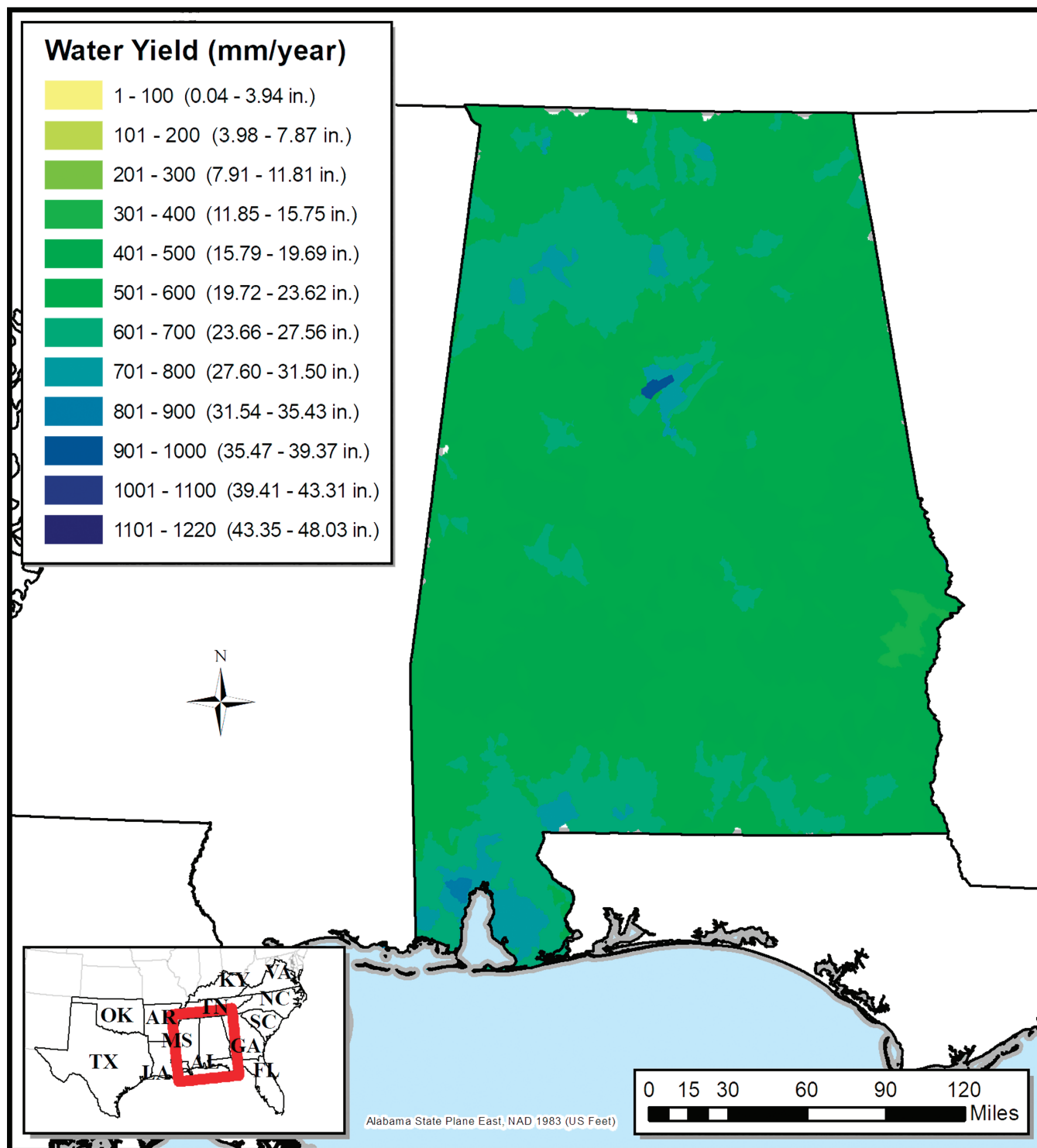
2001-2010 Mean Annual Water Yield by 12-Digit Hydrologic Unit

Figure A.AL.4—Estimated mean annual water yield by 12-digit hydrologic units in Alabama, 2001–2010. Hydrologic Unit Codes (HUC) use number of digits to represent watersheds of different scales. A 12-digit HUC (HUC12) represents a small local watershed. For explanation of water yield and how it is derived, see report.

(A) Streams and Intrastate Public Water System Intakes Receiving Water from Alabama State and Private Forests

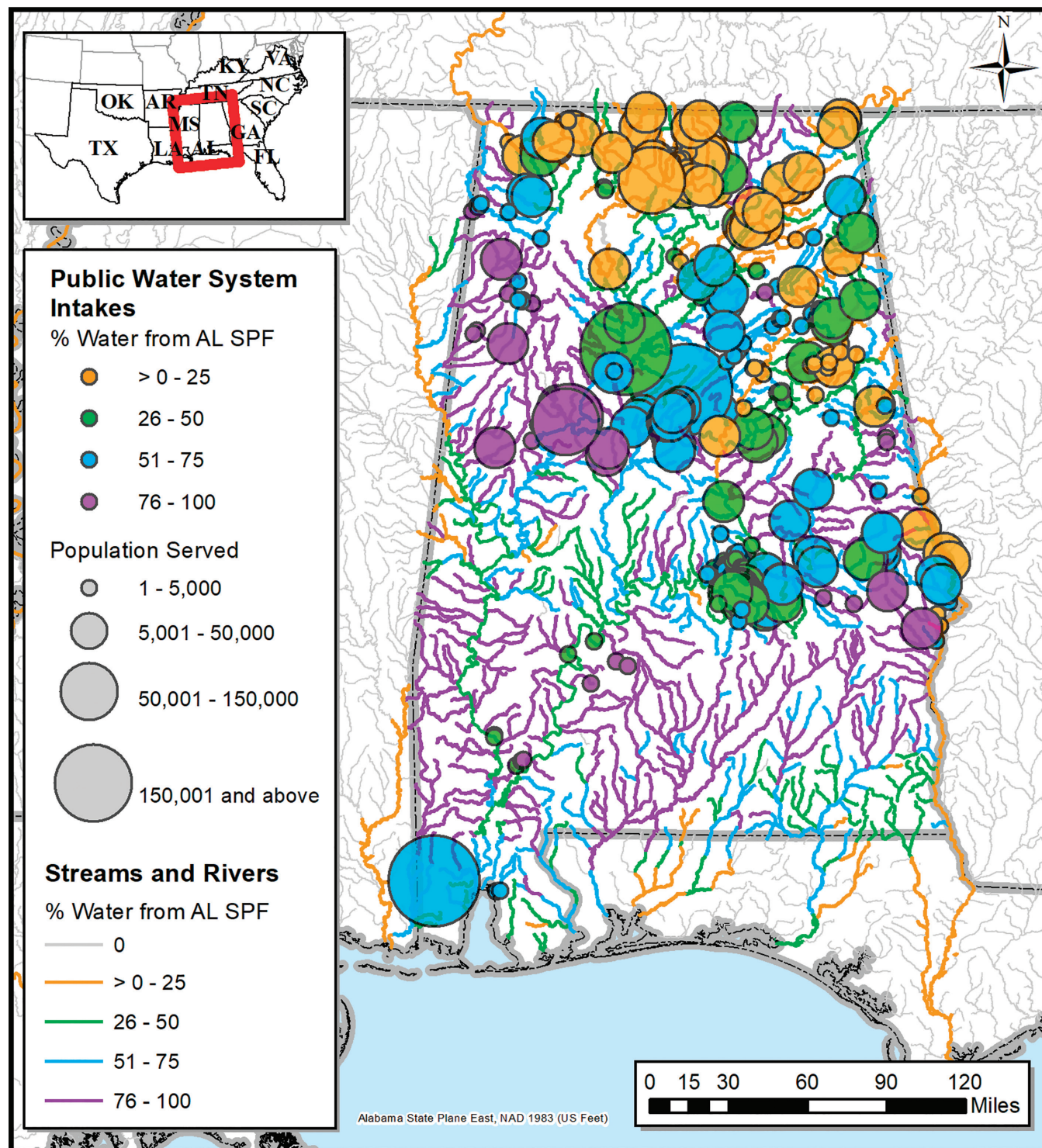


Figure A.AL.5—(A) Alabama streams by percentage of Alabama SPF water content, surface drinking water intakes within Alabama by percentage of Alabama SPF surface water available at intake (symbol color), and population served by each intake (symbol size). A total of 315 surface drinking water intakes within the State serve a population of 3,420,451 in 112 communities. Note: See figures A.AL.5 parts B and C on separate pages for streams and intakes only.

(B) Streams Receiving
Water from Alabama State and Private Forests

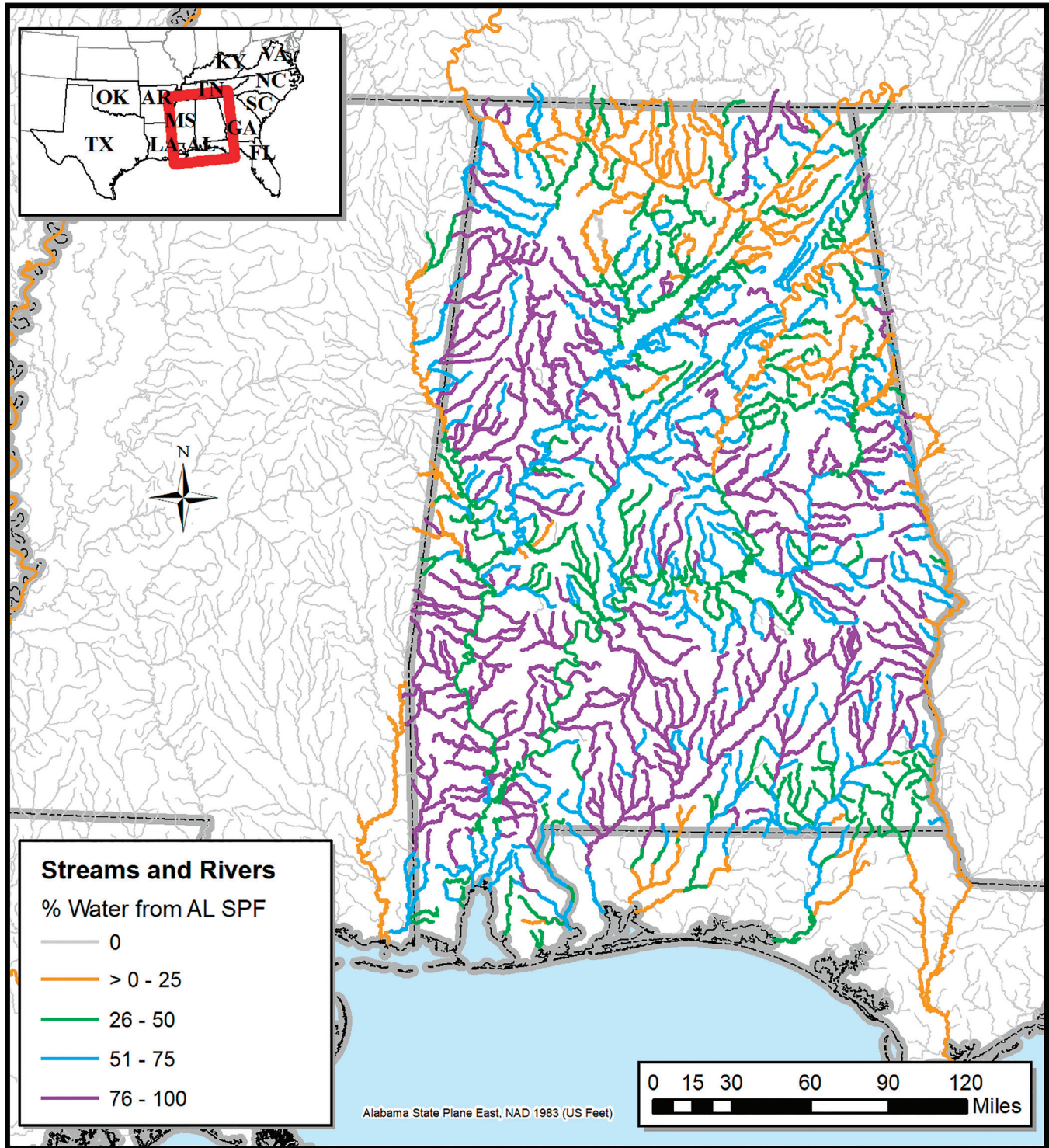


Figure A.AL.5—(B) Alabama streams by percentage of Alabama SPF water content.

(C) Intrastate Public Water System Intakes Receiving Water from Alabama State and Private Forests

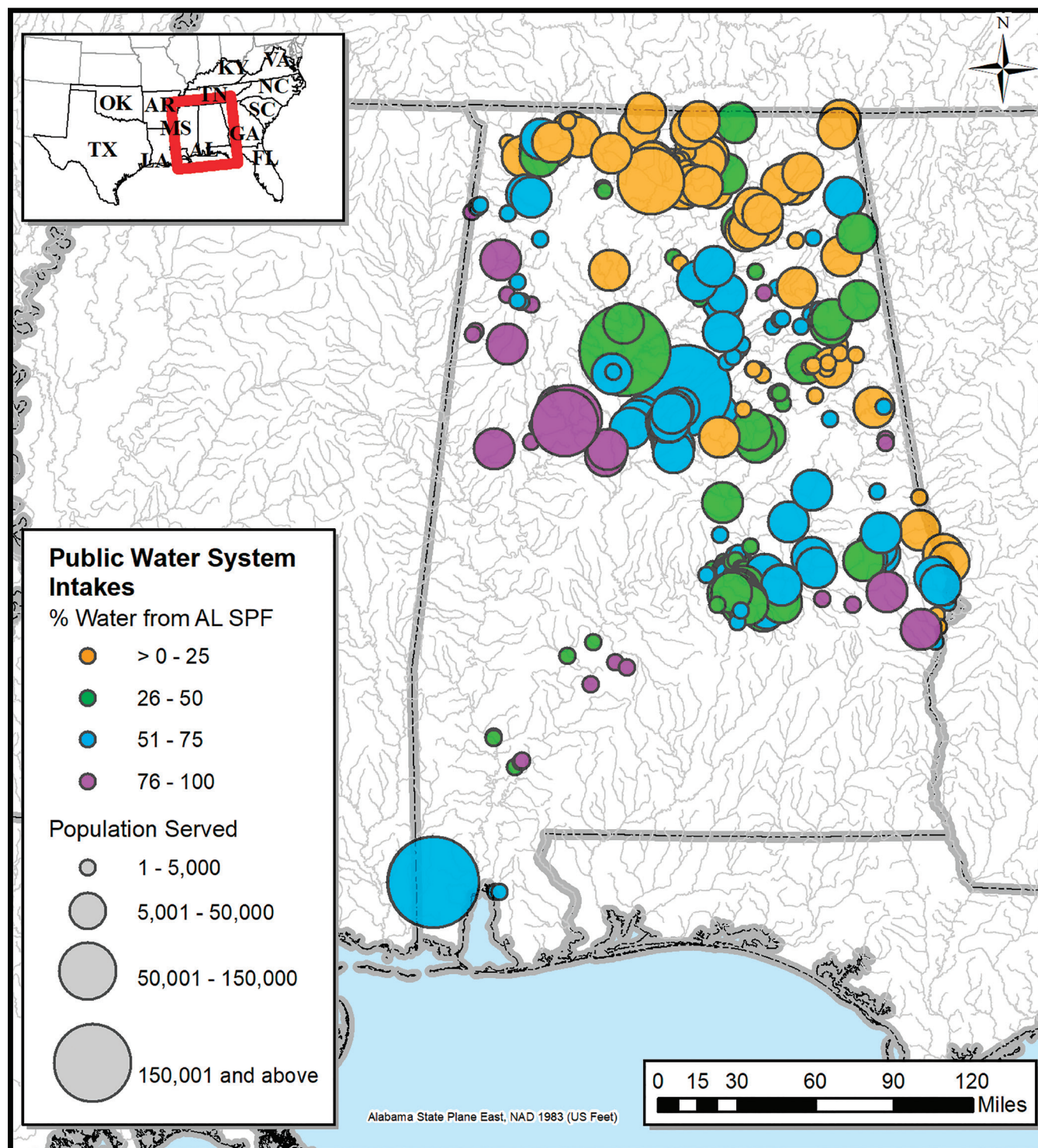


Figure A.AL.5—(C) Surface drinking water intakes within Alabama by percentage of Alabama SPF surface water available at intake (symbol color) and population served by each intake (symbol size). A total of 315 surface drinking water intakes within the State serve a population of 3,420,451 in 112 communities.

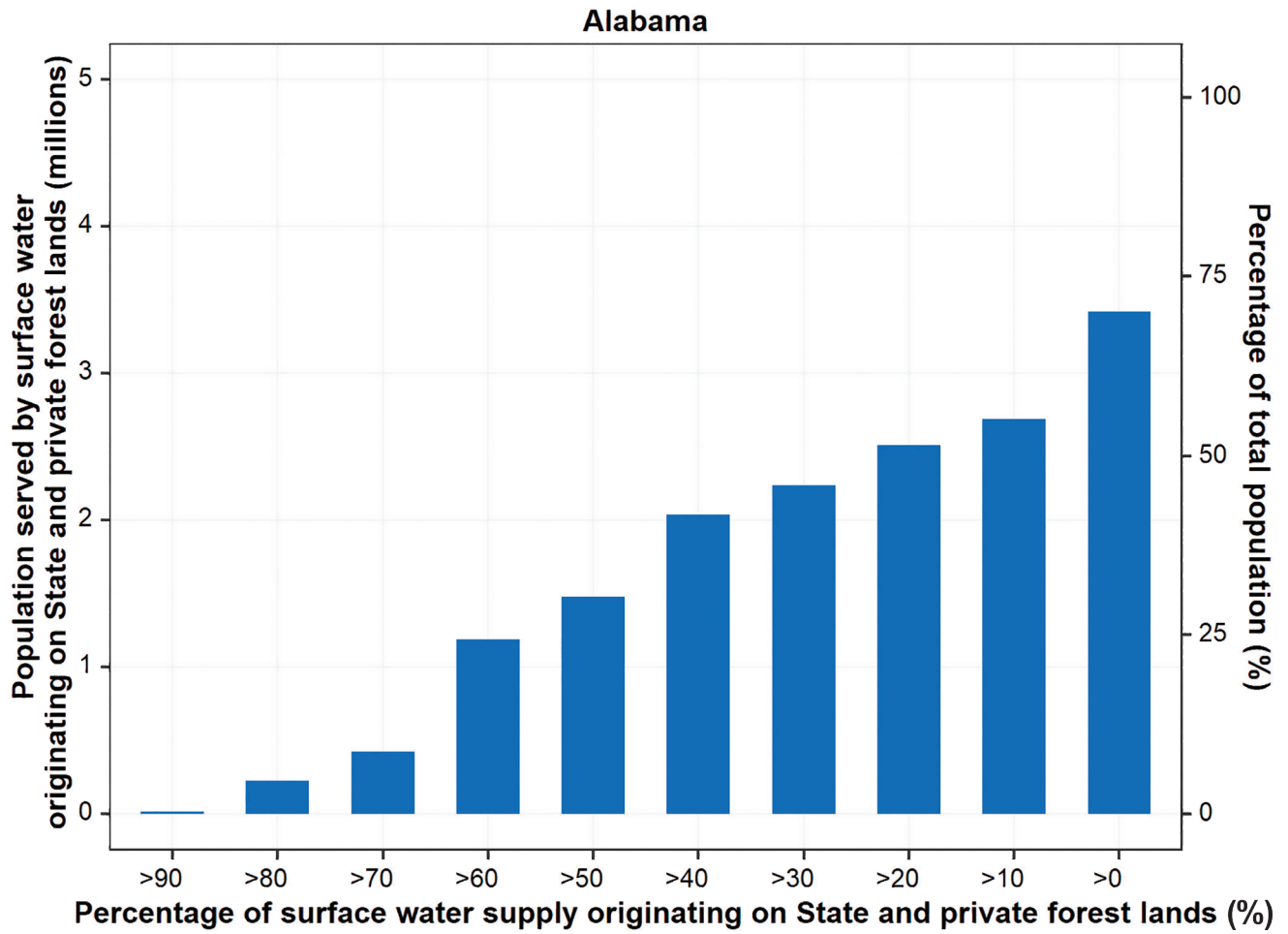


Figure A.AL.6—Cumulative frequency of population served according to percentage of water coming from Alabama SPF lands.

Public Water System Intakes Outside of Alabama Receiving Water from Alabama State and Private Forests

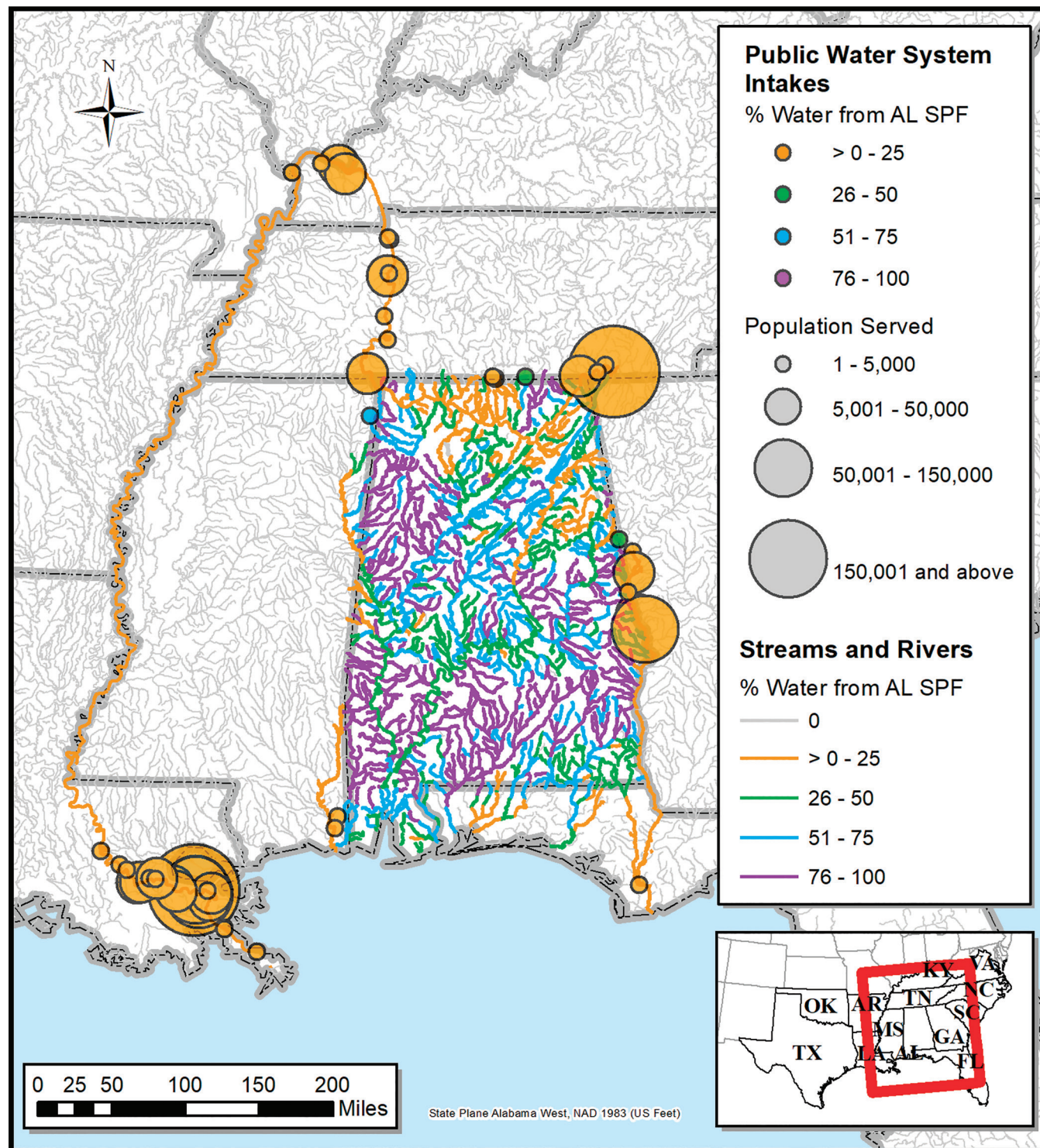


Figure A.AL.7—Alabama streams by percentage of Alabama SPF water content, surface drinking water intakes downstream of Alabama by percentage of Alabama SPF water content (symbol color), and population served by each of these external intakes (symbol size). A total of 77 surface drinking water intakes outside the State but carrying Alabama SPF water serve a population of 1,594,695 in 50 communities.

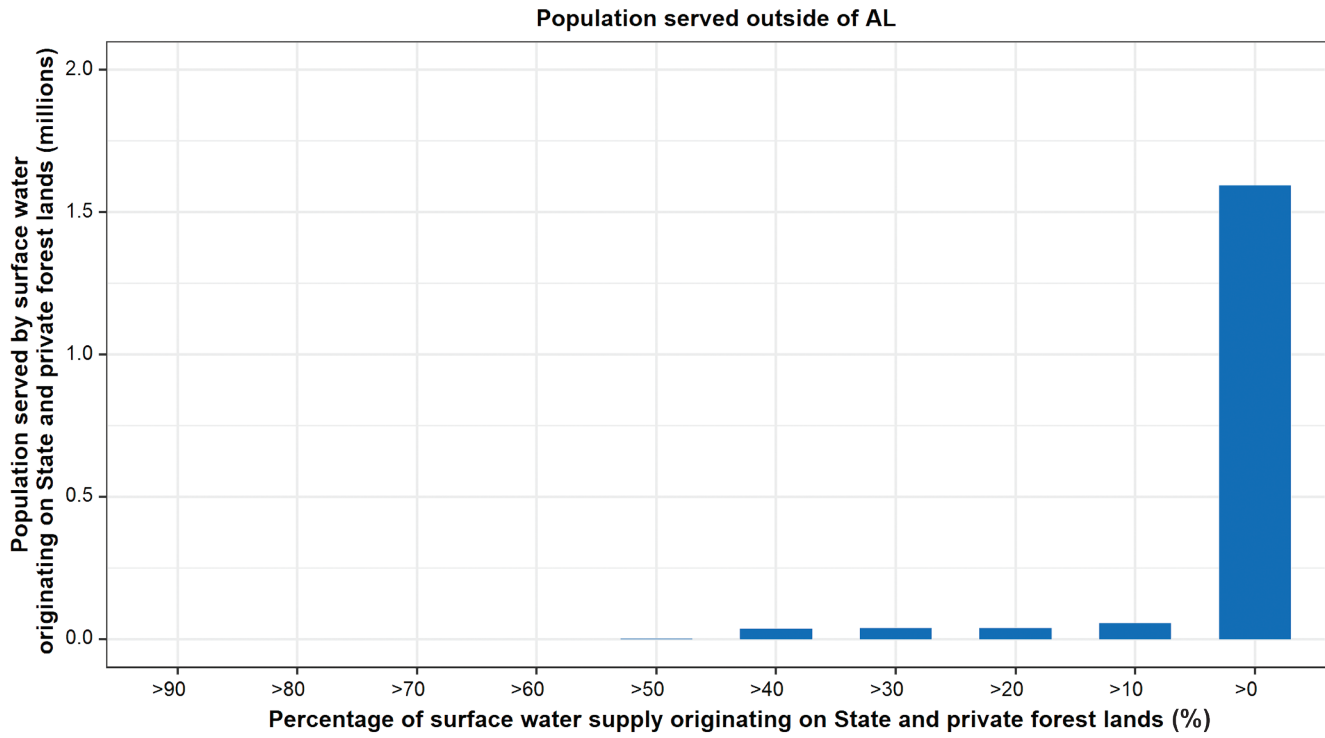


Figure A.AL.8—Cumulative frequency of non-Alabama population served according to percentage of water coming from Alabama SPF lands.

Multi-Intake Public Water Systems (Aggregated to Single Symbol) Receiving Water from Alabama State and Private Forests

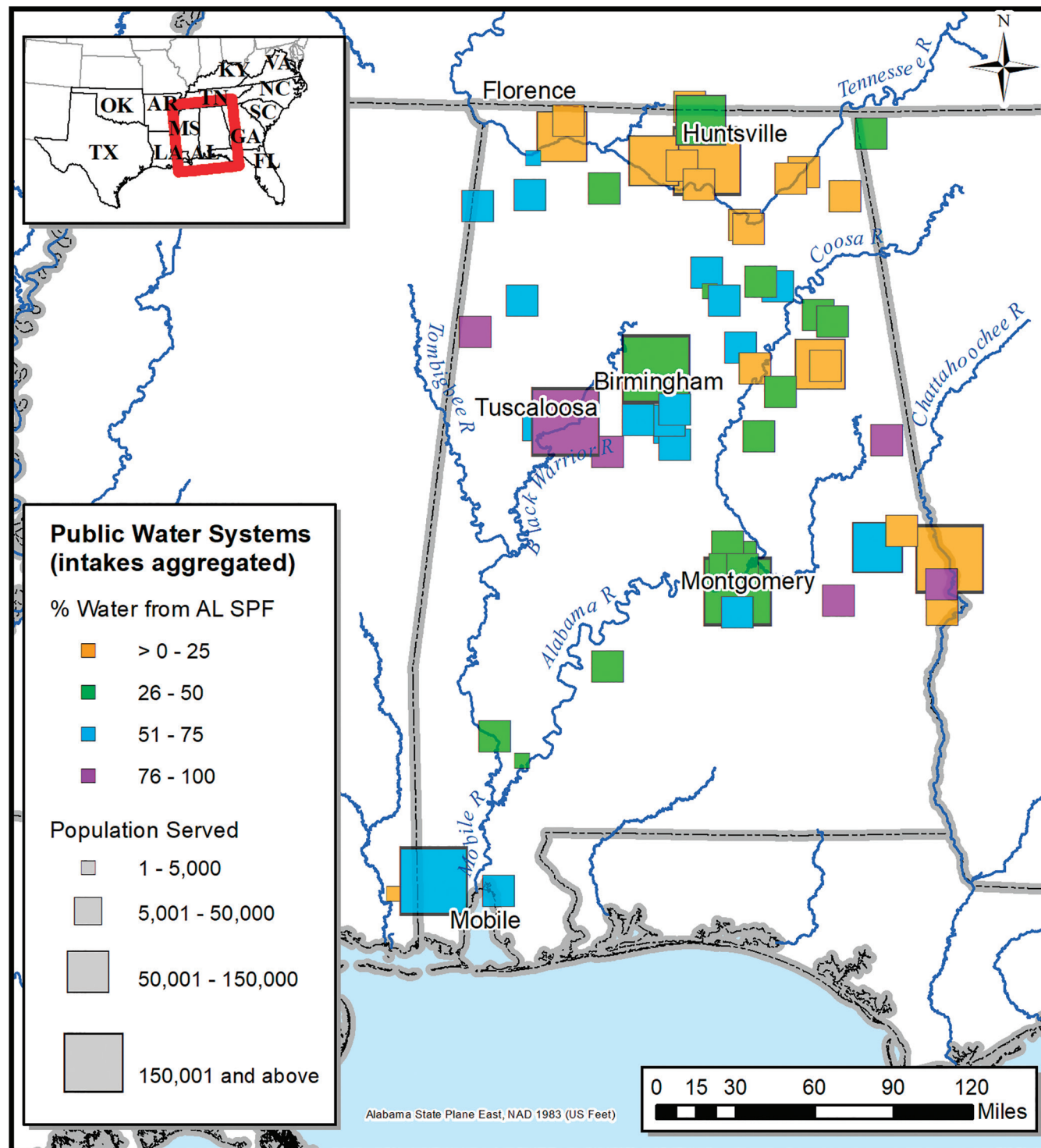


Figure A.AL.9—Multi-intake public water systems aggregated to single data point. Symbol color and size represent values for an entire municipal or corporate water supply system rather than values for individual surface drinking water intakes. Systems with no more than a single surface drinking water intake are not represented on this map.

*Streams and Intrastate Public Water System Intakes in the Birmingham, AL, Area
Receiving Water from Alabama State and Private Forests*

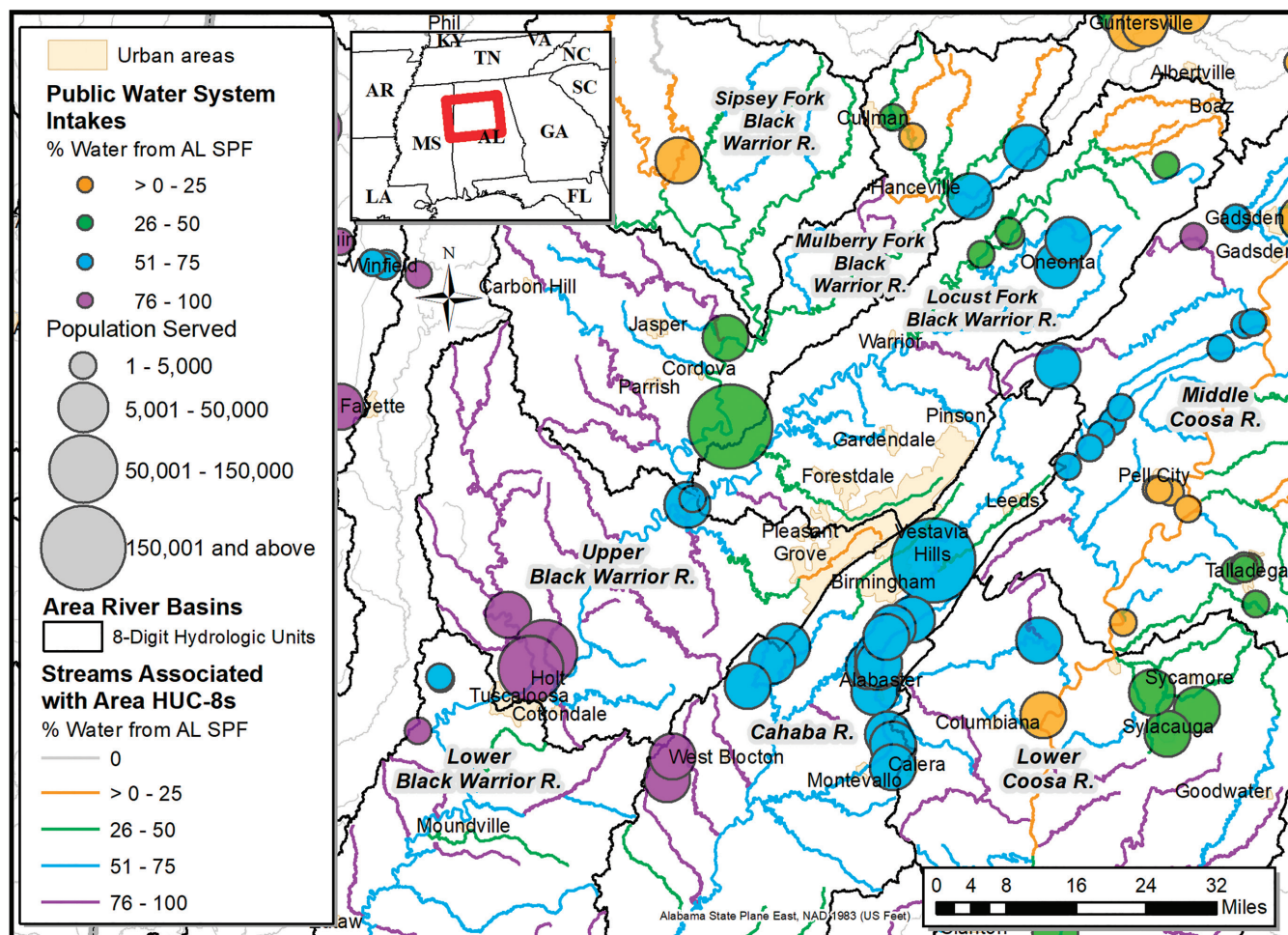


Figure A.AL.10—Local-scale detail showing percentage of water from Alabama SPF for streams and surface drinking water intakes around Birmingham, AL.

Tuscaloosa, AL, Case Study

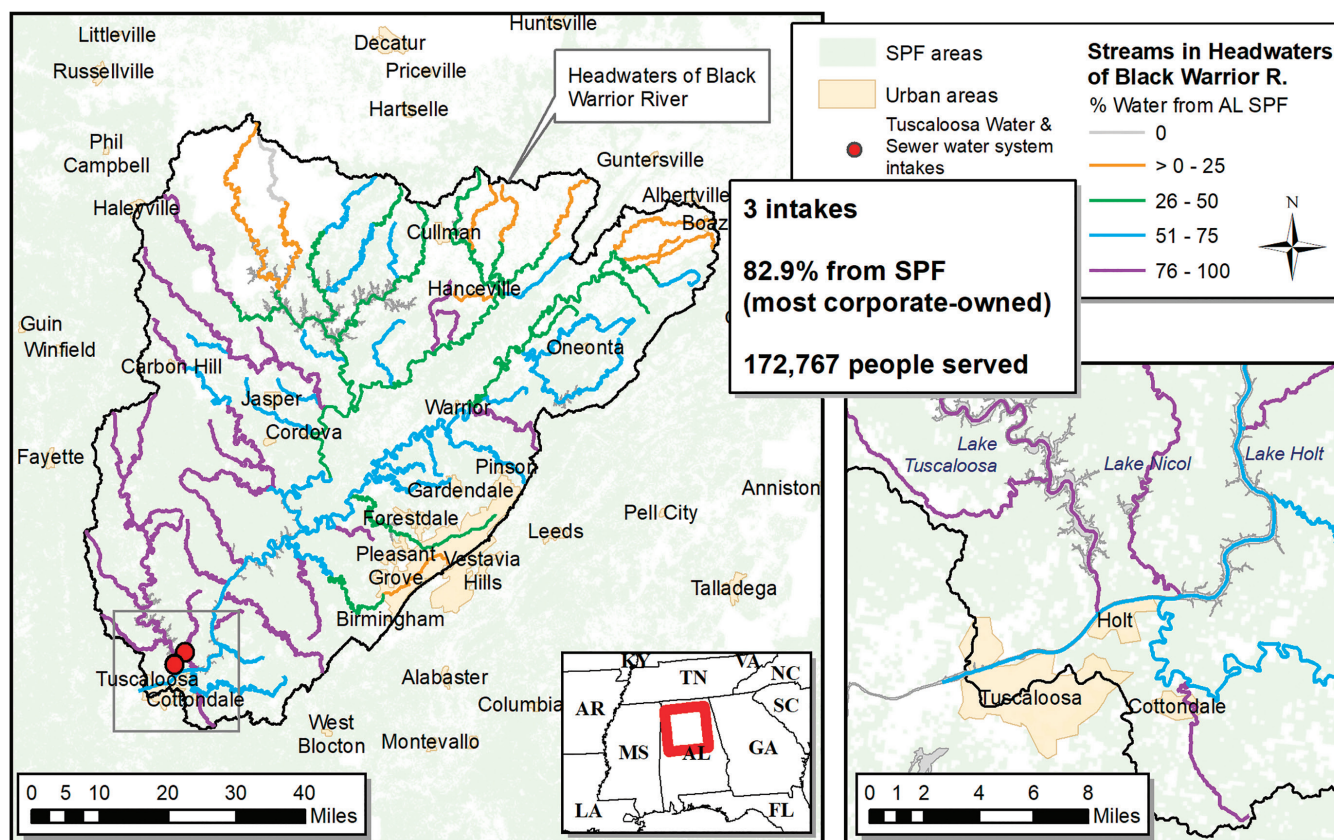


Figure A.AL.11—Case study of the Tuscaloosa Water & Sewer public water supply system, Tuscaloosa, AL, illustrating SPF water in streams supplying the three surface drinking water intakes. When this water reaches the intakes, 82.9 percent of it comes from SPF lands. The largest ownership category in these specific SPF lands is corporate-owned.

[This page intentionally left blank]

Table B.AL.1—Public water system intakes receiving water from State and private forest land in Alabama

Intake ID	Public water system name	Intake number for system	State	Population served by intake	Total volume of surface water available to intake (million m ³ yr ⁻¹)	Total surface water from State and private forest lands (percent)
1	ALABASTER WATER BOARD	1 of 3	AL	13,228	124	52.2
2	ALABASTER WATER BOARD	2 of 3	AL	13,228	124	52.2
3	ALABASTER WATER BOARD	3 of 3	AL	13,228	124	52.2
4	ALBERTVILLE UTILITIES BOARD		AL	29,991	33 666	2.5
5	ALEXANDER CITY WATER DEPARTMENT		AL	27,000	3307	52.5
6	ANNISTON WATER & SEWER BOARD	1 of 2	AL	28,350	32	26.8
7	ANNISTON WATER & SEWER BOARD	2 of 2	AL	28,350	26	13.7
8	ARAB WATER WORKS BOARD	1 of 2	AL	17,400	80	35.6
9	ARAB WATER WORKS BOARD	2 of 2	AL	17,400	33 925	2.8
10	ARLEY WATER WORKS		AL	7,872	582	15.4
11	ATHENS UTILITIES		AL	27,534	3099	4.1
12	ATTALLA WATER WORKS BOARD	1 of 4	AL	2,104	474	62.3
13	ATTALLA WATER WORKS BOARD	2 of 4	AL	2,104	474	62.3
14	ATTALLA WATER WORKS BOARD	3 of 4	AL	2,104	474	62.3
15	ATTALLA WATER WORKS BOARD	4 of 4	AL	2,104	474	62.3
16	AUBURN WATER WORKS	1 of 4	AL	16,800	127	69.2
17	AUBURN WATER WORKS	2 of 4	AL	16,800	127	69.2
18	AUBURN WATER WORKS	3 of 4	AL	16,800	127	69.2
19	AUBURN WATER WORKS	4 of 4	AL	16,800	127	69.2
20	BIRMINGHAM WATER WORKS BOARD	1 of 2	AL	292,500	300	62.1
21	BIRMINGHAM WATER WORKS BOARD	2 of 2	AL	292,500	3219	48.4
22	BLOUNT COUNTY WATER	1 of 2	AL	8,700	35	52.1
23	BLOUNT COUNTY WATER	2 of 2	AL	8,700	35	52.1
24	BRIDGEPORT UTILITIES BOARD		AL	6,000	31 408	0.4
25	CALERA WATER WORKS	1 of 4	AL	5,940	121	55.3
26	CALERA WATER WORKS	2 of 4	AL	5,940	121	55.3
27	CALERA WATER WORKS	3 of 4	AL	5,940	121	55.3
28	CALERA WATER WORKS	4 of 4	AL	5,940	121	55.3
29	CALHOUN COUNTY WATER & FIRE PR AUTHORITY	1 of 7	AL	4,402	56	68.5
30	CALHOUN COUNTY WATER & FIRE PR AUTHORITY	2 of 7	AL	4,402	56	68.5
31	CALHOUN COUNTY WATER & FIRE PR AUTHORITY	3 of 7	AL	4,402	56	68.5
32	CALHOUN COUNTY WATER & FIRE PR AUTHORITY	4 of 7	AL	4,402	272	52.1
33	CALHOUN COUNTY WATER & FIRE PR AUTHORITY	5 of 7	AL	4,402	136	45.2
34	CALHOUN COUNTY WATER & FIRE PR AUTHORITY	6 of 7	AL	4,402	83	40
35	CALHOUN COUNTY WATER & FIRE PR AUTHORITY	7 of 7	AL	4,402	195	19.6
36	CENTRAL ELMORE WATER AUTHORITY		AL	32,877	128	73.4
37	CENTRE WATER & SEWER BOARD		AL	6,108	7018	5.1
38	CHATTAHOOCHEE VALLEY WATER SUPPLY DIST		AL	32	5995	4.7
39	CHEROKEE WATER & GAS DEPARTMENT		AL	2,250	44 213	7.1
40	CITIZENS WATER SERVICE, INC.	1 of 2	AL	5,475	106	86.6
41	CITIZENS WATER SERVICE, INC.	2 of 2	AL	5,475	58	83.7
42	CLANTON WATER DEPARTMENT		AL	13,500	12 878	28.3
43	CLAY COUNTY WATER AUTHORITY		AL	1,719	84	70.6
44	CLEVELAND WATER WORKS	1 of 2	AL	1,692	28	40.5
45	CLEVELAND WATER WORKS	2 of 2	AL	1,692	28	40.5
46	COKER WATER AUTHORITY	1 of 3	AL	2,790	54	84.7

(continued)

Table B.AL.1 (continued)—Public water system intakes receiving water from State and private forest land in Alabama

Intake ID	Public water system name	Intake number for system	State	Population served by intake	Total volume of surface water available to intake (million m ³ yr ⁻¹)	Total surface water from State and private forest lands (percent)
47	COKER WATER AUTHORITY	2 of 3	AL	2,790	7397	59.2
48	COKER WATER AUTHORITY	3 of 3	AL	2,790	7397	59.2
49	COLBERT COUNTY RURAL WATER SYSTEM		AL	10,731	44 111	7
50	CROSSVILLE WATER BOARD		AL	1,998	48	17.3
51	CULLMAN UTILITIES BOARD		AL	32	73	31.9
52	DECATUR (MUNICIPAL UTILITIES BOARD OF)		AL	77,100	37 685	5.8
53	DEKALB-JACKSON WATER SUPPLY DISTRICT		AL	15,390	31 628	0.7
54	ELMORE WATER & SEWER AUTHORITY	1 of 7	AL	1,813	108	56.9
55	ELMORE WATER & SEWER AUTHORITY	2 of 7	AL	1,813	108	56.9
56	ELMORE WATER & SEWER AUTHORITY	3 of 7	AL	1,813	108	56.9
57	ELMORE WATER & SEWER AUTHORITY	4 of 7	AL	1,813	19 752	39.1
58	ELMORE WATER & SEWER AUTHORITY	5 of 7	AL	1,813	19 720	39.1
59	ELMORE WATER & SEWER AUTHORITY	6 of 7	AL	1,813	19 720	39.1
60	ELMORE WATER & SEWER AUTHORITY	7 of 7	AL	1,813	19 720	39.1
61	FAYETTE WATER WORKS BOARD		AL	8,142	310	75.9
62	FIVE STAR WATER SUPPLY DISTRICT		AL	100	45	27.5
63	FLORENCE WATER-WASTEWATER DEPARTMENT	1 of 4	AL	16,725	317	51.6
64	FLORENCE WATER-WASTEWATER DEPARTMENT	2 of 4	AL	16,725	210	14.5
65	FLORENCE WATER-WASTEWATER DEPARTMENT	3 of 4	AL	16,725	43 221	6.4
66	FLORENCE WATER-WASTEWATER DEPARTMENT	4 of 4	AL	16,725	43 221	6.4
67	FORT PAYNE WATER WORKS BOARD	1 of 3	AL	7,572	80	60.9
68	FORT PAYNE WATER WORKS BOARD	2 of 3	AL	7,572	80	60.9
69	FORT PAYNE WATER WORKS BOARD	3 of 3	AL	7,572	32 714	2
70	FOSTERS-RALPH WATER AUTHORITY		AL	5,985	1069	86.9
71	FRANKLIN COUNTY WATER SERVICES AUTHORITY		AL	4,950	91	74.7
72	FT MITCHELL WATER SYSTEM	1 of 6	AL	2,200	28	73.3
73	FT MITCHELL WATER SYSTEM	2 of 6	AL	2,200	39	72.5
74	FT MITCHELL WATER SYSTEM	3 of 6	AL	2,200	381	70.1
75	FT MITCHELL WATER SYSTEM	4 of 6	AL	2,200	381	70.1
76	FT MITCHELL WATER SYSTEM	5 of 6	AL	2,200	8430	12.8
77	FT MITCHELL WATER SYSTEM	6 of 6	AL	2,200	8111	11.6
78	GADSDEN WATER WORKS AND SEWER BOARD		AL	44,637	8160	11.5
79	GLEN ALLEN WATER SYSTEM		AL	1,500	29	88.4
80	GOLDEN ROD BROILERS		AL	350	40	21.5
81	GOVERNMENTAL UTILITY SERVICE CORPORATION		AL	32	6115	54.9
82	GREENHILL WATER & FIRE PRO AUTHORITY	1 of 2	AL	3,897	43 221	6.4
83	GREENHILL WATER & FIRE PRO AUTHORITY	2 of 2	AL	3,897	43 221	6.4
84	GUIN WATER & SEWER BOARD		AL	4,416	75	86.3
85	GUNTERSVILLE WATER WORKS & SEWER BOARD	1 of 2	AL	6,306	33 925	2.8
86	GUNTERSVILLE WATER WORKS & SEWER BOARD	2 of 2	AL	6,306	33 925	2.8
87	HAMILTON WATER WORKS & SEWER BOARD		AL	10,500	347	80.2
88	HARVEST-MONROVIA WATER SYSTEM	1 of 8	AL	4,014	63	20.4
89	HARVEST-MONROVIA WATER SYSTEM	2 of 8	AL	4,014	63	20.4
90	HARVEST-MONROVIA WATER SYSTEM	3 of 8	AL	4,014	63	20.4
91	HARVEST-MONROVIA WATER SYSTEM	4 of 8	AL	4,014	63	20.4

(continued)

Table B.AL.1 (continued)—Public water system intakes receiving water from State and private forest land in Alabama

Intake ID	Public water system name	Intake number for system	State	Population served by intake	Total volume of surface water available to intake	Total surface water from State and private forest lands
					(million m ³ yr ⁻¹)	(percent)
92	HARVEST-MONROVIA WATER SYSTEM	5 of 8	AL	4,014	63	20.4
93	HARVEST-MONROVIA WATER SYSTEM	6 of 8	AL	4,014	63	20.4
94	HARVEST-MONROVIA WATER SYSTEM	7 of 8	AL	4,014	181	19.3
95	HARVEST-MONROVIA WATER SYSTEM	8 of 8	AL	4,014	181	19.3
96	HAWK PRIDE MT WATER SYSTEM	1 of 2	AL	2,018	102	56.8
97	HAWK PRIDE MT WATER SYSTEM	2 of 2	AL	2,018	102	56.8
98	HEFLIN WATER WORKS		AL	3,621	34	17.6
99	HELENA UTILITY BOARD	1 of 3	AL	6,300	124	52.2
100	HELENA UTILITY BOARD	2 of 3	AL	6,300	124	52.2
101	HELENA UTILITY BOARD	3 of 3	AL	6,300	124	52.2
102	HUNTSVILLE UTILITIES	1 of 7	AL	31,310	729	26.9
103	HUNTSVILLE UTILITIES	2 of 7	AL	31,310	67	23.1
104	HUNTSVILLE UTILITIES	3 of 7	AL	31,310	67	23.1
105	HUNTSVILLE UTILITIES	4 of 7	AL	31,310	158	9.9
106	HUNTSVILLE UTILITIES	5 of 7	AL	31,310	36 810	5.4
107	HUNTSVILLE UTILITIES	6 of 7	AL	31,310	35 642	4.9
108	HUNTSVILLE UTILITIES	7 of 7	AL	31,310	69	2.9
109	JACKSON WATER WORKS & SEWER BOARD	1 of 2	AL	4,142	28 589	48
110	JACKSON WATER WORKS & SEWER BOARD	2 of 2	AL	4,142	28 589	48
111	JACKSONVILLE UTILITIES	1 of 2	AL	6,942	83	40
112	JACKSONVILLE UTILITIES	2 of 2	AL	6,942	83	40
113	JASPER WATER WORKS AND SEWER BOARD		AL	28,638	3150	47.8
114	JCG FOODS OF ALABAMA LLC		AL	860	181	62.4
115	LAFAYETTE WATER WORKS		AL	4,380	25	68.6
116	LIMESTONE COUNTY WATER SYSTEM	1 of 4	AL	14,625	91	22
117	LIMESTONE COUNTY WATER SYSTEM	2 of 4	AL	14,625	37 877	5.9
118	LIMESTONE COUNTY WATER SYSTEM	3 of 4	AL	14,625	56	2.9
119	LIMESTONE COUNTY WATER SYSTEM	4 of 4	AL	14,625	2782	2
120	LOACHAPOKA WATER AUTHORITY		AL	10,500	75	41.3
121	MACON COUNTY WATER AUTHORITY	1 of 2	AL	3,783	73	91.8
122	MACON COUNTY WATER AUTHORITY	2 of 2	AL	3,783	110	84.4
123	MADISON COUNTY WATER DEPARTMENT	1 of 3	AL	28,649	115	37.8
124	MADISON COUNTY WATER DEPARTMENT	2 of 3	AL	28,649	66	21.4
125	MADISON COUNTY WATER DEPARTMENT	3 of 3	AL	28,649	57	17.6
126	MADISON WATER WORKS & SEWER	1 of 12	AL	3,255	63	20.4
127	MADISON WATER WORKS & SEWER	2 of 12	AL	3,255	36 810	5.4
128	MADISON WATER WORKS & SEWER	3 of 12	AL	3,255	36 810	5.4
129	MADISON WATER WORKS & SEWER	4 of 12	AL	3,255	36 810	5.4
130	MADISON WATER WORKS & SEWER	5 of 12	AL	3,255	69	2.9
131	MADISON WATER WORKS & SEWER	6 of 12	AL	3,255	69	2.9
132	MADISON WATER WORKS & SEWER	7 of 12	AL	3,255	69	2.9
133	MADISON WATER WORKS & SEWER	8 of 12	AL	3,255	69	2.9
134	MADISON WATER WORKS & SEWER	9 of 12	AL	3,255	69	2.9
135	MADISON WATER WORKS & SEWER	10 of 12	AL	3,255	69	2.9
136	MADISON WATER WORKS & SEWER	11 of 12	AL	3,255	56	2.9

(continued)

Table B.AL.1 (continued)—Public water system intakes receiving water from State and private forest land in Alabama

Intake ID	Public water system name	Intake number for system	State	Population served by intake	Total volume of surface water available to intake	Total surface water from State and private forest lands
					(million m ³ yr ⁻¹)	(percent)
137	MADISON WATER WORKS & SEWER	12 of 12	AL	3,255	56	2.9
138	MARBURY WATER SYSTEM, INC.	1 of 2	AL	3,660	45	72
139	MARBURY WATER SYSTEM, INC.	2 of 2	AL	3,660	19 752	39.1
140	MILLBROOK UTILITIES		AL	4,503	19 752	39.1
141	MOBILE BOARD OF WATER AND SEWER COMM.	1 of 2	AL	152,925	181	66.5
142	MOBILE BOARD OF WATER AND SEWER COMM.	2 of 2	AL	152,925	181	66.5
143	MONTGOMERY WATER WORKS	1 of 44	AL	5,474	56	84.2
144	MONTGOMERY WATER WORKS	2 of 44	AL	5,474	189	64.7
145	MONTGOMERY WATER WORKS	3 of 44	AL	5,474	6024	59.6
146	MONTGOMERY WATER WORKS	4 of 44	AL	5,474	6024	59.6
147	MONTGOMERY WATER WORKS	5 of 44	AL	5,474	6085	59.5
148	MONTGOMERY WATER WORKS	6 of 44	AL	5,474	383	49.8
149	MONTGOMERY WATER WORKS	7 of 44	AL	5,474	383	49.8
150	MONTGOMERY WATER WORKS	8 of 44	AL	5,474	447	44.6
151	MONTGOMERY WATER WORKS	9 of 44	AL	5,474	447	44.6
152	MONTGOMERY WATER WORKS	10 of 44	AL	5,474	447	44.6
153	MONTGOMERY WATER WORKS	11 of 44	AL	5,474	447	44.6
154	MONTGOMERY WATER WORKS	12 of 44	AL	5,474	447	44.6
155	MONTGOMERY WATER WORKS	13 of 44	AL	5,474	447	44.6
156	MONTGOMERY WATER WORKS	14 of 44	AL	5,474	447	44.6
157	MONTGOMERY WATER WORKS	15 of 44	AL	5,474	447	44.6
158	MONTGOMERY WATER WORKS	16 of 44	AL	5,474	69	44.6
159	MONTGOMERY WATER WORKS	17 of 44	AL	5,474	490	43.3
160	MONTGOMERY WATER WORKS	18 of 44	AL	5,474	490	43.3
161	MONTGOMERY WATER WORKS	19 of 44	AL	5,474	490	43.3
162	MONTGOMERY WATER WORKS	20 of 44	AL	5,474	490	43.3
163	MONTGOMERY WATER WORKS	21 of 44	AL	5,474	490	43.3
164	MONTGOMERY WATER WORKS	22 of 44	AL	5,474	490	43.3
165	MONTGOMERY WATER WORKS	23 of 44	AL	5,474	490	43.3
166	MONTGOMERY WATER WORKS	24 of 44	AL	5,474	490	43.3
167	MONTGOMERY WATER WORKS	25 of 44	AL	5,474	490	43.3
168	MONTGOMERY WATER WORKS	26 of 44	AL	5,474	490	43.3
169	MONTGOMERY WATER WORKS	27 of 44	AL	5,474	490	43.3
170	MONTGOMERY WATER WORKS	28 of 44	AL	5,474	490	43.3
171	MONTGOMERY WATER WORKS	29 of 44	AL	5,474	490	43.3
172	MONTGOMERY WATER WORKS	30 of 44	AL	5,474	490	43.3
173	MONTGOMERY WATER WORKS	31 of 44	AL	5,474	490	43.3
174	MONTGOMERY WATER WORKS	32 of 44	AL	5,474	490	43.3
175	MONTGOMERY WATER WORKS	33 of 44	AL	5,474	490	43.3
176	MONTGOMERY WATER WORKS	34 of 44	AL	5,474	490	43.3
177	MONTGOMERY WATER WORKS	35 of 44	AL	5,474	490	43.3
178	MONTGOMERY WATER WORKS	36 of 44	AL	5,474	19 720	39.1
179	MONTGOMERY WATER WORKS	37 of 44	AL	5,474	19 808	39.1
180	MONTGOMERY WATER WORKS	38 of 44	AL	5,474	19 808	39.1
181	MONTGOMERY WATER WORKS	39 of 44	AL	5,474	19 808	39.1

(continued)

Table B.AL.1 (continued)—Public water system intakes receiving water from State and private forest land in Alabama

Intake ID	Public water system name	Intake number for system	State	Population served by intake	Total volume of surface water available to intake	Total surface water from State and private forest lands
					(million m ³ yr ⁻¹)	(percent)
182	MONTGOMERY WATER WORKS	40 of 44	AL	5,474	19 808	39.1
183	MONTGOMERY WATER WORKS	41 of 44	AL	5,474	19 808	39.1
184	MONTGOMERY WATER WORKS	42 of 44	AL	5,474	19 808	39.1
185	MONTGOMERY WATER WORKS	43 of 44	AL	5,474	19 808	39.1
186	MONTGOMERY WATER WORKS	44 of 44	AL	5,474	30	30.8
187	MOULTON WATER WORKS BOARD	1 of 2	AL	3,720	62	30.4
188	MOULTON WATER WORKS BOARD	2 of 2	AL	3,720	62	30.4
189	MUSCLE SHOALS UTILITY BOARD		AL	18,303	43 221	6.4
190	NECTAR WATER SYSTEM		AL	2,985	778	44.6
191	NORTH MARSHALL UTILITIES		AL	12,369	33 925	2.8
192	NORTHEAST ALABAMA WATER SYSTEM	1 of 4	AL	10,653	389	44.6
193	NORTHEAST ALABAMA WATER SYSTEM	2 of 4	AL	10,653	33 666	2.5
194	NORTHEAST ALABAMA WATER SYSTEM	3 of 4	AL	10,653	32 714	2
195	NORTHEAST ALABAMA WATER SYSTEM	4 of 4	AL	10,653	32 714	2
196	NORTHPORT WATER WORKS		AL	40,551	603	83.1
197	ODENVILLE (UTIL BOARD OF THE TOWN OF)	1 of 8	AL	2,706	38	72.2
198	ODENVILLE (UTIL BOARD OF THE TOWN OF)	2 of 8	AL	2,706	38	72.2
199	ODENVILLE (UTIL BOARD OF THE TOWN OF)	3 of 8	AL	2,706	38	72.2
200	ODENVILLE (UTIL BOARD OF THE TOWN OF)	4 of 8	AL	2,706	38	72.2
201	ODENVILLE (UTIL BOARD OF THE TOWN OF)	5 of 8	AL	2,706	71	68
202	ODENVILLE (UTIL BOARD OF THE TOWN OF)	6 of 8	AL	2,706	71	68
203	ODENVILLE (UTIL BOARD OF THE TOWN OF)	7 of 8	AL	2,706	49	60.8
204	ODENVILLE (UTIL BOARD OF THE TOWN OF)	8 of 8	AL	2,706	49	60.8
205	OLD LINE WATER SYSTEM	1 of 3	AL	1,256	53	93.7
206	OLD LINE WATER SYSTEM	2 of 3	AL	1,256	53	93.7
207	OLD LINE WATER SYSTEM	3 of 3	AL	1,256	29 901	48.9
208	ONEONTA UTILITIES BOARD	1 of 3	AL	6,579	189	71.8
209	ONEONTA UTILITIES BOARD	2 of 3	AL	6,579	122	56.1
210	ONEONTA UTILITIES BOARD	3 of 3	AL	6,579	68	51.5
211	OPELIKA UTILITIES	1 of 2	AL	19,472	103	74.8
212	OPELIKA UTILITIES	2 of 2	AL	19,472	6374	8
213	OXFORD WATER WORKS & SEWER BOARD	1 of 6	AL	4,524	357	21.6
214	OXFORD WATER WORKS & SEWER BOARD	2 of 6	AL	4,524	357	21.6
215	OXFORD WATER WORKS & SEWER BOARD	3 of 6	AL	4,524	357	21.6
216	OXFORD WATER WORKS & SEWER BOARD	4 of 6	AL	4,524	357	21.6
217	OXFORD WATER WORKS & SEWER BOARD	5 of 6	AL	4,524	195	19.6
218	OXFORD WATER WORKS & SEWER BOARD	6 of 6	AL	4,524	75	13.7
219	PELHAM WATER WORKS	1 of 5	AL	6,764	44	55.9
220	PELHAM WATER WORKS	2 of 5	AL	6,764	44	55.9
221	PELHAM WATER WORKS	3 of 5	AL	6,764	44	55.9
222	PELHAM WATER WORKS	4 of 5	AL	6,764	44	55.9
223	PELHAM WATER WORKS	5 of 5	AL	6,764	124	52.2
224	PELL CITY WATER WORKS	1 of 4	AL	3,773	10 132	17.8
225	PELL CITY WATER WORKS	2 of 4	AL	3,773	10 132	17.8
226	PELL CITY WATER WORKS	3 of 4	AL	3,773	10 132	17.8

(continued)

Table B.AL.1 (continued)—Public water system intakes receiving water from State and private forest land in Alabama

Intake ID	Public water system name	Intake number for system	State	Population served by intake	Total volume of surface water available to intake (million m ³ yr ⁻¹)	Total surface water from State and private forest lands (percent)
227	PELL CITY WATER WORKS	4 of 4	AL	3,773	9992	17.3
228	PHENIX CITY UTILITIES		AL	35,358	6839	8.7
229	PIEDMONT UTILITIES BOARD		AL	8,184	181	33.2
230	PINE HILL WATER DEPARTMENT		AL	2,370	28 250	46.7
231	PINTLALA WATER SYSTEM, INC.	1 of 3	AL	1,751	232	56.7
232	PINTLALA WATER SYSTEM, INC.	2 of 3	AL	1,751	232	56.7
233	PINTLALA WATER SYSTEM, INC.	3 of 3	AL	1,751	355	47.7
234	PRATTVILLE (WATER WORKS BOARD OF)	1 of 17	AL	2,330	26	70
235	PRATTVILLE (WATER WORKS BOARD OF)	2 of 17	AL	2,330	26	70
236	PRATTVILLE (WATER WORKS BOARD OF)	3 of 17	AL	2,330	193	67.2
237	PRATTVILLE (WATER WORKS BOARD OF)	4 of 17	AL	2,330	167	63.8
238	PRATTVILLE (WATER WORKS BOARD OF)	5 of 17	AL	2,330	167	63.8
239	PRATTVILLE (WATER WORKS BOARD OF)	6 of 17	AL	2,330	167	63.8
240	PRATTVILLE (WATER WORKS BOARD OF)	7 of 17	AL	2,330	20 501	39.4
241	PRATTVILLE (WATER WORKS BOARD OF)	8 of 17	AL	2,330	20 501	39.4
242	PRATTVILLE (WATER WORKS BOARD OF)	9 of 17	AL	2,330	19 808	39.1
243	PRATTVILLE (WATER WORKS BOARD OF)	10 of 17	AL	2,330	19 808	39.1
244	PRATTVILLE (WATER WORKS BOARD OF)	11 of 17	AL	2,330	19 808	39.1
245	PRATTVILLE (WATER WORKS BOARD OF)	12 of 17	AL	2,330	19 808	39.1
246	PRATTVILLE (WATER WORKS BOARD OF)	13 of 17	AL	2,330	19 808	39.1
247	PRATTVILLE (WATER WORKS BOARD OF)	14 of 17	AL	2,330	19 808	39.1
248	PRATTVILLE (WATER WORKS BOARD OF)	15 of 17	AL	2,330	19 808	39.1
249	PRATTVILLE (WATER WORKS BOARD OF)	16 of 17	AL	2,330	19 808	39.1
250	PRATTVILLE (WATER WORKS BOARD OF)	17 of 17	AL	2,330	19 808	39.1
251	RED BAY WATER & GAS BOARD	1 of 5	AL	1,200	78	87.7
252	RED BAY WATER & GAS BOARD	2 of 5	AL	1,200	480	59.4
253	RED BAY WATER & GAS BOARD	3 of 5	AL	1,200	480	59.4
254	RED BAY WATER & GAS BOARD	4 of 5	AL	1,200	480	59.4
255	RED BAY WATER & GAS BOARD	5 of 5	AL	1,200	480	59.4
256	ROANOKE (THE UTIL. BD. OF THE CITY OF)	1 of 2	AL	3,690	46	79.6
257	ROANOKE (THE UTIL. BD. OF THE CITY OF)	2 of 2	AL	3,690	46	79.6
258	RUSSELL COUNTY WATER AUTHORITY	1 of 3	AL	5,600	324	84.5
259	RUSSELL COUNTY WATER AUTHORITY	2 of 3	AL	5,600	158	73.4
260	RUSSELL COUNTY WATER AUTHORITY	3 of 3	AL	5,600	158	73.4
261	RUSSELLVILLE WATER WORKS	1 of 2	AL	7,163	159	63.7
262	RUSSELLVILLE WATER WORKS	2 of 2	AL	7,163	159	63.7
263	SCOTTSBORO WATER WORKS	1 of 2	AL	10,940	32 714	2
264	SCOTTSBORO WATER WORKS	2 of 2	AL	10,940	32 714	2
265	SECTION-DUTTON WATER SYSTEM		AL	32,949	32 714	2
266	SHEFFIELD UTILITIES DEPARTMENT		AL	14,574	44 111	7
267	SHELBY COUNTY WATER SYSTEM		AL	35,892	11 481	22.2
268	SMITHS WATER AND SEWER AUTHORITY		AL	29,859	6783	8.5
269	SPANISH FORT WATER SYSTEM	1 of 2	AL	4,632	130	70.3
270	SPANISH FORT WATER SYSTEM	2 of 2	AL	4,632	61 754	50.1
271	SPRINGVILLE WATER WORKS		AL	5,973	124	74.8

(continued)

Table B.AL.1 (continued)—Public water system intakes receiving water from State and private forest land in Alabama

Intake ID	Public water system name	Intake number for system	State	Population served by intake	Total volume of surface water available to intake	Total surface water from State and private forest lands
					(million m ³ yr ⁻¹)	(percent)
272	SYLACAUGA UTILITIES BOARD	1 of 3	AL	7,451	34	42.8
273	SYLACAUGA UTILITIES BOARD	2 of 3	AL	7,451	278	42.1
274	SYLACAUGA UTILITIES BOARD	3 of 3	AL	7,451	113	35.6
275	TALLADEGA-SHELBY WATER TREATMENT PLANT		AL	32	10 739	20
276	TALLADEGA WATER AND SEWER BOARD, CITY OF	1 of 5	AL	3,857	248	42.3
277	TALLADEGA WATER AND SEWER BOARD, CITY OF	2 of 5	AL	3,857	248	42.3
278	TALLADEGA WATER AND SEWER BOARD, CITY OF	3 of 5	AL	3,857	248	42.3
279	TALLADEGA WATER AND SEWER BOARD, CITY OF	4 of 5	AL	3,857	248	42.3
280	TALLADEGA WATER AND SEWER BOARD, CITY OF	5 of 5	AL	3,857	155	37.4
281	TALLASSEE WATER WORKS		AL	7,500	5044	58.8
282	TRI COMMUNITY WATER SYSTEM	1 of 5	AL	2,187	19 752	39.1
283	TRI COMMUNITY WATER SYSTEM	2 of 5	AL	2,187	19 752	39.1
284	TRI COMMUNITY WATER SYSTEM	3 of 5	AL	2,187	19 752	39.1
285	TRI COMMUNITY WATER SYSTEM	4 of 5	AL	2,187	19 720	39.1
286	TRI COMMUNITY WATER SYSTEM	5 of 5	AL	2,187	19 720	39.1
287	TUSCALOOSA WATER & SEWER	1 of 3	AL	57,589	603	83.1
288	TUSCALOOSA WATER & SEWER	2 of 3	AL	57,589	603	83.1
289	TUSCALOOSA WATER & SEWER	3 of 3	AL	57,589	45	77.7
290	TUSCUMBIA WATER WORKS		AL	13,338	163	28.2
291	TUSKEGEE UTILITIES BOARD		AL	13,500	5044	58.8
292	TWIN WATER AUTHORITY		AL	804	92	71.6
293	UPPER BEAR CREEK WATER AUTHORITY		AL	30	294	61.5
294	US ARMY AVIATION & MISSILE COMMAND	1 of 2	AL	14,250	35 642	4.9
295	US ARMY AVIATION & MISSILE COMMAND	2 of 2	AL	14,250	35 642	4.9
296	VERNON WATER AND SEWER BOARD	1 of 2	AL	4,901	250	92.1
297	VERNON WATER AND SEWER BOARD	2 of 2	AL	4,901	436	87.4
298	WARRIOR RIVER WATER AUTHORITY	1 of 4	AL	8,931	41	65.6
299	WARRIOR RIVER WATER AUTHORITY	2 of 4	AL	8,931	219	56.1
300	WARRIOR RIVER WATER AUTHORITY	3 of 4	AL	8,931	219	56.1
301	WARRIOR RIVER WATER AUTHORITY	4 of 4	AL	8,931	6115	54.9
302	WEDOWEE WATER, SEWER, & GAS BOARD		AL	6,900	740	18.4
303	WEST ETOWAH WATER & FIRE PRO AUTHORITY	1 of 2	AL	3,383	39	76.9
304	WEST ETOWAH WATER & FIRE PRO AUTHORITY	2 of 2	AL	3,383	311	32
305	WEST MORGAN-EAST LAWRENCE WATER AUTHORITY		AL	26,130	38 009	5.9
306	WILCOX COUNTY WATER SYSTEM	1 of 5	AL	1,319	94	92.6
307	WILCOX COUNTY WATER SYSTEM	2 of 5	AL	1,319	461	85.6
308	WILCOX COUNTY WATER SYSTEM	3 of 5	AL	1,319	59	77.9
309	WILCOX COUNTY WATER SYSTEM	4 of 5	AL	1,319	59	77.9
310	WILCOX COUNTY WATER SYSTEM	5 of 5	AL	1,319	27 480	45.6
311	WINFIELD WATER WORKS & SEWER BOARD	1 of 3	AL	2,877	92	71.6
312	WINFIELD WATER WORKS & SEWER BOARD	2 of 3	AL	2,877	92	71.6
313	WINFIELD WATER WORKS & SEWER BOARD	3 of 3	AL	2,877	92	71.6
314	WISE METALS GROUP, LLC (CONSTELLIUM)		AL	2,400	43 221	6.4
315	WOODLAND WATER BOARD		AL	1,320	27	56.5
316	PORT ST. JOE, CITY OF		FL	2,306	1755	8.8

(continued)

Table B.AL.1 (continued)—Public water system intakes receiving water from State and private forest land in Alabama

Intake ID	Public water system name	Intake number for system	State	Population served by intake	Total volume of surface water available to intake	Total surface water from State and private forest lands
					(million m ³ yr ⁻¹)	(percent)
317	COLUMBUS	1 of 2	GA	114,500	6783	8.5
318	COLUMBUS	2 of 2	GA	114,500	6783	8.5
319	DADE COUNTY WATER AUTHORITY	1 of 2	GA	18,200	154	47.8
320	DADE COUNTY WATER AUTHORITY	2 of 2	GA	18,200	154	47.8
321	EPHESUS		GA	676	30	32.2
322	HARRIS COUNTY WATER SYSTEM		GA	20,062	6374	8
323	HEARD COUNTY WATER AUTHORITY		GA	4,086	99	16.8
324	LAGRANGE		GA	41,852	4939	0.3
325	WEST POINT		GA	3,929	5995	4.7
326	IL AMERICAN-CAIRO	1 of 3	IL	974	260,792	1.6
327	IL AMERICAN-CAIRO	2 of 3	IL	974	260,792	1.6
328	IL AMERICAN-CAIRO	3 of 3	IL	974	260,792	1.6
329	FLUOR FEDERAL SERVICES INC.		KY	2,000	259,996	1.6
330	LEDBETTER WATER DISTRICT		KY	3,742	259,689	1.6
331	PADUCAH WATER WORKS	1 of 4	KY	9,145	57 884	7.3
332	PADUCAH WATER WORKS	2 of 4	KY	9,145	57 884	7.3
333	PADUCAH WATER WORKS	3 of 4	KY	9,145	57 884	7.3
334	PADUCAH WATER WORKS	4 of 4	KY	9,145	259,689	1.6
335	ALMATIS		LA	400	709,254	0.6
336	BELLE CHASSE WATER DISTRICT		LA	17,391	709,344	0.6
337	DALCOUR WATERWORKS DISTRICT		LA	925	709,344	0.6
338	DOMINO SUGAR		LA	360	709,344	0.6
339	DOW USA, LA DIVISION		LA	3,960	709,151	0.6
340	E JEFFERSON WW DISTRICT 1		LA	243,782	709,344	0.6
341	GRAMERCY WATERWORKS		LA	3,613	709,254	0.6
342	GRETNA WATERWORKS		LA	17,802	709,344	0.6
343	LUTCHER WATERWORKS		LA	4,781	709,254	0.6
344	MARATHON PETROLEUM COMPANY LLC		LA	817	709,254	0.6
345	NEW ORLEANS CARROLLTON WW	1 of 2	LA	145,522	709,344	0.6
346	NEW ORLEANS CARROLLTON WW	2 of 2	LA	145,522	709,344	0.6
347	NEW ORLEANS ALGIERS WATER WORKS	1 of 2	LA	26,393	709,344	0.6
348	NEW ORLEANS ALGIERS WATER WORKS	2 of 2	LA	26,393	709,344	0.6
349	NORANDA ALUMINA, LLC		LA	500	709,254	0.6
350	POINTE A LA HACHE WATER SYSTEM		LA	653	709,344	0.6
351	PORT SULPHUR WATER DISTRICT	1 of 2	LA	4,611	709,344	0.6
352	PORT SULPHUR WATER DISTRICT	2 of 2	LA	4,611	709,398	0.6
353	SHELL CHEMICAL COMPANY		LA	1,002	709,254	0.6
354	ST BERNARD PARISH WATERWORKS		LA	44,000	709,344	0.6
355	ST CHARLES WATER DISTRICT 1 EAST BANK		LA	29,517	709,344	0.6
356	ST CHARLES WATER DISTRICT 2 WEST BANK		LA	31,485	709,344	0.6
357	ST JAMES WATER DISTRICT 1		LA	6,120	709,254	0.6
358	ST JAMES WATER DISTRICT 2		LA	9,392	709,254	0.6
359	ST JOHN WATER DISTRICT 1		LA	12,577	709,254	0.6
360	ST JOHN WATER DISTRICT 2		LA	3,702	709,254	0.6
361	W JEFFERSON WW DISTRICT 2	1 of 2	LA	94,385	709,344	0.6

(continued)

Table B.AL.1 (continued)—Public water system intakes receiving water from State and private forest land in Alabama

Intake ID	Public water system name	Intake number for system	State	Population served by intake	Total volume of surface water available to intake	Total surface water from State and private forest lands
					(million m ³ yr ⁻¹)	(percent)
362	W JEFFERSON WW DISTRICT 2	2 of 2	LA	94,385	709,344	0.6
363	JACKSON CO UTILITY AUTHORITY-EAST	1 of 2	MS	1,429	11 400	1
364	JACKSON CO UTILITY AUTHORITY-EAST	2 of 2	MS	1,429	11 731	0.9
365	SHORT COLEMAN PARK-NASA PLANT		MS	461	45 990	9.2
366	TOWN OF TISHOMINGO		MS	706	547	52.1
367	CAMDEN WATER DEPT		TN	9,629	54 712	7.8
368	CHEMOURS-NEW JOHNSONVILLE PLANT		TN	750	54 799	7.8
369	CLIFTON WATER DEPT		TN	3,843	48 212	8.8
370	FIRST U.D. OF HARDIN COUNTY		TN	6,698	46 372	9.2
371	LINCOLN CO BD OF P.U. #1	1 of 12	TN	1,128	115	37.8
372	LINCOLN CO BD OF P.U. #1	2 of 12	TN	1,128	98	19.6
373	LINCOLN CO BD OF P.U. #1	3 of 12	TN	1,128	98	19.6
374	LINCOLN CO BD OF P.U. #1	4 of 12	TN	1,128	98	19.6
375	LINCOLN CO BD OF P.U. #1	5 of 12	TN	1,128	98	19.6
376	LINCOLN CO BD OF P.U. #1	6 of 12	TN	1,128	98	19.6
377	LINCOLN CO BD OF P.U. #1	7 of 12	TN	1,128	98	19.6
378	LINCOLN CO BD OF P.U. #1	8 of 12	TN	1,128	98	19.6
379	LINCOLN CO BD OF P.U. #1	9 of 12	TN	1,128	98	19.6
380	LINCOLN CO BD OF P.U. #1	10 of 12	TN	1,128	98	19.6
381	LINCOLN CO BD OF P.U. #1	11 of 12	TN	1,128	98	19.6
382	LINCOLN CO BD OF P.U. #1	12 of 12	TN	1,128	98	19.6
383	PARSONS WATER DEPARTMENT		TN	1,989	49 041	8.7
384	RIVER LANDING CONDOMINIUM ASSOC		TN	52	30 014	0.2
385	RIVERSIDE CATFISH HOUSE		TN	30	30 014	0.2
386	SOUTH PITTSBURG WATER SYSTEM		TN	6,552	31 408	0.4
387	TENNESSEE AMERICAN WATER		TN	189,009	29 891	0.2
388	WEST STEWART UTILITY DISTRICT	1 of 5	TN	88	56 262	7.6
389	WEST STEWART UTILITY DISTRICT	2 of 5	TN	88	56 262	7.6
390	WEST STEWART UTILITY DISTRICT	3 of 5	TN	88	56 262	7.6
391	WEST STEWART UTILITY DISTRICT	4 of 5	TN	88	56 262	7.6
392	WEST STEWART UTILITY DISTRICT	5 of 5	TN	88	56 262	7.6