

1947 PULPWOOD PRODUCTION  
BY COUNTY  
IN THE SOUTHEAST

by

James F. McCormack, Forester  
Division of Forest Economics



SOUTHEASTERN FOREST EXPERIMENT STATION  
ASHEVILLE, NORTH CAROLINA

I. T. HAIG, Director

## PREFACE

Through the McSweeney-McNary Act of 1928, Congress authorized the Secretary of Agriculture to conduct a comprehensive survey of the forest resources of the United States. The Forest Survey was organized by the Forest Service to carry out the provisions of the Act, and each of the 11 Regional Forest Experiment Stations is responsible for the work in its territory. In the Southeastern States the Forest Survey is an activity in the Division of Forest Economics of the Southeastern Forest Experiment Station, Asheville, North Carolina.

The work of the Survey is divided into five major phases:

1. Inventory. Determination of the extent, location, and condition of forest lands, and the quantity, species, and quality of timber on these lands.
2. Growth. Determination of the current rate of timber growth.
3. Drain. Determination of the amount of industrial and domestic wood used, and the total loss resulting from fire, insects, disease, suppression, and other causes.
4. Requirements. Determination of the current and probably future requirements for forest products by all classes of consumers.
5. Policies and plans. Analysis of the relation of these findings to one another and to other economic factors as a basis for public and private policies and plans of forest land use and management.

This progress report summarizes information on the 1947 production of pulpwood obtained in the course of compiling annual forest drain statistics by states and survey units.

CONTENTS

---

	Page
INTRODUCTION - - - - -	1
TABLES	
1. Pulpwood production in the Southeast by state and survey unit, 1947 - - - - -	2
2. Pulpwood production by county in Virginia, 1947 - - - - -	5
3. Pulpwood production by county in North Carolina, 1947 - - - - -	8
4. Pulpwood production by county in South Carolina, 1947 - - - - -	11
5. Pulpwood production by county in Georgia, 1947 - - - - -	13
6. Pulpwood production by county in Florida, 1947 - - - - -	17

### Acknowledgments

The production statistics contained in this release could not have been published without help from many sources. The author gratefully acknowledges the cooperation and assistance provided in the collection of the basic field information by the management of all reporting pulpmills, and by James W. Cruikshank and John J. Zirkle, staff members of the Southeastern Station. Acknowledgment is also due to Mrs. Christine Johnston, Miss Camilla Young, and other members of the Southeastern Station for assistance in compiling the statistics.

## 1947 PULPWOOD PRODUCTION BY COUNTY IN THE SOUTHEAST

This statistical release presents data by county on volume and kind of pulpwood produced during 1947 in Virginia, North Carolina, South Carolina, Georgia, and Florida. It is third in a series of annual reports on pulpwood production published by the Southeastern Forest Experiment Station. The first report covered 1945 production in the Carolinas and Virginia, and the 1946 report covered all five states.

These data were compiled from information furnished by all the pulp companies located in, or drawing wood from, the five-state Station territory. Each company reported its total production by county, or by shipping points which were used to assign production to counties. Therefore, these data show the approximate production for some counties and should not be accepted as free of error. However, errors in assigning production to counties tend to be compensating, and production summaries for groups of counties, survey units, or states will be sufficiently accurate for general use. The maps showing production by counties are believed to be accurate since the class intervals are broad enough to compensate for errors in the individual county data.

A total of 11,041 cords of sawmill slabs and 20,462 cords of veneer cores used as pulpwood were listed in the company reports. During compilation of the data, these volumes were removed so that the tables would show, for softwood and hardwood species groups, only the production from sound live timber. The chestnut wood production is, of course, entirely from dead timber.

All volumes are reported in terms of the 128 cubic-foot standard cord. The softwood volume includes all of the southern yellow pines and also a small amount of hemlock in North Carolina Survey Unit 4. About ninety percent of the hardwood production is made up of blackgum and sweetgum with the blackgums predominating. The remainder is principally soft maple, yellow-poplar, and species of oak. The four survey units in South Carolina for which 1946 production data were published have been changed back to the three original units, since users of these data found difficulty in making comparisons with previously published information.

A new map (fig. 1) showing the intensity of pine pulpwood production by county in relation to pine growing stock is included in this release. Its purpose is to show areas of heavy drain on growing stock which may or may not be correlated with areas of heavy production. This map is based on pine pulpwood production only and does not include drain created by lumber, fuelwood, or other products.

Total pulpwood production in the five states for 1947 was 4.8 million cords, an increase of 2.6 percent over 1946 and 11.5 percent over 1945. The state of South Carolina shows a decrease of 7 percent in total production, but production in all other states increased. The use of hardwoods decreased slightly in 1947, but the reported use is still well above the 1945 level.

Table 1. - Pulpwood production in the Southeast by state  
and survey unit, 1947

State	Forest survey unit	Species group			Total
		Softwoods	Hardwoods	Chestnut <sup>1/</sup>	
	<u>Number</u>	<u>Std.cords</u>	<u>Std.cords</u>	<u>Std.cords</u>	<u>Std.cords</u>
Virginia	<sup>2/</sup> 1	415,024	41,010	-	456,034
	2	225,074	51,355	4,281	280,710
	3	100,564	51,867	14,432	166,863
	4	29,745	43,863	5,785	79,393
	5	5,903	8,781	27,721	42,405
	All units		776,310	196,876	52,219
North Carolina	1	216,551	9,791	-	226,342
	2	138,795	9,512	-	148,307
	3	85,135	8,252	64	93,451
	4	91,314	29,719	176,059	297,092
	All units		531,795	57,274	176,123
South Carolina <sup>3/</sup>	1	261,142	24,129	-	285,271
	2	317,419	42,346	-	359,765
	3	284,080	19,272	-	303,352
	All units		862,641	85,747	-
Georgia	1	528,364	46,238	-	574,602
	2	202,398	6,194	-	208,592
	3	266,061	8,205	-	274,266
	4	109,683	1,452	-	111,135
	5	13,540	3,483	29,586	46,609
	All units		1,120,046	65,572	29,586
Florida	1	521,972	610	-	522,582
	2	246,323	632	-	246,955
	3	111,879	-	-	111,879
	4	295	-	-	295
	All units		880,469	1,242	-
All states	Total	4,171,261	406,711	257,928	4,835,900

<sup>1/</sup> Includes only chestnut used for pulp; an additional volume was used by plants making only tanning extract.

<sup>2/</sup> For location of survey units, see Figure 1.

<sup>3/</sup> For comparison, the 1946 production in South Carolina by original survey units was as follows: Unit 1 - Softwoods 287,942 cords, hardwoods 36,957 cords; Unit 2 - Softwoods 323,188 cords, hardwoods 50,989 cords; Unit 3 - Softwoods 298,109 cords, hardwoods 24,606 cords.

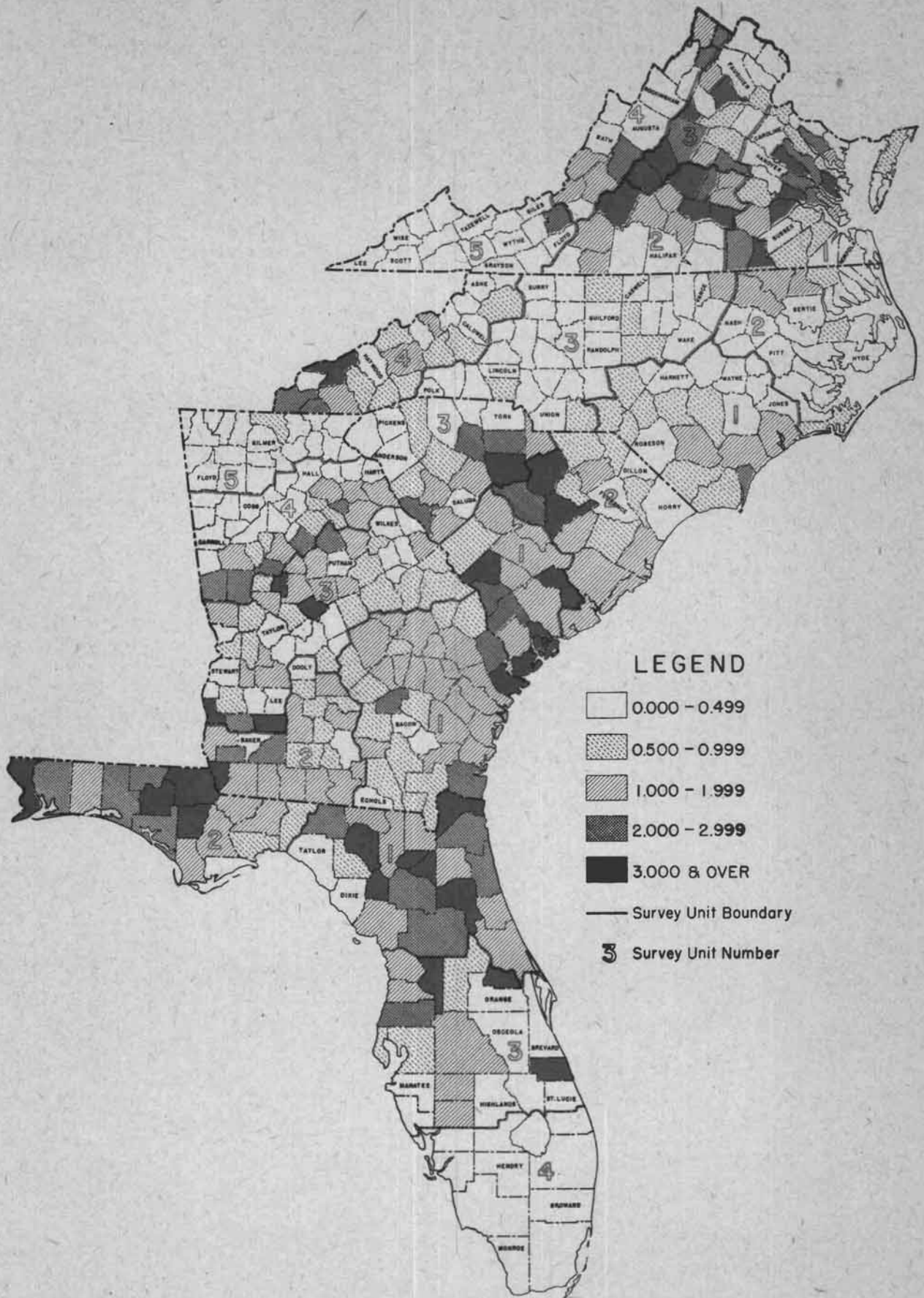


Figure 1. - Intensity of pine pulpwood production in percent of pine growing stock.

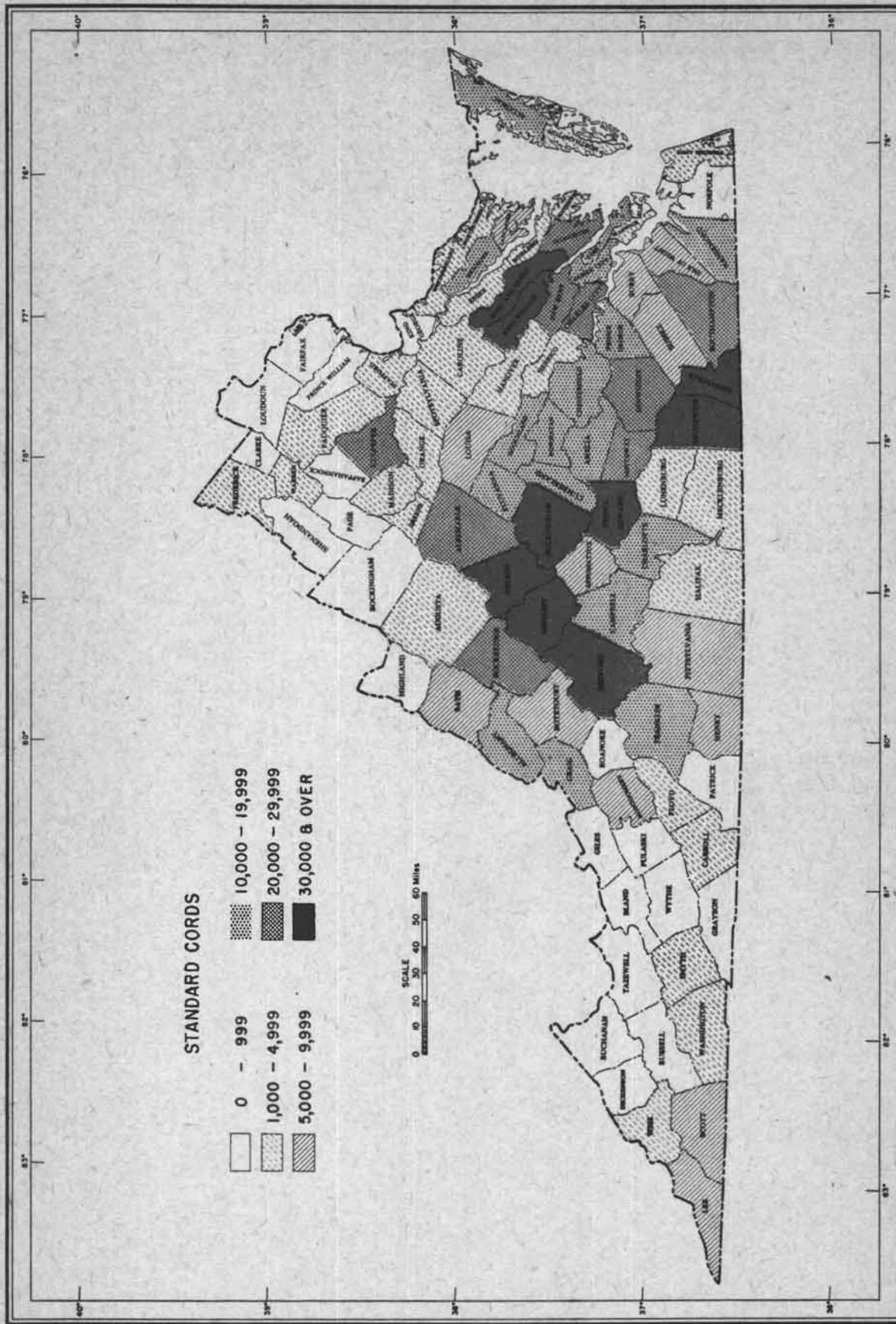


Figure 2. - Pulpwood production by county in Virginia, 1947.



Table 2. - Pulpwood production by county in Virginia, 1947

County	Species group			Total Std.cords
	Softwoods Std.cords	Hardwoods Std.cords	Chestnut Std.cords	
Accomac	12,540	1,393	-	13,933
Albemarle	16,140	5,710	2,256	24,106
Alleghany	4,106	11,568	512	16,186
Amelia	16,759	2,265	-	19,024
Amherst	16,739	13,016	4,287	34,042
Appomattox	8,113	855	-	8,968
Arlington	-	-	-	-
Augusta	1,509	1,857	-	3,366
Bath	1,244	5,756	1,131	8,131
Bedford	21,407	4,843	4,200	30,450
Bland	-	-	-	-
Botetourt	4,441	4,570	-	9,011
Brunswick	63,515	3,045	-	66,560
Buchanan	-	-	219	219
Buckingham	52,620	24,301	-	76,921
Campbell	9,271	1,198	-	10,469
Caroline	317	896	-	1,213
Carroll	324	27	1,888	2,239
Charles City	20,351	828	-	21,179
Charlotte	8,934	1,599	-	10,533
Chesterfield	18,384	383	-	18,767
Clarke	666	42	-	708
Craig	4,102	6,874	3,819	14,795
Culpeper	13,934	7,633	150	21,717
Cumberland	15,024	2,052	-	17,076
Dickenson	-	-	481	481
Dinwiddie	23,698	637	-	24,335
Elizabeth City	-	-	-	-
Essex	2,531	281	-	2,812
Fairfax	107	33	-	140
Fauquier	922	201	-	1,123
Floyd	-	-	3,981	3,981
Fluvanna	11,438	6,199	-	17,637
Franklin	12,492	1,451	81	14,024
Frederick	2,759	236	-	2,995
Giles	-	-	94	94
Gloucester	25,308	2,812	-	28,120
Goochland	14,171	2,911	-	17,082
Grayson	-	-	531	531
Greene	1,185	51	-	1,236
Greensville	41,887	2,288	-	44,175
Halifax	1,961	17	-	1,978
Hanover	2,219	1,066	-	3,285
Henrico	1,553	130	-	1,683
Henry	8,651	51	-	8,702
Highland	78	527	35	640
Isle of Wight	7,929	1,968	-	9,897
James City	13,919	1,547	-	15,466
King and Queen	29,104	3,234	-	32,338
King George	718	38	-	756
King William	28,934	3,345	-	32,279

Table 2. - Virginia (cont.)

County	Species group			Total
	Softwoods	Hardwoods	Chestnut	
	Std. cords	Std. cords	Std. cords	Std. cords
Lancaster	5,062	562	-	5,624
Lee	-	1,435	6,053	7,488
Loudoun	-	17	-	17
Louisa	7,367	2,269	-	9,636
Lunenburg	1,450	238	-	1,688
Madison	1,063	32	-	1,095
Mathews	1,265	141	-	1,406
Mecklenburg	1,324	-	-	1,324
Middlesex	2,531	281	-	2,812
Montgomery	4,965	1,928	2,644	9,537
Nansemond	3,523	6,556	-	10,079
Nelson	9,795	12,665	7,739	30,199
New Kent	20,509	4,055	-	24,564
Norfolk	678	-	-	678
Northampton	3,136	340	-	3,476
Northumberland	2,248	250	-	2,498
Nottoway	24,586	2,360	-	26,946
Orange	2,815	536	-	3,351
Page	192	14	-	206
Patrick	-	-	-	-
Pittsylvania	7,264	340	-	7,604
Powhatan	9,745	2,082	-	11,827
Prince Edward	25,473	7,703	-	33,176
Prince George	17,122	-	-	17,122
Prince William	467	-	-	467
Princess Anne	1,000	-	-	1,000
Pulaski	273	34	-	307
Rappahannock	595	48	-	643
Richmond	11,452	1,272	-	12,724
Roanoke	551	-	94	645
Rockbridge	8,208	12,145	194	20,547
Rockingham	110	49	-	159
Russell	-	-	-	-
Scott	-	1,112	6,899	8,011
Shenandoah	580	13	-	593
Smyth	102	1,220	1,538	2,860
Southampton	20,920	1,700	-	22,620
Spotsylvania	1,937	191	-	2,128
Stafford	1,889	355	-	2,244
Surry	9,335	113	-	9,448
Sussex	8,598	355	-	8,953
Tazewell	-	-	102	102
Warren	1,199	212	-	1,411
Warwick	2,750	228	-	2,978
Washington	-	3,025	1,300	4,325
Westmoreland	1,265	141	-	1,406
Wise	-	-	1,835	1,835
Wythe	239	-	156	395
York	10,723	1,125	-	11,848
All counties	776,310	196,876	52,219	1,025,405

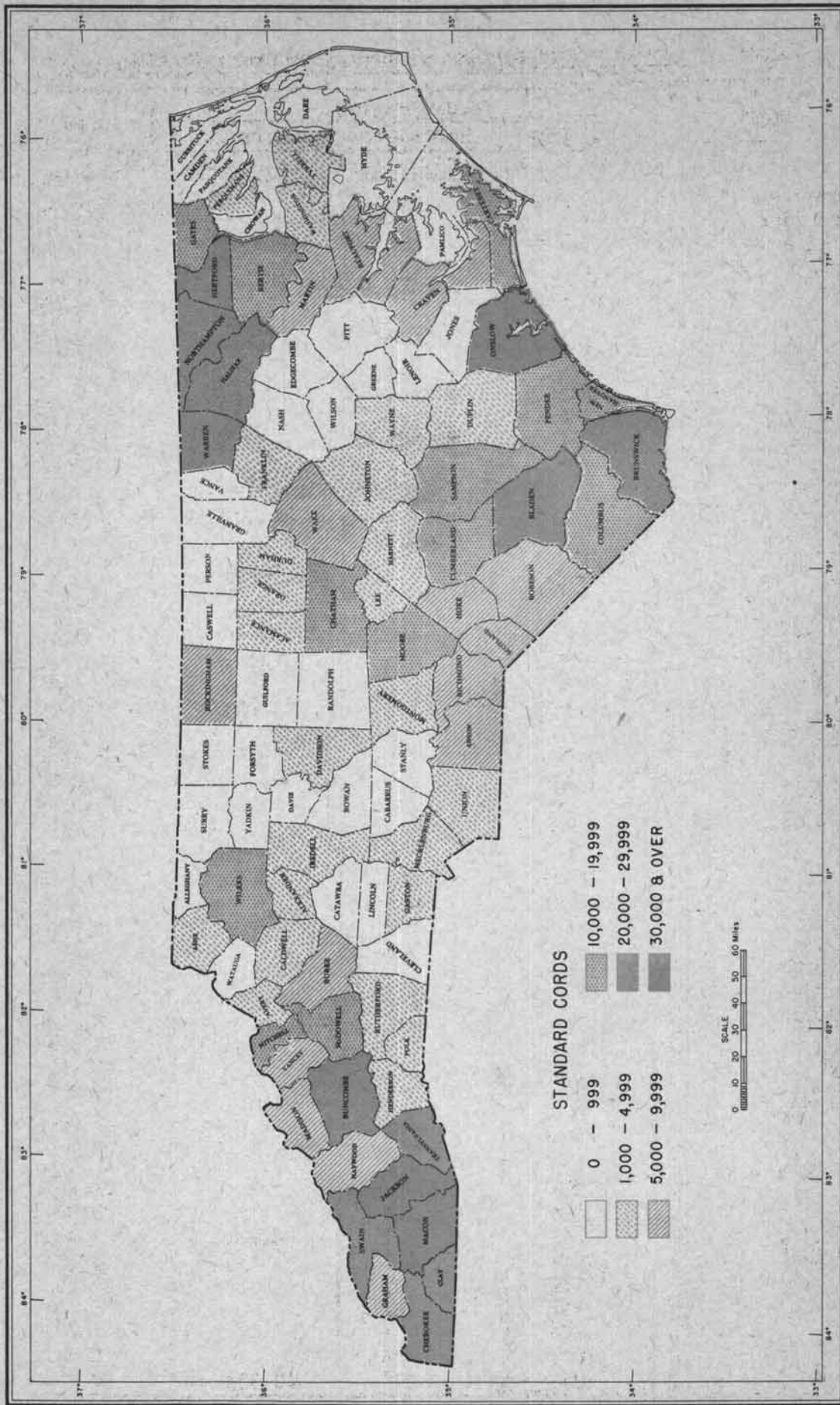


Figure 3. - Pulpwood production by county in North Carolina, 1947.

Table 3. - Pulpwood production by county in North Carolina, 1947

County	Species group			Total
	Softwoods	Hardwoods	Chestnut	
	<u>Std.cords</u>	<u>Std.cords</u>	<u>Std.cords</u>	<u>Std.cords</u>
Alamance	4,560	100	-	4,660
Alexander	1,344	27	-	1,371
Alleghany	-	-	194	194
Anson	7,305	1,139	-	8,444
Ashe	102	2,062	975	3,139
Avery	14	840	1,005	1,859
Beaufort	8,659	379	-	9,038
Bertie	11,075	1,490	-	12,565
Bladen	28,135	1,471	-	29,606
Brunswick	19,036	1,188	-	20,224
Buncombe	19,933	1,257	3,017	24,207
Burke	9,058	256	-	9,314
Cabarrus	-	-	-	-
Caldwell	588	329	84	1,001
Camden	-	-	-	-
Carteret	13,921	432	-	14,353
Caswell	-	-	-	-
Catawba	699	-	-	699
Chatham	14,277	829	-	15,106
Cherokee	16,215	2,273	3,876	22,364
Chowan	671	145	-	816
Clay	4,663	1,398	22,632	28,693
Cleveland	45	-	-	45
Columbus	14,834	334	-	15,168
Craven	5,888	-	-	5,888
Cumberland	9,843	413	-	10,256
Currituck	119	-	-	119
Dare	-	-	-	-
Davidson	850	669	-	1,519
Davie	122	14	-	136
Duplin	3,463	295	-	3,758
Durham	2,259	100	-	2,359
Edgecombe	188	-	-	188
Forsyth	-	146	-	146
Franklin	2,313	-	-	2,313
Gaston	3,891	-	-	3,891
Gates	12,962	1,507	-	14,469
Graham	1,826	726	4,664	7,216
Granville	483	-	-	483
Greene	-	-	-	-
Guilford	-	-	-	-
Halifax	21,116	2,000	-	23,116
Harnett	2,665	144	-	2,809
Haywood	252	961	4,621	5,834
Henderson	1,657	295	135	2,087
Hertford	25,312	95	-	25,407
Hoke	7,308	482	-	7,790
Hyde	780	-	-	780
Iredell	1,473	323	-	1,796
Jackson	1,646	2,675	40,305	44,626

Table 3. -- North Carolina (cont.)

County	Species group			Total
	Softwoods	Hardwoods	Chestnut	
	Std.cords	Std.cords	Std.cords	Std.cords
Johnston	1,973	-	-	1,973
Jones	92	-	-	92
Lee	3,056	118	-	3,174
Lenoir	644	-	-	644
Lincoln	21	-	-	21
McDowell	5,896	2,042	2,731	10,699
Macon	2,643	2,320	48,510	53,473
Madison	1,444	2,017	4,610	8,071
Martin	6,357	175	-	6,532
Mecklenberg	1,545	85	-	1,630
Mitchell	704	4,423	8,725	13,852
Montgomery	3,361	82	-	3,443
Moore	10,666	1,090	-	11,756
Nash	475	-	-	475
New Hanover	13,350	526	-	13,876
Northampton	23,005	2,612	-	25,617
Onslow	34,319	982	-	35,301
Orange	1,915	21	-	1,936
Pamlico	788	43	-	831
Pasquotank	71	-	-	71
Pender	17,903	1,273	-	19,176
Perquimans	2,021	46	-	2,067
Person	-	-	-	-
Pitt	14	-	-	14
Polk	1,202	414	28	1,644
Randolph	90	13	-	103
Richmond	8,951	537	-	9,488
Robeson	9,392	302	-	9,694
Rockingham	6,190	68	-	6,258
Rowan	73	-	-	73
Rutherford	2,201	492	36	2,729
Sampson	18,294	12	-	18,306
Scotland	8,390	624	-	9,014
Stanly	485	53	-	538
Stokes	119	11	-	130
Surry	455	-	-	455
Swain	6,990	2,643	11,096	20,729
Transylvania	5,361	543	14,683	20,587
Tyrrell	797	323	-	1,120
Union	1,284	782	-	2,066
Vance	124	-	-	124
Wake	8,255	798	-	9,053
Warren	18,194	2,086	-	20,280
Washington	4,306	255	-	4,561
Watauga	-	-	32	32
Wayne	4,237	-	-	4,237
Wilkes	12,297	1,233	240	13,770
Wilson	270	10	-	280
Yadkin	-	-	-	-
Yancey	25	1,426	3,924	5,375
All counties	531,795	57,274	176,123	765,192

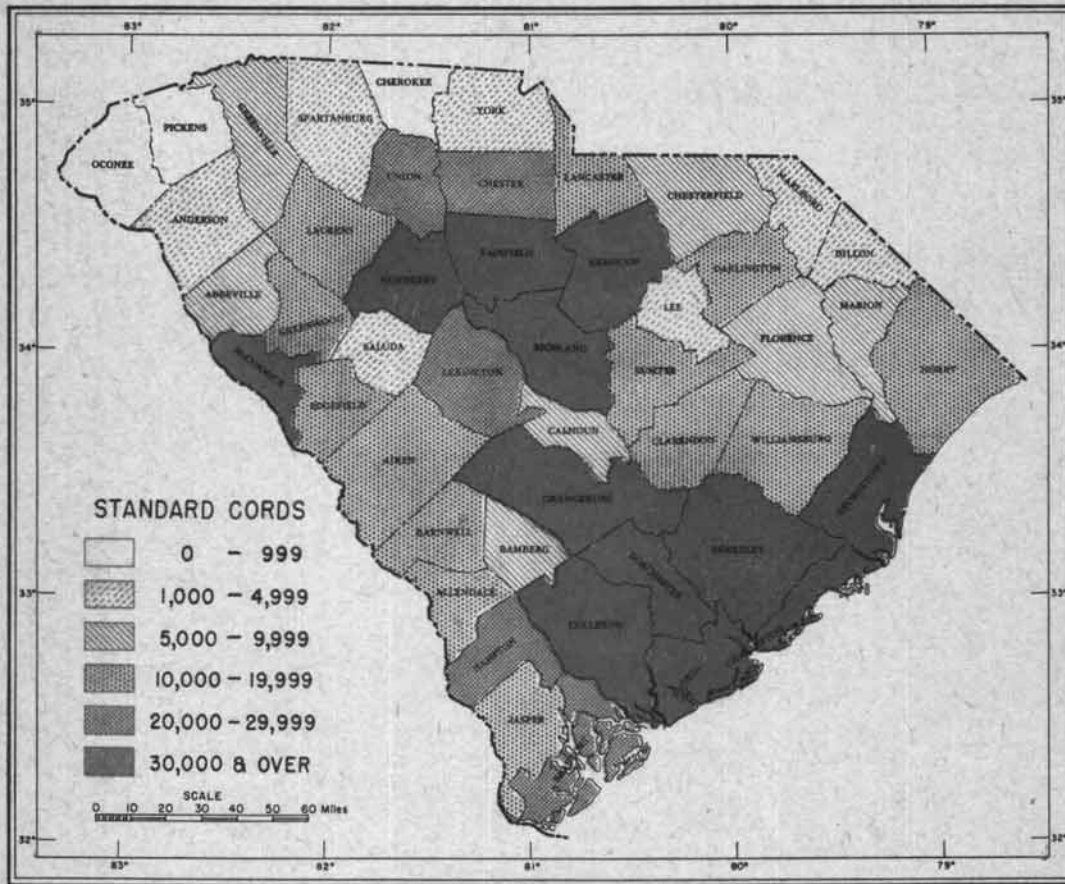


Figure 4. - Pulpwood production by county in South Carolina, 1947.

Table 4. - Pulpwood production by county in South Carolina, 1947

County	Species group			Total
	Softwoods	Hardwoods	Chestnut	
	Std.cords	Std.cords	Std.cords	Std.cords
Abbeville	5,228	39	-	5,267
Aiken	11,986	587	-	12,573
Allendale	10,840	1,100	-	11,940
Anderson	1,167	31	-	1,198
Bamberg	7,109	2,021	-	9,130
Barnwell	12,992	411	-	13,403
Beaufort	27,807	194	-	28,001
Berkeley	47,370	2,407	-	49,777
Calhoun	7,134	2,631	-	9,765
Charleston	34,491	1,833	-	36,324
Cherokee	621	-	-	621
Chester	22,252	1,606	-	23,858
Chesterfield	7,569	2,031	-	9,600
Clarendon	16,211	3,608	-	19,819
Colleton	38,394	1,671	-	40,065
Darlington	12,924	547	-	13,471
Dillon	1,836	673	-	2,509
Dorchester	64,273	1,469	-	65,742
Edgefield	17,748	953	-	18,701
Fairfield	83,248	10,722	-	93,970
Florence	3,386	2,090	-	5,476
Georgetown	45,461	4,220	-	49,681
Greenville	7,956	122	-	8,078
Greenwood	13,818	491	-	14,309
Hampton	23,513	1,800	-	25,313
Horry	13,992	1,597	-	15,589
Jasper	15,583	645	-	16,228
Kershaw	55,213	8,224	-	63,437
Lancaster	13,994	951	-	14,945
Laurens	15,026	370	-	15,396
Lee	3,585	1,272	-	4,857
Lexington	18,024	3,744	-	21,768
Marion	6,426	1,896	-	8,322
Marlboro	2,107	1,586	-	3,693
McCormick	36,750	180	-	36,930
Newberry	34,630	2,372	-	37,002
Oconee	358	31	-	389
Orangeburg	23,487	7,856	-	31,343
Pickens	276	98	-	374
Richland	37,654	6,987	-	44,641
Saluda	3,313	309	-	3,622
Spartanburg	2,473	47	-	2,520
Sumter	14,990	394	-	15,384
Union	23,032	640	-	23,672
Williamsburg	14,204	2,981	-	17,185
York	2,190	310	-	2,500
All counties	862,641	85,747	-	948,388

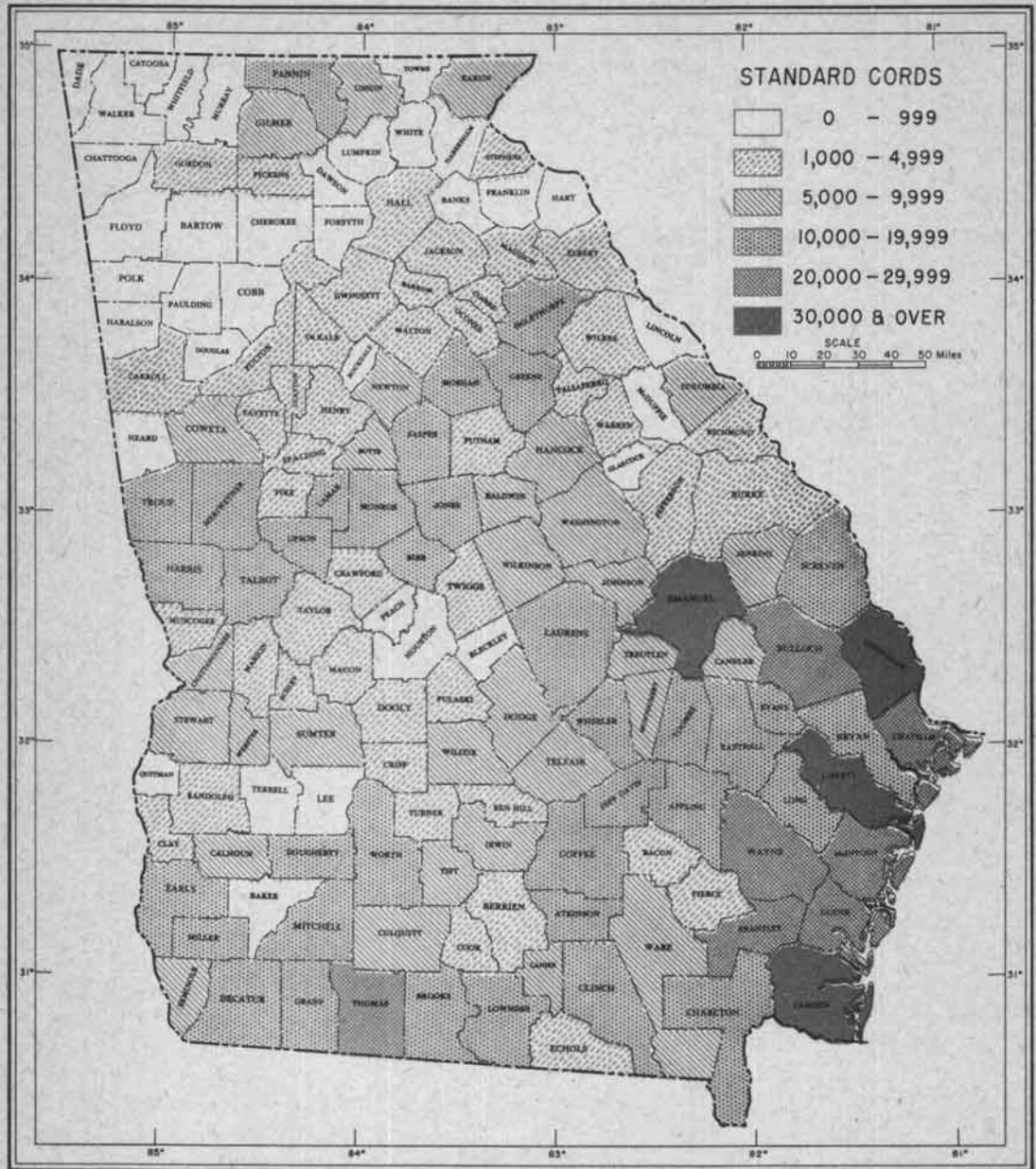


Figure 5. - Pulpwood production by county in Georgia, 1947.



Table 5. - Pulpwood production by county in Georgia, 1947

County	Species group			Total
	Softwoods	Hardwoods	Chestnut	
	Std.cords	Std.cords	Std.cords	Std.cords
Appling	9,464	1,427	-	10,891
Atkinson	12,304	385	-	12,689
Bacon	2,824	904	-	3,728
Baker	58	-	-	58
Baldwin	8,613	45	-	8,658
Banks	449	-	-	449
Barrow	1,815	49	-	1,864
Bartow	730	14	-	744
Ben Hill	2,830	316	-	3,146
Berrien	3,270	405	-	3,675
Bibb	11,310	892	-	12,202
Bleckley	836	20	-	856
Brantley	17,527	3,370	-	20,897
Brooks	14,486	45	-	14,531
Bryan	18,619	-	-	18,619
Bulloch	24,221	133	-	24,354
Burke	4,781	102	-	4,883
Butts	5,551	-	-	5,551
Calhoun	6,572	-	-	6,572
Camden	51,514	3,179	-	54,693
Candler	4,909	276	-	5,185
Carroll	1,623	18	-	1,641
Catoosa	-	29	-	29
Charlton	13,102	385	-	13,487
Chatham	19,645	6,448	-	26,093
Chattahoochee	5,482	158	-	5,640
Chattooga	292	-	-	292
Cherokee	243	-	-	243
Clarke	2,325	744	-	3,069
Clay	3,824	20	-	3,844
Clayton	1,212	-	-	1,212
Clinch	16,445	681	-	17,126
Cobb	294	-	-	294
Coffee	10,242	1,180	-	11,422
Colquitt	5,666	134	-	5,800
Columbia	7,406	32	-	7,438
Cook	4,378	385	-	4,763
Coweta	7,965	-	-	7,965
Crawford	2,363	65	-	2,428
Crisp	3,148	20	-	3,168
Dade	-	-	-	-
Dawson	-	-	-	-
Decatur	16,227	182	-	16,409
De Kalb	1,089	7	-	1,096
Dodge	7,067	884	-	7,951
Dooly	1,327	-	-	1,327
Dougherty	16,135	-	-	16,135
Douglas	573	26	-	599
Early	15,386	1,042	-	16,428
Echols	4,621	114	-	4,735
Effingham	37,811	1,468	-	39,279
Elbert	3,990	73	-	4,063
Emanuel	32,305	771	-	33,076

Table 5. - Georgia (cont.)

County	Species group			Total
	Softwoods	Hardwoods	Chestnut	
	<u>Std.cords</u>	<u>Std.cords</u>	<u>Std.cords</u>	<u>Std.cords</u>
Evans	10,096	962	-	11,058
Fannin	4,205	1,390	11,250	16,845
Fayette	2,194	-	-	2,194
Floyd	929	15	-	944
Forsyth	-	-	-	-
Franklin	705	-	-	705
Fulton	1,932	-	-	1,932
Gilmer	477	860	5,625	6,962
Glascocok	-	-	-	-
Glynn	17,191	3,247	-	20,438
Gordon	991	34	-	1,025
Grady	17,493	45	-	17,538
Greene	11,270	145	-	11,415
Gwinnett	2,782	60	-	2,842
Habersham	525	179	17	721
Hall	2,780	16	-	2,796
Hancock	5,298	226	-	5,524
Haralson	628	38	-	666
Harris	15,926	612	-	16,538
Hart	25	-	-	25
Heard	-	-	-	-
Henry	4,303	-	-	4,303
Houston	374	45	-	419
Irwin	7,242	726	-	7,968
Jackson	3,705	-	-	3,705
Jasper	11,943	-	-	11,943
Jeff Davis	16,565	89	-	16,654
Jefferson	3,586	548	-	4,134
Jenkins	4,677	956	-	5,633
Johnson	5,085	454	-	5,539
Jones	13,208	45	-	13,253
Lamar	10,414	20	-	10,434
Lanier	7,103	588	-	7,691
Laurens	16,242	244	-	16,486
Lee	796	-	-	796
Liberty	30,296	1,311	-	31,607
Lincoln	-	-	-	-
Long	15,117	648	-	15,765
Lowndes	15,205	182	-	15,387
Lumpkin	-	-	-	-
McDuffie	806	99	-	905
McIntosh	24,131	1,602	-	25,733
Macon	2,204	-	-	2,204
Madison	4,147	87	-	4,234
Marion	1,519	114	-	1,633
Meriwether	16,963	-	-	16,963
Miller	12,919	430	-	13,349
Mitchell	15,987	45	-	16,032
Monroe	16,092	65	-	16,157
Montgomery	4,718	2,681	-	7,399
Morgan	19,375	176	-	19,551
Murray	-	-	-	-
Muscogee	2,585	430	-	3,015
Newton	9,719	25	-	9,744

Table 5. - Georgia (cont.)

County	Species group			Total
	Softwoods	Hardwoods	Chestnut	
	Std. cords	Std. cords	Std. cords	
Oconee	1,846	12	-	1,858
Oglethorpe	12,512	254	-	12,766
Paulding	-	-	-	-
Peach	36	20	-	56
Pickens	1,569	32	-	1,601
Pierce	3,086	839	-	3,925
Pike	2,650	45	-	2,695
Polk	357	-	-	357
Pulaski	1,834	-	-	1,834
Putnam	3,775	65	-	3,840
Quitman	735	65	-	800
Rabun	1,339	268	7,069	8,676
Randolph	2,918	340	-	3,258
Richmond	2,046	116	-	2,162
Rockdale	584	-	-	584
Schley	2,357	-	-	2,357
Screven	13,308	705	-	14,013
Seminole	8,584	-	-	8,584
Spalding	3,792	-	-	3,792
Stephens	1,455	32	-	1,487
Stewart	5,283	89	-	5,372
Sumter	6,200	20	-	6,220
Talbot	8,495	3,065	-	11,560
Taliaferro	2,920	151	-	3,071
Tattnall	15,359	167	-	15,526
Taylor	1,142	45	-	1,187
Telfair	6,390	3,040	-	9,430
Terrell	441	-	-	441
Thomas	22,184	474	-	22,658
Tift	4,029	1,155	-	5,184
Toombs	14,070	760	-	14,830
Towns	-	-	-	-
Treutlen	7,431	1,787	-	9,218
Troup	14,951	-	-	14,951
Turner	3,646	-	-	3,646
Twiggs	1,474	37	-	1,511
Union	13	-	5,625	5,638
Upson	10,662	89	-	10,751
Walker	250	630	-	880
Walton	4,423	43	-	4,466
Ware	9,161	725	-	9,886
Warren	1,327	-	-	1,327
Washington	9,644	65	-	9,709
Wayne	21,022	3,154	-	24,176
Webster	5,297	-	-	5,297
Wheeler	11,799	1,262	-	13,061
White	-	-	-	-
Whitfield	522	-	-	522
Wilcox	7,648	20	-	7,668
Wilkes	2,600	-	-	2,600
Wilkinson	5,956	134	-	6,090
Worth	13,582	-	-	13,582
All counties	1,120,046	65,572	29,586	1,215,204

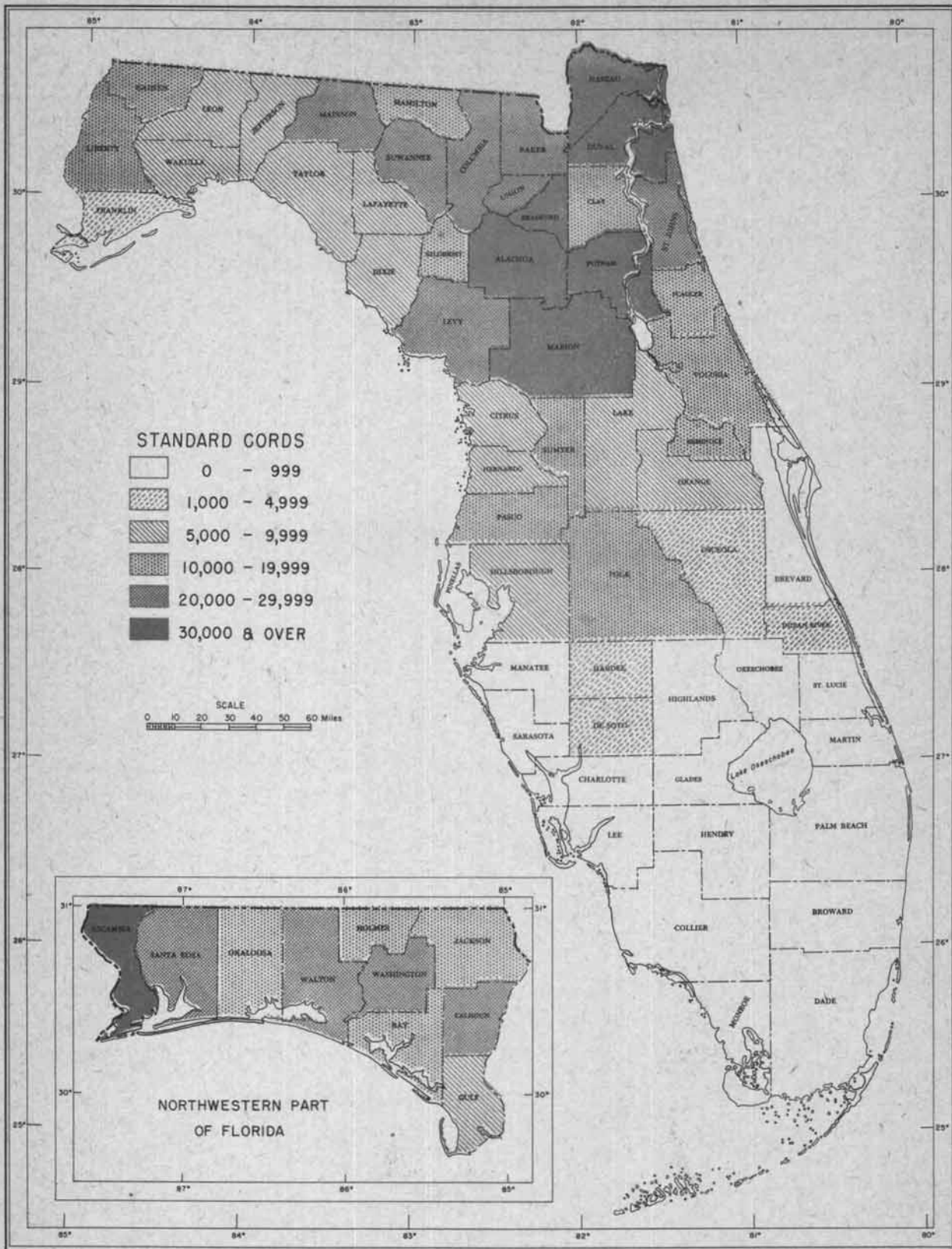


Figure 6. - Pulpwood production by county in Florida, 1947.

Table 6. - Pulpwood production by county in Florida, 1947

County	Species group			Total Std.cords
	Softwoods Std.cords	Hardwoods Std.cords	Chestnut Std.cords	
Alachua	40,595	15	-	40,610
Baker	21,486	-	-	21,486
Bay	13,088	-	-	13,088
Bradford	37,453	15	-	37,468
Brevard	89	-	-	89
Broward	-	-	-	-
Calhoun	21,482	-	-	21,482
Charlotte	30	-	-	30
Citrus	7,686	-	-	7,686
Clay	16,132	-	-	16,132
Collier	-	-	-	-
Columbia	21,675	136	-	21,811
Dade	-	-	-	-
De Soto	1,508	-	-	1,508
Dixie	7,105	-	-	7,105
Duval	35,833	-	-	35,833
Escambia	34,236	-	-	34,236
Flagler	12,097	-	-	12,097
Franklin	2,029	-	-	2,029
Gadsden	12,083	89	-	12,172
Gilchrist	13,643	-	-	13,643
Glades	-	-	-	-
Gulf	6,965	-	-	6,965
Hamilton	13,821	247	-	14,068
Hardee	4,142	-	-	4,142
Hendry	-	-	-	-
Hernando	8,523	-	-	8,523
Highlands	60	-	-	60
Hillsborough	5,625	-	-	5,625
Holmes	13,823	-	-	13,823
Indian River	3,966	-	-	3,966
Jackson	19,283	-	-	19,283
Jefferson	5,712	227	-	5,939
Lafayette	5,839	-	-	5,839
Lake	8,815	-	-	8,815
Lee	190	-	-	190
Leon	9,259	134	-	9,393
Levy	27,265	-	-	27,265
Liberty	16,059	-	-	16,059
Madison	27,799	-	-	27,799
Manatee	256	-	-	256
Marion	50,119	-	-	50,119
Martin	-	-	-	-
Monroe	75	-	-	75
Nassau	57,455	63	-	57,518
Okaloosa	15,824	-	-	15,824
Okeechobee	-	-	-	-
Orange	5,150	-	-	5,150
Osceola	4,191	-	-	4,191

Table 6. - Florida (cont.)

County	Species group			Total
	Softwoods	Hardwoods	Chestnut	
	<u>Std. cords</u>	<u>Std. cords</u>	<u>Std. cords</u>	<u>Std. cords</u>
Palm Beach	-	-	-	-
Pasco	17,126	-	-	17,126
Pinellas	768	-	-	768
Polk	18,902	-	-	18,902
Putnam	30,931	-	-	30,931
Saint Johns	25,438	-	-	25,438
Saint Lucie	-	-	-	-
Santa Rosa	24,164	-	-	24,164
Sarasota	119	-	-	119
Seminole	12,060	-	-	12,060
Sumter	12,893	-	-	12,893
Suwannee	26,863	134	-	26,997
Taylor	8,685	-	-	8,685
Union	23,347	-	-	23,347
Volusia	18,391	-	-	18,391
Wakulla	5,868	182	-	6,050
Walton	20,355	-	-	20,355
Washington	26,093	-	-	26,093
All counties	880,469	1,242	-	881,711

FOREST SURVEY REPORTS PUBLISHED BY SOUTHEASTERN FOREST EXPERIMENT STATION

Forest Survey Releases

- No. 1 - Forest Resources of the Northern Coastal Plain of South Carolina. 1939  
No. 2 - Forest Resources of the Piedmont Region of South Carolina. 1939  
No. 3 - Forest Resources of the Southern Coastal Plain of South Carolina. 1939  
No. 4 - Forest Resources of the Southern Coastal Plain of North Carolina. 1940  
No. 5 - Forest Resources of the Northern Coastal Plain of North Carolina. 1940  
No. 6 - Forest Resources of the Piedmont Region of North Carolina. 1940  
No. 7 - Forest Resources of the Mountain Region of North Carolina. 1941  
No. 8 - The Distribution of Commercial Forest Trees in North Carolina. 1941  
No. 9 - The Distribution of Commercial Forest Trees in South Carolina. 1941  
No. 10 - The Distribution of Commercial Forest Trees in Virginia. 1942  
No. 11 - Virginia's Forests. 1942  
No. 12 - The Forest Situation in the Coastal Plain of Virginia. 1943  
No. 13 - The Forest Situation in Piedmont Virginia. 1943  
No. 14 - Preliminary Estimate of 1942 Lumber Production in the Carolinas, Virginia, West Virginia, Kentucky, and Tennessee. 1943  
No. 15 - The Forest Situation in the Mountain Region of Virginia. 1943  
No. 16 - Wartime Lumber Production in the Appalachian Hardwood Region, January 1942-June 1944. 1944  
No. 17 - Wood Waste Available for Conversion to Ethyl Alcohol in the Columbia Area of South Carolina. 1944  
No. 18 - North Carolina Forest Growth and Drain, 1937-1943. 1945  
No. 19 - Approximate Forest Area and Timber Volume by County in the Carolinas and Virginia. 1945  
No. 20 - South Carolina Forest Growth and Drain, 1936-1943. 1945  
No. 21 - 1945 Pulpwood Production by County in the Carolinas and Virginia. 1946  
No. 22 - Southern Forests as a Source of Pulpwood. 1947  
No. 23 - 1946 Pulpwood Production by County in the Southeast. 1947  
No. 24 - Southern Pulpwood Production and the Timber Supply. 1948  
No. 25 - Forest Resources of the Lower Coastal Plain of South Carolina. 1948  
No. 26 - 1946 Commodity Drain by County from South Carolina Forests. 1948

USDA Miscellaneous Publications

- No. 533 - North Carolina Forest Resources and Industries. 1944  
No. 552 - South Carolina Forest Resources and Industries. 1944

